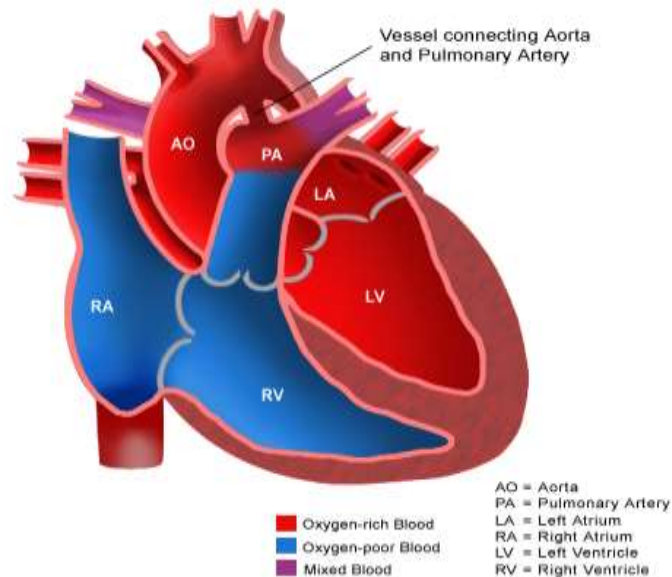


### Patent Ductus Arteriosus (PDA)



## Patent Ductus Arteriosus

### What is it?

The ductus arteriosus (PDA) is an artery connecting the main body artery (aorta) and the main lung artery (pulmonary artery).

### What causes it?

The ductus allows blood to move away from the lungs to the body before birth. When babies are born, the opening is no longer needed and it usually closes within the first few days.

Sometimes, the ductus doesn't close after birth. This is common in premature infants but rare in full-term babies. In most children, the cause of PDA isn't known. Some children can have other heart defects along with the PDA.

### How does it affect the heart?

Normally the heart's left side pumps blood to the body, and the right side pumps blood to the lungs. In a child with PDA, blood gets pumped from the body artery (aorta) into the lung (pulmonary) arteries.

If the PDA is large, the extra blood being pumped into the lung arteries makes the heart and lungs work harder and the lungs can become congested. By time the high pressure in the lung arteries can result in their permanent damage

### How does PDA affect my child?

If the PDA is small, it usually does not cause any symptoms because the heart and lungs don't have to work harder. The only abnormal finding may be an abnormal noise heard with a stethoscope.

If the PDA is large, the child may breathe faster and harder than normal. Infants may have difficulties in feeding and delayed growth.

## **Management options:**

If the PDA is small, no treatment may be needed. Small PDAs often close spontaneously within the first few months of life.

Most children can have the PDA closed by via cardiac catheterization using a coil or other device can be inserted through the catheters into the PDA like a plug.

If surgery is needed, an incision is made in the left side of the chest, between the ribs. The ductus is closed by tying it with a thread or by permanently placing a small metal clip around the ductus to squeeze it closed.

In premature newborn babies, medicine can often help the ductus close in the first few weeks of life.

## **What activities can my child do?**

If the PDA is small, or if it has been closed your child may not need any restriction of activities.