



KING ABDULAZIZ UNIVERSITY

Faculty of Engineering

Alumni Relations Unit

**Alumni Survey Cumulative Report,
2007 - 2014**

August 2014

About the Report

Since March 2012 the ARU started surveying graduates in the previous years in parallel with those who just graduated. In the same time we build and maintain a database containing updated information about engineering students, alumni, employees, and the employers.

Monthly, ARU manages information on the employment status of FoE alumni, enabling accurate tracking such as career path, salary statistics, and comments for improvement.

As you examine the Alumni Survey Cumulative Report, please note :

- Data was collected for students graduating between 2007-2008 and Spring of 2013-2014 academic years .
- Percentages indicated are the percent of those responding to the survey.

Table of Contents

| | |
|--|-----|
| EXECUTIVE SUMMARY | iii |
| Response Rate – Telephone and E-mail Survey | 1 |
| Comparison Table | 2 |
| Respondents Distribution by Place of Residence | 3 |
| Employment Status | 4 |
| Comparison Table | 5 |
| Employment Rate by Program of Study for each Graduation Year | 6 |
| Employed but Seeking new Employment | 7 |
| Sector Specific Employment Distribution | 8 |
| Employers | 9 |
| Top 10 Employers of Engineering Alumni | 10 |
| Top Employers by Program of Study | 11 |
| Time of Getting a Job | 13 |
| Highlights: | 14 |
| First Job - Major Comparison | 16 |
| First Job - Major Comparison for each Graduation Year | 17 |
| Graduates Starting Salaries | 18 |
| Graduates Starting Salaries by Program of Study for each Graduation Year | 19 |
| Effect of GPA on Time of Getting a Job and on the Starting Salary | 20 |
| Current Job - Major Comparison (if applicable) | 21 |
| Current Job-Major Comparison for each Graduation Year | 22 |
| Graduates Current Salaries (if applicable) | 23 |
| Current Salary Rate by Program of Study for each Graduation Year | 24 |
| Appendix A – Data Tabulations | 25 |
| Appendix B -Employers | 49 |
| Appendix C – Alumni Survey Form | 54 |

EXECUTIVE SUMMARY

This cumulative report provides a comprehensive picture of employment of our graduates and illustrates the success FoE graduates have as it relates to their career. This success is illustrated by an overall reported employment rate of 84%. Furthermore, 79.5% of those who reported that they were employed indicated that they found their first job within the first six months of graduating or before graduation. And finally, 82% of those who indicated that they were employed reported that they felt their first job was directly related to their academic major.

The report details the responses from alumni who graduated from divisions within the Faculty of Engineering (FoE) in the last seven years, those of 2007-2008 academic year through Spring 2013-2014, totaling of 2217 respondents. The survey was conducted between March 10, 2012 and August 20, 2014 by the office of Alumni Relations Unit (ARU) through a telephone and e-mail survey.

The presentation of the results of the survey is divided into eleven broad categories: response rate, alumni distribution by current place of residence, employment status, sector specific employment distribution, Top employers of our graduates, time of getting a job, first job-major comparison, starting salaries, effect of GPA on time of getting a job and on the starting salaries, current job-major comparison, current salaries. A list of the employers of our alumni and alumni comments for improvement are included in the Appendix B and Appendix C, respectively. The data tabulations are included in Appendix A.

Participants

Accurate contact information (mobile and email) was obtained for 2600 of the alumni graduating between Fall 2007 and Spring 2014. A total of 2217 surveys were completed, resulting in a response rate of 85 percent.

Geographical Distribution of Respondents

A total of 2158 provided us with their current place of residence. The top 7 places of residence of graduates are Makkah province (69%), Eastern province (8%), AlMadinah province (7%), Riyadh province (7%), USA (4%), and Asir and Jazan province (2%).

Employment Status

About three-fourths, 84% (1860/2217), of the respondents state that they were employed, 8% pursuing higher education, 5% were seeking employment, and about 3% working as self employed. About 80 percent of the employed respondents found their first job within the first six months of graduating or before graduation.

Top 10 Employers

The top 10 employers are hiring around 50 percent of engineering graduates each year. This is with the exception of this year (2013-2014) and the last year (2012-2013), where hiring of FoE graduates were represented by employers other than the top 10 at approximately 60 percent.

First Full-Time Position

Eighty-two percent of the graduates were working within their field of study, and the remaining 18 percent say their first work was "not related".

Forty-four percent reported earning a starting salary between SR7,500 and SR10,000 a month. While 36 percent earned over SR10,000. Nineteen percent earned less than SR7,500. Only about one percent reported earning starting salary more than SR15,000.

Current Position

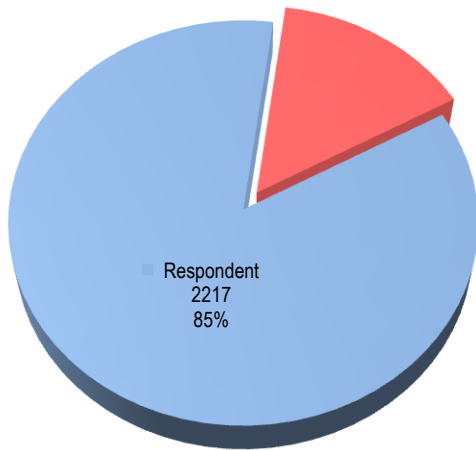
Approximately Forty- one of currently employed alumni are working in the government sector, and 40.2 percent indicate employment in the private sector, 7.8 percent in the academic and research, and about 4 percent for military. Relatively few alumni, (0.2%) for nonprofit sector and (3.8%) say they are self-employed. There were 3.7 percent of the alumni did not specify where they are working.

The average monthly current salaries is as follows: 34 percent reported earning between SR7,500 and SR10,000 a month, 52 percent earning between SR10,000 and SR15,000, 10 percent earning over SR15,000, and 4 percent reported earning salary less than SR7,500. 78 percent of currently employed alumni are working in jobs either "related" or "not related" (22%) to their academic major at the Faculty of Engineering.

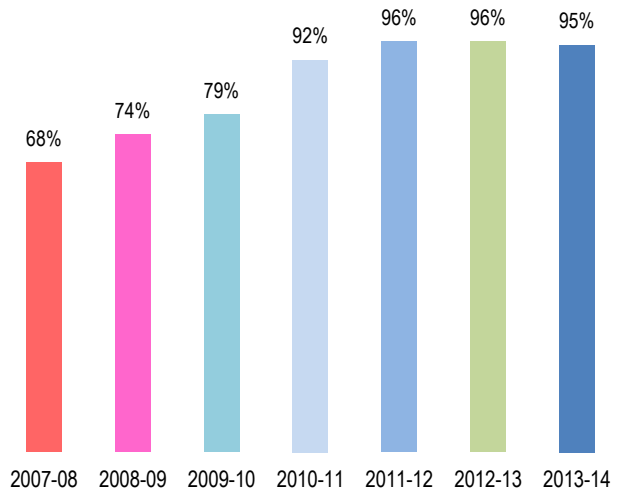
Response Rate – Telephone and E-mail Survey

Students Who Graduated Between Fall 2007 –Spring 2014
From a Telephone and E-mail Survey.

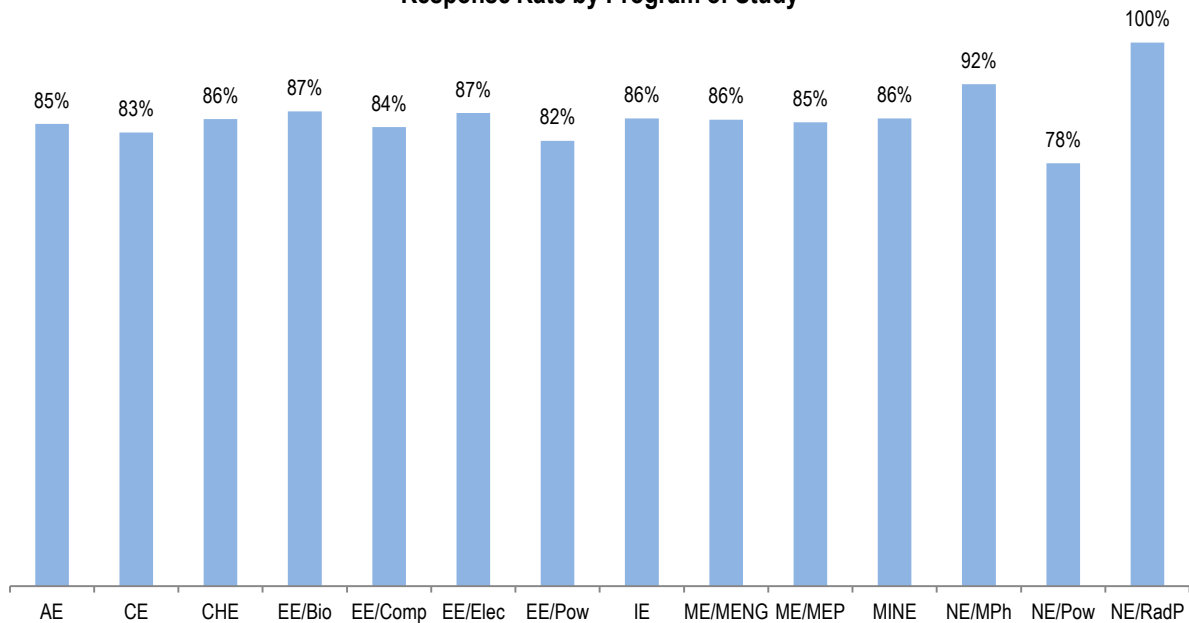
Overall Response Reate



Response Rate by Gradation Year



Response Rate by Program of Study



Highlights:

Regarding the response rate, Accurate contact information (mobile and email) was obtained for 2600 of the 2631 graduates, a total of 2217 out of 2600, responded. The response rate was 85%.

Response Rate

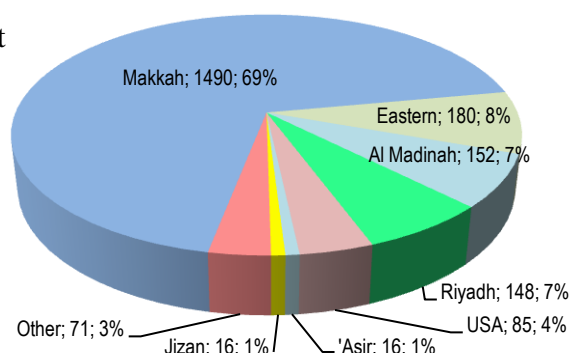
Comparison Table

Response Rate by Department and Program of Study

| Department / Program | Population | Respondent | % |
|---|-------------|-------------|--------------|
| Aeronautical Engineering (AE) | 100 | 85 | 85.0% |
| Civil Engineering (CE) | 385 | 321 | 83.4% |
| Chemical and Materials Engineering (CHE) | 276 | 237 | 85.9% |
| Electrical and Computer Engineering (EE) | 646 | 546 | 84.5% |
| Bio-Medical Engineering (EE/Bio) | 71 | 62 | 87.3% |
| Computer Engineering (EE/Comp) | 154 | 130 | 84.4% |
| Electronics & Communication Eng. (EE/Elec) | 184 | 160 | 87.0% |
| Power & Machines Engineering (EE/Pow) | 237 | 194 | 81.9% |
| Industrial Engineering (IE) | 473 | 407 | 86.0% |
| Mechanical Engineering (ME) | 614 | 526 | 80.3% |
| Production Eng. & Mechanical Systems Design (ME/Meng) | 451 | 387 | 85.8% |
| Thermal Eng. & Desalination Technology (ME/MEP) | 163 | 139 | 85.3% |
| Mining Engineering (MINE) | 43 | 37 | 86.0% |
| Nuclear Engineering (NE) | 63 | 58 | 92.1% |
| Medical Physics Engineering (NE/MPh) | 39 | 36 | 92.3% |
| Power Engineering (NE/Pow) | 9 | 7 | 77.8% |
| Radiation Protection Engineering (NE/RadP) | 15 | 15 | 100.0% |
| Overall | 2600 | 2217 | 85.3% |

Respondents Distribution by Place of Residence

A total of 2158 provided us with their current place of residence. The chart below shows the top 7 places of residence of graduates in the last seven years.



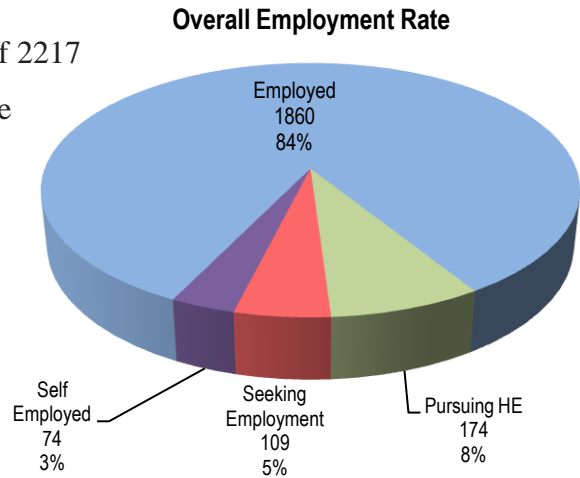
Geographical Distribution of Respondents

| Inside the Kingdom | | Outside the Kingdom | |
|--------------------|------|---------------------|----|
| Makkah | # | USA | # |
| Jeddah | 1369 | USA | 68 |
| Makkah | 65 | Canada | # |
| Rabigh | 24 | Canada | 4 |
| Ta'if | 8 | Denver, CO | 2 |
| Al Qunfudhah | 6 | Los Angeles | 2 |
| Al Lith | 5 | Boston | 1 |
| Asfan | 4 | Chicago | 1 |
| Yanbu | 4 | Houston, Tx | 2 |
| Thuwal | 3 | Miami | 1 |
| Khilais | 2 | New Jersy | 1 |
| Eastern | | New York | 1 |
| Jubail | 69 | Orlando, FL | 1 |
| Alkhubar | 30 | Philadelphia | 1 |
| Al Dhahran | 23 | Pittsburgh | 1 |
| Dammam | 21 | san antonio, TX | 1 |
| Eastern | 16 | San Diego | 1 |
| Ras Tanura | 5 | San Jose | 1 |
| Abqaiq | 4 | Bahrain | |
| Udhailyah | 4 | Bahrain | 4 |
| Al-Ahsa | 3 | Hamad City | 1 |
| Hafar Al-Batin | 2 | Manamah | 1 |
| Hofuf | 1 | Muharraq | 1 |
| Shaibah | 1 | | |
| Tanajib | 1 | | |
| Al Madinah | | | |
| Yanbu | 101 | | |
| Al Madinah | 46 | | |
| Badr | 2 | | |

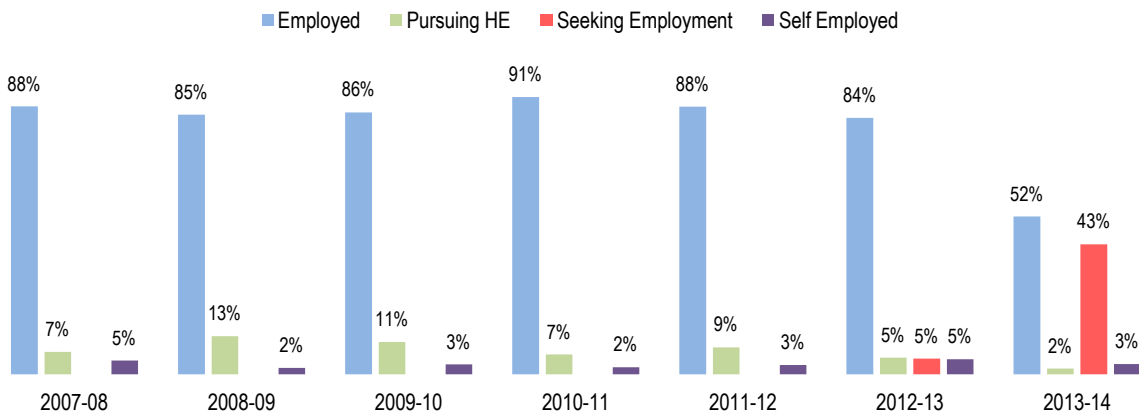
| Makkah Province | Outside Makkah | Outside the kingdom |
|-----------------|----------------|---------------------|
| 1490 | 542 | 126 |

Employment Status

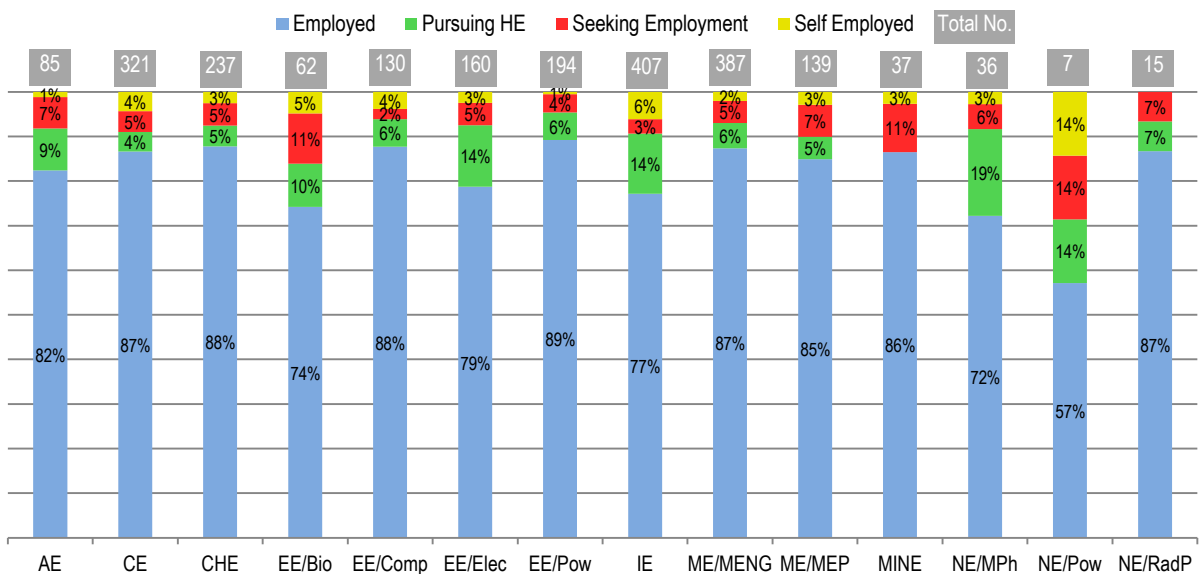
Regarding the employment status, a total of 2217 out of 2260, responded. Almost, 87% of the respondents state that they were employed or self employed, 8% pursuing higher education, and about 5% of them were seeking employment.



Employment Rate by Graduation Year



Employment Rate by Program of Study



Comparison Table

Employment Status by Graduation Year

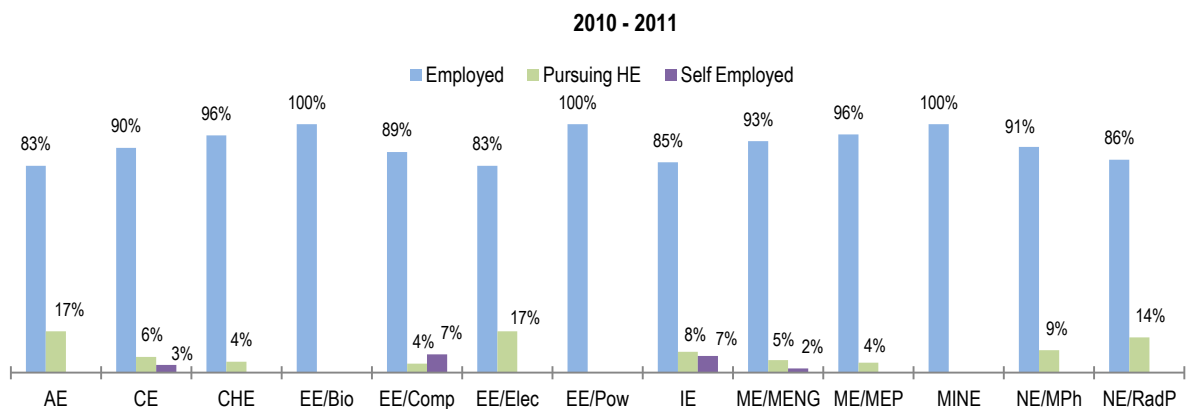
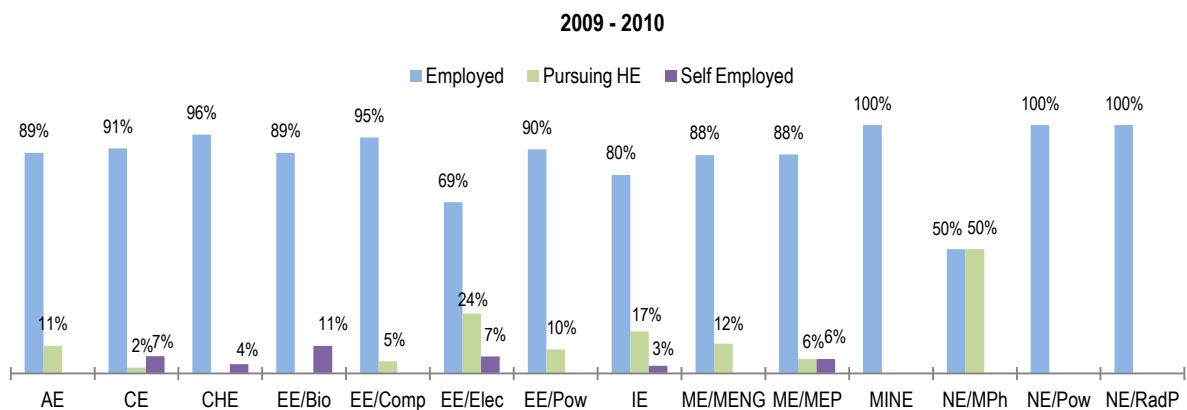
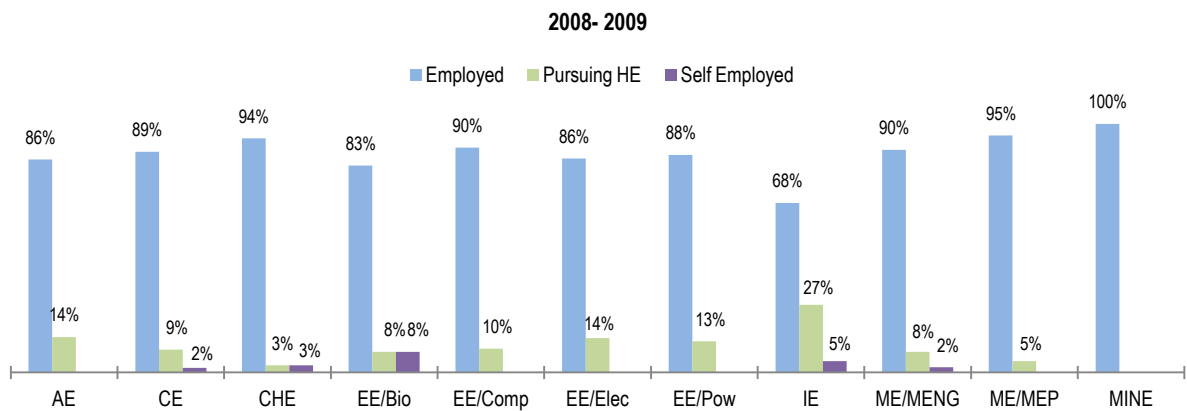
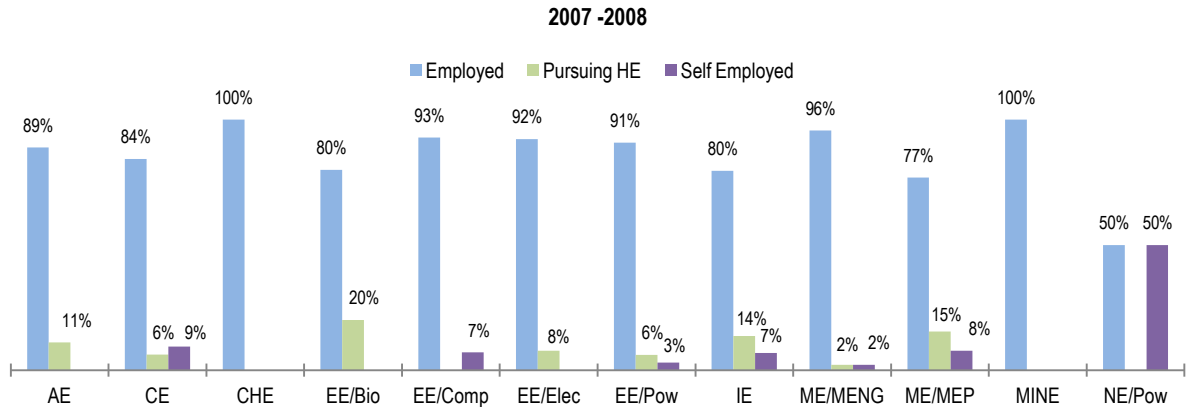
| Grad. Year | Employment Status | | | | Total |
|--------------|-------------------|-------------|--------------------|---------------|-------------|
| | Employed | Pursuing HE | Seeking Employment | Self Employed | |
| 2007-08 | 214 | 18 | | 11 | 243 |
| 2008-09 | 280 | 41 | | 7 | 328 |
| 2009-10 | 267 | 33 | | 10 | 310 |
| 2010-11 | 350 | 25 | | 9 | 384 |
| 2011-12 | 317 | 32 | | 11 | 360 |
| 2012-13 | 324 | 21 | 20 | 19 | 384 |
| 2013-14 | 108 | 4 | 89 | 7 | 208 |
| Total | 1860 | 174 | 109 | 74 | 2217 |

Regarding the employment status, the table below shows number of respondents by academic year and program of study.

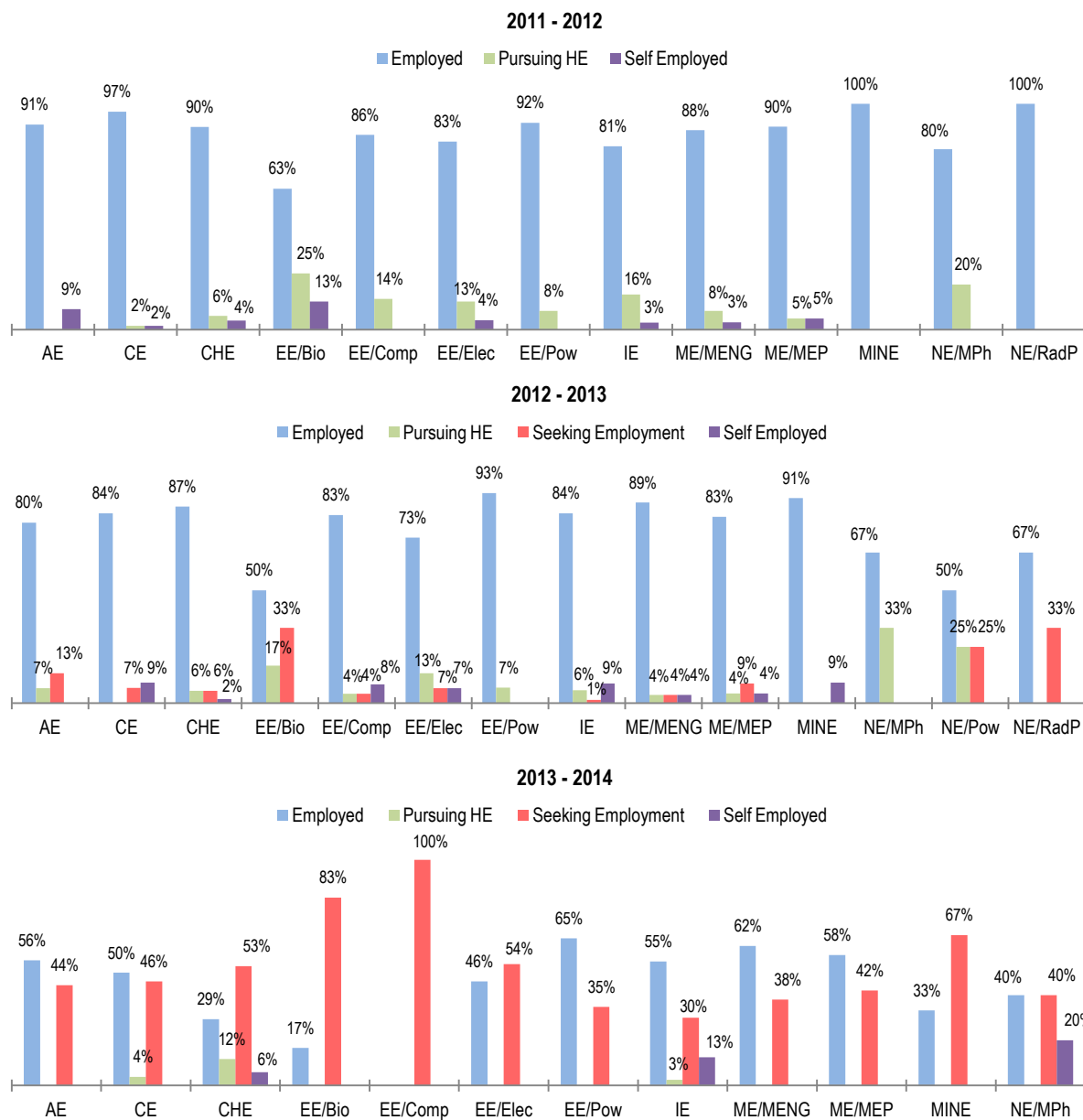
| Program | 2007-08 | 2008-09 | 2009-10 | 2010-11 | 2011-12 | 2012-13 | 2013-14 | Total |
|--------------|------------|------------|------------|------------|------------|------------|------------|-------------|
| AE | 9 | 14 | 9 | 18 | 11 | 15 | 9 | 85 |
| CE | 32 | 54 | 43 | 63 | 59 | 44 | 26 | 321 |
| CHE | 11 | 35 | 26 | 45 | 49 | 54 | 17 | 237 |
| EE/Bio | 10 | 12 | 9 | 11 | 8 | 6 | 6 | 62 |
| EE/Comp | 14 | 21 | 20 | 27 | 22 | 24 | 2 | 130 |
| EE/Elec | 26 | 29 | 29 | 24 | 24 | 15 | 13 | 160 |
| EE/Pow | 33 | 24 | 31 | 30 | 24 | 29 | 23 | 194 |
| IE | 44 | 66 | 65 | 59 | 64 | 69 | 40 | 407 |
| ME/MENG | 47 | 48 | 50 | 59 | 60 | 81 | 42 | 387 |
| ME/MEP | 13 | 22 | 17 | 25 | 20 | 23 | 19 | 139 |
| MINE | 2 | 3 | 4 | 5 | 6 | 11 | 6 | 37 |
| NE/MPh | | | 4 | 11 | 10 | 6 | 5 | 36 |
| NE/Pow | 2 | | 1 | | | 4 | | 7 |
| NE/RadP | | | 2 | 7 | 3 | 3 | | 15 |
| Total | 243 | 328 | 310 | 384 | 360 | 384 | 208 | 2217 |

Employment Status

Employment Rate by Program of Study for each Graduation Year



Employment Rate by Program of Study for each Graduation Year



Employed but Seeking new Employment

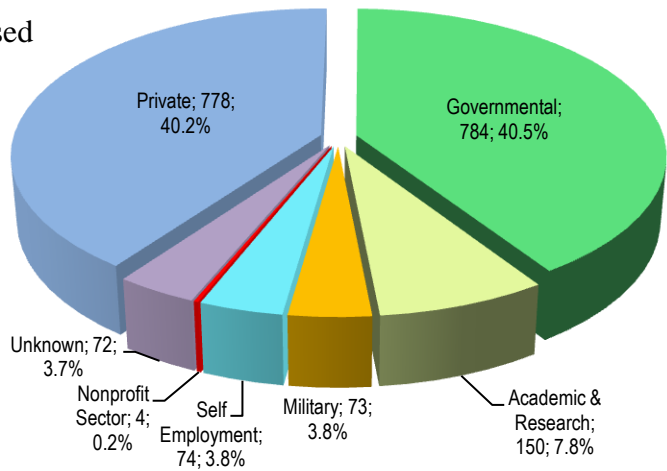
| | 2007-08 | 2008-09 | 2009-10 | 2010-11 | 2011-12 | 2012-13 | 2013-14 | Total |
|-----|---------|---------|---------|---------|---------|---------|---------|-------|
| No. | 1 | 4 | 5 | 10 | 37 | 105 | 28 | 190 |

| Program | No. |
|---------|-----|
| AE | 9 |
| CE | 19 |
| CHE | 26 |
| EE/Bio | 1 |
| EE/Comp | 5 |
| EE/Elec | 10 |
| EE/Pow | 10 |

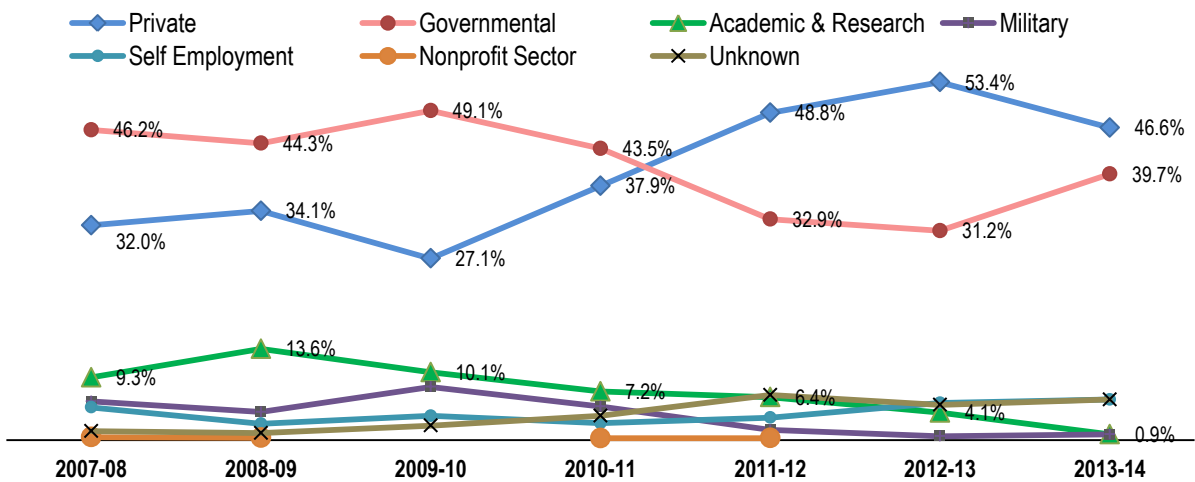
| Program | No. |
|---------|-----|
| IE | 38 |
| ME/MENG | 38 |
| ME/MEP | 17 |
| MINE | 8 |
| NE/MPh | 5 |
| NE/Pow | 1 |
| NE/RadP | 3 |

Sector Specific Employment Distribution

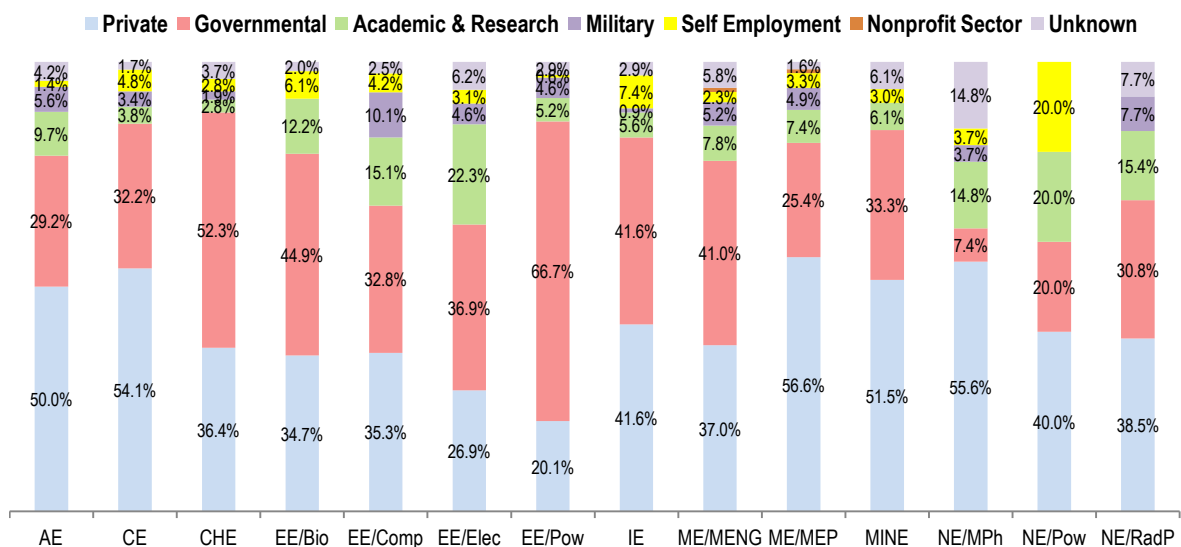
These are the most common fields used to identify where FoE students are finding employment after graduation. There are less than 4 percent of the respondents did not specify where they work. The major sectors are governmental sector, private sector, and academic and research institutions.



Employment Sector Type by Graduation Year

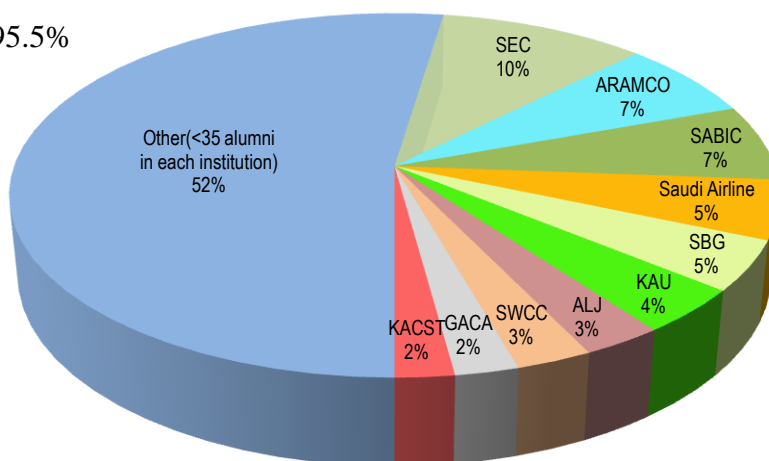


Sector Specific Employment by Program of Study



Employers

The respondents were asked to provide us with their employer name, 95.5% responded. A total of 846 graduates are working in 10 organizations, see table below, and 931 are distributed within 366 different companies or institutions.



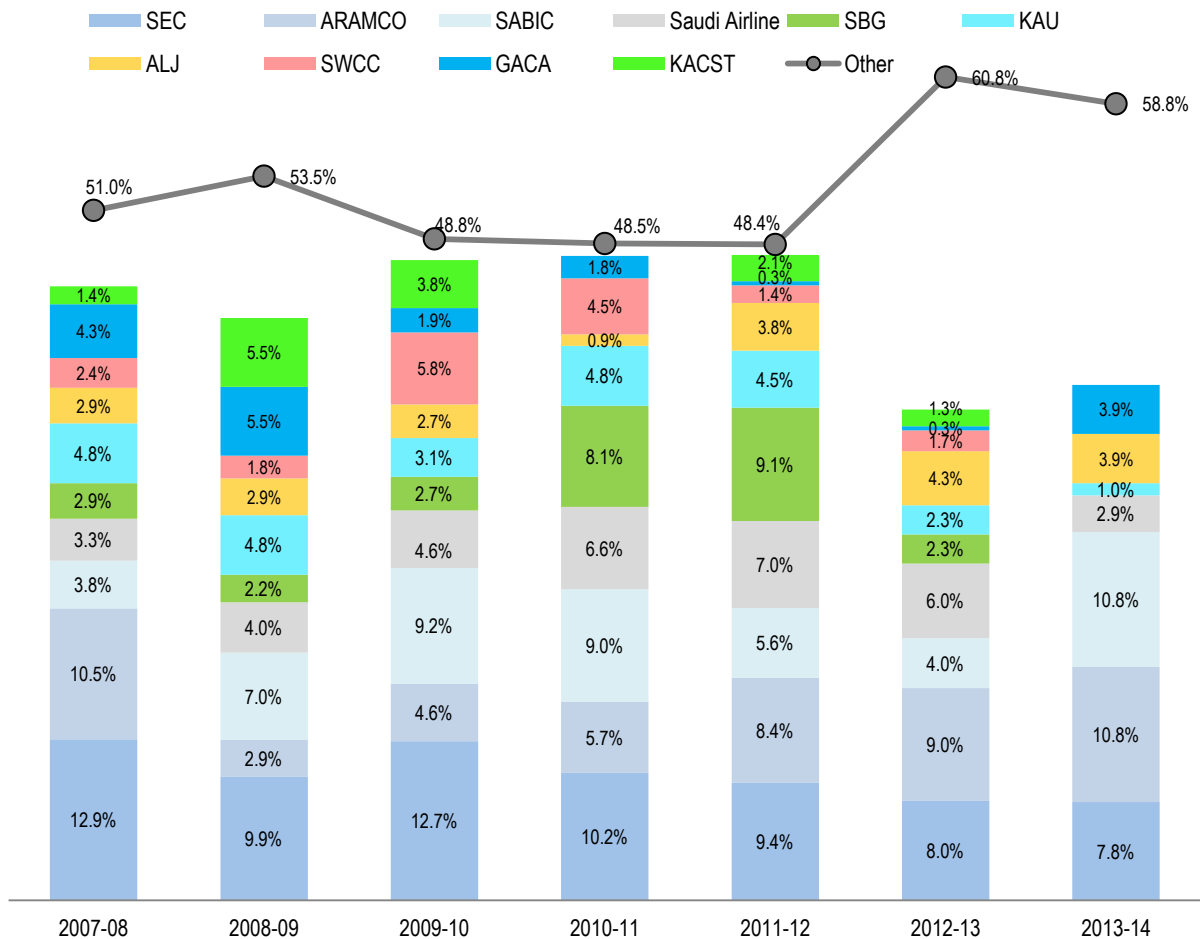
The Employers of Engineering Alumni

| Employer | No of Alumni |
|--|--------------|
| Saudi Electricity Company (SEC) | 180 |
| ARAMCO | 123 |
| SABIC | 120 |
| Saudi Airlines | 93 |
| Saudi Binladin Group (SBG) | 79 |
| King Abdulaziz University (KAU) | 71 |
| Abdul Latif Jameel (ALJ) | 52 |
| Saline Water Conversion Corporation (SWCC) | 49 |
| General Authority of Civil Aviation (GACA) | 41 |
| KACST | 38 |
| Other (366 Organizations) (Less than 35 Alumni in each organizations) | 931 |
| Total | 1777 |

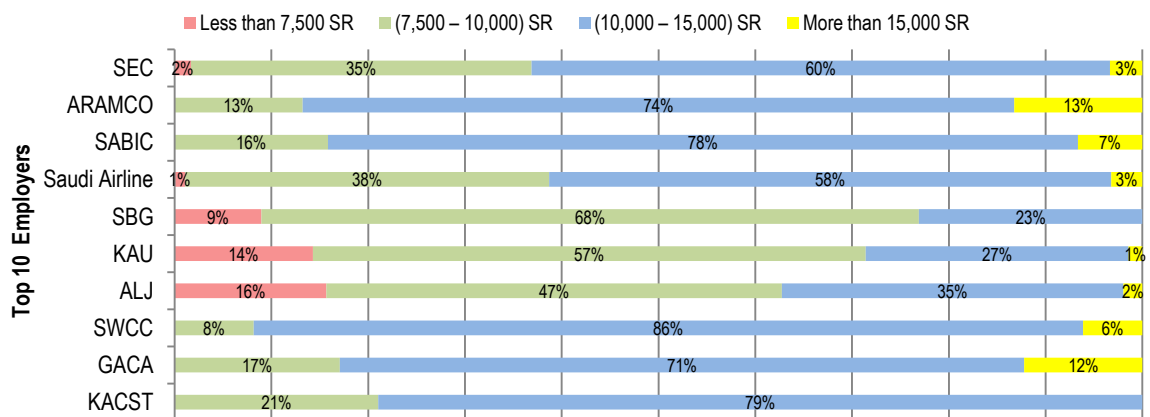
Employers

Top 10 Employers of Engineering Alumni

The following chart shows that the top 10 employers are hiring around 50% of engineering graduates each year. This is with the exception of this year (2013-2014) and the last year (2012-2013), where hiring of FoE graduates were represented by employers other than the top 10 at approximately 60% (as shown on the chart below).



Current Salary / percentage of grad entras



Top Employers by Program of Study

| Program / Organization | # | % |
|---|------------|--------------|
| AE | | |
| Saudi Airlines | 11 | 16.4 |
| Saudi Binladin Group (SBG) | 6 | 9.0 |
| General Authority of Civil Aviation (GACA) | 5 | 7.5 |
| McDermott International | 4 | 6.0 |
| KAU | 4 | 6.0 |
| National Air Services | 4 | 6.0 |
| Halliburton | 3 | 4.5 |
| Other | 30 | 44.8 |
| Total | 67 | 100.0 |
| CE | | |
| Dar Al-Handasah | 23 | 8.4 |
| Saudi Binladin Group (SBG) | 21 | 7.7 |
| King Abdullah Bin Abdul Aziz AL HARAM Expansion Project | 21 | 7.7 |
| Ministry of Municipal and Rural Affairs | 20 | 7.3 |
| AlMuhaidib Contracting | 15 | 5.5 |
| AECOM | 12 | 4.4 |
| KAU | 10 | 3.6 |
| Royal Commission for Jubail and Yanbu (RCJY) | 9 | 3.3 |
| ARAMCO | 6 | 2.2 |
| Hyder Consulting | 6 | 2.2 |
| General Authority of Civil Aviation (GACA) | 6 | 2.2 |
| Saudi Electricity Company (SEC) | 5 | 1.8 |
| Other | 120 | 43.8 |
| Total | 274 | 100.0 |
| CHE | | |
| SABIC | 44 | 22.2 |
| ARAMCO | 37 | 18.7 |
| Saudi Binladin Group (SBG) | 12 | 6.1 |
| Saline Water Conversion Corporation | 12 | 6.1 |
| Ma'aden | 5 | 2.5 |
| KAU | 4 | 2.0 |
| National Water Company | 4 | 2.0 |
| SDARA | 3 | 1.5 |
| Petro Rabigh | 3 | 1.5 |
| CRISTAL | 3 | 1.5 |
| Other | 71 | 35.9 |
| Total | 198 | 100.0 |

| Program / Organization | # | % |
|--|------------|--------------|
| EE/Bio | | |
| Saudi Food & Drug Authority | 8 | 17.4 |
| KAU | 5 | 10.9 |
| Saudi Electricity Company (SEC) | 4 | 8.7 |
| GENERAL ELECTRIC HELTHCARE | 4 | 8.7 |
| Al-Faisaliah Medical Systems | 4 | 8.7 |
| SABIC | 3 | 6.5 |
| Other | 18 | 39.1 |
| Total | 46 | 100.0 |
| EE/Comp | | |
| Saudi Airlines | 10 | 9.0 |
| Saudi Electricity Company (SEC) | 10 | 9.0 |
| Saudi Binladin Group (SBG) | 10 | 9.0 |
| Abdul Latif Jameel | 6 | 5.4 |
| KAU | 5 | 4.5 |
| ARAMCO | 5 | 4.5 |
| KACST | 5 | 4.5 |
| Other | 60 | 54.1 |
| Total | 111 | 100.0 |
| EE/Elec | | |
| KACST | 19 | 16.2 |
| Saudi Electricity Company (SEC) | 16 | 13.7 |
| SABIC | 10 | 8.5 |
| ARAMCO | 5 | 4.3 |
| Saudi Airlines | 5 | 4.3 |
| KAU | 4 | 3.4 |
| General Authority of Civil Aviation (GACA) | 4 | 3.4 |
| Other | 54 | 46.2 |
| Total | 117 | 100.0 |
| EE/Pow | | |
| Saudi Electricity Company (SEC) | 88 | 52.4 |
| ARAMCO | 16 | 9.5 |
| SABIC | 6 | 3.6 |
| Interior Ministry of Saudi Arabia | 5 | 3.0 |
| ABB for Electrical Industries | 5 | 3.0 |
| Siemens | 4 | 2.4 |
| KAU | 4 | 2.4 |
| Innovators Consulting Engineers | 3 | 1.8 |
| Saline Water Conversion Corporation | 3 | 1.8 |
| Other | 34 | 20.2 |
| Total | 168 | 100.0 |

Employers

Top Employers by Program of Study

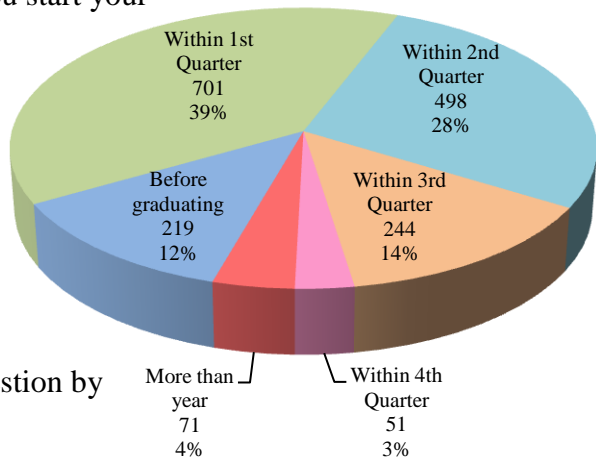
| Program / Organization | # | % |
|--|------------|--------------|
| IE | | |
| Saudi Airlines | 45 | 15.1 |
| Saudi Electricity Company (SEC) | 34 | 11.4 |
| Abdul Latif Jameel | 20 | 6.7 |
| General Authority of Civil Aviation (GACA) | 16 | 5.4 |
| SABIC | 15 | 5.0 |
| KAU | 14 | 4.7 |
| Savola | 12 | 4.0 |
| ARAMCO | 10 | 3.3 |
| National Commercial Bank | 9 | 3.0 |
| Azizia Panda United | 7 | 2.3 |
| UNILEVER | 6 | 2.0 |
| Ministry of Municipal and Rural Affairs | 5 | 1.7 |
| Saline Water Conversion Corporation | 4 | 1.3 |
| Saudi Binladin Group (SBG) | 4 | 1.3 |
| Other | 98 | 32.8 |
| Total | 299 | 100.0 |
| ME/MENG | | |
| ARAMCO | 42 | 13.2 |
| SABIC | 34 | 10.7 |
| Saudi Airlines | 18 | 5.7 |
| Saudi Electricity Company (SEC) | 16 | 5.0 |
| Saline Water Conversion Corporation | 14 | 4.4 |
| Saudi Binladin Group (SBG) | 12 | 3.8 |
| Abdul Latif Jameel | 10 | 3.1 |
| KAU | 9 | 2.8 |
| Interior Ministry of Saudi Arabia | 8 | 2.5 |
| KACST | 8 | 2.5 |
| Other | 147 | 46.2 |
| Total | 318 | 100.0 |
| ME/MEP | | |
| Abdul Latif Jameel | 11 | 9.6 |
| Saline Water Conversion Corporation | 9 | 7.9 |
| Saudi Binladin Group (SBG) | 7 | 6.1 |
| KAU | 5 | 4.4 |
| Saudi Electricity Company (SEC) | 5 | 4.4 |
| National Water Company | 5 | 4.4 |
| SABIC | 5 | 4.4 |
| Other | 67 | 58.8 |
| Total | 114 | 100.0 |

| Program / Organization | # | % |
|---|-----------|--------------|
| MINE | | |
| Ma'aden | 11 | 39.3 |
| AECOM | 2 | 7.1 |
| Saudi Electricity Company (SEC) | 2 | 7.1 |
| KAU | 2 | 7.1 |
| Other | 11 | 39.3 |
| Total | 28 | 100.0 |
| NE | | |
| KAU | 5 | 13.5 |
| Ministry of Transport | 3 | 8.1 |
| PHILIPS HEALTH CARE | 3 | 8.1 |
| Al Jazeera Bank | 2 | 5.4 |
| Al-Faisaliah Medical Systems | 2 | 5.4 |
| Ministry of Defence and Aviation | 2 | 5.4 |
| Samsung C&T Corporation | 2 | 5.4 |
| Dr. Soliman Fakeeh Hospital | 1 | 2.7 |
| Halliburton | 1 | 2.7 |
| Hyundai Heavy Industries | 1 | 2.7 |
| Insulated Roofs & Walls Industrial Co.,Ltd. | 1 | 2.7 |
| KACST | 1 | 2.7 |
| King Abdulaziz University Hospital | 1 | 2.7 |
| Masoud Mubareek Est. | 1 | 2.7 |
| Ministry of Health | 1 | 2.7 |
| Napco Saudi Arabia | 1 | 2.7 |
| Presidency of Meteorology and Environment (PME) | 1 | 2.7 |
| Prince Mohammed Medical City | 1 | 2.7 |
| Saudi Binladin Group (SBG) | 1 | 2.7 |
| Saudi Customs | 1 | 2.7 |
| Total Safety Quality Center | 1 | 2.7 |
| Wadi Jeddah | 1 | 2.7 |
| Al Bassami International Business Group Co. | 1 | 2.7 |
| Tawtain Company | 1 | 2.7 |
| Support for Digital Solutions Company | 1 | 2.7 |
| Total | 37 | 100.0 |

The details are tabulated in Appendix B.

Time of Getting a Job

In response to the question "When did you start your first work?" a total of 1784 out of 1860 answered the question. More than three-fourths, 79.5% (1418/1784), of the respondents state that they started working within the first 6 months after graduation or before graduation. The following table shows answers to the question by program of study.

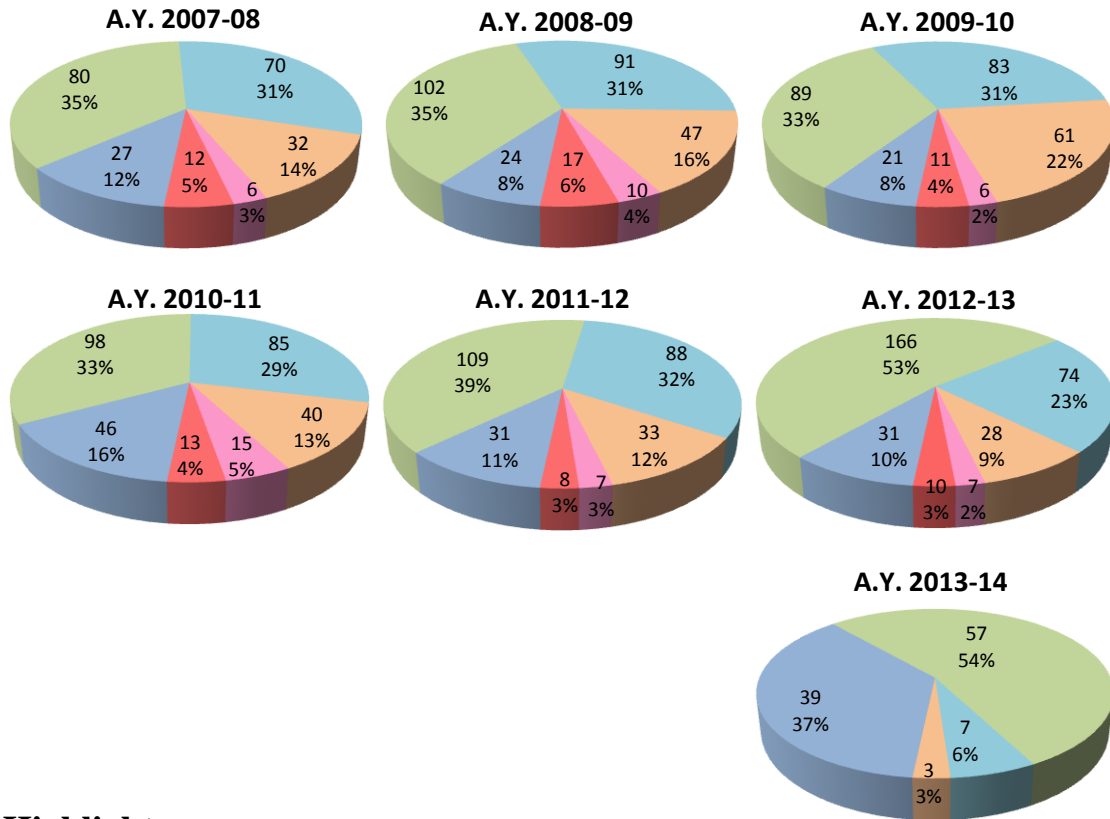
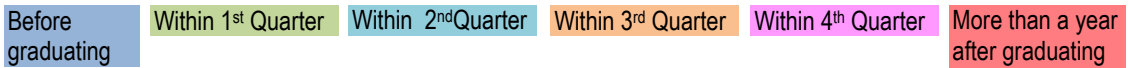


Respondents by Program of Study (Numbers and Percentages)

| Program | Before graduating | Within 1st Quarter | Within 2nd Quarter | Within 3rd Quarter | Within 4th Quarter | More than a year after graduating | Total |
|--------------|-------------------|--------------------|--------------------|--------------------|--------------------|-----------------------------------|-------------|
| AE | 4 | 23 | 12 | 9 | 4 | 12 | 64 |
| | 6.3 | 35.9 | 18.8 | 14.1 | 6.3 | 18.8 | 100.0 |
| CE | 34 | 143 | 64 | 18 | 6 | 6 | 271 |
| | 12.5 | 52.8 | 23.6 | 6.6 | 2.2 | 2.2 | 100.0 |
| CHE | 21 | 70 | 67 | 25 | 6 | 5 | 194 |
| | 10.8 | 36.1 | 34.5 | 12.9 | 3.1 | 2.6 | 100.0 |
| EE/Bio | 8 | 13 | 10 | 7 | 4 | 2 | 44 |
| | 18.2 | 29.5 | 22.7 | 15.9 | 9.1 | 4.5 | 100.0 |
| EE/Comp | 9 | 29 | 37 | 21 | 4 | 6 | 106 |
| | 8.5 | 27.4 | 34.9 | 19.8 | 3.8 | 5.7 | 100.0 |
| EE/Elec | 11 | 42 | 40 | 19 | 6 | 4 | 122 |
| | 9.0 | 34.4 | 32.8 | 15.6 | 4.9 | 3.3 | 100.0 |
| EE/Pow | 9 | 73 | 48 | 25 | 2 | 6 | 163 |
| | 5.5 | 44.8 | 29.4 | 15.3 | 1.2 | 3.7 | 100.0 |
| IE | 54 | 116 | 86 | 43 | 5 | 9 | 313 |
| | 17.3 | 37.1 | 27.5 | 13.7 | 1.6 | 2.9 | 100.0 |
| ME/MENG | 48 | 130 | 91 | 50 | 4 | 6 | 329 |
| | 14.6 | 39.5 | 27.7 | 15.2 | 1.2 | 1.8 | 100.0 |
| ME/MEP | 10 | 46 | 31 | 18 | 7 | 3 | 115 |
| | 8.7 | 40.0 | 27.0 | 15.7 | 6.1 | 2.6 | 100.0 |
| MINE | 5 | 12 | 5 | 3 | 2 | 2 | 29 |
| | 17.2 | 41.4 | 17.2 | 10.3 | 6.9 | 6.9 | 100.0 |
| NE/MPh | 4 | 1 | 4 | 5 | | 4 | 18 |
| | 22.2 | 5.6 | 22.2 | 27.8 | | 22.2 | 100.0 |
| NE/Pow | 1 | | 2 | | | 2 | 5 |
| | 20.0 | | 40.0 | | | 40.0 | 100.0 |
| NE/RadP | 1 | 3 | 1 | 1 | 1 | 4 | 11 |
| | 9.1 | 27.3 | 9.1 | 9.1 | 9.1 | 36.4 | 100.0 |
| Total | 219 | 701 | 498 | 244 | 51 | 71 | 1784 |

Time of Getting a Job

By Academic Year



Highlights:

By Graduation Year

- ✓ For AY 2007-08, 78% (n=177) started working within first 6 months after graduation or before graduation.
- ✓ For AY 2008-09, 74% (n=217) started working within first 6 months after graduation or before graduation.
- ✓ For AY 2009-10, 72% (n=193) started working within first 6 months after graduation or before graduation.
- ✓ For AY 2010-11, 78% (n=229) started working within first 6 months after graduation or before graduation.
- ✓ For AY 2011-12, 82% (n=228) started working within first 6 months after graduation or before graduation.
- ✓ For AY 2012-13, 86% (n=271) started working within first 6 months after graduation or before graduation.
- ✓ For AY 2013-14, 97% (n=103) started working within first 6 months after graduation or before graduation.

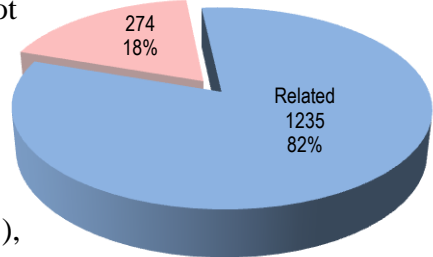
Highlights:

By Program of Study

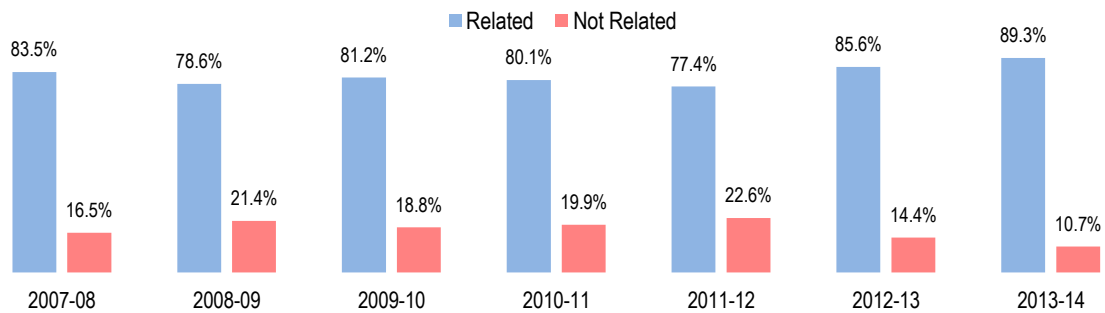
- ✓ For Aeronautical Engineering, 61% (n=39) started working within first 6 months after graduation or before graduation.
- ✓ For Civil Engineering, 89% (n=241) started working within first 6 months after graduation or before graduation.
- ✓ For Chemical Engineering, 81% (n=158) started working within first 6 months after graduation or before graduation.
- ✓ For EE/Bio-Medical Engineering, 70% (n=31) started working within first 6 months after graduation or before graduation.
- ✓ For EE/Computers Engineering, 71% (n=75) started working within first 6 months after graduation or before graduation.
- ✓ For EE/Electronics & Communications Engineering, 76% (n=93) started working within first 6 months after graduation or before graduation.
- ✓ For EE/Power & Machine Engineering, 80% (n=130) started working within first 6 months after graduation or before graduation.
- ✓ For Industrial Engineering, 82% (n=256) started working within first 6 months after graduation or before graduation.
- ✓ For ME/Production Engineering & Mechanical Systems Design, 82% (n=269) started working within first 6 months after graduation or before graduation.
- ✓ For ME/Thermal Engineering & Desalination Technology, 76% (n=87) started working within first 6 months after graduation or before graduation.
- ✓ For Mining Engineering, 76% (n=22) started working within first 6 months after graduation or before graduation.
- ✓ For Nuclear Engineering, 50% (n=17) started working within first 6 months after graduation or before graduation.

First Job - Major Comparison

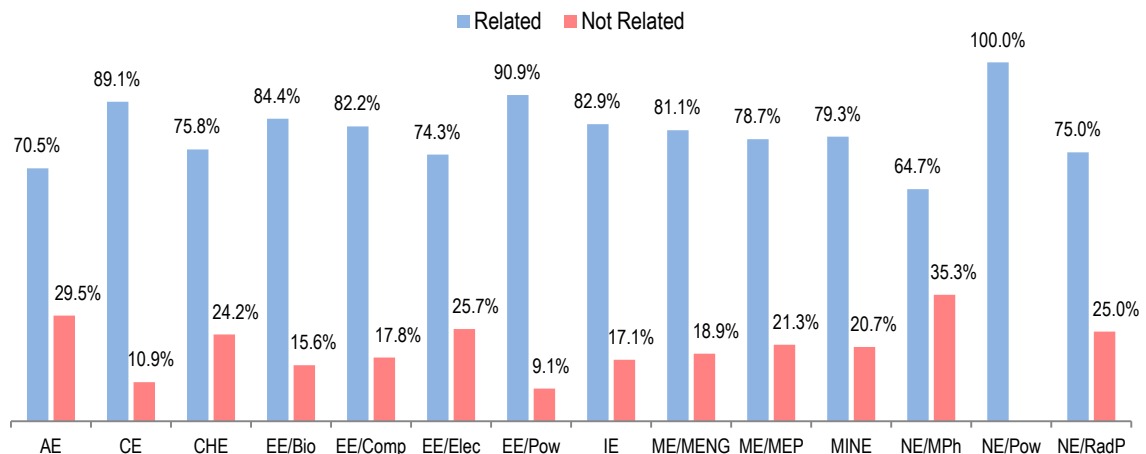
Survey respondents were asked: Was their first work related to their area of study? Regarding this question, a total of 1509 out of 2109 answered and 82% of respondents replied with related while 18% responded with not related. The distribution of responses by program of study is as follows, responses with related are as follows: Aeronautical 43 (71%), Civil 196 (89%), Chemical 119 (76%), Electrical-Biomedical 27 (84%), Electrical Computers 74 (82%), Electrical-Electronics and Communications 81 (74%), Electrical-Power Engineering 130 (91%), Industrial 232 (83%), Mechanical/Production 219 (81%), Mechanical/Thermal 70 (79%), Mining 23 (79%), Nuclear/Medical Physics 11 (65%), Nuclear/Power 4 (100%), and Nuclear/Radiation Protection 6 (75%).



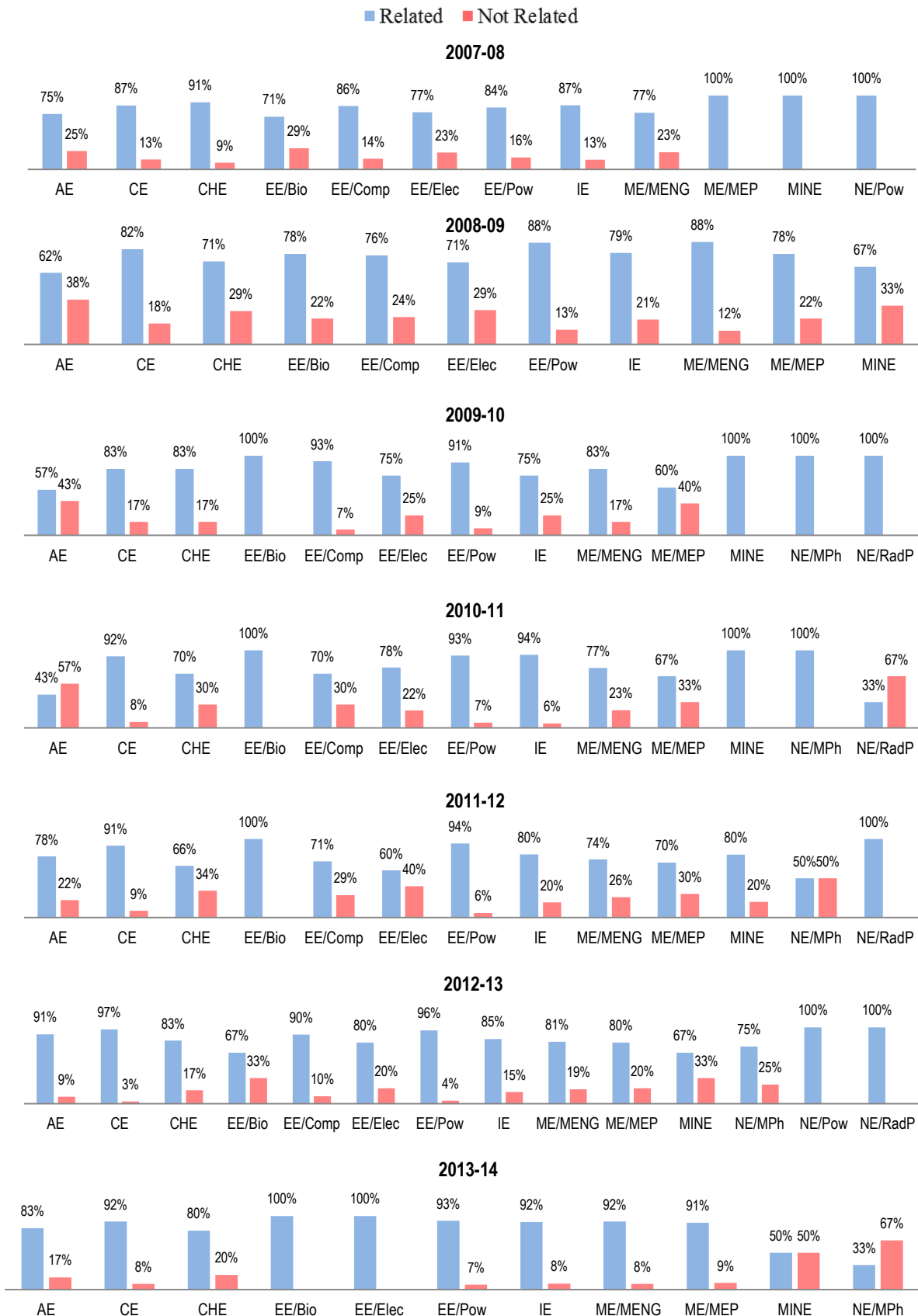
| | 2007-08 | 2008-09 | 2009-10 | 2010-11 | 2011-12 | 2012-13 | 2013-14 | Total |
|--------------|------------|------------|------------|------------|------------|------------|------------|-------------|
| Not Related | 36 | 54 | 34 | 33 | 59 | 46 | 12 | 274 |
| Related | 182 | 198 | 147 | 133 | 202 | 273 | 100 | 1235 |
| Total | 218 | 252 | 181 | 166 | 261 | 319 | 112 | 1509 |



Was Your First Work Related to Your Area of Study?
Responses by Program of Study

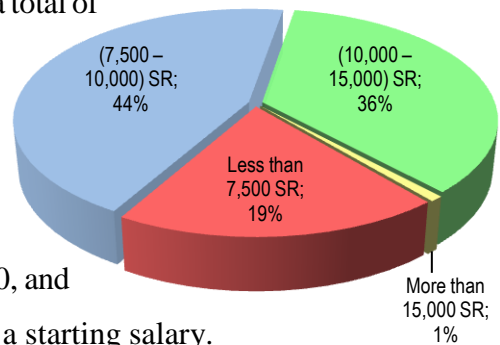


First Job - Major Comparison for each Graduation Year



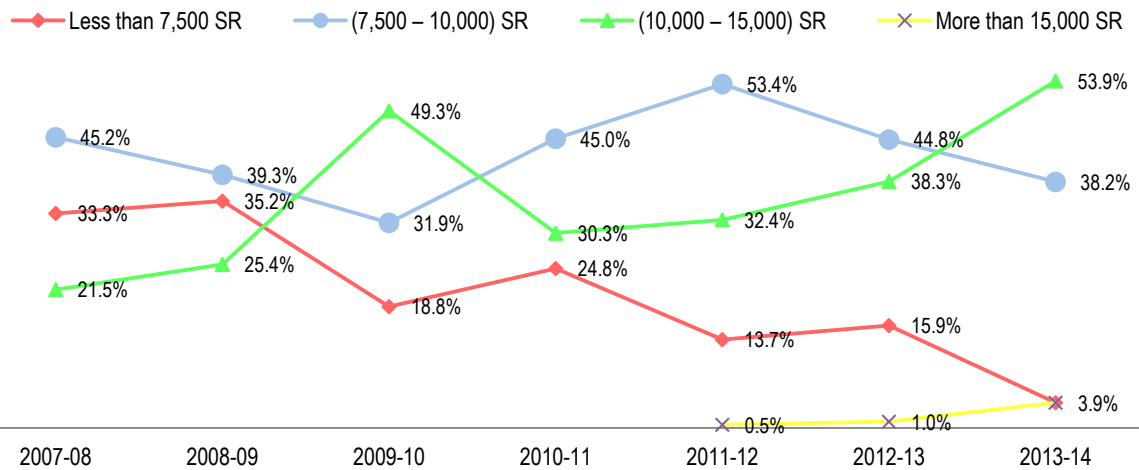
Graduates Starting Salaries

In response to the question about starting salary, a total of 1007 of FoE graduates answered this question as follows: 477 (44%) of the respondents state that it was between 7,500 and 10,000 SR, 357 (36%) said it was between 10,000 and 15,000, 195 (19%) said that the first salary was less than 7,500, and 8 (1%) earned more than 15,000 SR monthly as a starting salary.

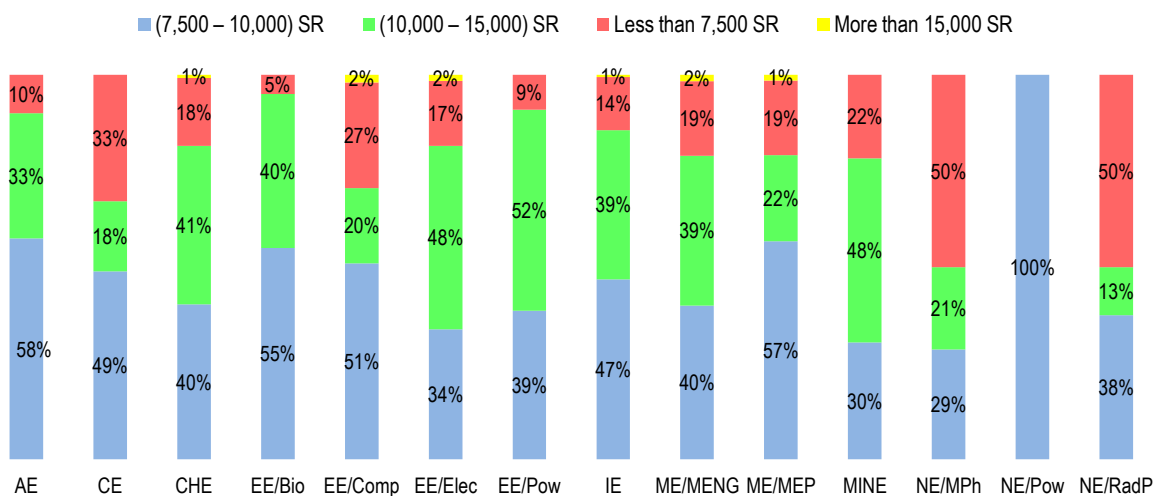


The overall average starting salaries is between 7,500 and 10,000 SR.

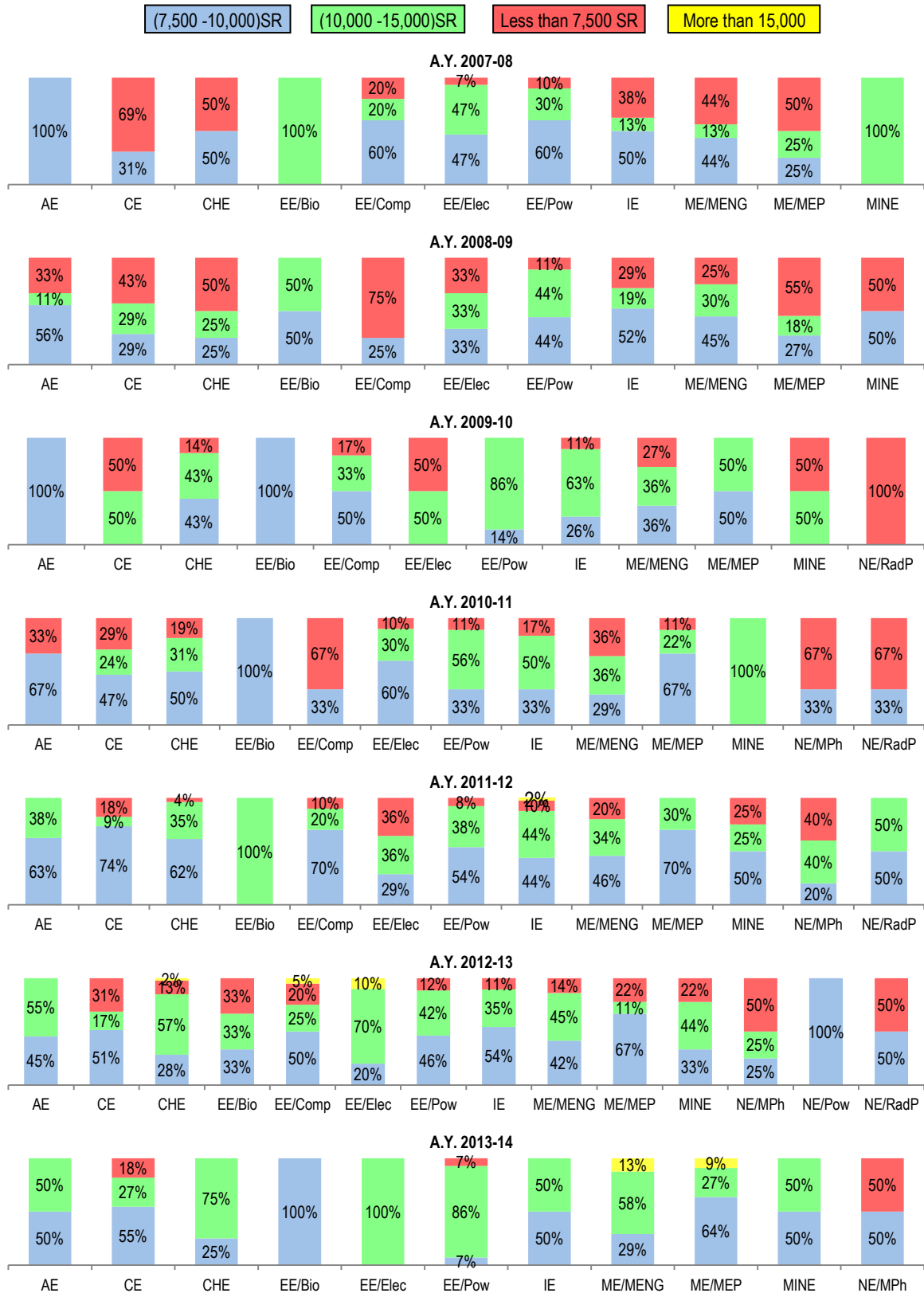
How starting salaries for graduates have been changed between 2007 and Spring 2014



Graduates Starting Salaries by Program of Study



Graduates Starting Salaries by Program of Study for each Graduation Year

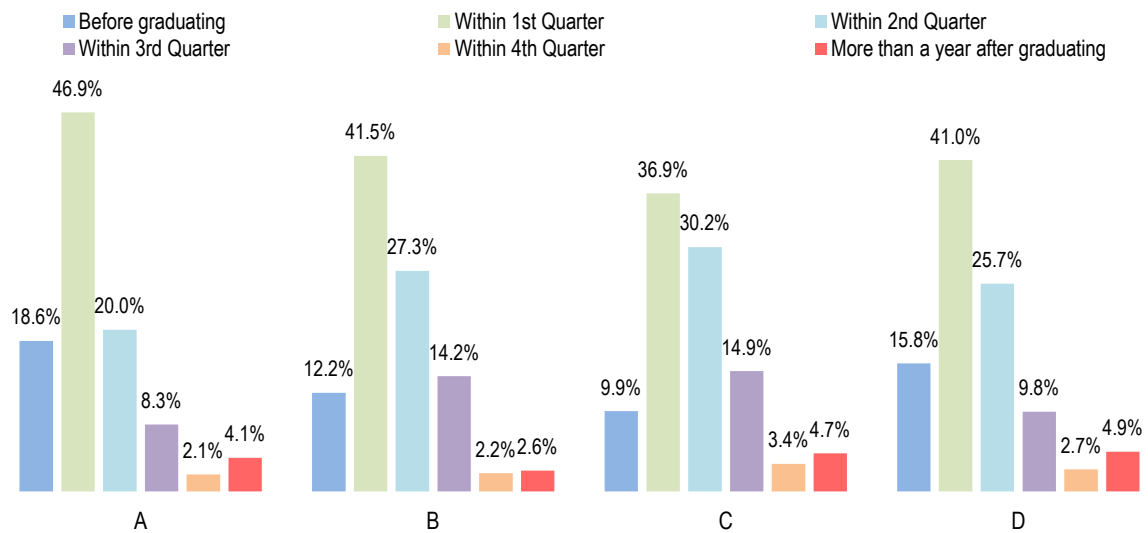


Effect of GPA on Time of Getting a Job and on the Starting Salary

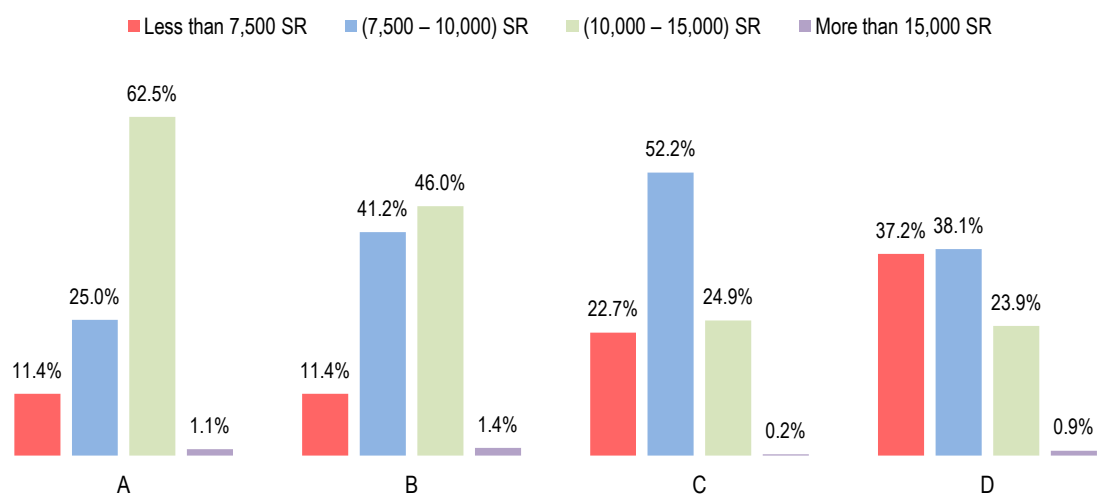
The following charts show the effect of alumni grades on time of getting a job and starting salary.

| | Grade | | | | |
|----------------------------|-------|-----|-----|-----|-------------|
| | A | B | C | D | Total |
| Time of getting Job | 145 | 583 | 827 | 183 | 1738 |
| Starting Salary | 88 | 352 | 454 | 113 | 1007 |

Effect of GPA on Time of Getting a Job



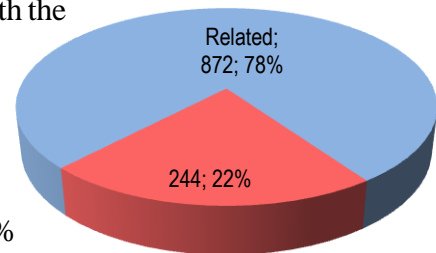
Effect of GPA on Starting Salaries



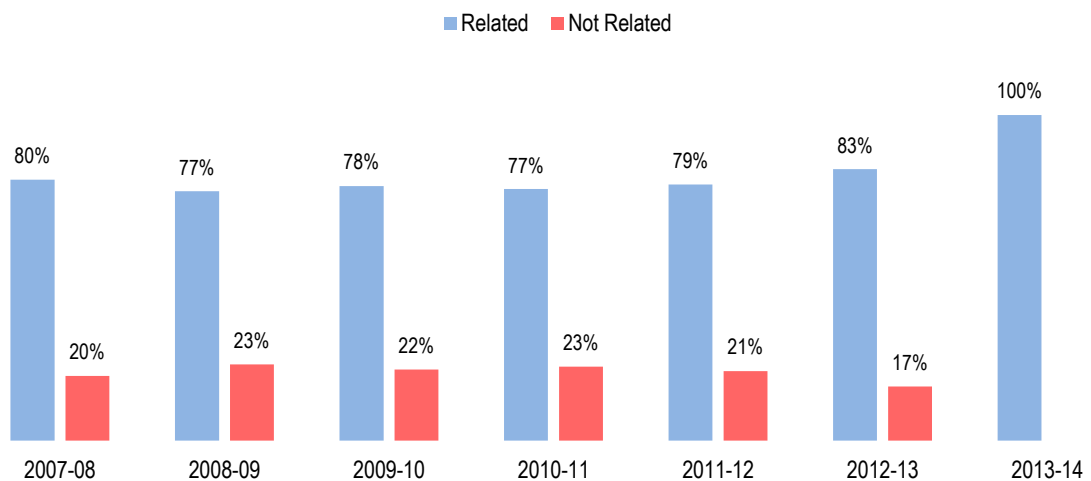
The details are tabulated in Appendix A.

Current Job - Major Comparison (if applicable)

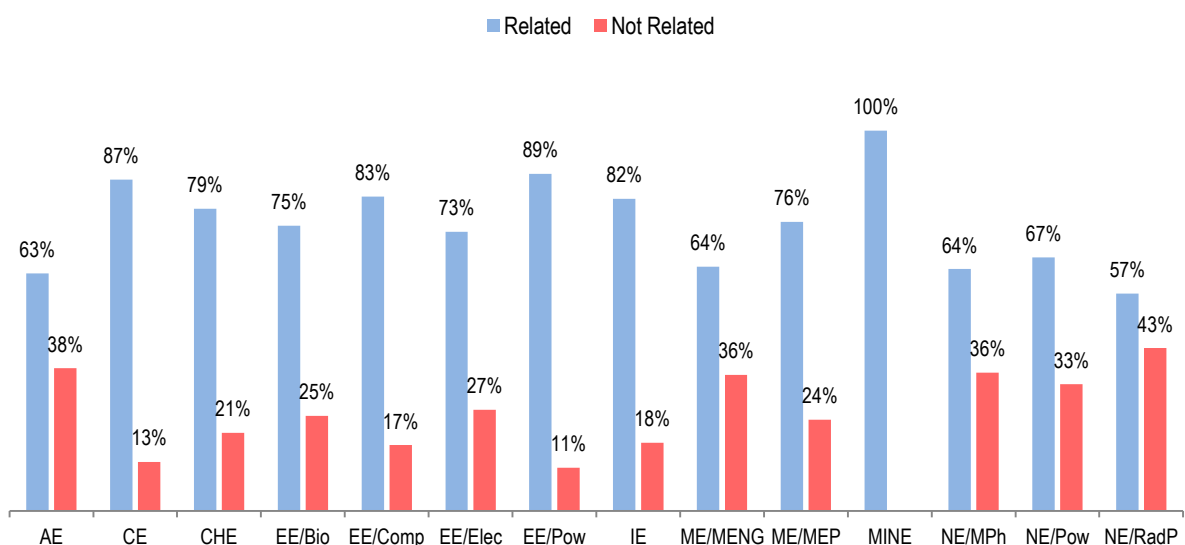
In cases of graduates who stay longer than one year with the same employer, or moved to different position, and those transferred to new employer, they answered the question: “Is your current work related to your area of study?”. A total of 1116 out of 1860 answered, 78% replied with related while 22% responded with not related.



**Is Your Current Work Related to Your Area of Study?
Responses by Graduation Year**

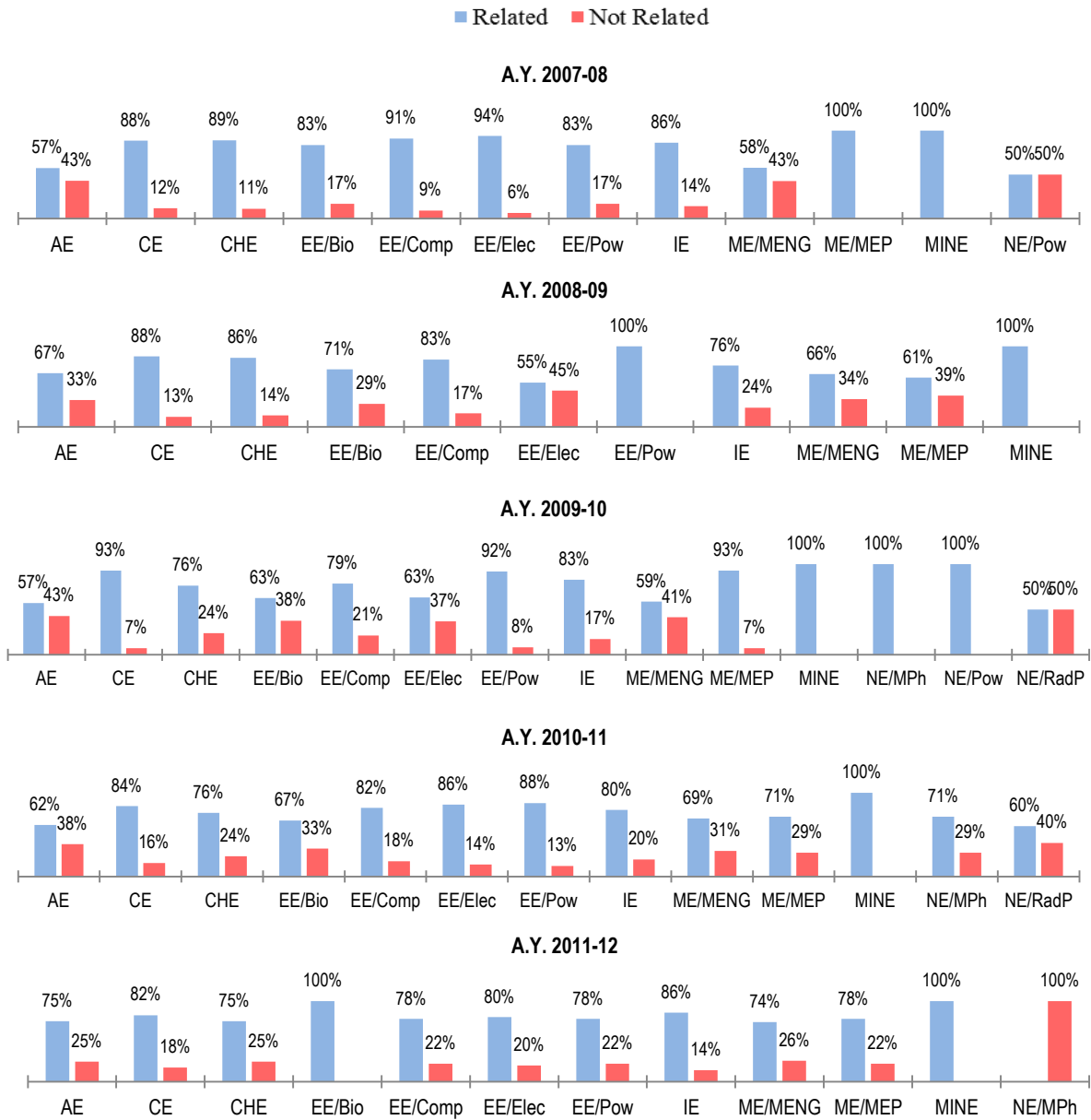


**Is Your Current Work Related to Your Area of Study?
Responses by Program of Study**



Current Job

Current Job-Major Comparison for each Graduation Year

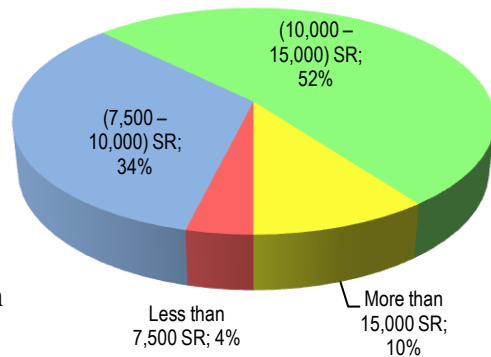


| | CE | CHE | EE/Bio | EE/Comp | EE/Pow | IE | ME/MENG | ME/MEP | Total No. |
|------------------|----------|----------|----------|----------|----------|----------|----------|----------|-----------|
| 2012-13 | 3 | 1 | 1 | 1 | 1 | 5 | 5 | 1 | 18 |
| Related | 3 | 1 | 1 | 1 | 1 | 5 | 3 | | 15 |
| Not Related | | | | | | | 2 | 1 | 3 |
| 2013-14 | | | | | | 3 | | | 3 |
| Related | | | | | | 3 | | | 3 |
| Total No. | 3 | 1 | 1 | 1 | 1 | 8 | 5 | 1 | 21 |

The details are tabulated in Appendix A.

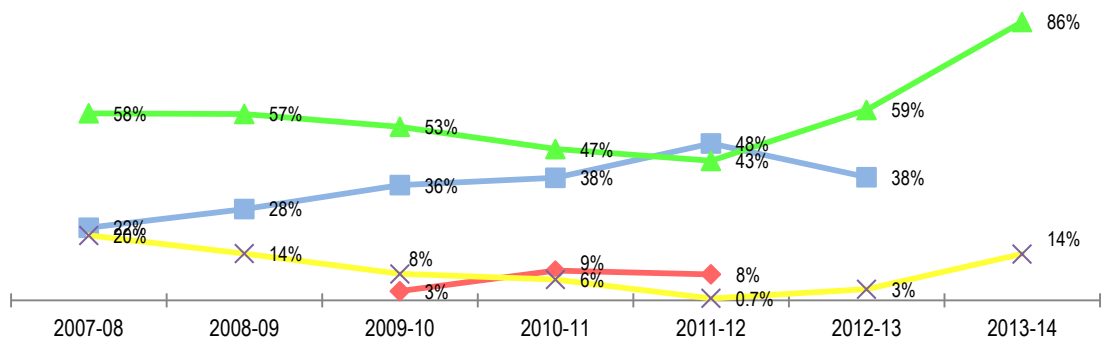
Graduates Current Salaries (if applicable)

In cases of graduates who stay longer than one year with the same employer, or moved to different position, or transferred to new employer, they answered the question about Current Salary, a total of 1204 out of 1860 responded, 631(52%) said it's in the range (10,000-15,000)SR , 404 (34%) responded with (7,500-10,000)SR, 123 (10%) said it's more than 15,000, and 46 (4%) said it's less than 7,500 SR.



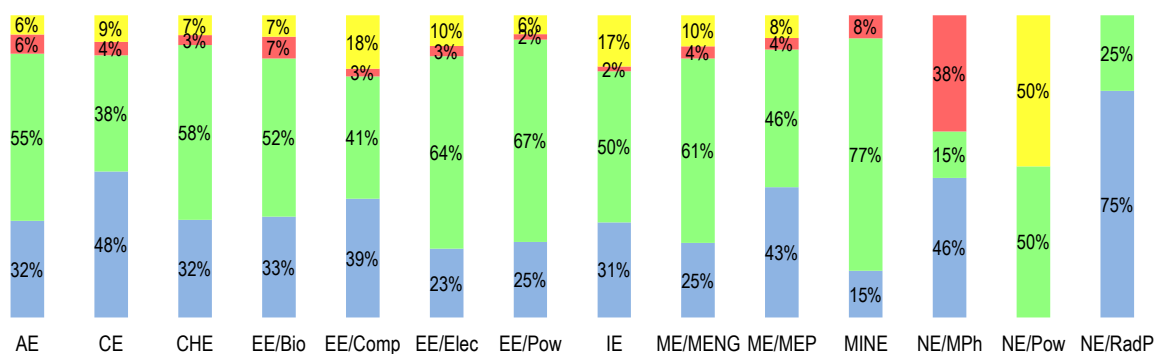
| | 2007-08 | 2008-09 | 2009-10 | 2010-11 | 2011-12 | 2012-13 | 2013-14 | Total |
|----------------------|------------|------------|------------|------------|------------|-----------|----------|-------------|
| Less than 7,500 SR | | | 7 | 27 | 12 | | | 46 |
| (7,500 – 10,000) SR | 47 | 76 | 87 | 111 | 72 | 11 | | 404 |
| (10,000 – 15,000) SR | 121 | 155 | 131 | 137 | 64 | 17 | 6 | 631 |
| More than 15,000 SR | 42 | 39 | 20 | 19 | 1 | 1 | 1 | 123 |
| Total | 210 | 270 | 245 | 294 | 149 | 29 | 7 | 1204 |

◆ Less than 7,500 SR
 ■ (7,500 – 10,000) SR
 ▲ (10,000 – 15,000) SR
 ✕ More than 15,000 SR



Current Salary Rate by Program of Study

■ (7,500 – 10,000) SR
 ■ (10,000 – 15,000) SR
 ■ Less than 7,500 SR
 ■ More than 15,000 SR



Current Job

Current Salary Rate by Program of Study for each Graduation Year

The following charts show the current salary ranges by program of study for each graduation year.



| | AE | CE | CHE | EE | | | IE | ME | | MINE | Ne | | Total |
|----------------------|----|----|-----|-----|------|-----|----|------|-----|------|------|----|-------|
| | | | | Bio | Comp | Pow | | Meng | Mep | | RadP | | |
| 2012-13 | | 4 | 2 | 1 | 1 | 3 | 7 | 6 | 3 | 1 | 1 | 29 | |
| (10,000 – 15,000) SR | | 2 | | 1 | 1 | 1 | 5 | 4 | 2 | 1 | | 17 | |
| (7,500 – 10,000) SR | | 2 | 1 | | | 2 | 2 | 2 | 1 | | 1 | 11 | |
| More than 15,000 SR | | | 1 | | | | | | | | | 1 | |
| 2013-14 | 1 | | | | | | 4 | | 2 | | | 7 | |
| (10,000 – 15,000) SR | 1 | | | | | | 4 | | 1 | | | 6 | |
| More than 15,000 SR | | | | | | | | | 1 | | | 1 | |
| Total | 1 | 4 | 2 | 1 | 1 | 3 | 11 | 6 | 5 | 1 | 1 | 36 | |

Appendix A – Data Tabulations

Response Rate by Graduation Year

| A.Y | Population | Respondents | % |
|--------------|-------------|-------------|--------------|
| 2007-2008 | 358 | 243 | 67.9% |
| 2008-2009 | 441 | 328 | 74.4% |
| 2009-2010 | 392 | 310 | 79.1% |
| 2010-2011 | 418 | 384 | 91.9% |
| 2011-2012 | 374 | 360 | 96.3% |
| 2012-2013 | 399 | 384 | 96.2% |
| 2013-2014 | 218 | 208 | 95.4% |
| Total | 2600 | 2217 | 85.3% |

Places of residence and total number of respondents by Class Year (Freshman Year)

| KSA Province/Country | Class Year | | | | | | | | | | | | | Total |
|----------------------|------------|----------|-----------|-----------|-----------|------------|------------|------------|------------|------------|------------|------------|-----------|-------------|
| | 98 | 99 | 00 | 01 | 02 | 03 | 04 | 05 | 06 | 07 | 08 | 09 | 10 | |
| Makkah | | 4 | 13 | 17 | 39 | 117 | 147 | 196 | 250 | 258 | 284 | 133 | 31 | 1490 |
| Eastern | | 1 | | | 1 | 13 | 22 | 24 | 32 | 30 | 34 | 19 | 4 | 180 |
| Al Madinah | | 1 | | 1 | 7 | 15 | 20 | 32 | 16 | 24 | 20 | 12 | 4 | 152 |
| Riyadh | 1 | 1 | 1 | 1 | 6 | 13 | 26 | 29 | 33 | 15 | 16 | 6 | | 148 |
| USA | | | | | | 6 | 14 | 20 | 23 | 15 | 7 | | | 85 |
| 'Asir | | | 1 | 1 | | 1 | 2 | 5 | 1 | 2 | 1 | 2 | | 16 |
| Jizan | | | | | 1 | 2 | 3 | 2 | 3 | 2 | 2 | 1 | | 16 |
| Tabuk | | | | 2 | | | | 5 | 2 | 1 | 4 | | | 14 |
| UK | | | | | 3 | | 4 | 1 | 3 | 1 | | | | 12 |
| Najran | | 1 | | | 1 | 1 | | | | 3 | 1 | 1 | | 8 |
| Bahrain | | | | | | 1 | | | 1 | | 2 | 1 | 2 | 7 |
| Canada | | | | | | 1 | 3 | | 1 | 1 | 1 | | | 7 |
| UAE | | | | | | | 1 | 1 | | | 2 | | | 4 |
| Al-Qassim | | | | 1 | | | | | | | 2 | | | 3 |
| Northern Borders | | | | | | | | | 1 | 2 | | | | 3 |
| Malaysia | | | | | 1 | 1 | | | | | | | | 2 |
| South Korea | | | | | | | | | | 1 | 1 | | | 2 |
| Al Jawf | | | | | | | | | | 1 | | | | 1 |
| Australia | | | | | | | | | 1 | | | | | 1 |
| China | | | | | | | | | | 1 | | | | 1 |
| Germany | | | | | | | 1 | | | | | | | 1 |
| Ha'il | | | | | | | 1 | | | | | | | 1 |
| Ireland | | | | | 1 | | | | | | | | | 1 |
| Poland | | | | | | | | | | 1 | | | | 1 |
| Spain | | | | | | | 1 | | | | | | | 1 |
| Yemen | | | | | | 1 | | | | | | | | 1 |
| Total | 1 | 8 | 15 | 23 | 60 | 172 | 245 | 315 | 367 | 358 | 377 | 175 | 41 | 2158 |

Appendix A – Data Tabulations

Employment Rate by Department/Program of Study and Graduation Year

| Dept/Program | Status | 2007-08 | 2008-09 | 2009-10 | 2010-11 | 2011-12 | 2012-13 | 2013-14 | Total |
|---|--------|-----------|-----------|-----------|-----------|-----------|-----------|-----------|------------|
| Aeronautical Engineering | | 9 | 14 | 9 | 18 | 11 | 15 | 9 | 85 |
| Employed | | 8 | 12 | 8 | 15 | 10 | 12 | 5 | 70 |
| | | 88.9 | 85.7 | 88.9 | 83.3 | 90.9 | 80.0 | 55.6 | 82.4 |
| Pursuing HE | | 1 | 2 | 1 | 3 | | 1 | | 8 |
| | | 11.1 | 14.3 | 11.1 | 16.7 | | 6.7 | 0.0 | 9.4 |
| Seeking Employment | | | | | | | 2 | 4 | 6 |
| | | | | | | | 13.3 | 44.4 | 7.1 |
| Self Employed | | | | | | 1 | | | 1 |
| | | | | | | 9.1 | | | 1.2 |
| Civil Engineering | | 32 | 54 | 43 | 63 | 59 | 44 | 26 | 321 |
| Employed | | 27 | 48 | 39 | 57 | 57 | 37 | 13 | 278 |
| | | 84.4 | 88.9 | 90.7 | 90.5 | 96.6 | 84.1 | 50.0 | 86.6 |
| Pursuing HE | | 2 | 5 | 1 | 4 | 1 | | 1 | 14 |
| | | 6.3 | 9.3 | 2.3 | 6.3 | 1.7 | | 3.8 | 4.4 |
| Seeking Employment | | | | | | | 3 | 12 | 15 |
| | | | | | | | 6.8 | 46.2 | 4.7 |
| Self Employed | | 3 | 1 | 3 | 2 | 1 | 4 | | 14 |
| | | 9.4 | 1.9 | 7.0 | 3.2 | 1.7 | 9.1 | | 4.4 |
| Chemical Engineering | | 11 | 35 | 26 | 45 | 49 | 54 | 17 | 237 |
| Employed | | 11 | 33 | 25 | 43 | 44 | 47 | 5 | 208 |
| | | 100.0 | 94.3 | 96.2 | 95.6 | 89.8 | 87.0 | 29.4 | 87.8 |
| Pursuing HE | | | 1 | | 2 | 3 | 3 | 2 | 11 |
| | | | 2.9 | | 4.4 | 6.1 | 5.6 | 11.8 | 4.6 |
| Seeking Employment | | | | | | | 3 | 9 | 12 |
| | | | | | | | 5.6 | 52.9 | 5.1 |
| Self Employed | | | 1 | 1 | | 2 | 1 | 1 | 6 |
| | | | 2.9 | 3.8 | 0.0 | 4.1 | 1.9 | 5.9 | 2.5 |
| Electrical And Computers Engineering (EE) | | 83 | 86 | 89 | 92 | 78 | 74 | 44 | 546 |
| EE/ Bio-Medical Engineering | | 10 | 12 | 9 | 11 | 8 | 6 | 6 | 62 |
| Employed | | 8 | 10 | 8 | 11 | 5 | 3 | 1 | 46 |
| | | 80.0 | 83.3 | 88.9 | 100.0 | 62.5 | 50.0 | 16.7 | 74.2 |
| Pursuing HE | | 2 | 1 | | | 2 | 1 | | 6 |
| | | 20.0 | 8.3 | | | 25.0 | 16.7 | | 9.7 |
| Seeking Employment | | | | | | | 2 | 5 | 7 |
| | | | | | | | 33.3 | 83.3 | 11.3 |
| Self Employed | | | 1 | 1 | | 1 | | | 3 |
| | | | 8.3 | 11.1 | | 12.5 | | | 4.8 |
| EE/Computers Engineering | | 14 | 21 | 20 | 27 | 22 | 24 | 2 | 130 |
| Employed | | 13 | 19 | 19 | 24 | 19 | 20 | | 114 |
| | | 92.9 | 90.5 | 95.0 | 88.9 | 86.4 | 83.3 | | 87.7 |
| Pursuing HE | | | 2 | 1 | 1 | 3 | 1 | | 8 |
| | | | 9.5 | 5.0 | 3.7 | 13.6 | 4.2 | | 6.2 |
| Seeking Employment | | | | | | | 1 | 2 | 3 |
| | | | | | | | 4.2 | 100.0 | 2.3 |
| Self Employed | | 1 | | | 2 | | 2 | | 5 |
| | | 7.1 | | | 7.4 | | 8.3 | | 3.8 |
| EE/Electronics and Communication Engineering | | 26 | 29 | 29 | 24 | 24 | 15 | 13 | 160 |
| Employed | | 24 | 25 | 20 | 20 | 20 | 11 | 6 | 126 |
| | | 92.3 | 86.2 | 69.0 | 83.3 | 83.3 | 73.3 | 46.2 | 78.8 |
| Pursuing HE | | 2 | 4 | 7 | 4 | 3 | 2 | | 22 |
| | | 7.7 | 13.8 | 24.1 | 16.7 | 12.5 | 13.3 | | 13.8 |
| Seeking Employment | | | | | | | 1 | 7 | 8 |
| | | | | | | | 6.7 | 53.8 | 5.0 |
| Self Employed | | | | 2 | | 1 | 1 | | 4 |
| | | | | 6.9 | | 4.2 | 6.7 | | 2.5 |

Appendix A – Data Tabulations

Employment Rate by Department/Program of Study and Graduation Year (Cont'ed)

| Dept/Program | Status | 2007-08 | 2008-09 | 2009-10 | 2010-11 | 2011-12 | 2012-13 | 2013-14 | Total |
|---|--------|-----------|-----------|-----------|-----------|-----------|------------|-----------|------------|
| EE/Power and Machine | | 33 | 24 | 31 | 30 | 24 | 29 | 23 | 194 |
| Employed | | 30 | 21 | 28 | 30 | 22 | 27 | 15 | 173 |
| | | 90.9 | 87.5 | 90.3 | 100.0 | 91.7 | 93.1 | 65.2 | 89.2 |
| Pursuing HE | | 2 | 3 | 3 | | 2 | 2 | | 12 |
| | | 6.1 | 12.5 | 9.7 | 0.0 | 8.3 | 6.9 | 0.0 | 6.2 |
| Seeking Employment | | | | | | | | 8 | 8 |
| | | | | | | | | 34.8 | 4.1 |
| Self Employed | | 1 | | | | | | | 1 |
| | | 3.0 | | | | | | | 0.5 |
| Industrial Engineering | | 44 | 66 | 65 | 59 | 64 | 69 | 40 | 407 |
| Employed | | 35 | 45 | 52 | 50 | 52 | 58 | 22 | 314 |
| | | 79.5 | 68.2 | 80.0 | 84.7 | 81.3 | 84.1 | 55.0 | 77.1 |
| Pursuing HE | | 6 | 18 | 11 | 5 | 10 | 4 | 1 | 55 |
| | | 13.6 | 27.3 | 16.9 | 8.5 | 15.6 | 5.8 | 2.5 | 13.5 |
| Seeking Employment | | | | | | | 1 | 12 | 13 |
| | | | | | | | 1.4 | 30.0 | 3.2 |
| Self Employed | | 3 | 3 | 2 | 4 | 2 | 6 | 5 | 25 |
| | | 6.8 | 4.5 | 3.1 | 6.8 | 3.1 | 8.7 | 12.5 | 6.1 |
| Mechanical Engineering (ME) | | 60 | 70 | 67 | 84 | 80 | 104 | 61 | 526 |
| ME/Production Eng. & Mechanical Systems Design | | 47 | 48 | 50 | 59 | 60 | 81 | 42 | 387 |
| Employed | | 45 | 43 | 44 | 55 | 53 | 72 | 26 | 338 |
| | | 95.7 | 89.6 | 88.0 | 93.2 | 88.3 | 88.9 | 61.9 | 87.3 |
| Pursuing HE | | 1 | 4 | 6 | 3 | 5 | 3 | | 22 |
| | | 2.1 | 8.3 | 12.0 | 5.1 | 8.3 | 3.7 | 0.0 | 5.7 |
| Seeking Employment | | | | | | | 3 | 16 | 19 |
| | | | | | | | 3.7 | 38.1 | 4.9 |
| Self Employed | | 1 | 1 | | 1 | 2 | 3 | | 8 |
| | | 2.1 | 2.1 | | 1.7 | 3.3 | 3.7 | | 2.1 |
| ME/Thermal Eng. & Desalination Technology | | 13 | 22 | 17 | 25 | 20 | 23 | 19 | 139 |
| Employed | | 10 | 21 | 15 | 24 | 18 | 19 | 11 | 118 |
| | | 76.9 | 95.5 | 88.2 | 96.0 | 90.0 | 82.6 | 57.9 | 84.9 |
| Pursuing HE | | 2 | 1 | 1 | 1 | 1 | 1 | | 7 |
| | | 15.4 | 4.5 | 5.9 | 4.0 | 5.0 | 4.3 | | 5.0 |
| Seeking Employment | | | | | | | 2 | 8 | 10 |
| | | | | | | | 8.7 | 42.1 | 7.2 |
| Self Employed | | 1 | | 1 | | 1 | 1 | | 4 |
| | | 7.7 | | 5.9 | | 5.0 | 4.3 | | 2.9 |
| Mining Engineering | | 2 | 3 | 4 | 5 | 6 | 11 | 6 | 37 |
| Employed | | 2 | 3 | 4 | 5 | 6 | 10 | 2 | 32 |
| | | 100.0 | 100.0 | 100.0 | 100.0 | 100.0 | 90.9 | 33.3 | 86.5 |
| Seeking Employment | | | | | | | | 4 | 4 |
| | | | | | | | | 66.7 | 10.8 |
| Self Employed | | | | | | | 1 | | 1 |
| | | | | | | | 9.1 | | 2.7 |
| Nuclear Engineering (NE) | | 2 | | 7 | 18 | 13 | 13 | 5 | 58 |
| NE/Medical Physics Engineering | | | | 4 | 11 | 10 | 6 | 5 | 36 |
| Employed | | | | 2 | 10 | 8 | 4 | 2 | 26 |
| | | | | 50.0 | 90.9 | 80.0 | 66.7 | 40.0 | 72.2 |
| Pursuing HE | | | | 2 | 1 | 2 | 2 | | 7 |
| | | | | 50.0 | 9.1 | 20.0 | 33.3 | | 19.4 |
| Seeking Employment | | | | | | | | 2 | 2 |
| | | | | | | | | 40.0 | 5.6 |
| Self Employed | | | | | | | | 1 | 1 |
| | | | | | | | | 20.0 | 2.8 |

Appendix A – Data Tabulations

Employment Rate by Department/Program of Study and Graduation Year (Cont'ed)

| Dept/Program | Status | 2007-08 | 2008-09 | 2009-10 | 2010-11 | 2011-12 | 2012-13 | 2013-14 | Total |
|--|--------|------------|------------|------------|------------|------------|------------|------------|-------------|
| NE/Power Engineering | | 2 | | 1 | | | 4 | | 7 |
| Employed | | 1 | | 1 | | | 2 | | 4 |
| | | 50.0 | | 100.0 | | | 50.0 | | 57.1 |
| Pursuing HE | | | | | | | 1 | | 1 |
| | | | | | | | 25.0 | | 14.3 |
| Seeking Employment | | | | | | | 1 | | 1 |
| | | | | | | | 25.0 | | 14.3 |
| Self Employed | | 1 | | | | | | | 1 |
| | | 50.0 | | | | | | | 14.3 |
| NE/Radiation Protection Engineering | | | | 2 | 7 | 3 | 3 | | 15 |
| Employed | | | | 2 | 6 | 3 | 2 | | 13 |
| | | | | 100.0 | 85.7 | 100.0 | 66.7 | | 86.7 |
| Pursuing HE | | | | | 1 | | | | 1 |
| | | | | | 14.3 | | | | 6.7 |
| Seeking Employment | | | | | | | 1 | | 1 |
| | | | | | | | 33.3 | | 6.7 |
| Total | | 243 | 328 | 310 | 384 | 360 | 384 | 208 | 2217 |

Sector Specific Employment Distribution by Graduation Year

| Sector Type | 2007-08 | 2008-09 | 2009-10 | 2010-11 | 2011-12 | 2012-13 | 2013-14 | Total |
|--------------------------------|-----------------------------|-----------------------------|-----------------------------|-----------------------------|-----------------------------|-----------------------------|-----------------------------|------------------------------|
| Private | 72 32.0% | 98 34.1% | 75 27.1% | 136 37.9% | 160 48.8% | 183 53.4% | 54 46.6% | 72 40.2% |
| Governmental | 104 46.2% | 127 44.3% | 136 49.1% | 156 43.5% | 108 32.9% | 107 31.2% | 46 39.7% | 784 40.5% |
| Academic & Research | 21 9.3% | 39 13.6% | 28 10.1% | 26 7.2% | 21 6.4% | 14 4.1% | 1 0.9% | 150 7.8% |
| Military | 13 5.8% | 12 4.2% | 22 7.9% | 18 5.0% | 5 1.5% | 2 0.6% | 1 0.9% | 73 3.8% |
| Self Employment | 11 4.9% | 7 2.4% | 10 3.6% | 9 2.5% | 11 3.4% | 19 5.5% | 7 6.0% | 74 3.8% |
| Nonprofit Sector | 1 0.4% | 1 0.3% | | 1 0.3% | 1 0.3% | | | 4 0.2% |
| Unknown | 3 1.3% | 3 1.0% | 6 2.2% | 13 3.6% | 22 6.7% | 18 5.2% | 7 6.0% | 72 3.7% |
| Total | 225 100.0% | 287 100.0% | 277 100.0% | 359 100.0% | 328 100.0% | 343 100.0% | 116 100.0% | 1935 100.0% |

Sector Specific Employment Distribution by Graduation Year and Program of Study

| Program/ Sector | 2007-08 | 2008-09 | 2009-10 | 2010-11 | 2011-12 | 2012-13 | 2013-14 | Total |
|--------------------------------|------------|------------|------------|-------------|------------|------------|------------|--------------|
| AE | 8 | 12 | 8 | 15 | 11 | 12 | 6 | 72 |
| Governmental | 4 50.0% | 5 41.7% | 3 37.5% | 1 6.7% | 3 27.3% | 3 25.0% | 2 33.3% | 21 221.4% |
| Private | 1 12.5% | 3 25.0% | 3 37.5% | 10 66.7% | 7 63.6% | 8 66.7% | 4 66.7% | 36 338.6% |
| Academic & Research | 1 12.5% | 4 33.3% | 1 12.5% | 1 6.7% | | | | 7 65.0% |
| Military | 1 12.5% | | 1 12.5% | 2 13.3% | | | | 4 38.3% |
| Self Employment | | | | | 1 9.1% | | | 1 9.1% |
| Unknown | 1 12.5% | | | 1 6.7% | | 1 8.3% | | 3 27.5% |

Appendix A – Data Tabulations

Sector Specific Employment Distribution by Graduation Year and Program of Study

| Program/ Sector | 2007-08 | 2008-09 | 2009-10 | 2010-11 | 2011-12 | 2012-13 | 2013-14 | Total |
|---------------------|-------------|-------------|-------------|-------------|-------------|-------------|-------------|---------------|
| CE | 30 | 49 | 42 | 59 | 58 | 41 | 13 | 292 |
| Governmental | 14 46.7% | 24 49.0% | 17 40.5% | 21 35.6% | 11 19.0% | 5 12.2% | 2 15.4% | 94 218.3% |
| Private | 10 33.3% | 19 38.8% | 12 28.6% | 33 55.9% | 45 77.6% | 30 73.2% | 9 69.2% | 158 376.6% |
| Academic & Research | 2 6.7% | 3 6.1% | 4 9.5% | 1 1.7% | 1 1.7% | | | 11 25.7% |
| Military | 1 3.3% | 2 4.1% | 6 14.3% | 1 1.7% | | | | 10 23.4% |
| Self Employment | 3 10.0% | 1 2.0% | 3 7.1% | 2 3.4% | 1 1.7% | 4 9.8% | | 14 34.1% |
| Unknown | | | | 1 1.7% | | 2 4.9% | 2 15.4% | 5 22.0% |
| CHE | 11 | 34 | 26 | 43 | 46 | 48 | 6 | 214 |
| Governmental | 6 54.5% | 17 50.0% | 15 57.7% | 29 67.4% | 20 43.5% | 21 43.8% | 4 66.7% | 112 383.6% |
| Private | 5 45.5% | 12 35.3% | 8 30.8% | 9 20.9% | 19 41.3% | 25 52.1% | | 78 225.8% |
| Academic & Research | | 1 2.9% | 1 3.8% | 2 4.7% | 2 4.3% | | | 6 15.8% |
| Military | | 3 8.8% | | | 1 2.2% | | | 4 11.0% |
| Self Employment | | 1 2.9% | 1 3.8% | | 2 4.3% | 1 2.1% | 1 16.7% | 6 29.9% |
| Unknown | | | 1 3.8% | 3 7.0% | 2 4.3% | 1 2.1% | 1 16.7% | 8 33.9% |
| EE/Bio | 8 | 11 | 9 | 11 | 6 | 3 | 1 | 49 |
| Governmental | 5 62.5% | 6 54.5% | 4 44.4% | 4 36.4% | 1 16.7% | 2 66.7% | | 22 281.2% |
| Private | 3 37.5% | 1 9.1% | 4 44.4% | 5 45.5% | 2 33.3% | 1 33.3% | 1 100.0% | 17 303.2% |
| Academic & Research | | 3 27.3% | | 2 18.2% | 1 16.7% | | | 6 62.1% |
| Self Employment | | 1 9.1% | 1 11.1% | | 1 16.7% | | | 3 36.9% |
| Unknown | | | | | 1 16.7% | | | 1 16.7% |
| EE/Comp | 14 | 21 | 20 | 27 | 22 | 23 | | 127 |
| Governmental | 6 42.9% | 10 52.6% | 4 21.1% | 10 38.5% | 3 15.8% | 6 27.3% | | 39 32.8% |
| Private | 2 14.3% | 6 31.6% | 4 21.1% | 8 30.8% | 11 57.9% | 11 50.0% | | 42 35.3% |
| Academic & Research | 3 21.4% | 2 10.5% | 4 21.1% | 4 15.4% | 3 15.8% | 2 9.1% | | 18 15.1% |
| Military | 2 14.3% | 1 5.3% | 6 31.6% | 2 7.7% | | 1 4.5% | | 12 10.1% |
| Self Employment | 1 7.1% | | | 2 7.7% | | 2 9.1% | | 5 4.2% |
| Unknown | | | 1 5.3% | | 2 10.5% | | | 3 2.5% |
| EE/Elec | 26 | 29 | 29 | 24 | 24 | 14 | 6 | 152 |
| Governmental | 13 54.2% | 9 36.0% | 8 36.4% | 7 35.0% | 7 33.3% | 2 16.7% | 2 33.3% | 48 36.9% |
| Private | 5 20.8% | 7 28.0% | 3 13.6% | 10 50.0% | 4 19.0% | 4 33.3% | 2 33.3% | 35 26.9% |
| Academic & Research | 4 16.7% | 8 32.0% | 6 27.3% | 1 5.0% | 7 33.3% | 3 25.0% | | 29 22.3% |
| Military | 1 4.2% | | 1 4.5% | 2 10.0% | 1 4.8% | | 1 16.7% | 6 4.6% |
| Self Employment | | | 2 9.1% | | 1 4.8% | 1 8.3% | | 4 3.1% |
| Unknown | 1 4.2% | 1 4.0% | 2 9.1% | | 1 4.8% | 2 16.7% | 1 16.7% | 8 6.2% |

Appendix A – Data Tabulations

Sector Specific Employment Distribution by Graduation Year and Program of Study

| Program/ Sector | 2007-08 | 2008-09 | 2009-10 | 2010-11 | 2011-12 | 2012-13 | 2013-14 | Total |
|--------------------------------|-------------|-------------|-------------|-------------|-------------|-------------|-------------|--------------|
| EE/Pow | 31 | 21 | 28 | 30 | 22 | 27 | 15 | 174 |
| Governmental | 15 48.4% | 16 76.2% | 22 78.6% | 23 76.7% | 15 68.2% | 16 59.3% | 9 60.0% | 116 66.7% |
| Private | 10 32.3% | 1 4.8% | 3 10.7% | 4 13.3% | 5 22.7% | 7 25.9% | 5 33.3% | 35 20.1% |
| Academic & Research | 2 6.5% | 3 14.3% | 1 3.6% | | | 3 11.1% | | 9 5.2% |
| Military | 3 9.7% | 1 4.8% | 2 7.1% | 2 6.7% | | | | 8 4.6% |
| Self Employment | 1 3.2% | | | | | | | 1 0.6% |
| Unknown | | | | 1 3.3% | 2 9.1% | 1 3.7% | 1 6.7% | 5 2.9% |
| IE | 38 | 48 | 54 | 54 | 54 | 64 | 27 | 339 |
| Governmental | 12 31.6% | 25 52.1% | 33 61.1% | 22 40.7% | 18 33.3% | 23 35.9% | 8 29.6% | 141 41.6% |
| Private | 18 47.4% | 15 31.3% | 14 25.9% | 20 37.0% | 28 51.9% | 32 50.0% | 14 51.9% | 141 41.6% |
| Academic & Research | 5 13.2% | 5 10.4% | 3 5.6% | 4 7.4% | 1 1.9% | 1 1.6% | | 19 5.6% |
| Military | | | 2 3.7% | 1 1.9% | | | | 3 0.9% |
| Self Employment | 3 7.9% | 3 6.3% | 2 3.7% | 4 7.4% | 2 3.7% | 6 9.4% | 5 18.5% | 25 7.4% |
| Unknown | | | | 3 5.6% | 5 9.3% | 2 3.1% | | 10 2.9% |
| ME/MENG | 46 | 44 | 44 | 56 | 55 | 75 | 26 | 346 |
| Governmental | 22 47.8% | 11 25.0% | 19 43.2% | 26 46.4% | 27 49.1% | 23 30.7% | 14 53.8% | 142 41.0% |
| Private | 15 32.6% | 17 38.6% | 16 36.4% | 17 30.4% | 16 29.1% | 37 49.3% | 10 38.5% | 128 37.0% |
| Academic & Research | 3 6.5% | 7 15.9% | 5 11.4% | 6 10.7% | 3 5.5% | 3 4.0% | | 27 7.8% |
| Military | 4 8.7% | 5 11.4% | 3 6.8% | 4 7.1% | 1 1.8% | 1 1.3% | | 18 5.2% |
| Self Employment | 1 2.2% | 1 2.3% | | 1 1.8% | 2 3.6% | 3 4.0% | | 8 2.3% |
| Nonprofit Sector | 1 2.2% | 1 2.3% | | | 1 1.8% | | | 3 0.9% |
| Unknown | | 2 4.5% | 1 2.3% | 2 3.6% | 5 9.1% | 8 10.7% | 2 7.7% | 20 5.8% |
| ME/MEP | 11 | 21 | 16 | 24 | 19 | 20 | 11 | 122 |
| Governmental | 6 54.5% | 3 14.3% | 7 43.8% | 6 25.0% | 1 5.3% | 3 15.0% | 5 45.5% | 31 25.4% |
| Private | 2 18.2% | 15 71.4% | 7 43.8% | 11 45.8% | 13 68.4% | 16 80.0% | 5 45.5% | 69 56.6% |
| Academic & Research | | 3 14.3% | 1 6.3% | 2 8.3% | 2 10.5% | | 1 9.1% | 9 7.4% |
| Military | 1 9.1% | | | 4 16.7% | 1 5.3% | | | 6 4.9% |
| Self Employment | 1 9.1% | | 1 6.3% | | 1 5.3% | 1 5.0% | | 4 3.3% |
| Nonprofit Sector | | | | 1 4.2% | | | | 1 0.8% |
| Unknown | 1 9.1% | | | | 1 5.3% | | | 2 1.6% |

Appendix A – Data Tabulations

Sector Specific Employment Distribution by Graduation Year and Program of Study

| Program/ Sector | 2007-08 | 2008-09 | 2009-10 | 2010-11 | 2011-12 | 2012-13 | 2013-14 | Total |
|---------------------|------------|------------|-------------|------------|------------|-------------|-------------|-------------|
| MINE | 2 | 3 | 4 | 5 | 6 | 11 | 2 | 33 |
| Governmental | | 1 33.3% | 3 75.0% | 4 80.0% | 1 16.7% | 2 18.2% | | 11 33.3% |
| Private | 1 50.0% | 2 66.7% | | 1 20.0% | 5 83.3% | 6 54.5% | 2 100.0% | 17 51.5% |
| Academic & Research | 1 50.0% | | | | | 1 9.1% | | 2 6.1% |
| Self Employment | | | | | | 1 9.1% | | 1 3.0% |
| Unknown | | | 1 25.0% | | | 1 9.1% | | 2 6.1% |
| NE/MPh | | | 2 | 10 | 8 | 4 | 3 | 27 |
| Governmental | | | | 1 10.0% | | 1 25.0% | | 2 7.4% |
| Private | | | 1 50.0% | 5 50.0% | 5 62.5% | 2 50.0% | 2 66.7% | 15 55.6% |
| Academic & Research | | | 1 50.0% | 2 20.0% | | 1 25.0% | | 4 14.8% |
| Military | | | | | 1 12.5% | | | 1 3.7% |
| Self Employment | | | | | | | 1 33.3% | 1 3.7% |
| Unknown | | | | 2 20.0% | 2 25.0% | | | 4 14.8% |
| NE/Pow | 2 | | 1 | | | 2 | | 5 |
| Governmental | 1 50.0% | | | | | | | 1 20.0% |
| Private | | | | | | 2 100.0% | | 2 40.0% |
| Academic & Research | | | 1 100.0% | | | | | 1 20.0% |
| Self Employment | 1 50.0% | | | | | | | 1 20.0% |
| NE/RadP | | | 2 | 6 | 3 | 2 | | 13 |
| Governmental | | | 1 50.0% | 2 33.3% | 1 33.3% | | | 4 30.8% |
| Private | | | | 3 50.0% | | 2 100.0% | | 5 38.5% |
| Academic & Research | | | | 1 16.7% | 1 33.3% | | | 2 15.4% |
| Military | | | 1 50.0% | | | | | 1 7.7% |
| Unknown | | | | | 1 33.3% | | | 1 7.7% |

Appendix A – Data Tabulations

Top Employers of Engineering Alumni by Graduation Year

| Institution | 2007-08 | 2008-09 | 2009-10 | 2010-11 | 2011-12 | 2012-13 | 2013-14 | Total |
|--|---------|---------|---------|---------|---------|---------|---------|-------|
| Saudi Electricity Company | 27 | 27 | 33 | 34 | 27 | 24 | 8 | 180 |
| | 12.9% | 9.9% | 12.7% | 10.2% | 9.3% | 8.0% | 7.8% | 10.2% |
| ARAMCO | 22 | 8 | 12 | 19 | 24 | 27 | 11 | 123 |
| | 10.5% | 2.9% | 4.6% | 5.7% | 8.3% | 9.0% | 10.8% | 7.0% |
| SABIC | 8 | 19 | 24 | 30 | 16 | 12 | 11 | 120 |
| | 3.8% | 7.0% | 9.2% | 9.0% | 5.5% | 4.0% | 10.8% | 6.8% |
| Saudi Airlines | 7 | 11 | 12 | 22 | 20 | 18 | 3 | 93 |
| | 3.3% | 4.0% | 4.6% | 6.6% | 6.9% | 6.0% | 2.9% | 5.3% |
| Saudi Binladin Group (SBG) | 6 | 6 | 7 | 27 | 26 | 7 | | 79 |
| | 2.9% | 2.2% | 2.7% | 8.1% | 9.0% | 2.3% | | 4.5% |
| KAU | 10 | 13 | 8 | 16 | 13 | 7 | 1 | 68 |
| | 4.8% | 4.8% | 3.1% | 4.8% | 4.5% | 2.3% | 1.0% | 3.8% |
| Abdul Latif Jameel | 6 | 8 | 7 | 3 | 11 | 13 | 4 | 52 |
| | 2.9% | 2.9% | 2.7% | 0.9% | 3.8% | 4.3% | 3.9% | 2.9% |
| Saline Water Conversion Corporation | 5 | 5 | 15 | 15 | 4 | 5 | | 49 |
| | 2.4% | 1.8% | 5.8% | 4.5% | 1.4% | 1.7% | | 2.8% |
| General Authority of Civil Aviation (GACA) | 9 | 15 | 5 | 6 | 1 | 1 | 4 | 41 |
| | 4.3% | 5.5% | 1.9% | 1.8% | 0.3% | 0.3% | 3.9% | 2.3% |
| KACST | 3 | 15 | 10 | | 6 | 4 | | 38 |
| | 1.4% | 5.5% | 3.8% | | 2.1% | 1.3% | | 2.1% |
| Interior Ministry of Saudi Arabia | 4 | 7 | 12 | 9 | 1 | 1 | | 34 |
| | 1.9% | 2.6% | 4.6% | 2.7% | 0.3% | 0.3% | | 1.9% |
| Ministry of Municipal and Rural Affairs | 10 | 7 | 4 | 4 | 1 | 2 | | 28 |
| | 4.8% | 2.6% | 1.5% | 1.2% | 0.3% | 0.7% | | 1.6% |
| Ministry of Defence and Aviation | 4 | 4 | 7 | 6 | 4 | | 1 | 26 |
| | 1.9% | 1.5% | 2.7% | 1.8% | 1.4% | | 1.0% | 1.5% |
| Dar Al-Handasah | 1 | 9 | 1 | 6 | | 8 | | 25 |
| | 0.5% | 3.3% | 0.4% | 1.8% | | 2.7% | | 1.4% |
| King Abdullah Bin Abdul Aziz AL HARAM Expansion Project | 1 | 3 | 8 | 3 | 3 | 3 | 3 | 24 |
| | 0.5% | 1.1% | 3.1% | 0.9% | 1.0% | 1.0% | 2.9% | 1.4% |
| AlMuhaidib Contracting | 1 | 1 | | 2 | 6 | 11 | | 21 |
| | 0.5% | 0.4% | | 0.6% | 2.1% | 3.7% | | 1.2% |
| Savola | 3 | 4 | | 4 | 5 | 2 | 3 | 21 |
| | 1.4% | 1.5% | | 1.2% | 1.7% | 0.7% | 2.9% | 1.2% |
| National Water Company | 3 | 6 | 3 | 4 | | 5 | | 21 |
| | 1.4% | 2.2% | 1.2% | 1.2% | | 1.7% | | 1.2% |
| Ma'aden | | 4 | 4 | 5 | 2 | 4 | | 19 |
| | | 1.5% | 1.5% | 1.5% | 0.7% | 1.3% | | 1.1% |
| Other institutions | 80 | 101 | 88 | 119 | 119 | 147 | 53 | 707 |
| | 38.1% | 37.0% | 33.8% | 35.6% | 41.2% | 48.8% | 52.0% | 40.0% |

Appendix A – Data Tabulations

When did you start your first work?

| Program | 2007-08 | 2008-09 | 2009-10 | 2010-11 | 2011-12 | 2012-13 | 2013-14 | Total |
|--------------------|-----------|-----------|-----------|-----------|-----------|-----------|-----------|------------|
| AE | 8 | 13 | 8 | 9 | 10 | 11 | 5 | 64 |
| Before graduating | 1 | | | 1 | | 1 | 1 | 4 |
| | 12.5 | | | 11.1 | | 9.1 | 20.0 | 6.3 |
| Within 1st Quarter | 4 | 1 | 2 | 3 | 5 | 4 | 4 | 23 |
| | 50.0 | 7.7 | 25.0 | 33.3 | 50.0 | 36.4 | 80.0 | 35.9 |
| Within 2nd Quarter | | 5 | 2 | 2 | 2 | 1 | | 12 |
| | | 38.5 | 25.0 | 22.2 | 20.0 | 9.1 | | 18.8 |
| Within 3rd Quarter | 1 | 2 | 3 | 2 | 1 | | | 9 |
| | 12.5 | 15.4 | 37.5 | 22.2 | 10.0 | | | 14.1 |
| Within 4th Quarter | | | | 1 | 1 | 2 | | 4 |
| | | | | 11.1 | 10.0 | 18.2 | | 6.3 |
| More than a year | 2 | 5 | 1 | | 1 | 3 | | 12 |
| | 25.0 | 38.5 | 12.5 | | 10.0 | 27.3 | | 18.8 |
| CE | 31 | 49 | 42 | 50 | 50 | 36 | 13 | 271 |
| Before graduating | 3 | 6 | 5 | 8 | 7 | 4 | 1 | 34 |
| | 9.7 | 12.2 | 11.9 | 16.0 | 14.0 | 11.1 | 7.7 | 12.5 |
| Within 1st Quarter | 17 | 24 | 17 | 21 | 25 | 28 | 11 | 143 |
| | 54.8 | 49.0 | 40.5 | 42.0 | 50.0 | 77.8 | 84.6 | 52.8 |
| Within 2nd Quarter | 8 | 12 | 13 | 13 | 14 | 3 | 1 | 64 |
| | 25.8 | 24.5 | 31.0 | 26.0 | 28.0 | 8.3 | 7.7 | 23.6 |
| Within 3rd Quarter | 2 | 5 | 5 | 3 | 2 | 1 | | 18 |
| | 6.5 | 10.2 | 11.9 | 6.0 | 4.0 | 2.8 | | 6.6 |
| Within 4th Quarter | 1 | | | 3 | 2 | | | 6 |
| | 3.2 | | | 6.0 | 4.0 | | | 2.2 |
| More than a year | | 2 | 2 | 2 | | | | 6 |
| | | 4.1 | 4.8 | 4.0 | | | | 2.2 |
| CHE | 11 | 34 | 24 | 36 | 38 | 46 | 5 | 194 |
| Before graduating | 3 | 1 | | 7 | 6 | 2 | 2 | 21 |
| | 27.3 | 2.9 | | 19.4 | 15.8 | 4.3 | 40.0 | 10.8 |
| Within 1st Quarter | 3 | 11 | 5 | 9 | 17 | 24 | 1 | 70 |
| | 27.3 | 32.4 | 20.8 | 25.0 | 44.7 | 52.2 | 20.0 | 36.1 |
| Within 2nd Quarter | 2 | 14 | 11 | 14 | 12 | 12 | 2 | 67 |
| | 18.2 | 41.2 | 45.8 | 38.9 | 31.6 | 26.1 | 40.0 | 34.5 |
| Within 3rd Quarter | 2 | 6 | 5 | 6 | 3 | 3 | | 25 |
| | 18.2 | 17.6 | 20.8 | 16.7 | 7.9 | 6.5 | | 12.9 |
| Within 4th Quarter | | | 3 | | | 3 | | 6 |
| | | | 12.5 | | | 6.5 | | 3.1 |
| More than a year | 1 | 2 | | | | 2 | | 5 |
| | 9.1 | 5.9 | | | | 4.3 | | 2.6 |
| EE | 77 | 76 | 75 | 71 | 55 | 60 | 21 | 435 |
| EE/Bio | 8 | 11 | 9 | 8 | 4 | 3 | 1 | 44 |
| Before graduating | 1 | 1 | | 2 | 2 | 1 | 1 | 8 |
| | 12.5 | 9.1 | 0.0 | 25.0 | 50.0 | 33.3 | 100.0 | 18.2 |
| Within 1st Quarter | 3 | 2 | 5 | 1 | 1 | 1 | | 13 |
| | 37.5 | 18.2 | 55.6 | 12.5 | 25.0 | 33.3 | | 29.5 |
| Within 2nd Quarter | 3 | 3 | 2 | 1 | 1 | | | 10 |
| | 37.5 | 27.3 | 22.2 | 12.5 | 25.0 | | | 22.7 |
| Within 3rd Quarter | 1 | 2 | 2 | 1 | | 1 | | 7 |
| | 12.5 | 18.2 | 22.2 | 12.5 | | 33.3 | | 15.9 |
| Within 4th Quarter | | 2 | | 2 | | | | 4 |
| | | 18.2 | | 25.0 | | | | 9.1 |
| More than a year | | 1 | | 1 | | | | 2 |
| | | 9.1 | | 12.5 | | | | 4.5 |

Appendix A – Data Tabulations

When did you start your first work? (Cont'ed)

| Program | 2007-08 | 2008-09 | 2009-10 | 2010-11 | 2011-12 | 2012-13 | 2013-14 | Total |
|--------------------|-----------|-----------|-----------|-----------|-----------|-----------|-----------|------------|
| EE/Comp | 14 | 19 | 18 | 20 | 15 | 20 | | 106 |
| Before graduating | 1 | | | 6 | 1 | 1 | | 9 |
| | 7.1 | | | 30.0 | 6.7 | 5.0 | | 8.5 |
| Within 1st Quarter | 4 | 4 | 4 | 5 | 4 | 8 | | 29 |
| | 28.6 | 21.1 | 22.2 | 25.0 | 26.7 | 40.0 | | 27.4 |
| Within 2nd Quarter | 4 | 10 | 9 | 2 | 5 | 7 | | 37 |
| | 28.6 | 52.6 | 50.0 | 10.0 | 33.3 | 35.0 | | 34.9 |
| Within 3rd Quarter | 3 | 3 | 3 | 4 | 4 | 4 | | 21 |
| | 21.4 | 15.8 | 16.7 | 20.0 | 26.7 | 20.0 | | 19.8 |
| Within 4th Quarter | | 1 | | 3 | | | | 4 |
| | | 5.3 | | 15.0 | | | | 3.8 |
| More than a year | 2 | 1 | 2 | | 1 | | | 6 |
| | 14.3 | 5.3 | 11.1 | | 6.7 | | | 5.7 |
| EE/Elec | 24 | 25 | 20 | 19 | 18 | 11 | 5 | 122 |
| Before graduating | | 1 | 1 | 1 | 2 | 3 | 3 | 11 |
| | | 4.0 | 5.0 | 5.3 | 11.1 | 27.3 | 60.0 | 9.0 |
| Within 1st Quarter | 6 | 9 | 9 | 6 | 7 | 4 | 1 | 42 |
| | 25.0 | 36.0 | 45.0 | 31.6 | 38.9 | 36.4 | 20.0 | 34.4 |
| Within 2nd Quarter | 9 | 6 | 7 | 9 | 6 | 2 | 1 | 40 |
| | 37.5 | 24.0 | 35.0 | 47.4 | 33.3 | 18.2 | 20.0 | 32.8 |
| Within 3rd Quarter | 6 | 4 | 3 | 1 | 3 | 2 | | 19 |
| | 25.0 | 16.0 | 15.0 | 5.3 | 16.7 | 18.2 | | 15.6 |
| Within 4th Quarter | 2 | 3 | | 1 | | | | 6 |
| | 8.3 | 12.0 | | 5.3 | | | | 4.9 |
| More than a year | 1 | 2 | | 1 | | | | 4 |
| | 4.2 | 8.0 | | 5.3 | | | | 3.3 |
| EE/Pow | 31 | 21 | 28 | 24 | 18 | 26 | 15 | 163 |
| Before graduating | | 1 | 1 | 1 | 2 | 3 | 3 | 11 |
| | | 4.8 | 3.6 | 4.2 | 11.1 | 11.5 | 20.0 | 6.7 |
| Within 1st Quarter | 10 | 12 | 9 | 9 | 11 | 16 | 6 | 73 |
| | 32.3 | 57.1 | 32.1 | 37.5 | 61.1 | 61.5 | 40.0 | 44.8 |
| Within 2nd Quarter | 13 | 3 | 10 | 10 | 6 | 4 | 2 | 48 |
| | 41.9 | 14.3 | 35.7 | 41.7 | 33.3 | 15.4 | 13.3 | 29.4 |
| Within 3rd Quarter | 6 | 4 | 7 | 2 | | 5 | 1 | 25 |
| | 19.4 | 19.0 | 25.0 | 8.3 | | 19.2 | 6.7 | 15.3 |
| Within 4th Quarter | | 1 | 1 | | | | | 2 |
| | | 4.8 | 3.6 | | | | | 1.2 |
| More than a year | 2 | 1 | | 2 | | 1 | | 6 |
| | 6.5 | 4.8 | | 8.3 | | 3.8 | | 3.7 |
| IE | 38 | 51 | 54 | 43 | 46 | 59 | 22 | 313 |
| Before graduating | 8 | 11 | 7 | 11 | 4 | 7 | 6 | 54 |
| | 21.1 | 21.6 | 13.0 | 25.6 | 8.7 | 11.9 | 27.3 | 17.3 |
| Within 1st Quarter | 13 | 13 | 15 | 12 | 14 | 34 | 15 | 116 |
| | 34.2 | 25.5 | 27.8 | 27.9 | 30.4 | 57.6 | 68.2 | 37.1 |
| Within 2nd Quarter | 10 | 17 | 11 | 15 | 19 | 13 | 1 | 86 |
| | 26.3 | 33.3 | 20.4 | 34.9 | 41.3 | 22.0 | 4.5 | 27.5 |
| Within 3rd Quarter | 5 | 9 | 16 | 3 | 7 | 3 | | 43 |
| | 13.2 | 17.6 | 29.6 | 7.0 | 15.2 | 5.1 | | 13.7 |
| Within 4th Quarter | 1 | | 2 | | 1 | 1 | | 5 |
| | 2.6 | | 3.7 | | 2.2 | 1.7 | | 1.6 |
| More than a year | 1 | 1 | 3 | 2 | 1 | 1 | | 9 |
| | 2.6 | 2.0 | 5.6 | 4.7 | 2.2 | 1.7 | | 2.9 |

Appendix A – Data Tabulations

When did you start your first work? (Cont'ed)

| Program | 2007-08 | 2008-09 | 2009-10 | 2010-11 | 2011-12 | 2012-13 | 2013-14 | Total |
|--------------------|---------|---------|---------|---------|---------|---------|---------|-------|
| ME | 58 | 65 | 60 | 75 | 63 | 87 | 36 | 444 |
| ME/MENG | 47 | 43 | 45 | 52 | 49 | 68 | 25 | 329 |
| Before graduating | 8 | 4 | 4 | 7 | 5 | 8 | 12 | 48 |
| | 17.0 | 9.3 | 8.9 | 13.5 | 10.2 | 11.8 | 48.0 | 14.6 |
| Within 1st Quarter | 18 | 16 | 15 | 18 | 17 | 34 | 12 | 130 |
| | 38.3 | 37.2 | 33.3 | 34.6 | 34.7 | 50.0 | 48.0 | 39.5 |
| Within 2nd Quarter | 17 | 15 | 11 | 10 | 18 | 20 | | 91 |
| | 36.2 | 34.9 | 24.4 | 19.2 | 36.7 | 29.4 | | 27.7 |
| Within 3rd Quarter | 3 | 7 | 14 | 13 | 6 | 6 | 1 | 50 |
| | 6.4 | 16.3 | 31.1 | 25.0 | 12.2 | 8.8 | 4.0 | 15.2 |
| Within 4th Quarter | 1 | | | 1 | 2 | | | 4 |
| | 2.1 | | | 1.9 | 4.1 | | | 1.2 |
| More than a year | | 1 | 1 | 3 | 1 | | | 6 |
| | | 2.3 | 2.2 | 5.8 | 2.0 | | | 1.8 |
| ME/MEP | 11 | 22 | 15 | 23 | 14 | 19 | 11 | 115 |
| Before graduating | 1 | | 3 | 1 | | 1 | 4 | 10 |
| | 9.1 | | 20.0 | 4.3 | | 5.3 | 36.4 | 8.7 |
| Within 1st Quarter | 2 | 9 | 3 | 11 | 6 | 9 | 6 | 46 |
| | 18.2 | 40.9 | 20.0 | 47.8 | 42.9 | 47.4 | 54.5 | 40.0 |
| Within 2nd Quarter | 3 | 6 | 6 | 6 | 4 | 6 | | 31 |
| | 27.3 | 27.3 | 40.0 | 26.1 | 28.6 | 31.6 | | 27.0 |
| Within 3rd Quarter | 3 | 3 | 2 | 2 | 4 | 3 | 1 | 18 |
| | 27.3 | 13.6 | 13.3 | 8.7 | 28.6 | 15.8 | 9.1 | 15.7 |
| Within 4th Quarter | 1 | 3 | | 3 | | | | 7 |
| | 9.1 | 13.6 | | 13.0 | | | | 6.1 |
| More than a year | 1 | 1 | 1 | | | | | 3 |
| | 9.1 | 4.5 | 6.7 | | | | | 2.6 |
| MINE | 2 | 3 | 3 | 4 | 6 | 9 | 2 | 29 |
| Before graduating | 1 | | | | 2 | 1 | 1 | 5 |
| | 50.0 | | | | 33.3 | 11.1 | 50.0 | 17.2 |
| Within 1st Quarter | | 1 | 3 | 1 | 2 | 4 | 1 | 12 |
| | | 33.3 | 100.0 | 25.0 | 33.3 | 44.4 | 50.0 | 41.4 |
| Within 2nd Quarter | | | | 2 | 1 | 2 | | 5 |
| | | 0.0 | | 50.0 | 16.7 | 22.2 | | 17.2 |
| Within 3rd Quarter | | 2 | | 1 | | | | 3 |
| | | 66.7 | | 25.0 | | | | 10.3 |
| Within 4th Quarter | | | | | 1 | 1 | | 2 |
| | | | | | 16.7 | 11.1 | | 6.9 |
| More than a year | 1 | | | | | 1 | | 2 |
| | 50.0 | | | | | 11.1 | | 6.9 |
| NE | 2 | | 5 | 9 | 8 | 8 | 2 | 34 |
| Before graduating | | | | 1 | 1 | 2 | 2 | 6 |
| | | | | 11.1 | 12.5 | 25.0 | 100.0 | 17.6 |
| Within 1st Quarter | | | 2 | 2 | | | | 4 |
| | | | 40.0 | 22.2 | | | | 11.8 |
| Within 2nd Quarter | 1 | | 1 | 1 | | 4 | | 7 |
| | 50.0 | | 20.0 | 11.1 | | 50.0 | | 20.6 |
| Within 3rd Quarter | | | 1 | 2 | 3 | | | 6 |
| | | | 20.0 | 22.2 | 37.5 | | | 17.6 |
| Within 4th Quarter | | | | 1 | | | | 1 |
| | | | | 11.1 | | | | 2.9 |
| More than a year | 1 | | 1 | 2 | 4 | 2 | | 10 |
| | 50.0 | | 20.0 | 22.2 | 50.0 | 25.0 | | 29.4 |
| Total | 227 | 291 | 271 | 297 | 276 | 316 | 106 | 1784 |

Appendix A – Data Tabulations

Was your first work related to your area of study?

| | Graduation Year | | | | | | | Total |
|-------------|-----------------|---------|---------|---------|---------|---------|---------|-------|
| | 2007-08 | 2008-09 | 2009-10 | 2010-11 | 2011-12 | 2012-13 | 2012-14 | |
| Related | 182 | 198 | 147 | 133 | 202 | 273 | 100 | 1235 |
| | 83.5% | 78.6% | 81.2% | 80.1% | 77.4% | 85.6% | 89.3% | 81.8% |
| Not Related | 36 | 54 | 34 | 33 | 59 | 46 | 12 | 274 |
| | 16.5% | 21.4% | 18.8% | 19.9% | 22.6% | 14.4% | 10.7% | 18.2% |
| Total | 218 | 252 | 181 | 166 | 261 | 319 | 112 | 1509 |
| | 100% | 100% | 100% | 100% | 100% | 100% | 100% | 100% |

Was your first work related to your area of study?

| | 2007-08 | 2008-09 | 2009-10 | 2010-11 | 2011-12 | 2012-13 | 2013-14 | Total |
|---|-----------|-----------|-----------|-----------|-----------|-----------|-----------|------------|
| Aeronautical Engineering | 8 | 13 | 7 | 7 | 9 | 11 | 6 | 61 |
| Related | 6 | 8 | 4 | 3 | 7 | 10 | 5 | 43 |
| | 75.0% | 61.5% | 57.1% | 42.9% | 77.8% | 90.9% | 83.3% | 70.5% |
| Not Related | 2 | 5 | 3 | 4 | 2 | 1 | 1 | 18 |
| | 25.0% | 38.5% | 42.9% | 57.1% | 22.2% | 9.1% | 16.7% | 29.5% |
| Civil Engineering | 30 | 50 | 18 | 26 | 46 | 37 | 13 | 220 |
| Related | 26 | 41 | 15 | 24 | 42 | 36 | 12 | 196 |
| | 86.7% | 82.0% | 83.3% | 92.3% | 91.3% | 97.3% | 92.3% | 89.1% |
| Not Related | 4 | 9 | 3 | 2 | 4 | 1 | 1 | 24 |
| | 13.3% | 18.0% | 16.7% | 7.7% | 8.7% | 2.7% | 7.7% | 10.9% |
| Chemical Engineering | 11 | 28 | 12 | 20 | 35 | 46 | 5 | 157 |
| Related | 10 | 20 | 10 | 14 | 23 | 38 | 4 | 119 |
| | 90.9% | 71.4% | 83.3% | 70.0% | 65.7% | 82.6% | 80.0% | 75.8% |
| Not Related | 1 | 8 | 2 | 6 | 12 | 8 | 1 | 38 |
| | 9.1% | 28.6% | 16.7% | 30.0% | 34.3% | 17.4% | 20.0% | 24.2% |
| EE/Biomedical Engineering | 7 | 9 | 3 | 4 | 5 | 3 | 1 | 32 |
| Related | 5 | 7 | 3 | 4 | 5 | 2 | 1 | 27 |
| | 71.4% | 77.8% | 100.0% | 100.0% | 100.0% | 66.7% | 100.0% | 84.4% |
| Not Related | 2 | 2 | | | | 1 | | 5 |
| | 28.6% | 22.2% | | | | 33.3% | | 15.6% |
| EE/Computers Engineering | 14 | 17 | 14 | 10 | 14 | 21 | | 90 |
| Related | 12 | 13 | 13 | 7 | 10 | 19 | | 74 |
| | 85.7% | 76.5% | 92.9% | 70.0% | 71.4% | 90.5% | | 82.2% |
| Not Related | 2 | 4 | 1 | 3 | 4 | 2 | | 16 |
| | 14.3% | 23.5% | 7.1% | 30.0% | 28.6% | 9.5% | | 17.8% |
| EE/Electronics & Comm. Engineering | 22 | 17 | 16 | 18 | 20 | 10 | 6 | 109 |
| Related | 17 | 12 | 12 | 14 | 12 | 8 | 6 | 81 |
| | 77.3% | 70.6% | 75.0% | 77.8% | 60.0% | 80.0% | 100.0% | 74.3% |
| Not Related | 5 | 5 | 4 | 4 | 8 | 2 | | 28 |
| | 22.7% | 29.4% | 25.0% | 22.2% | 40.0% | 20.0% | | 25.7% |
| EE/Power & Machine Engineering | 31 | 16 | 23 | 15 | 17 | 26 | 15 | 143 |
| Related | 26 | 14 | 21 | 14 | 16 | 25 | 14 | 130 |
| | 83.9% | 87.5% | 91.3% | 93.3% | 94.1% | 96.2% | 93.3% | 90.9% |
| Not Related | 5 | 2 | 2 | 1 | 1 | 1 | 1 | 13 |
| | 16.1% | 12.5% | 8.7% | 6.7% | 5.9% | 3.8% | 6.7% | 9.1% |
| Industrial Engineering | 38 | 47 | 48 | 18 | 46 | 59 | 24 | 280 |
| Related | 33 | 37 | 36 | 17 | 37 | 50 | 22 | 232 |
| | 86.8% | 78.7% | 75.0% | 94.4% | 80.4% | 84.7% | 91.7% | 82.9% |
| Not Related | 5 | 10 | 12 | 1 | 9 | 9 | 2 | 48 |
| | 13.2% | 21.3% | 25.0% | 5.6% | 19.6% | 15.3% | 8.3% | 17.1% |

Appendix A – Data Tabulations

Was your first work related to your area of study? (Cont'ed)

| | 2007-08 | 2008-09 | 2009-10 | 2010-11 | 2011-12 | 2012-13 | 2013-14 | Total |
|---|--------------|-------------|-------------|-------------|-------------|-------------|-------------|----------------------------|
| ME/Production Eng. & Mechanical Systems Design | 43 | 34 | 30 | 22 | 46 | 69 | 26 | 270 |
| Related | 33 76.7% | 30 88.2% | 25 83.3% | 17 77.3% | 34 73.9% | 56 81.2% | 24 92.3% | 219 81.1% |
| Not Related | 10 23.3% | 4 11.8% | 5 16.7% | 5 22.7% | 12 26.1% | 13 18.8% | 2 7.7% | 51 18.9% |
| ME/Thermal Eng. & Desalination Technology | 10 | 18 | 5 | 15 | 10 | 20 | 11 | 89 |
| Related | 10 100.0% | 14 77.8% | 3 60.0% | 10 66.7% | 7 70.0% | 16 80.0% | 10 90.9% | 70 78.7% |
| Not Related | | 4 22.2% | 2 40.0% | 5 33.3% | 3 30.0% | 4 20.0% | 1 9.1% | 19 21.3% |
| Mining Engineering | 2 | 3 | 3 | 5 | 5 | 9 | 2 | 29 |
| Related | 2 100.0% | 2 66.7% | 3 100.0% | 5 100.0% | 4 80.0% | 6 66.7% | 1 50.0% | 23 79.3% |
| Not Related | | 1 33.3% | | | 1 20.0% | 3 33.3% | 1 50.0% | 6 20.7% |
| NE/Medical Physics Engineering | | | 1 | 3 | 6 | 4 | 3 | 17 |
| Related | | | 1 100.0% | 3 100.0% | 3 50.0% | 3 75.0% | 1 33.3% | 11 64.7% |
| Not Related | | | | | 3 50.0% | 1 25.0% | 2 66.7% | 6 35.3% |
| NE/Nuclear Power Engineering | 2 | | | | | 2 | | 4 |
| Related | 2 100.0% | | | | | 2 100.0% | | 4 100.0% |
| NE/Radiation Protection Engineering | | | 1 | 3 | 2 | 2 | | 8 |
| Related | | | 1 100.0% | 1 33.3% | 2 100.0% | 2 100.0% | | 6 75.0% |
| Not Related | | | | 2 66.7% | | | | 2 25.0% |

Starting Salaries by Graduation Year

| Starting Salaries | Graduation Year | | | | | | | Total |
|-----------------------------|---------------------|----------------------|---------------------|----------------------|----------------------|----------------------|----------------------|----------------------------|
| | 2007-08 | 2008-09 | 2009-10 | 2010-11 | 2011-12 | 2012-13 | 2013-14 | |
| Less than 7,500 SR | 31 33.3% | 43 35.2% | 13 18.8% | 27 24.8% | 28 13.7% | 49 15.9% | 4 3.9% | 195 19.4% |
| (7,500 – 10,000) SR | 42 45.2% | 48 39.3% | 22 31.9% | 49 45.0% | 109 53.4% | 138 44.8% | 39 38.2% | 447 44.4% |
| (10,000 – 15,000) SR | 20 21.5% | 31 25.4% | 34 49.3% | 33 30.3% | 66 32.4% | 118 38.3% | 55 53.9% | 357 35.5% |
| More than 15,000 SR | | | | | 1 0.5% | 3 1.0% | 4 3.9% | 8 0.8% |
| Total | 93 100.0% | 122 100.0% | 69 100.0% | 109 100.0% | 204 100.0% | 308 100.0% | 102 100.0% | 1007 100.0% |

Appendix A – Data Tabulations

Starting Salaries by Department and Graduation Year

| | 2007-08 | 2008-09 | 2009-10 | 2010-11 | 2011-12 | 2012-13 | 2013-14 | Total |
|----------------------|-----------|-----------|----------|-----------|-----------|-----------|-----------|------------|
| AE | 2 | 9 | 1 | 3 | 8 | 11 | 6 | 40 |
| Less than 7,500 SR | | 3 | | 1 | | | | 4 |
| | | 33.3% | | 33.3% | | | | 10.0% |
| (7,500 – 10,000) SR | 2 | 5 | 1 | 2 | 5 | 5 | 3 | 23 |
| | 100.0% | 55.6% | 100.0% | 66.7% | 62.5% | 45.5% | 50.0% | 57.5% |
| (10,000 – 15,000) SR | | 1 | | | 3 | 6 | 3 | 13 |
| | | 11.1% | | | 37.5% | 54.5% | 50.0% | 32.5% |
| CE | 13 | 21 | 6 | 17 | 34 | 35 | 11 | 137 |
| Less than 7,500 SR | 9 | 9 | 3 | 5 | 6 | 11 | 2 | 45 |
| | 69.2% | 42.9% | 50.0% | 29.4% | 17.6% | 31.4% | 18.2% | 32.8% |
| (7,500 – 10,000) SR | 4 | 6 | | 8 | 25 | 18 | 6 | 67 |
| | 30.8% | 28.6% | | 47.1% | 73.5% | 51.4% | 54.5% | 48.9% |
| (10,000 – 15,000) SR | | 6 | 3 | 4 | 3 | 6 | 3 | 25 |
| | | 28.6% | 50.0% | 23.5% | 8.8% | 17.1% | 27.3% | 18.2% |
| CHE | 8 | 12 | 7 | 16 | 26 | 46 | 4 | 119 |
| Less than 7,500 SR | 4 | 6 | 1 | 3 | 1 | 6 | | 21 |
| | 50.0% | 50.0% | 14.3% | 18.8% | 3.8% | 13.0% | | 17.6% |
| (7,500 – 10,000) SR | 4 | 3 | 3 | 8 | 16 | 13 | 1 | 48 |
| | 50.0% | 25.0% | 42.9% | 50.0% | 61.5% | 28.3% | 25.0% | 40.3% |
| (10,000 – 15,000) SR | | 3 | 3 | 5 | 9 | 26 | 3 | 49 |
| | | 25.0% | 42.9% | 31.3% | 34.6% | 56.5% | 75.0% | 41.2% |
| More than 15,000 SR | | | | | | 1 | | 1 |
| | | | | | | 2.2% | | 0.8% |
| EE/Bio | 3 | 4 | 3 | 4 | 2 | 3 | 1 | 20 |
| Less than 7,500 SR | | | | | | 1 | | 1 |
| | | | | | | 33.3% | | 5.0% |
| (7,500 – 10,000) SR | | 2 | 3 | 4 | | 1 | 1 | 11 |
| | | 50.0% | 100.0% | 100.0% | | 33.3% | 100.0% | 55.0% |
| (10,000 – 15,000) SR | 3 | 2 | | | 2 | 1 | | 8 |
| | 100.0% | 50.0% | | | 100.0% | 33.3% | | 40.0% |
| EE/Comp | 5 | 4 | 6 | 6 | 10 | 20 | | 51 |
| Less than 7,500 SR | 1 | 3 | 1 | 4 | 1 | 4 | | 14 |
| | 20.0% | 75.0% | 16.7% | 66.7% | 10.0% | 20.0% | | 27.5% |
| (7,500 – 10,000) SR | 3 | 1 | 3 | 2 | 7 | 10 | | 26 |
| | 60.0% | 25.0% | 50.0% | 33.3% | 70.0% | 50.0% | | 51.0% |
| (10,000 – 15,000) SR | 1 | | 2 | | 2 | 5 | | 10 |
| | 20.0% | | 33.3% | | 20.0% | 25.0% | | 19.6% |
| More than 15,000 SR | | | | | | 1 | | 1 |
| | | | | | | 5.0% | | 2.0% |
| EE/Elec | 15 | 9 | 2 | 10 | 14 | 10 | 5 | 65 |
| Less than 7,500 SR | 1 | 3 | 1 | 1 | 5 | | | 11 |
| | 6.7% | 33.3% | 50.0% | 10.0% | 35.7% | | | 16.9% |
| (7,500 – 10,000) SR | 7 | 3 | | 6 | 4 | 2 | | 22 |
| | 46.7% | 33.3% | | 60.0% | 28.6% | 20.0% | | 33.8% |
| (10,000 – 15,000) SR | 7 | 3 | 1 | 3 | 5 | 7 | 5 | 31 |
| | 46.7% | 33.3% | 50.0% | 30.0% | 35.7% | 70.0% | 100.0% | 47.7% |
| More than 15,000 SR | | | | | | 1 | | 1 |
| | | | | | | 10.0% | | 1.5% |
| EE/Pow | 10 | 9 | 7 | 9 | 13 | 26 | 14 | 88 |
| Less than 7,500 SR | 1 | 1 | | 1 | 1 | 3 | 1 | 8 |
| | 10.0% | 11.1% | | 11.1% | 7.7% | 11.5% | 7.1% | 9.1% |
| (7,500 – 10,000) SR | 6 | 4 | 1 | 3 | 7 | 12 | 1 | 34 |
| | 60.0% | 44.4% | 14.3% | 33.3% | 53.8% | 46.2% | 7.1% | 38.6% |
| (10,000 – 15,000) SR | 3 | 4 | 6 | 5 | 5 | 11 | 12 | 46 |
| | 30.0% | 44.4% | 85.7% | 55.6% | 38.5% | 42.3% | 85.7% | 52.3% |

Appendix A – Data Tabulations

Starting Salaries by Department and Graduation Year (Cont'd)

| | 2007-08 | 2008-09 | 2009-10 | 2010-11 | 2011-12 | 2012-13 | 2013-14 | Total |
|----------------------|-----------|-----------|-----------|-----------|-----------|-----------|-----------|------------|
| IE | 16 | 21 | 19 | 12 | 41 | 57 | 22 | 188 |
| Less than 7,500 SR | 6 | 6 | 2 | 2 | 4 | 6 | | 26 |
| | 37.5% | 28.6% | 10.5% | 16.7% | 9.8% | 10.5% | | 13.8% |
| (7,500 – 10,000) SR | 8 | 11 | 5 | 4 | 18 | 31 | 11 | 88 |
| | 50.0% | 52.4% | 26.3% | 33.3% | 43.9% | 54.4% | 50.0% | 46.8% |
| (10,000 – 15,000) SR | 2 | 4 | 12 | 6 | 18 | 20 | 11 | 73 |
| | 12.5% | 19.0% | 63.2% | 50.0% | 43.9% | 35.1% | 50.0% | 38.8% |
| More than 15,000 SR | | | | | 1 | | | 1 |
| | | | | | 2.4% | | | 0.5% |
| ME/MENG | 16 | 20 | 11 | 14 | 35 | 65 | 24 | 185 |
| Less than 7,500 SR | 7 | 5 | 3 | 5 | 7 | 9 | | 36 |
| | 43.8% | 25.0% | 27.3% | 35.7% | 20.0% | 13.8% | | 19.5% |
| (7,500 – 10,000) SR | 7 | 9 | 4 | 4 | 16 | 27 | 7 | 74 |
| | 43.8% | 45.0% | 36.4% | 28.6% | 45.7% | 41.5% | 29.2% | 40.0% |
| (10,000 – 15,000) SR | 2 | 6 | 4 | 5 | 12 | 29 | 14 | 72 |
| | 12.5% | 30.0% | 36.4% | 35.7% | 34.3% | 44.6% | 58.3% | 38.9% |
| More than 15,000 SR | | | | | | | 3 | 3 |
| | | | | | | | 12.5% | 1.6% |
| ME/MEP | 4 | 11 | 4 | 9 | 10 | 18 | 11 | 67 |
| Less than 7,500 SR | 2 | 6 | | 1 | | 4 | | 13 |
| | 50.0% | 54.5% | | 11.1% | | 22.2% | | 19.4% |
| (7,500 – 10,000) SR | 1 | 3 | 2 | 6 | 7 | 12 | 7 | 38 |
| | 25.0% | 27.3% | 50.0% | 66.7% | 70.0% | 66.7% | 63.6% | 56.7% |
| (10,000 – 15,000) SR | 1 | 2 | 2 | 2 | 3 | 2 | 3 | 15 |
| | 25.0% | 18.2% | 50.0% | 22.2% | 30.0% | 11.1% | 27.3% | 22.4% |
| More than 15,000 SR | | | | | | | 1 | 1 |
| | | | | | | | 9.1% | 1.5% |
| MINE | 1 | 2 | 2 | 3 | 4 | 9 | 2 | 23 |
| Less than 7,500 SR | | 1 | 1 | | 1 | 2 | | 5 |
| | | 50.0% | 50.0% | | 25.0% | 22.2% | | 21.7% |
| (7,500 – 10,000) SR | | 1 | | | 2 | 3 | 1 | 7 |
| | | 50.0% | | | 50.0% | 33.3% | 50.0% | 30.4% |
| (10,000 – 15,000) SR | 1 | | 1 | 3 | 1 | 4 | 1 | 11 |
| | 100.0% | | 50.0% | 100.0% | 25.0% | 44.4% | 50.0% | 47.8% |
| NE/MPh | | | | 3 | 5 | 4 | 2 | 14 |
| Less than 7,500 SR | | | | 2 | 2 | 2 | 1 | 7 |
| | | | | 66.7% | 40.0% | 50.0% | 50.0% | 50.0% |
| (7,500 – 10,000) SR | | | | 1 | 1 | 1 | 1 | 4 |
| | | | | 33.3% | 20.0% | 25.0% | 50.0% | 28.6% |
| (10,000 – 15,000) SR | | | | | 2 | 1 | | 3 |
| | | | | | 40.0% | 25.0% | | 21.4% |
| NE/Pow | | | | | | 2 | | 2 |
| (7,500 – 10,000) SR | | | | | | 2 | | 2 |
| | | | | | | 100.0% | | 100.0% |
| NE/RadP | | | 1 | 3 | 2 | 2 | | 8 |
| Less than 7,500 SR | | | 1 | 2 | | 1 | | 4 |
| | | | 100.0% | 66.7% | | 50.0% | | 50.0% |
| (7,500 – 10,000) SR | | | | 1 | 1 | 1 | | 3 |
| | | | | 33.3% | 50.0% | 50.0% | | 37.5% |
| (10,000 – 15,000) SR | | | | | 1 | | | 1 |
| | | | | | 50.0% | | | 12.5% |

Appendix A – Data Tabulations

The Effect of GPA on the Time of Getting a Job

| | Grade | | | | Total |
|-----------------------------------|--------------------|--------------------|--------------------|--------------------|---------------------|
| | A | B | C | D | |
| Before graduating | 27 18.6% | 71 12.2% | 82 9.9% | 29 15.8% | 209 12.0% |
| Within 1st Quarter | 68 46.9% | 242 41.5% | 305 36.9% | 75 41.0% | 690 39.7% |
| Within 2nd Quarter | 29 20.0% | 159 27.3% | 250 30.2% | 47 25.7% | 485 27.9% |
| Within 3rd Quarter | 12 8.3% | 83 14.2% | 123 14.9% | 18 9.8% | 236 13.6% |
| Within 4th Quarter | 3 2.1% | 13 2.2% | 28 3.4% | 5 2.7% | 49 2.8% |
| More than a year after graduating | 6 4.1% | 15 2.6% | 39 4.7% | 9 4.9% | 69 4.0% |
| Total | 145 100% | 583 100% | 827 100% | 183 100% | 1738 100% |

The Effect of GPA on the Starting Salary

| Starting Salaries | Grade | | | | Total |
|----------------------|---------------------|----------------------|----------------------|----------------------|-----------------------|
| | A | B | C | D | |
| Less than 7,500 SR | 10 11.4% | 40 11.4% | 103 22.7% | 42 37.2% | 195 19.4% |
| (7,500 – 10,000) SR | 22 25.0% | 145 41.2% | 237 52.2% | 43 38.1% | 447 44.4% |
| (10,000 – 15,000) SR | 55 62.5% | 162 46.0% | 113 24.9% | 27 23.9% | 357 35.5% |
| More than 15,000 SR | 1 1.1% | 5 1.4% | 1 0.2% | 1 0.9% | 8 0.8% |
| Total | 88 100.0% | 352 100.0% | 454 100.0% | 113 100.0% | 1007 100.0% |

The Effect of GPA on the Time of Getting a Job (by Academic Year)

| Academic Year Waiting Period | Grade | | | | Total |
|-----------------------------------|------------|-------------|-------------|-------------|-------------|
| | A | B | C | D | |
| A.Y. 2007-2008 | 7 | 62 | 118 | 27 | 214 |
| Before graduating | | 8 12.9% | 12 10.2% | 5 18.5% | 25 11.7% |
| Within 1st Quarter | 2 28.6% | 24 38.7% | 38 32.2% | 12 44.4% | 76 35.5% |
| Within 2nd Quarter | 2 28.6% | 16 25.8% | 42 35.6% | 6 22.2% | 66 30.8% |
| Within 3rd Quarter | 1 14.3% | 12 19.4% | 15 12.7% | 2 7.4% | 30 14.0% |
| Within 4th Quarter | 1 14.3% | | 4 3.4% | | 5 2.3% |
| More than a year after graduating | 1 14.3% | 2 3.2% | 7 5.9% | 2 7.4% | 12 5.6% |

Appendix A – Data Tabulations

The Effect of GPA on the Time of Getting a Job (by Academic Year) – Cont'd

| Academic Year Waiting Period | Grade | | | | Total |
|-----------------------------------|-------------|-------------|-------------|-------------|-------------|
| | A | B | C | D | |
| A.Y. 2008-2009 | 21 | 74 | 130 | 50 | 275 |
| Before graduating | 3 14.3% | 5 6.8% | 10 7.7% | 5 10.0% | 23 8.4% |
| Within 1st Quarter | 7 33.3% | 25 33.8% | 44 33.8% | 20 40.0% | 96 34.9% |
| Within 2nd Quarter | 5 23.8% | 26 35.1% | 38 29.2% | 15 30.0% | 84 30.5% |
| Within 3rd Quarter | 4 19.0% | 12 16.2% | 24 18.5% | 5 10.0% | 45 16.4% |
| Within 4th Quarter | 1 4.8% | 2 2.7% | 6 4.6% | 1 2.0% | 10 3.6% |
| More than a year after graduating | 1 4.8% | 4 5.4% | 8 6.2% | 4 8.0% | 17 6.2% |
| A.Y. 2009-2010 | 21 | 83 | 137 | 22 | 263 |
| Before graduating | 1 4.8% | 6 7.2% | 13 9.5% | 1 4.5% | 21 8.0% |
| Within 1st Quarter | 11 52.4% | 27 32.5% | 40 29.2% | 9 40.9% | 87 33.1% |
| Within 2nd Quarter | 5 23.8% | 23 27.7% | 45 32.8% | 9 40.9% | 82 31.2% |
| Within 3rd Quarter | 3 14.3% | 23 27.7% | 29 21.2% | 3 13.6% | 58 22.1% |
| Within 4th Quarter | 1 4.8% | 2 2.4% | 3 2.2% | | 6 2.3% |
| More than a year after graduating | | 2 2.4% | 7 5.1% | | 9 3.4% |
| A.Y. 2010-2011 | 29 | 108 | 133 | 17 | 287 |
| Before graduating | 8 27.6% | 14 13.0% | 12 9.0% | 5 29.4% | 39 13.6% |
| Within 1st Quarter | 9 31.0% | 41 38.0% | 45 33.8% | 3 17.6% | 98 34.1% |
| Within 2nd Quarter | 6 20.7% | 35 32.4% | 39 29.3% | 4 23.5% | 84 29.3% |
| Within 3rd Quarter | 3 10.3% | 10 9.3% | 24 18.0% | 2 11.8% | 39 13.6% |
| Within 4th Quarter | | 5 4.6% | 7 5.3% | 2 11.8% | 14 4.9% |
| More than a year after graduating | 3 10.3% | 3 2.8% | 6 4.5% | 1 5.9% | 13 4.5% |

Appendix A – Data Tabulations

The Effect of GPA on the Time of Getting a Job (by Academic Year) – Cont'd

| Academic Year Waiting Period | Grade | | | | Total |
|---|-------------|-------------|-------------|-------------|--------------|
| | A | B | C | D | |
| A.Y. 2011-2012 | 29 | 95 | 124 | 28 | 276 |
| Before graduating | 6 20.7% | 12 12.6% | 8 6.5% | 5 17.9% | 31 11.2% |
| Within 1st Quarter | 16 55.2% | 33 34.7% | 51 41.1% | 9 32.1% | 109 39.5% |
| Within 2nd Quarter | 6 20.7% | 34 35.8% | 41 33.1% | 7 25.0% | 88 31.9% |
| Within 3rd Quarter | 1 3.4% | 12 12.6% | 16 12.9% | 4 14.3% | 33 12.0% |
| Within 4th Quarter | | 2 2.1% | 3 2.4% | 2 7.1% | 7 2.5% |
| More than a year after graduating | | 2 2.1% | 5 4.0% | 1 3.6% | 8 2.9% |
| A.Y. 2012-2013 | 21 | 115 | 150 | 30 | 316 |
| Before graduating | 2 9.5% | 9 7.8% | 14 9.3% | 6 20.0% | 31 9.8% |
| Within 1st Quarter | 15 71.4% | 67 58.3% | 69 46.0% | 15 50.0% | 166 52.5% |
| Within 2nd Quarter | 3 14.3% | 23 20.0% | 42 28.0% | 6 20.0% | 74 23.4% |
| Within 3rd Quarter | | 12 10.4% | 14 9.3% | 2 6.7% | 28 8.9% |
| Within 4th Quarter | | 2 1.7% | 5 3.3% | | 7 2.2% |
| More than a year after graduating | 1 4.8% | 2 1.7% | 6 4.0% | 1 3.3% | 10 3.2% |
| A.Y. 2013-2014 (Fall & Spring) | 17 | 46 | 35 | 9 | 107 |
| Before graduating | 7 41.2% | 17 37.0% | 13 37.1% | 2 22.2% | 39 36.4% |
| Within 1st Quarter | 8 47.1% | 25 54.3% | 18 51.4% | 7 77.8% | 58 54.2% |
| Within 2nd Quarter | 2 11.8% | 2 4.3% | 3 8.6% | | 7 6.5% |
| Within 3rd Quarter | | 2 4.3% | 1 2.9% | | 3 2.8% |

Appendix A – Data Tabulations

The Effect of GPA on the Starting Salary by Academic Year

| Academic Year Starting Salary | Grade | | | | Total |
|----------------------------------|-----------|------------|------------|-----------|------------|
| | A | B | C | D | |
| A.Y. 2007-2008 | 2 | 35 | 46 | 10 | 93 |
| Less than 7,500 SR | | 6 | 20 | 5 | 31 |
| | | 17.1% | 43.5% | 50.0% | 33.3% |
| (7,500 – 10,000) SR | 1 | 15 | 21 | 5 | 42 |
| | 50.0% | 42.9% | 45.7% | 50.0% | 45.2% |
| (10,000 – 15,000) SR | 1 | 14 | 5 | | 20 |
| | 50.0% | 40.0% | 10.9% | | 21.5% |
| A.Y. 2008-2009 | 9 | 32 | 53 | 28 | 122 |
| Less than 7,500 SR | 1 | 5 | 21 | 16 | 43 |
| | 11.1% | 15.6% | 39.6% | 57.1% | 35.2% |
| (7,500 – 10,000) SR | 5 | 17 | 19 | 7 | 48 |
| | 55.6% | 53.1% | 35.8% | 25.0% | 39.3% |
| (10,000 – 15,000) SR | 3 | 10 | 13 | 5 | 31 |
| | 33.3% | 31.3% | 24.5% | 17.9% | 25.4% |
| A.Y. 2009-2010 | 9 | 22 | 31 | 7 | 69 |
| Less than 7,500 SR | | 5 | 6 | 2 | 13 |
| | | 22.7% | 19.4% | 28.6% | 18.8% |
| (7,500 – 10,000) SR | | 5 | 12 | 5 | 22 |
| | | 22.7% | 38.7% | 71.4% | 31.9% |
| (10,000 – 15,000) SR | 9 | 12 | 13 | | 34 |
| | 100.0% | 54.5% | 41.9% | | 49.3% |
| A.Y. 2010-2011 | 10 | 38 | 51 | 10 | 109 |
| Less than 7,500 SR | | 8 | 15 | 4 | 27 |
| | | 21.1% | 29.4% | 40.0% | 24.8% |
| (7,500 – 10,000) SR | 5 | 13 | 27 | 4 | 49 |
| | 50.0% | 34.2% | 52.9% | 40.0% | 45.0% |
| (10,000 – 15,000) SR | 5 | 17 | 9 | 2 | 33 |
| | 50.0% | 44.7% | 17.6% | 20.0% | 30.3% |
| A.Y. 2011-2012 | 21 | 70 | 92 | 21 | 204 |
| Less than 7,500 SR | 5 | 7 | 11 | 5 | 28 |
| | 23.8% | 10.0% | 12.0% | 23.8% | 13.7% |
| (7,500 – 10,000) SR | 5 | 37 | 59 | 8 | 109 |
| | 23.8% | 52.9% | 64.1% | 38.1% | 53.4% |
| (10,000 – 15,000) SR | 11 | 26 | 22 | 7 | 66 |
| | 52.4% | 37.1% | 23.9% | 33.3% | 32.4% |
| More than 15,000 SR | | | | 1 | 1 |
| | | | | 4.8% | 0.5% |
| A.Y. 2012-2013 | 21 | 112 | 147 | 28 | 308 |
| Less than 7,500 SR | 4 | 9 | 26 | 10 | 49 |
| | 19.0% | 8.0% | 17.7% | 35.7% | 15.9% |
| (7,500 – 10,000) SR | 4 | 45 | 78 | 11 | 138 |
| | 19.0% | 40.2% | 53.1% | 39.3% | 44.8% |
| (10,000 – 15,000) SR | 12 | 56 | 43 | 7 | 118 |
| | 57.1% | 50.0% | 29.3% | 25.0% | 38.3% |
| More than 15,000 SR | 1 | 2 | | | 3 |
| | 4.8% | 1.8% | | | 1.0% |
| A.Y. 2013-2014 | 16 | 43 | 34 | 9 | 102 |
| Less than 7,500 SR | | | 4 | | 4 |
| | | | 11.8% | | 3.9% |
| (7,500 – 10,000) SR | 2 | 13 | 21 | 3 | 39 |
| | 12.5% | 30.2% | 61.8% | 33.3% | 38.2% |
| (10,000 – 15,000) SR | 14 | 27 | 8 | 6 | 55 |
| | 87.5% | 62.8% | 23.5% | 66.7% | 53.9% |
| More than 15,000 SR | | 3 | 1 | | 4 |
| | | 7.0% | 2.9% | | 3.9% |

Appendix A – Data Tabulations

Is your current work related to your area of study?

| | 2007-08 | 2008-09 | 2009-10 | 2010-11 | 2011-12 | 2012-13 | 2013-14 | Total |
|--------------------|------------|------------|------------|------------|------------|-----------|----------|-------------|
| Related | 149 | 177 | 190 | 224 | 114 | 15 | 3 | 872 |
| | 80.1% | 76.6% | 78.2% | 77.2% | 78.6% | 83.3% | 100.0% | 78.1% |
| Not Related | 37 | 54 | 53 | 66 | 31 | 3 | | 244 |
| | 19.9% | 23.4% | 21.8% | 22.8% | 21.4% | 16.7% | | 21.9% |
| Total | 186 | 231 | 243 | 290 | 145 | 18 | 3 | 1116 |
| | 100.0% | 100.0% | 100.0% | 100.0% | 100.0% | 100.0% | 100.0% | 100.0% |

Current Salary by Graduation Year

| Current Salary | 2007-08 | 2008-09 | 2009-10 | 2010-11 | 2011-12 | 2012-13 | 2013-14 | Total |
|-----------------------------|------------|------------|------------|------------|------------|-----------|----------|-------------|
| Less than 7,500 SR | | | 7 | 27 | 12 | | | 46 |
| | | | 2.9% | 9.2% | 8.1% | | | 3.8% |
| (7,500 – 10,000) SR | 47 | 76 | 87 | 111 | 72 | 11 | 47 | 404 |
| | 22.4% | 28.1% | 35.5% | 37.8% | 48.3% | 37.9% | 22.4% | 33.6% |
| (10,000 – 15,000) SR | 121 | 155 | 131 | 137 | 64 | 17 | 6 | 631 |
| | 57.6% | 57.4% | 53.5% | 46.6% | 43.0% | 58.6% | 85.7% | 52.4% |
| More than 15,000 SR | 42 | 39 | 20 | 19 | 1 | 1 | 1 | 123 |
| | 20.0% | 14.4% | 8.2% | 6.5% | 0.7% | 3.4% | 14.3% | 10.2% |
| Total | 210 | 270 | 245 | 294 | 149 | 29 | 7 | 1204 |
| | 100.0% | 100.0% | 100.0% | 100.0% | 100.0% | 100.0% | 100.0% | 100.0% |

Is your current work related to your area of study?

| | 2007-08 | 2008-09 | 2009-10 | 2010-11 | 2011-12 | 2012-13 | 2013-14 | Total |
|--------------------|-----------|-----------|-----------|-----------|-----------|----------|---------|------------|
| AE | 7 | 9 | 7 | 13 | 4 | | | 40 |
| Related | 4 | 6 | 4 | 8 | 3 | | | 25 |
| | 57.1% | 66.7% | 57.1% | 61.5% | 75.0% | | | 62.5% |
| Not Related | 3 | 3 | 3 | 5 | 1 | | | 15 |
| | 42.9% | 33.3% | 42.9% | 38.5% | 25.0% | | | 37.5% |
| CE | 26 | 40 | 41 | 50 | 34 | 3 | | 194 |
| Related | 23 | 35 | 38 | 42 | 28 | 3 | | 169 |
| | 88.5% | 87.5% | 92.7% | 84.0% | 82.4% | 100.0% | | 87.1% |
| Not Related | 3 | 5 | 3 | 8 | 6 | | | 25 |
| | 11.5% | 12.5% | 7.3% | 16.0% | 17.6% | | | 12.9% |
| CHE | 9 | 28 | 21 | 29 | 24 | 1 | | 112 |
| Related | 8 | 24 | 16 | 22 | 18 | 1 | | 89 |
| | 88.9% | 85.7% | 76.2% | 75.9% | 75.0% | 100.0% | | 79.5% |
| Not Related | 1 | 4 | 5 | 7 | 6 | | | 23 |
| | 11.1% | 14.3% | 23.8% | 24.1% | 25.0% | | | 20.5% |
| EE/Bio | 6 | 7 | 8 | 9 | 5 | 1 | | 36 |
| Related | 5 | 5 | 5 | 6 | 5 | 1 | | 27 |
| | 83.3% | 71.4% | 62.5% | 66.7% | 100.0% | 100.0% | | 75.0% |
| Not Related | 1 | 2 | 3 | 3 | | | | 9 |
| | 16.7% | 28.6% | 37.5% | 33.3% | | | | 25.0% |

Appendix A – Data Tabulations

Is your current work related to your area of study? (Cont'ed)

| | 2007-08 | 2008-09 | 2009-10 | 2010-11 | 2011-12 | 2012-13 | 2013-14 | Total |
|--------------------|------------|------------|------------|------------|------------|-----------|----------|-------------|
| EE/Comp | 11 | 18 | 14 | 22 | 9 | 1 | | 75 |
| Related | 10 | 15 | 11 | 18 | 7 | 1 | | 62 |
| | 90.9% | 83.3% | 78.6% | 81.8% | 77.8% | 100.0% | | 82.7% |
| Not Related | 1 | 3 | 3 | 4 | 2 | | | 13 |
| | 9.1% | 16.7% | 21.4% | 18.2% | 22.2% | | | 17.3% |
| EE/Elec | 16 | 20 | 19 | 14 | 10 | | | 79 |
| Related | 15 | 11 | 12 | 12 | 8 | | | 58 |
| | 93.8% | 55.0% | 63.2% | 85.7% | 80.0% | | | 73.4% |
| Not Related | 1 | 9 | 7 | 2 | 2 | | | 21 |
| | 6.3% | 45.0% | 36.8% | 14.3% | 20.0% | | | 26.6% |
| EE/Pow | 24 | 15 | 24 | 24 | 9 | 1 | | 97 |
| Related | 20 | 15 | 22 | 21 | 7 | 1 | | 86 |
| | 83.3% | 100.0% | 91.7% | 87.5% | 77.8% | 100.0% | | 88.7% |
| Not Related | 4 | | 2 | 3 | 2 | | | 11 |
| | 16.7% | | 8.3% | 12.5% | 22.2% | | | 11.3% |
| IE | 36 | 42 | 46 | 44 | 14 | 5 | 3 | 190 |
| Related | 31 | 32 | 38 | 35 | 12 | 5 | 3 | 156 |
| | 86.1% | 76.2% | 82.6% | 79.5% | 85.7% | 100.0% | 100.0% | 82.1% |
| Not Related | 5 | 10 | 8 | 9 | 2 | | | 34 |
| | 13.9% | 23.8% | 17.4% | 20.5% | 14.3% | | | 17.9% |
| ME/MENG | 40 | 32 | 41 | 49 | 23 | 5 | | 190 |
| Related | 23 | 21 | 24 | 34 | 17 | 3 | | 122 |
| | 57.5% | 65.6% | 58.5% | 69.4% | 73.9% | 60.0% | | 64.2% |
| Not Related | 17 | 11 | 17 | 15 | 6 | 2 | | 68 |
| | 42.5% | 34.4% | 41.5% | 30.6% | 26.1% | 40.0% | | 35.8% |
| ME/MEP | 8 | 18 | 14 | 21 | 9 | 1 | | 71 |
| Related | 8 | 11 | 13 | 15 | 7 | | | 54 |
| | 100.0% | 61.1% | 92.9% | 71.4% | 77.8% | | | 76.1% |
| Not Related | | 7 | 1 | 6 | 2 | 1 | | 17 |
| | | 38.9% | 7.1% | 28.6% | 22.2% | 100.0% | | 23.9% |
| MINE | 1 | 2 | 3 | 3 | 2 | | | 11 |
| Related | 1 | 2 | 3 | 3 | 2 | | | 11 |
| | 100.0% | 100.0% | 100.0% | 100.0% | 100.0% | | | 100.0% |
| NE/MPh | | | 2 | 7 | 2 | | | 11 |
| Related | | | 2 | 5 | | | | 7 |
| | | | 100.0% | 71.4% | | | | 63.6% |
| Not Related | | | | 2 | 2 | | | 4 |
| | | | | 28.6% | 100.0% | | | 36.4% |
| NE/Pow | 2 | | 1 | | | | | 3 |
| Related | 1 | | 1 | | | | | 2 |
| | 50.0% | | 100.0% | | | | | 66.7% |
| Not Related | 1 | | | | | | | 1 |
| | 50.0% | | | | | | | 33.3% |
| NE/RadP | | | 2 | 5 | | | | 7 |
| Related | | | 1 | 3 | | | | 4 |
| | | | 50.0% | 60.0% | | | | 57.1% |
| Not Related | | | 1 | 2 | | | | 3 |
| | | | 50.0% | 40.0% | | | | 42.9% |
| Total | 186 | 231 | 243 | 290 | 145 | 18 | 3 | 1116 |

Appendix A – Data Tabulations

Current Salary by Graduation Year and Program of Study

| | 2007-08 | 2008-09 | 2009-10 | 2010-11 | 2011-12 | 2012-13 | 2013-14 | Total |
|----------------------|-----------|-----------|-----------|-----------|-----------|----------|----------|------------|
| AE | 8 | 12 | 8 | 13 | 5 | | 1 | 47 |
| Less than 7,500 SR | | | | 3 | | | | 3 |
| | | | | 23.1% | | | | 6.4% |
| (7,500 – 10,000) SR | 2 | 2 | 5 | 4 | 2 | | | 15 |
| | 25.0% | 16.7% | 62.5% | 30.8% | 40.0% | | | 31.9% |
| (10,000 – 15,000) SR | 4 | 10 | 2 | 6 | 3 | | 1 | 26 |
| | 50.0% | 83.3% | 25.0% | 46.2% | 60.0% | | 100.0% | 55.3% |
| More than 15,000 SR | 2 | | 1 | | | | | 3 |
| | 25.0% | | 12.5% | | | | | 6.4% |
| CE | 27 | 45 | 41 | 50 | 36 | 4 | | 203 |
| Less than 7,500 SR | | | 2 | 4 | 3 | | | 9 |
| | | | 4.9% | 8.0% | 8.3% | | | 4.4% |
| (7,500 – 10,000) SR | 15 | 18 | 17 | 27 | 19 | 2 | | 98 |
| | 55.6% | 40.0% | 41.5% | 54.0% | 52.8% | 50.0% | | 48.3% |
| (10,000 – 15,000) SR | 9 | 19 | 16 | 18 | 14 | 2 | | 78 |
| | 33.3% | 42.2% | 39.0% | 36.0% | 38.9% | 50.0% | | 38.4% |
| More than 15,000 SR | 3 | 8 | 6 | 1 | | | | 18 |
| | 11.1% | 17.8% | 14.6% | 2.0% | | | | 8.9% |
| CHE | 11 | 32 | 22 | 30 | 24 | 2 | | 121 |
| Less than 7,500 SR | | | 1 | 2 | 1 | | | 4 |
| | | | 4.5% | 6.7% | 4.2% | | | 3.3% |
| (7,500 – 10,000) SR | 1 | 8 | 7 | 11 | 11 | 1 | | 39 |
| | 9.1% | 25.0% | 31.8% | 36.7% | 45.8% | 50.0% | | 32.2% |
| (10,000 – 15,000) SR | 8 | 21 | 14 | 15 | 12 | | | 70 |
| | 72.7% | 65.6% | 63.6% | 50.0% | 50.0% | | | 57.9% |
| More than 15,000 SR | 2 | 3 | | 2 | | 1 | | 8 |
| | 18.2% | 9.4% | | 6.7% | | 50.0% | | 6.6% |
| EE/Bio | 8 | 10 | 8 | 10 | 5 | 1 | | 42 |
| Less than 7,500 SR | | | | 3 | | | | 3 |
| | | | | 30.0% | | | | 7.1% |
| (7,500 – 10,000) SR | 2 | 3 | 2 | 3 | 4 | | | 14 |
| | 25.0% | 30.0% | 25.0% | 30.0% | 80.0% | | | 33.3% |
| (10,000 – 15,000) SR | 5 | 5 | 6 | 4 | 1 | 1 | | 22 |
| | 62.5% | 50.0% | 75.0% | 40.0% | 20.0% | 100.0% | | 52.4% |
| More than 15,000 SR | 1 | 2 | | | | | | 3 |
| | 12.5% | 20.0% | | | | | | 7.1% |
| EE/Comp | 13 | 19 | 15 | 22 | 9 | 1 | | 79 |
| Less than 7,500 SR | | | | 2 | | | | 2 |
| | | | | 9.1% | | | | 2.5% |
| (7,500 – 10,000) SR | 4 | 10 | 6 | 6 | 5 | | | 31 |
| | 30.8% | 52.6% | 40.0% | 27.3% | 55.6% | | | 39.2% |
| (10,000 – 15,000) SR | 4 | 6 | 9 | 8 | 4 | 1 | | 32 |
| | 30.8% | 31.6% | 60.0% | 36.4% | 44.4% | 100.0% | | 40.5% |
| More than 15,000 SR | 5 | 3 | | 6 | | | | 14 |
| | 38.5% | 15.8% | | 27.3% | | | | 17.7% |

Appendix A – Data Tabulations

Current Salary by Graduation Year and Program of Study

| | 2007-08 | 2008-09 | 2009-10 | 2010-11 | 2011-12 | 2012-13 | 2013-14 | Total |
|----------------------|-----------|-----------|-----------|-----------|-----------|----------|----------|------------|
| E/Elec | 22 | 24 | 18 | 14 | 10 | | | 88 |
| Less than 7,500 SR | | | | 3 | | | | 3 |
| | | | | 21.4% | | | | 3.4% |
| (7,500 – 10,000) SR | | 5 | 6 | 3 | 6 | | | 20 |
| | | 20.8% | 33.3% | 21.4% | 60.0% | | | 22.7% |
| (10,000 – 15,000) SR | 16 | 17 | 12 | 7 | 4 | | | 56 |
| | 72.7% | 70.8% | 66.7% | 50.0% | 40.0% | | | 63.6% |
| More than 15,000 SR | 6 | 2 | | 1 | | | | 9 |
| | 27.3% | 8.3% | | 7.1% | | | | 10.2% |
| EE/Pow | 29 | 20 | 25 | 26 | 9 | 3 | | 112 |
| Less than 7,500 SR | | | | | 2 | | | 2 |
| | | | | | 22.2% | | | 1.8% |
| (7,500 – 10,000) SR | 5 | 3 | 10 | 5 | 3 | 2 | | 28 |
| | 17.2% | 15.0% | 40.0% | 19.2% | 33.3% | 66.7% | | 25.0% |
| (10,000 – 15,000) SR | 20 | 15 | 15 | 20 | 4 | 1 | | 75 |
| | 69.0% | 75.0% | 60.0% | 76.9% | 44.4% | 33.3% | | 67.0% |
| More than 15,000 SR | 4 | 2 | | 1 | | | | 7 |
| | 13.8% | 10.0% | | 3.8% | | | | 6.3% |
| IE | 35 | 45 | 46 | 43 | 14 | 7 | 4 | 194 |
| Less than 7,500 SR | | | 1 | 1 | 1 | | | 3 |
| | | | 2.2% | 2.3% | 7.1% | | | 1.5% |
| (7,500 – 10,000) SR | 8 | 8 | 15 | 22 | 6 | 2 | | 61 |
| | 22.9% | 17.8% | 32.6% | 51.2% | 42.9% | 28.6% | | 31.4% |
| (10,000 – 15,000) SR | 16 | 29 | 19 | 18 | 6 | 5 | 4 | 97 |
| | 45.7% | 64.4% | 41.3% | 41.9% | 42.9% | 71.4% | 100.0% | 50.0% |
| More than 15,000 SR | 11 | 8 | 11 | 2 | 1 | | | 33 |
| | 31.4% | 17.8% | 23.9% | 4.7% | 7.1% | | | 17.0% |
| ME/MENG | 45 | 41 | 40 | 48 | 23 | 6 | | 203 |
| Less than 7,500 SR | | | 2 | 4 | 2 | | | 8 |
| | | | 5.0% | 8.3% | 8.7% | | | 3.9% |
| (7,500 – 10,000) SR | 8 | 10 | 10 | 12 | 8 | 2 | | 50 |
| | 17.8% | 24.4% | 25.0% | 25.0% | 34.8% | 33.3% | | 24.6% |
| (10,000 – 15,000) SR | 30 | 24 | 26 | 27 | 13 | 4 | | 124 |
| | 66.7% | 58.5% | 65.0% | 56.3% | 56.5% | 66.7% | | 61.1% |
| More than 15,000 SR | 7 | 7 | 2 | 5 | | | | 21 |
| | 15.6% | 17.1% | 5.0% | 10.4% | | | | 10.3% |
| ME/MEP | 9 | 20 | 14 | 22 | 9 | 3 | 2 | 79 |
| Less than 7,500 SR | | | | 2 | 1 | | | 3 |
| | | | | 9.1% | 11.1% | | | 3.8% |
| (7,500 – 10,000) SR | 2 | 8 | 7 | 9 | 7 | 1 | | 34 |
| | 22.2% | 40.0% | 50.0% | 40.9% | 77.8% | 33.3% | | 43.0% |
| (10,000 – 15,000) SR | 7 | 8 | 7 | 10 | 1 | 2 | 1 | 36 |
| | 77.8% | 40.0% | 50.0% | 45.5% | 11.1% | 66.7% | 50.0% | 45.6% |
| More than 15,000 SR | | 4 | | 1 | | | 1 | 6 |
| | | 20.0% | | 4.5% | | | 50.0% | 7.6% |

Appendix A – Data Tabulations

Current Salary by Graduation Year and Program of Study

| | 2007-08 | 2008-09 | 2009-10 | 2010-11 | 2011-12 | 2012-13 | 2013-14 | Total |
|----------------------|----------|----------|----------|----------|----------|----------|---------|-----------|
| MINE | 2 | 2 | 3 | 3 | 2 | 1 | | 13 |
| Less than 7,500 SR | | | | | 1 | | | 1 |
| | | | | | 50.0% | | | 7.7% |
| (7,500 – 10,000) SR | | 1 | | 1 | | | | 2 |
| | | 50.0% | | 33.3% | | | | 15.4% |
| (10,000 – 15,000) SR | 2 | 1 | 3 | 2 | 1 | 1 | | 10 |
| | 100.0% | 50.0% | 100.0% | 66.7% | 50.0% | 100.0% | | 76.9% |
| NE/MPh | | | 2 | 8 | 3 | | | 13 |
| Less than 7,500 SR | | | 1 | 3 | 1 | | | 5 |
| | | | 50.0% | 37.5% | 33.3% | | | 38.5% |
| (7,500 – 10,000) SR | | | | 5 | 1 | | | 6 |
| | | | | 62.5% | 33.3% | | | 46.2% |
| (10,000 – 15,000) SR | | | 1 | | 1 | | | 2 |
| | | | 50.0% | | 33.3% | | | 15.4% |
| NE/Pow | 1 | | 1 | | | | | 2 |
| (10,000 – 15,000) SR | | | 1 | | | | | 1 |
| | | | 100.0% | | | | | 50.0% |
| More than 15,000 SR | 1 | | | | | | | 1 |
| | 100.0% | | | | | | | 50.0% |
| NE/RadP | | | 2 | 5 | | 1 | | 8 |
| (7,500 – 10,000) SR | | | 2 | 3 | | 1 | | 6 |
| | | | 100.0% | 60.0% | | 100.0% | | 75.0% |
| (10,000 – 15,000) SR | | | | 2 | | | | 2 |
| | | | | 40.0% | | | | 25.0% |

Appendix B -Employers

Employer Name and Number of Engineering Alumni

Appendix B -Employers

| Employer Name | # |
|---|-----|
| Saudi Electricity Company | 180 |
| ARAMCO | 123 |
| SABIC | 120 |
| Saudi Airlines | 93 |
| Saudi Binladin Group (SBG) | 79 |
| KAU | 68 |
| Abdul Latif Jameel | 52 |
| Saline Water Conversion Corporation | 49 |
| General Authority of Civil Aviation (GACA) | 41 |
| KACST | 38 |
| Interior Ministry of Saudi Arabia | 34 |
| Ministry of Municipal and Rural Affairs | 28 |
| Ministry of Defence and Aviation | 26 |
| Dar Al-Handasah | 25 |
| King Abdullah Bin Abdul Aziz AL HARAM Expansion Project | 24 |
| AlMuhaidib Contracting | 21 |
| National Water Company | 21 |
| Savola | 21 |
| Ma'aden | 19 |
| AECOM | 14 |
| Innovators Consulting Engineers | 14 |
| Ministry of Transport | 12 |
| Royal Commission for Jubail and Yanbu (RCJY) | 12 |
| National Commercial Bank | 11 |
| Saudi Food & Drug Authority | 10 |
| Ministry of National Guard | 9 |
| Nesma Holding Co.Ltd | 9 |
| Petro Rabigh | 9 |
| Azizia Panda United | 8 |
| Parsons Corporation | 8 |
| Saudi Cable Company | 8 |
| UNILEVER | 8 |
| SDARA | 7 |
| Technical and Vocational Training Corporation | 7 |
| ABB for Electrical Industries | 6 |
| Al Arrab Contracting Co. | 6 |
| Al-Faisaliah Medical Systems | 6 |
| Halliburton | 6 |

| Employer Name | # |
|---|---|
| HIDADA | 6 |
| Hyder Consulting | 6 |
| KAUST | 6 |
| Siemens | 6 |
| Zuhair Fayeze Consultant Company | 6 |
| Advanced Vision Company | 5 |
| Consolidated Contractors Company | 5 |
| McDermott International | 5 |
| Rajhi Steel | 5 |
| Saudi Industrial Services Co. (SISCO) | 5 |
| Saudi Railways Organization | 5 |
| Taibah University | 5 |
| Al Wefag Trading & Manufacturing Co. Ltd. | 4 |
| ALHarbi Holding Company | 4 |
| Banaja Holdings | 4 |
| CRISTAL | 4 |
| GENERAL ELECTRIC HELTHCARE | 4 |
| Halwani Bros Co. | 4 |
| Jazan University | 4 |
| King Abdulaziz University Hospital | 4 |
| Marafiq: Power and Water Utility Company for Jubail and Yanbu | 4 |
| Ministry of Education | 4 |
| Ministry of Water & Electricity | 4 |
| National Air Services | 4 |
| NATPET : National Petrochemical Industrial Company | 4 |
| Pioneers Technical Systems | 4 |
| Ribas Group | 4 |
| Samsung C&T Corporation | 4 |
| Taif University | 4 |
| TUV Rheinland | 4 |
| Umm al-Qura University | 4 |
| Abudawood Company | 3 |
| Al-Kawther Industries Ltd. | 3 |
| Almarai | 3 |
| Al-Sorayai Group | 3 |
| Althoraiya Group | 3 |
| Daelim Saudi Arabia Company Limited | 3 |
| EACOM | 3 |
| ERRICSON | 3 |
| General Directorate of Civil Defense | 3 |
| High Institute for Elastomer Industries | 3 |

Appendix B -Employers

Employer Name and Number of Engineering Alumni

| Employer Name | # | Employer Name | # |
|---|---|--|---|
| Juffali | 3 | ROLACO trading and contracting | 2 |
| Kindasa Water Services Company | 3 | Saudi Air Conditioning Manufacturing Company (SAMCO) | 2 |
| King Faisal Specialist Hospital and Research Centre | 3 | Saudi Geological Survey | 2 |
| Petromin | 3 | Saudi Industrial Property Authority | 2 |
| PHILIPS HEALTH CARE | 3 | Saudia Aerospace Engineering Industries | 2 |
| Safari Group | 3 | Shibh Al Jazira Contracting Company | 2 |
| Saudi Arabian BECHTEL Company | 3 | SNC-LAVALIN | 2 |
| Saudi Arabian General Investment Authority | 3 | Southern Province Cement Company | 2 |
| SAUDI ARABIAN MARKETS CO. & SHELL OIL LTD. | 3 | STC | 2 |
| Saudi Chemical Company | 3 | Sumitomo Corporation | 2 |
| Saudi Oger | 3 | Tetra Pak | 2 |
| Schlumberger | 3 | The National Company for Glass Industries "ZOUJAJ" | 2 |
| Schneider Electric | 3 | University of Tabuk | 2 |
| Wadi Jeddah | 3 | Yamamh Steel | 2 |
| Al jazeera Bank | 2 | Yasref | 2 |
| Al Jazera Factories for Steel Products Company (JASCO) | 2 | Zahran Holding | 2 |
| ALHarbi Trading & Construction Co. | 2 | Zain | 2 |
| Al-Mardoof Contracting | 2 | Zamil Air Conditioners | 2 |
| AlZamil Heavy Industries LTD | 2 | A Consultant Company | 1 |
| AMIANTTT | 2 | Abbott Diagnostics | 1 |
| Arabian International Company for Steel Structure | 2 | Abdulaziz Bakri Consultant Engineer's Office | 1 |
| Bariq Mining Ltd. | 2 | Abdullah Hashim industrial Gases & Equipment Co. Ltd | 1 |
| City Center Engineering Consultant | 2 | Abdulrahman Al-Sharif Group | 1 |
| Fluor | 2 | ABS Group Company | 1 |
| Gulf Medical Co.Ltd. | 2 | Abunayyan Trading Corporation | 1 |
| Hyundai Heavy Industries | 2 | ABV Saudia | 1 |
| JGC Gulf International | 2 | ACWA Power International | 1 |
| Johnson Controls | 2 | Advanced Electronics Company | 1 |
| King Abdullah City for Atomic and Renewable Energy (K.A.CARE) | 2 | AFCONS Infrastructure | 1 |
| King Fahad Public Library | 2 | Afia International Company | 1 |
| King Khalid Military City for Operations & Maintenance | 2 | Afif Company for Real Estate Development | 1 |
| Ministry of Islamic Affairs | 2 | Aircraft Accessories and Components Company (AACC) | 1 |
| Ministry of Justice | 2 | Al Bassami International Business Group Co. | 1 |
| Ministry of Social Affairs | 2 | Al Kamal Import Office Company Limited | 1 |
| National Operation and Maintenance Co. Ltd(NOMAC) | 2 | Al Kifah Contracting Company | 1 |
| Orascom Construction Industries | 2 | Al Rajhi Construction LLC | 1 |
| PAN Kingdom Power Co.Ltd | 2 | Al Rajhi Projects | 1 |
| PEPSI | 2 | Al Tamimi Group | 1 |
| | | Al Yamama Company | 1 |
| | | Al Yamama Project | 1 |

Appendix B -Employers

Employer Name and Number of Engineering Alumni

| Employer Name | # | Employer Name | # |
|--|---|---|---|
| Alamodi Beverages Industries | 1 | Cisco Systems, Inc. | 1 |
| Al-Angari Holding Co. | 1 | Commercial Aidab Group | 1 |
| Albalad Alameen Development and Urban Regeneration Company | 1 | Conclinic Arabia | 1 |
| Alfaisal University | 1 | CPC COMPANY | 1 |
| Al-Fouzan Trading & General Construction | 1 | CTCI | 1 |
| Alinma Bank | 1 | DB Schenker in Saudi Arabia | 1 |
| Al-Kamal Import Co. | 1 | Doosan Heavy Industries & Construction | 1 |
| Al-Majaal Al-Arabi | 1 | Dr. Soliman Fakeeh Hospital | 1 |
| AlRosan for Contracting | 1 | DYNCORP | 1 |
| Al-Suwaidi Industrial Services co. Ltd | 1 | Economic Center for Contracting | 1 |
| Al-Talayi | 1 | El Seif Engineering Contracting Company | 1 |
| Al-Tuwairqi Holding Co. | 1 | Elixir Consulting | 1 |
| Anan Holding | 1 | Emerson | 1 |
| Arab Aluminum Company | 1 | Energya Industries | 1 |
| Arabian AMBER GLOW CO., LTD. | 1 | Enjaz IT | 1 |
| Arabian Auto Agency | 1 | Fast Metro Riyadh | 1 |
| Arabian Bemco | 1 | Fine Company | 1 |
| Arabian Cement | 1 | Fine ompany | 1 |
| Arabian Drilling Company | 1 | First National Operation and Maintenance Co. Ltd(NOMAC) | 1 |
| Arabian Gulf Manufactures Ltd (AGM) | 1 | Foot comfort center | 1 |
| Asas Universal Co.ltd | 1 | Gama | 1 |
| ASNA Company for Advanced Technologies Ltd. | 1 | Gas Arabian Services | 1 |
| Astra Polymers | 1 | GE Saudia Arabia | 1 |
| Atlascopco | 1 | General Directorate of Water - Najran | 1 |
| Attieh Steel Ltd | 1 | Glaxo | 1 |
| Axis Design Cons. | 1 | Global Suhaimi | 1 |
| Azm Consulting Engineers | 1 | Goody | 1 |
| Baamer Electric Factory | 1 | GPT Special Project Management, Ltd. | 1 |
| BAE System | 1 | Greif | 1 |
| BAE systems | 1 | Gulf International Bank | 1 |
| Baker Hughes | 1 | HADEED Saudi Iron & Steel Company | 1 |
| Barrick Gold Coop | 1 | Hayel Saeed Anam Group of Companies | 1 |
| BinDawood | 1 | Hilti Corporation | 1 |
| BONATTI | 1 | Honeywell Saudi Arabia | 1 |
| BTC | 1 | hp | 1 |
| Bupa Arabia for Cooperative Insurance | 1 | HP for P&G | 1 |
| CARE RT TL | 1 | Ibtikar | 1 |
| Careers - Juffali | 1 | IKK Isam Kabbani & Partners Co. LTD | 1 |
| CARRIER | 1 | ILF Consulting Engineer | 1 |
| CASSIDIAN | 1 | Imam Muhammad Ibn Saud Islamic University | 1 |
| Central Mining Co. Investment Ltd. | 1 | Insulated Roofs & Walls Industrial Co.,Ltd. | 1 |
| China National Chemical Engineering Group | 1 | International System Engineering | 1 |

Appendix B -Employers

Employer Name and Number of Engineering Alumni

| Employer Name | # | Employer Name | # |
|--|---|--|---|
| International Water Distribution Co.Ltd. | 1 | National Gas & Industrial Co. | 1 |
| Iowd | 1 | National Grid sa | 1 |
| JAL International Saudi Arabia | 1 | National Security | 1 |
| Jarir Bookstore | 1 | Neproplast – New Product Industries Co. Ltd. | 1 |
| Jazan Economic City (JEC) | 1 | Nesma Trading Co. Ltd | 1 |
| k.bot | 1 | New CC | 1 |
| Kabli Company | 1 | Northern Borders University | 1 |
| Kenana Trading & Contracting Co. | 1 | OLAYAN GROUB | 1 |
| King Abdulaziz City for the Military Operation and Maintenance - Tabuk | 1 | P&G Company | 1 |
| King Abdulaziz International Airport | 1 | Pepsi-Cola | 1 |
| King Abdulaziz International New Airport Project | 1 | PERI Group | 1 |
| King Fahd Military Medical Complex | 1 | Petra Engineering Industries Co. | 1 |
| Krimmley Contracting Company | 1 | Powers Building Center | 1 |
| Luberef | 1 | Presidency of Meteorology and Environment (PME) | 1 |
| Lumna | 1 | Prince Mohammed Medical City | 1 |
| Magrabi Optical | 1 | Publicis Graphics | 1 |
| Makkah Province Emirate | 1 | Qassim Cement | 1 |
| Manar Al Omran | 1 | Quraish Trading Co. Ltd. | 1 |
| Masoud Mubaireek Est. | 1 | Rabigh Arabian Water and Electricity (RAWEC) | 1 |
| Maternity & Children Hospital- Makkah | 1 | RCC | 1 |
| Mattax | 1 | Red Sea Gateway Terminal (RSGT) | 1 |
| Mecca Clock Tower | 1 | ROMCO | 1 |
| Mecca Development Authority | 1 | Salehiya Company | 1 |
| Medrar Real Estate Investments Co. | 1 | Salman Bin Abdulaziz University | 1 |
| Middle East Paper Company | 1 | SAMA Foundation | 1 |
| Milchem | 1 | SAMREF | 1 |
| Military Industries Corporation (Saudi Arabia) | 1 | Sanitary Paper Factory | 1 |
| Ministry of Commerce and Industry | 1 | SAS | 1 |
| Ministry of Health | 1 | Saudconsult | 1 |
| Ministry of Housing | 1 | Saudi Brothers' Commercial Company | 1 |
| Ministry of Labor Saudi Arabia | 1 | Saudi Construction Company (SCC) | 1 |
| Mobily | 1 | Saudi Customs | 1 |
| Modon International | 1 | Saudi Engineering Group International | 1 |
| Mohamed Harasani Architects | 1 | Saudi German Aluminium Products Co. Ltd (SGAPCO) | 1 |
| Mohamed Yousuf Naghi Motors | 1 | Saudi German Brakes Manufacturing Company | 1 |
| Msharf Al Shrq | 1 | Saudi Holandi Bank | 1 |
| Nalco | 1 | Saudi Industrial Resins | 1 |
| Napco Saudi Arabia | 1 | Saudi Industrial Tools Company | 1 |
| NASCO | 1 | Saudi Railway Company | 1 |
| National Company for Mechanical Systems | 1 | Saudi Standards, Metrology and Quality Org. | 1 |
| National Company for Mechanical Systems (NCMS) | 1 | | |

Appendix B -Employers

Employer Name and Number of Engineering Alumni

| Employer Name | # |
|--|---|
| Saudi Valves Manufacturing Co.Ltd. | 1 |
| Security Forces Hospital | 1 |
| SEDCO Holding | 1 |
| Shagra University | 1 |
| Sheikh Abdullah bin Isa Al Khalifa Secondary Industrial School | 1 |
| SIPCHEM | 1 |
| SMC | 1 |
| Sooj International | 1 |
| Sunbulah Group | 1 |
| Tamer Group | 1 |
| Tamkean | 1 |
| Tatweer petroleum | 1 |
| TeamTime Co. | 1 |
| Tecnicas Reunidas | 1 |
| The Arabian Petroleum Supply Company | 1 |
| The National Titanium Dioxide Company Ltd | 1 |
| Thuraya factory | 1 |
| Tihama Towers factory Concrete | 1 |
| Total Safety Quality Center | 1 |
| Turnar Arabia | 1 |
| Turner Construction Company | 1 |
| United Food Company | 1 |
| University of Dammam | 1 |
| V3 Middle East Engineering Consultants Co | 1 |
| Weatherford International | 1 |
| Wisdom of Knowledge Training Center | 1 |
| World Maritime Agencies Company | 1 |
| Yanbu Cement Company | 1 |
| Yanpet | 1 |
| Yokogawa Electric Corporation | 1 |
| Yusuf Bin Ahmed Kanoo Group | 1 |

Appendix C – Alumni Survey



King Abdulaziz University

Faculty of Engineering

Alumni Relations Unit

Phone : (02) 6402000/68550 : eng.alumni@kau.edu.sa

PROFILE

| |
|--------------------------|
| For Official Use |
| Date : _____ Note: _____ |

Graduation Year _____

KAU ID. NO. _____

Name _____

Permanent Address

Your Present Address

Your Contact Information

Tel. No.

Mobile No.

Email ID

PROFESSIONAL DETAILS

How long did it take you to find your first position after graduation from KAU?

- the position was lined up for you before graduating
- 1 -3 month
- 3-6months
- 6-9 months
- 9-12 months
- 12 months or longer (specify duration)

First Occupation : Self Employed / Employed /Higher Studies / Seeking Employment.

Name of the Firm / Institution : _____

Job Title : _____

Firm's / Institution's Address : _____

was your first work related to your area of study? Yes No

Starting Salary : More than 15,000 SR (10,000 – 15,000) SR (7,500 -10,000) SR Less than 7,500 SR

Appendix C – Alumni Survey

Current Occupation: Employed Pursuing HE Self Employed Seeking
employment

Name of the Firm / Institution : _____

Firm's / Institution's Address :

Job Title : _____

Firm's / Institution's Address :

Is your current work related to your area of study? Yes No

Current Salary: More than 15,000 SR (10,000 – 15,000) SR (7,500 -10,000) SR Less than 7,500 SR

Please specify the type of organization/company of your employer? Check that all apply.

- | | | |
|------------------------------------|-------------------------------------|---|
| <input type="radio"/> Governmental | <input type="radio"/> Nonprofit | <input type="radio"/> Private |
| <input type="radio"/> Military | <input type="radio"/> Self-employed | <input type="radio"/> Academic and Research |

In your opinion, what should be done to improve the engineering education at King Abdulaziz University? Please give your suggestions.

Thank you for your participation and response



KING ABDULAZIZ UNIVERSITY

Faculty of Engineering

Alumni Relations Unit

Tel. (+966) (12) 6402000, Ext 68550

eng.alumni@kau.edu.sa

August 2014

Copyright © 2014 KAU - Faculty of Engineering .All rights reserved.