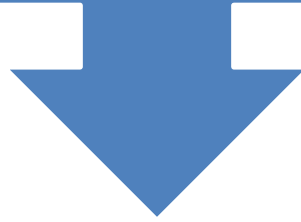




المملكة العربية السعودية
جامعة الملك عبد العزيز
كلية العمارة والتخطيط

مشاريع طلاب قسم العمارة



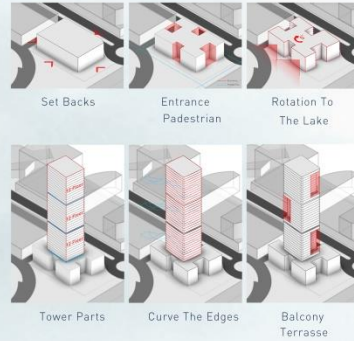


The Executive Centre

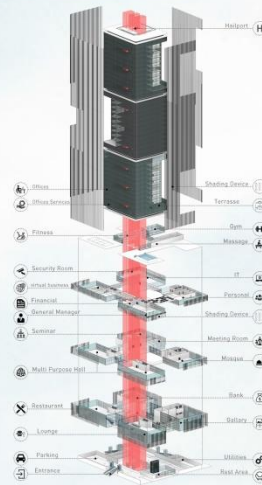
Brief

An executive business center for the growth of business and business people through the service of high-end and in a very professional manner working spaces that work smoothly and flexibility and visions that are unmatched by the global network of members and experiences that raise the culture of companies. Which helps to meet the need for companies and institutions to develop from their level

Design Response



Functions Organization





المملكة العربية السعودية

جامعة الملك عبد العزيز

كلية العمارة والتخطيط

AR King Abdulaziz University
Faculty of Environmental Design

مدرسة

AL-RAJHI REGIONAL BANK

The project is to design Al Rajhi Bank regional office building as a land mark in the Makkah region that reflects the strength and the stability of the bank.



Saudi Arabia ,Makkah Province ,
Jeddah ,Al Ruwais

Concept

The concept was to take the bank values and translate them in architectural forms, taking into consideration the urban context and bank function.

Meritocracy Integrity & Transparency Islamic values Modesty Passion to Serve Our Customers



Defining, differentiating and reinforcing excellence in people



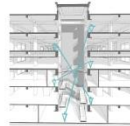
Openness and highest standards of corporate & personal ethics, in all that we do



Our Commitment is to follow the Islamic basis



Humility in thought and deed in everything we do

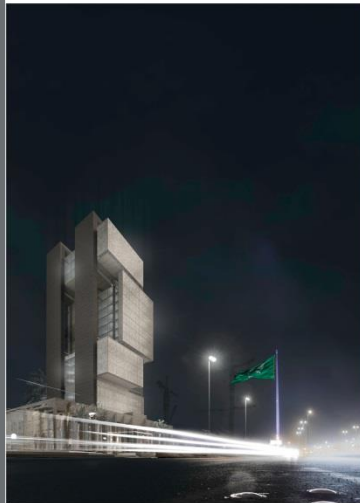
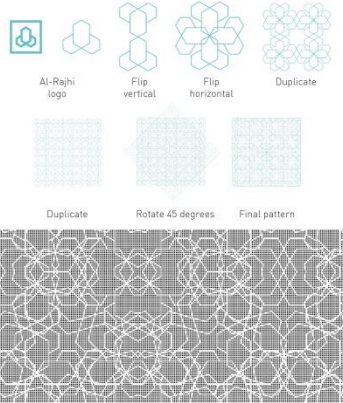


A strong commitment to anticipate and address customer needs beyond expectation

Pattern development



Pattern development



Student: Omar Abdullah Badriek | Supervisor: Arch. Hammad Fikri

FED



KAU Inventions Hub / Ahmad Eid

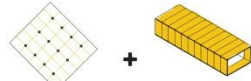
KAU Hub focuses on creating an opportunity to create common spaces between technical and engineering companies and students of the Faculty of Engineering, by providing workshops on engineering product design and offices for technical companies, and recreational spaces for users of these spaces. The site is characterized by a distinctive external area will help users to benefit from the experience.



Concept

The design was directed at the construction of a structural system based on the connecting of the vents that were designed in advance to be installed in the surface of the academic field. The units are designed on a certain scale to include spaces such as meeting rooms, offices and workshops.

How should I design KAU hub?

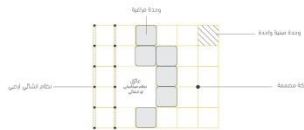


نظام يتالي يقوم على ربط الوحدات
تصميم نظام يقوم على ربط الوحدات
بعضها البعض.

وحدة بناء فراغية مسيطة التصميم
يتم تصميمها خارج الفراغ و تركيبها
في هي الفراغ الإنشائي المسبق.

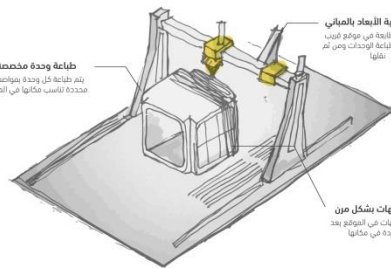


تركيب الوحدة لأكثر من وحدة
يشكل مختلف لظهور وحدة الفراغ



يعتمد تصميم مركز الإبداع على تركيب عدة وحدات بأشكال مختلفة
لتحقيق الفراغات المعمارية المطلوبة، بالإضافة لتتصالية هذه الفراغات
بوحدات حركة تساعد على الانتقال بين كل فراغ وفراغ

The design of the creativity center depends on the
installation of several units in different forms to achieve
the required architectural spaces, in addition to connecting
these spaces with units of movement that helps to move
between each vacuum and vacuum



طباعة وحدة مخصصة
يتم طباعة كل وحدة بمواصفات
محددة تناسب مكانها في الموقع

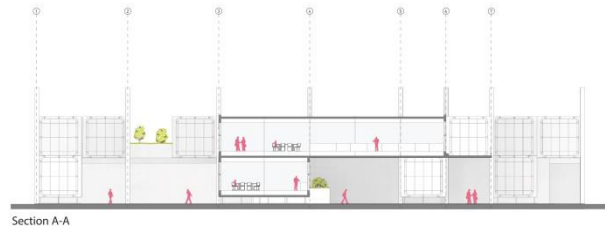
طباعة لتلبية الأبعاد بالعملي
يتم تركيب الطباعة في موقع هيرب
من الموقع لتلبية الوحدات ومن ثم
نقلها

تركيب الواحدات بشكل من
يتم تركيب الواحدات في الموقع بعد
تثبيت الوحدة في مكانها



Sections

This section shows the spaces of the workshops connected to each other by the designed units, as well as the external walkways and the outdoor spaces. The units connected with each other by HSS steel column.





AR King Abdulaziz University
Faculty of Environmental Design

الرسالة

MIXED USE

Mutualistic Renovation

There are a lot of abandoned historical buildings having quality to become so much more. But the city from urban planning to architectural designs haven't effectively covered all the spaces. We should see them as the opportunities to integrating the old systems with new technology.

Interior Perspective + House Condition



CONCEPT PHILOSOPHY

The concept Philosophy is about accepting the past as a past, exactly like human scars. everyone have a body scars and every scars represent a memory or a story to be told in our life. we should appreciate those types of stories because thats what make an identity for us



DEMOLISHED

Completely new building with high contrast with the surrounding context



SEMI

Renovate by using steel and glass with the existing parts

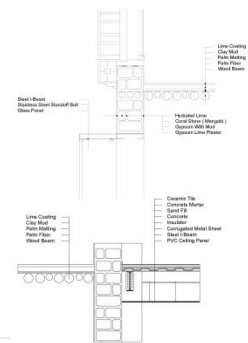
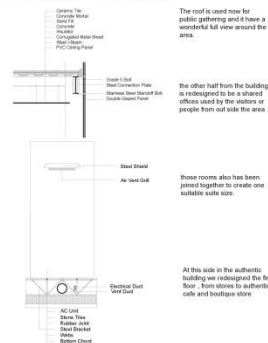


BUILT

Renovate by using an old traditional methods and materials

THE
PAST
IS
THE
PAST

Wall Section + Details



Plans



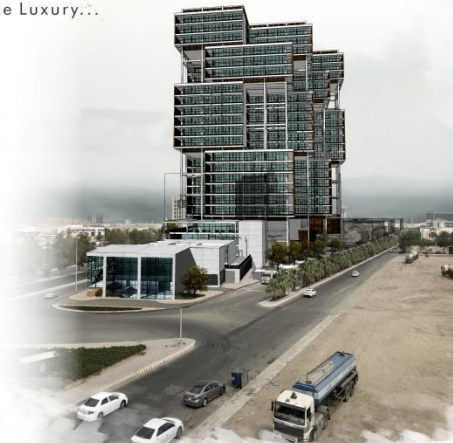
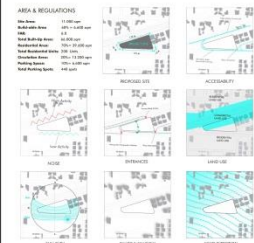


AR King Abdulaziz University
Faculty of Environmental Design

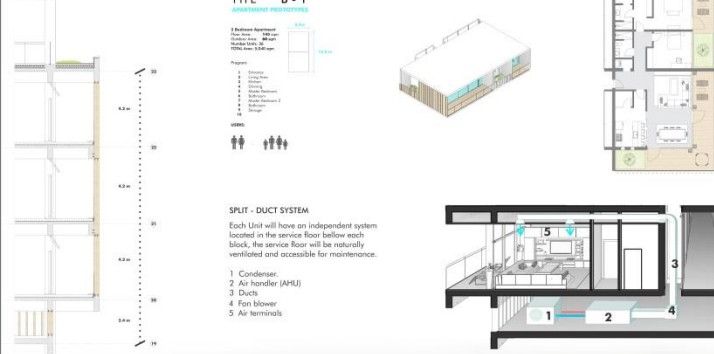
Low Energy Residential Tower

By providing the means to a healthy lifestyle for individual users occupying the building to practice their daily activities through the buildings facilities. The project aims to support a healthy way of life by allowing natural ventilation and natural lighting, as well as energy generation through PV cells in a very hot climate, also taking care of these re-sources by recycling and re-using grey water. the projects main objective is to promote a high-end style of living with a breath of fresh-air and reduction of energy cost.

A Greener Way to Introduce Luxury...



Section



Elevations





AR King Abdulaziz University
Faculty of Environmental Design

حرف

Public Library

Project Statement

Since the 20th century education has been recognized as an individual right. In a society of a life learning, public libraries are the nodes connecting the local learning setting with the global resources of information and knowledge.

The main focus of the project is to encourage a society of self and life learning in Saudi Arabia and to design a place where information of all kinds could be found easily, while learning and connecting with each other, forming a community.

In order to encourage the Saudi society for reading, the project will go and find the users instead of the users coming to it. By placing the project on a public area, making the library a part of the public realm.

Strategy

The reading community in Jeddah is very low and not many reading places are found. The strategy is to attract the people to a public space which will contain a public library. This way users who are from the reading community will be able to have a place in which they can read, and people who are not used to reading or libraries will find themselves in or near one.

Definition

A public library is accessible by the general public and is generally funded by a public source. They are considered an essential part of having an educated and literate population.





AR

King Abdulaziz University
Faculty of Environmental Design

مقدمة

JEDDAH CIVIC HUB

- BRIEF /

- JEDDAH CIVIC HUB PROJECT, To Serve All Members Of The Community In The Region and City Of JEDDAH.
- It Consists of Main Components : SHOPPING MALL, OFFICES. It Can be Rented by Users in Days, Months and Years.

OBJECTIVE OF THE PROJECT

- Create Active Spaces To Produce Live Environments.
- The Development of Place To Pull Together Increase Social Cohesion.
- An Increase in the Circulation System and Quality of Space.
- Achieve Visual Contact in All Elements of Project.

- DESIGN RESPONSE /

- PEDSTRIAN AXIS



- CENTER HEART OF JEDDAH



- MAIN AXIS INSIDE PROJECT



- DISTRIBUTION OF BLOCKS BETWEEN AXIS



- SITE CONTEXT AND ENTRANCE



- CONFIGURE THE VERTICAL FORM



- WIND DIRECTION AND SHADOW



- TOWER AND VOIDUH



- FUNCTIONS ORGANIZATI ON /

52%

OFFICES ZONE
- The Main Component of the Project is Due to the Location (Business Area and the Proximity to the Business Area) which are office spaces that can be rented for all users (Individual and Corporate) of JEDDAH.

40%

SHOPPING MALL
- Attracts and Serves the Needs of Users and Residents of Jeddah (Retail and Food and Beverage) and the Residents of The City (Commercial, Recreational, Restaurants and Cafes) to Serve Users of the Project Area.

8%

CAFE ZONE
- The Components of the Project has been Added to Serve the Metro Station beside the Project and Office Workers.





Growth Center For urban agriculture

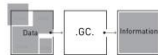
Mohammed Alwadei
Department of architecture | Faculty of environmental design IKAU
LESS Studio 500 | 2017/2018

Project Brief

is a center that contributes to show the value and importance of scientific research, and out of thousands of data to the scope of information and ambientment and be dedicated to the scope structure and food and its importance in the direct impact on the surrounding community.

الهدف المشروع

هو مركز يساهم في اظهار قيمة وأهمية البحث العلمي، والخروج من نطاق المئات في نطاق المعلومات، والتسليم على نطاق المجتمع، والتركيز على النطاق الهيكلي والغذاء، وأهميته في التأثير المباشر على المجتمع المحيط.



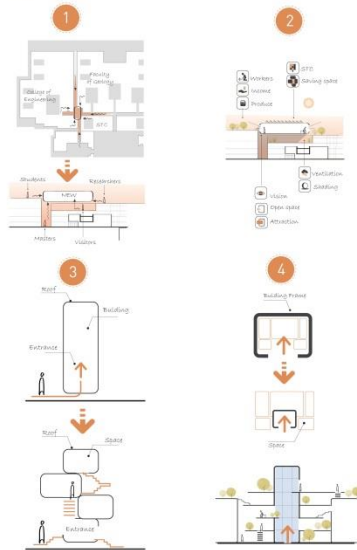
What is urban agriculture?

Urban agriculture is growing plants and raising animals in and around cities. The main feature of urban agriculture which distinguishes it from rural agriculture, is that it is integrated into the urban economic and ecological system. Urban agriculture is an integral part of interaction with the urban ecosystem. These images include the use of urban dwellers as workers and the use of typical urban resources (such as organic waste as fertilizer and urban wastewater for irrigation), as well as direct interaction with urban consumers, and urban agriculture are not remnants of the past that will vanish and will not bring rural migrants who will lose their rural skills with the passage of time. It is an integral part of the urban system.

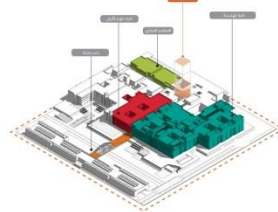
ما هي الزراعة الحضرية؟

الزراعة الحضرية هي تزايد النباتات وتربية الحيوانات داخل المدن ودولها وتشمل التربة الأزرق في الزراعة الحضرية. والى انتماء من الزراعة الحضرية هي انها تفاعل في النظام الاقتصادي والزراعي الحضرية، فالزراعة الحضرية هي جزء لا يتجزأ من النظام البيئي الحضرية المتكامل. وتشمل هذه التفاعل استخدام سكان الحضر كمعمال واستخدام موارد حضرية كمواد مغذية (مثل مياه الصرف الصحي كسماد) وتفاعل مباشر مع المستهلكين في المناطق الحضرية، والزراعة الحضرية ليست بقايا الماضي التي ستختفي مع مرور الوقت، وهو جزء لا يتجزأ من النظام الحضرية.

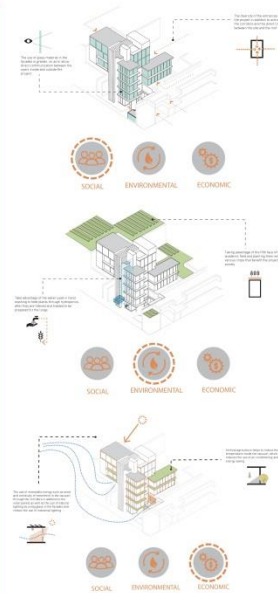
Concept



Location



Goals





FACULTY OF ENVIRONMENTAL DESIGNS DEVELOPMENT | OTHMAN SAEED ALGHAMDI

1.0 INTRODUCTION | BACKGROUND

King Abdulaziz university is considered one of the most important landmarks in Jeddah. It is one of the most popular places in Jeddah on a daily from all sectors of the society, because it contains many activities and educational and recreational services. The project comes as a continuation of campus development in terms of urban and environmental. The project aims to improve one of the buildings of the academic square in terms of architectural and environmental significantly. Faculty of Environmental design founded in 1976, then college moved to new building of academic square in 2013. New faculty of environment design building was first college building establish in the academic square. It is located in southern part of academic square and contains five floors, two front and rear courtyards, and a lobby in the middle of the building.



5 Floors



2 Main Entrances



High= 25.5m



3 Free Facade

2.0 CONCEPT | CONCEPT & MASS IMPROVEMENT



1. Increase linkage with external spaces, and connect the internal space with the southern region by providing commercial activities.



2. Extend some spaces to enhance to provide views of attractive areas.



3. Add a mass on the fourth floor for response to the wind effect at the site.



4. Keep the structural system of the building and facade as it and improve the windows on the upper floors.



5. Covering the building with a roof that allows air and light to reduce direct sunlight.

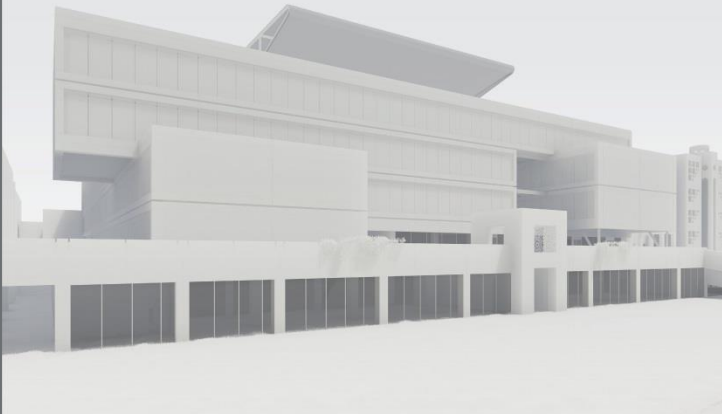


Despite the high traffic on Colleges street, but there was an entrance led down to the college or the academic field from the south. A new gallery has been created but was created in a bad way that does not perform the required function. Linking the College of Arts and Faculty of Environmental Design to create more opportunities in work engagement.



Establish a gallery that includes the work of students of Faculty of Environmental Design and the Faculty of Arts, and be an entrance dedicated for Faculty of Environmental Design in addition to being an entrance to academic square. Thus contributing to attract segment of people to visit the gallery.

3.0 PLAN | FIRST FLOOR PLAN ON SITE





AR King Abdulaziz University
Faculty of Environmental Design

خريطة

Reimagining KAU FED Workshops

Faculty of Environmental Designs

Project Brief

The Faculty of Environmental Design does not work as a school of architecture and lacks many of the elements ranging from spaces and functional and social relations and the relationship between the departments and in view of the universities in the world, we find that the workshops are the backbone of these disciplines and one of the most important tools in the disciplines of architecture and workshops dealing with models and manufacturing techniques of modern technology Cutting laser and three-dimensional printing in addition to handcrafts cut and other works and also note that they are not available in the college, despite the need for students mainly in many of their projects and it is an important area to stimulate creativity and a place as a point The meeting of students of different disciplines within the college in addition to what the workshops need additional spaces to present the work with an environment that stimulates communication and work within an integrated educational system

Problem Statement

Workshops need to be more organized and inspirational, rather than just a functional filling process for the vacuum. In addition, there are some gaps between the weakness of the functional relationship and the lack of social and visual stimuli both inside and outside the spaces. The college is the place where the student spends most of his day in addition to the faculty members

تعريف بالمشروع

كلية تصميم البيئة لا تعمل ككلية عمارة وتفتقر للعديد من المميزات بدءا من المراتب والمساحات الوظيفية والاجتماعية والثقافية بين الأقسام والمساحات الخاصة على مستوى العالم نجد أن ورش العمل هي العمود الفقري لهذه التخصصات وأحد أهم الأدوات المهمة في التخصصات المعمارية وهذه الورش تعني بالمساحات وتصنعها بأشكالها الفنية الحديثة من فني ليزر والطباعة ثلاثية الأبعاد بالإضافة للأعمال اليدوية من فني وغير ذلك من الأعمال وعملا لتلبية عمود الأعمدة في الكلية وتم تلبية الطلب لها بشكل أساسي في تحديد عن مشاريعهم كما أنها مساحة مهمة لتطوير الابداع ويمكن معالجة نقطة ضعف طلب التخصصات المتعلقة داخل الكلية بالإضافة مع وجود بيئة تدفع على التواصل والعمل ضمن منظومة تعليمية متكاملة

Project Location

KAU



الموقع

جامعة الملك عبد العزيز

Process Design



الاستراتيجيات

الوظيفة والتجوية

Light Ventilation
توفير بيئة عمل صحية وجودة عالية للبيئة الداخلية باستخدام تقنيات التهوية الطبيعية والتجوية
Providing ventilation solutions for good machinery as a result of natural materials and ventilation for vacuum users

الزيارة

Visit
توفير بيئة عمل صحية وجودة عالية للبيئة الداخلية باستخدام تقنيات التهوية الطبيعية والتجوية
Providing ventilation solutions for good machinery as a result of natural materials and ventilation for vacuum users

الوصولية

Accessibility
توفير بيئة عمل صحية وجودة عالية للبيئة الداخلية باستخدام تقنيات التهوية الطبيعية والتجوية
Providing ventilation solutions for good machinery as a result of natural materials and ventilation for vacuum users



• مشغول الفراغات وظيفيا
• إبطاء تيار عن فراغات مصممة
• متناورة ويربط بينها الأبواب تقريبا

• فراغات مغلقة عزلة اجتماعية
• ضعف التواصل البصرية والتالي
• ضعف الاتصال الاجتماعي

• المائل البصري
• الجوارح والحواجز المغلقة بصريا

Functional filler spaces
The functions are contiguous spaces that are adjacent and connected by the doors

Spaces are social isolation
Weak visual communication, thus weak social communication

Symmetric
Closed Space

