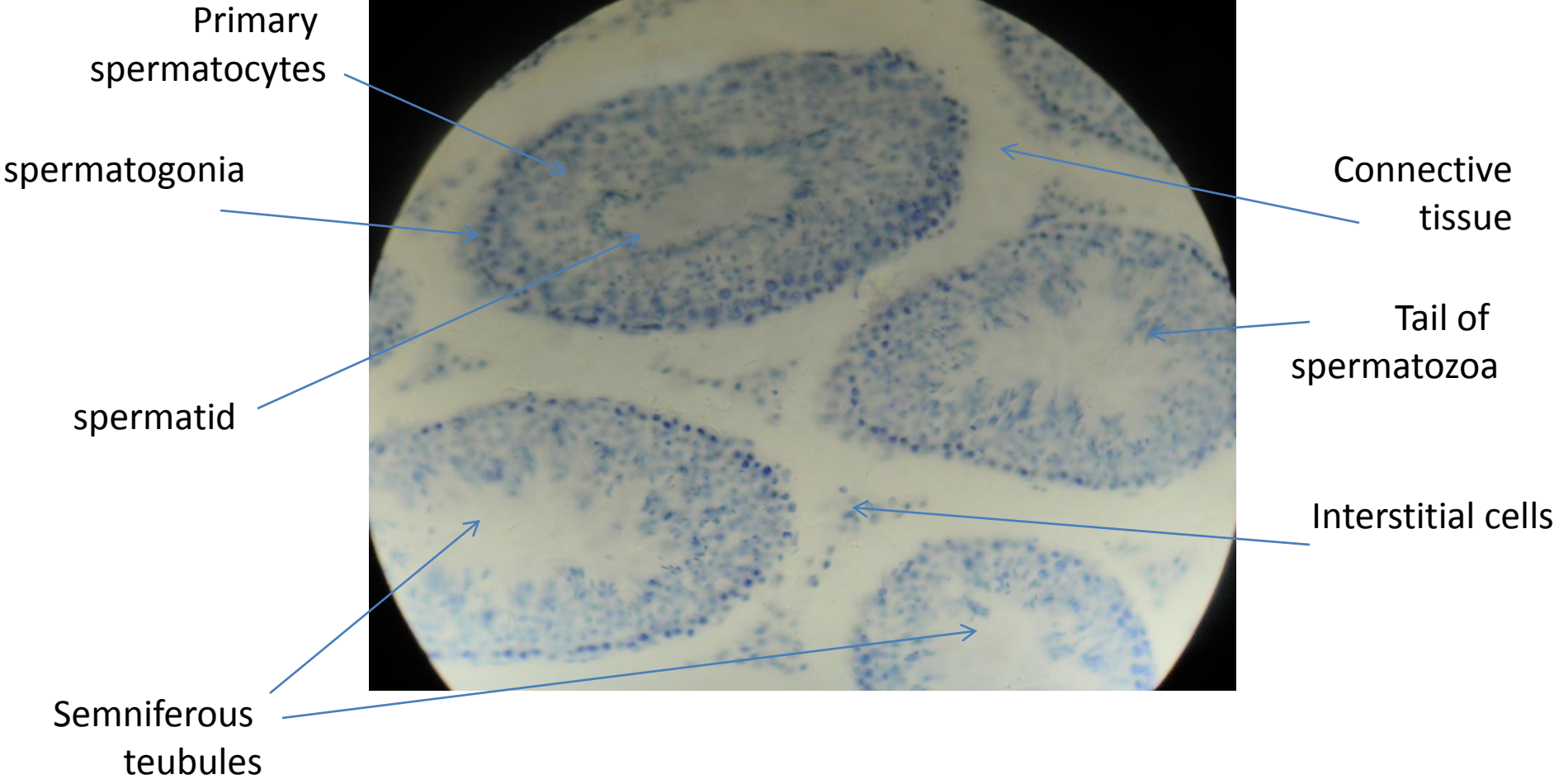


mammalian

Semiferous
tubules

Connective
tissue



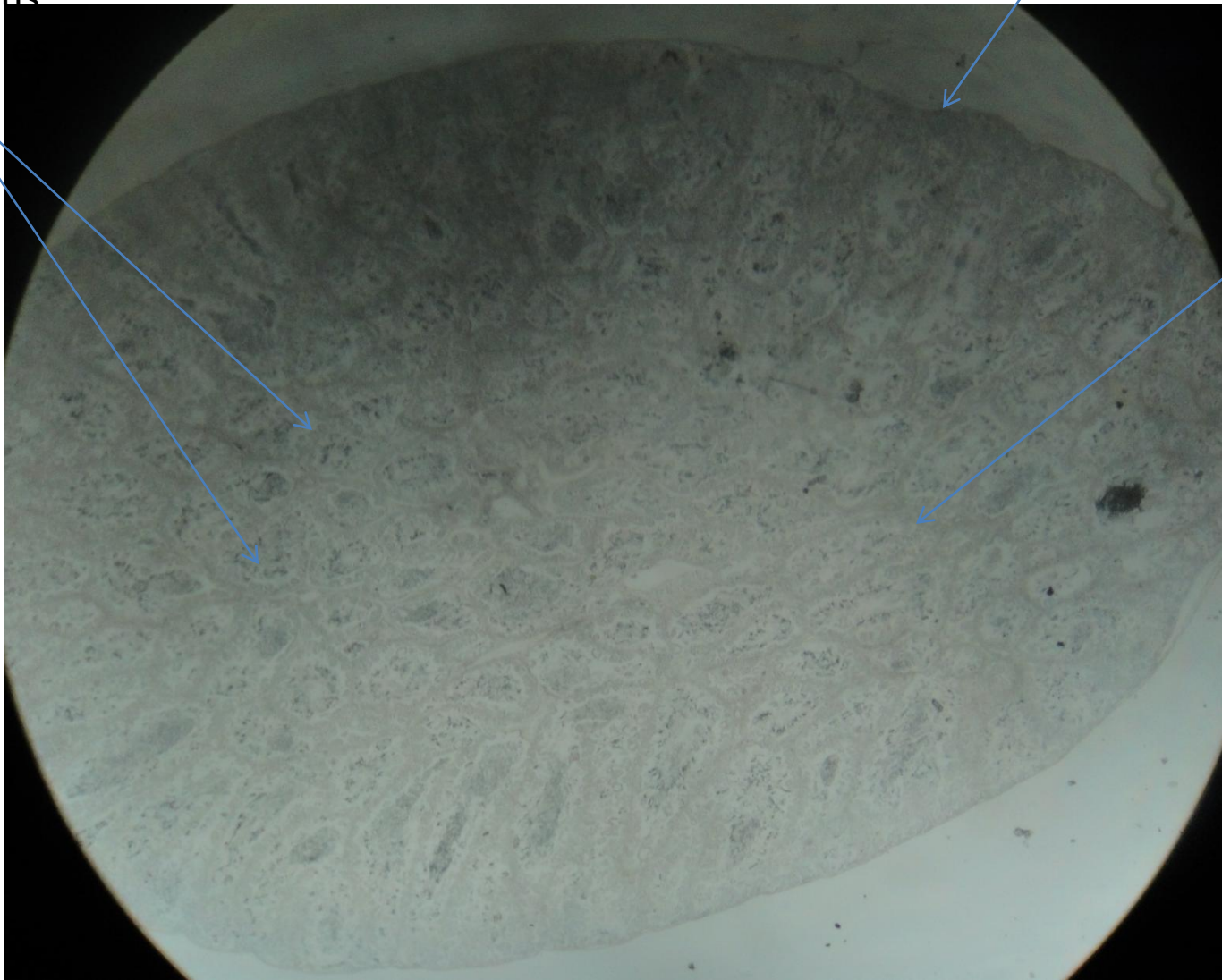


frog

Tunica albuginea

Semiferous
tubule

Connective
tissue





secondary
spermatocytes

Primary
spermatocytes

spermatogonia

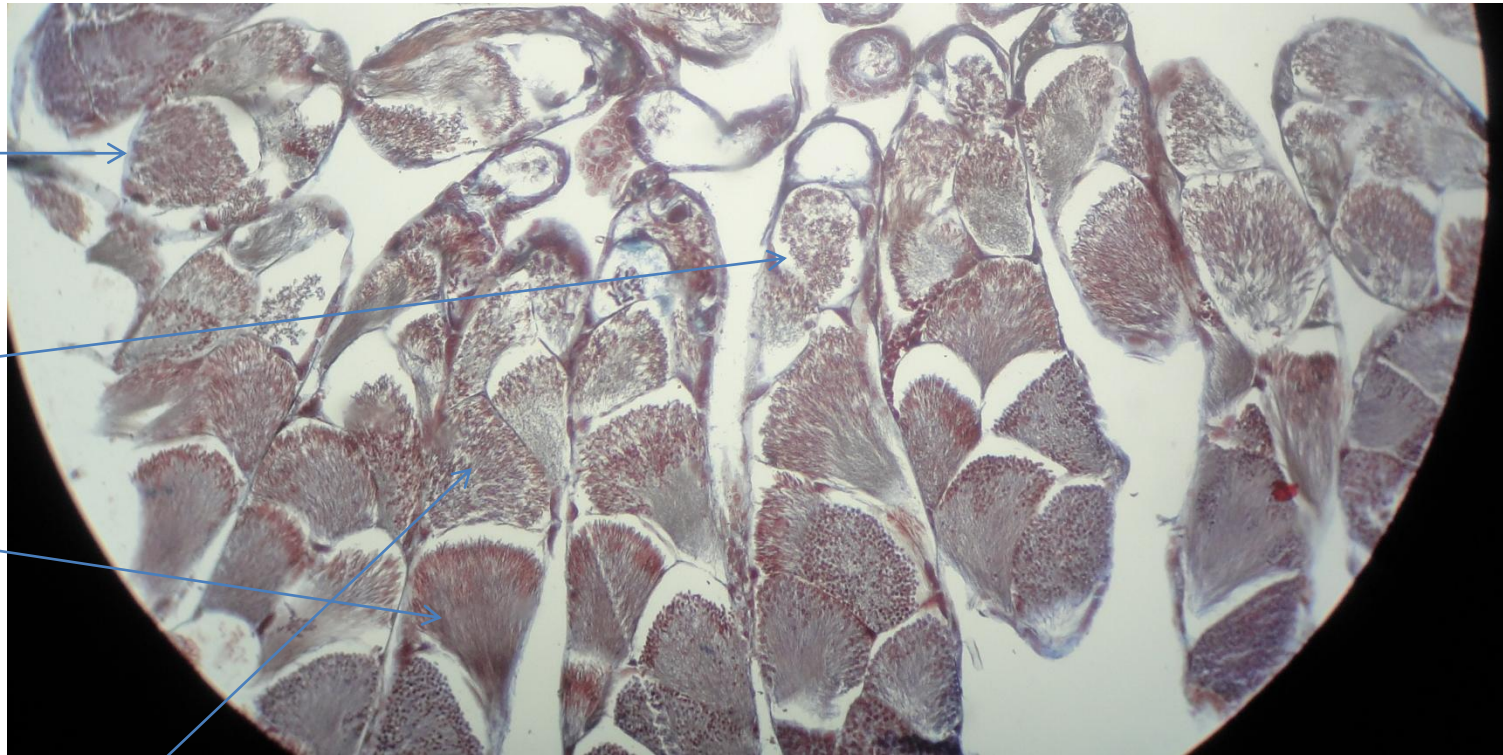
spermatid

Connective
tissue

spermatozoa

Interstitial cells

insect



Epithelial
sheath

spermatocytes

spermatozoa

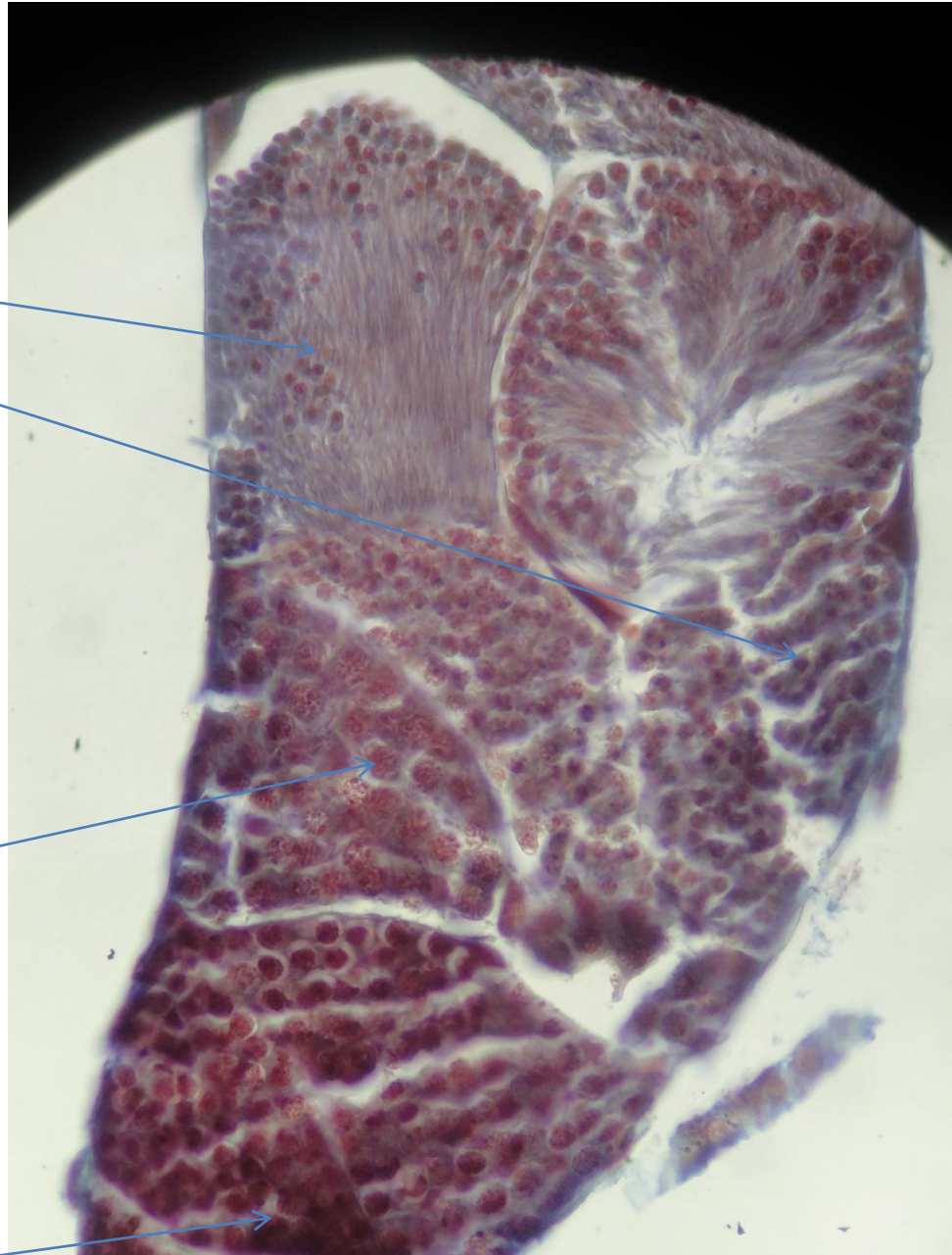
spermatid

spermatozoa

spermatid

spermatocytes

spermatogonia



bird

Semniferous
teubules

Connective tissue

Blood vesicle

Tunica albuginea

