

# Early Development Stages of the Chick embryo

**Lab 6**



## EGG WHITE:

Inner layer of thin albumin

Outer layer of thin albumin

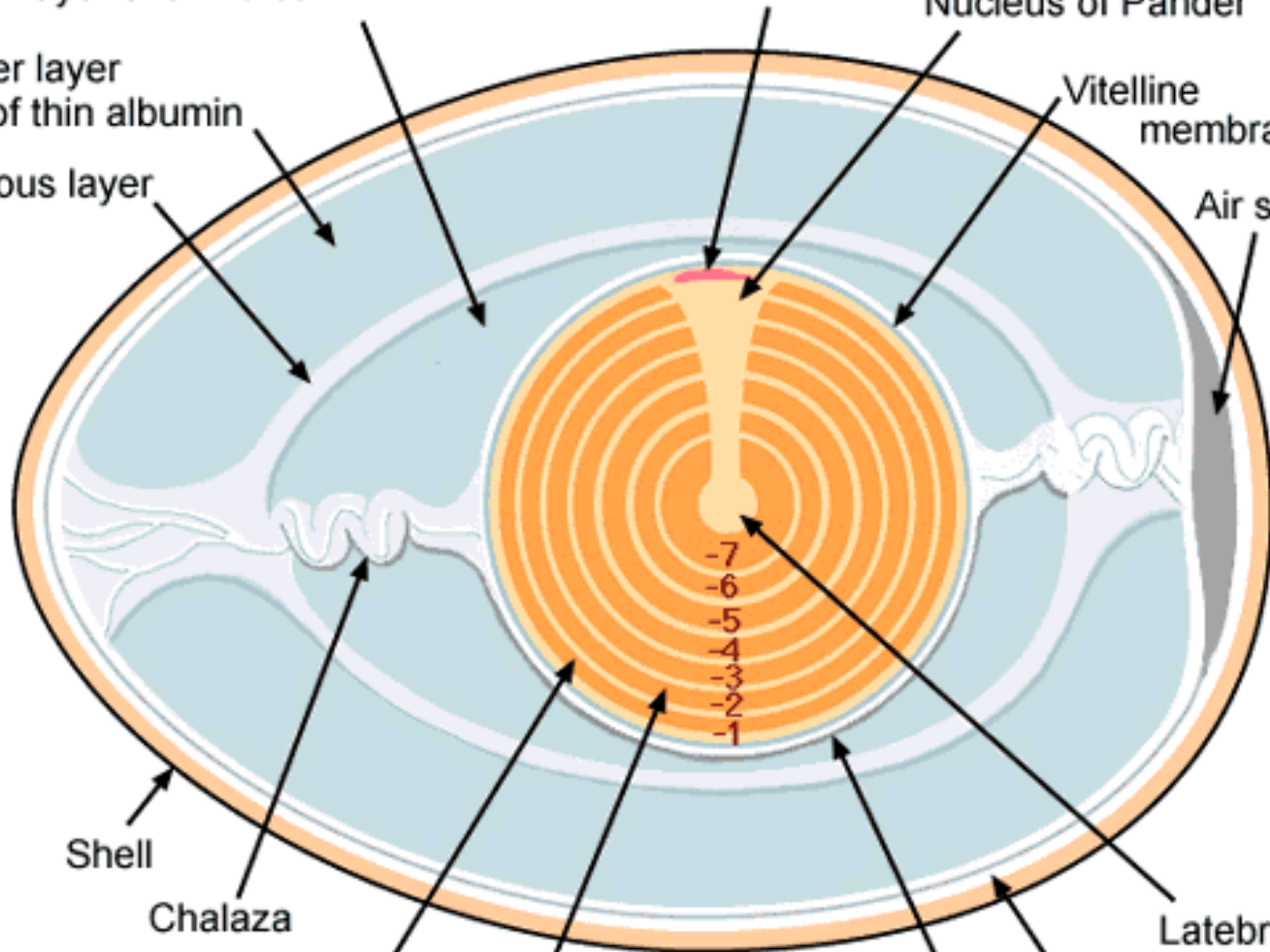
Fibrous layer

Blastoderm

Nucleus of Pander

Vitelline membrane

Air space



Shell

Chalaza

White yolk

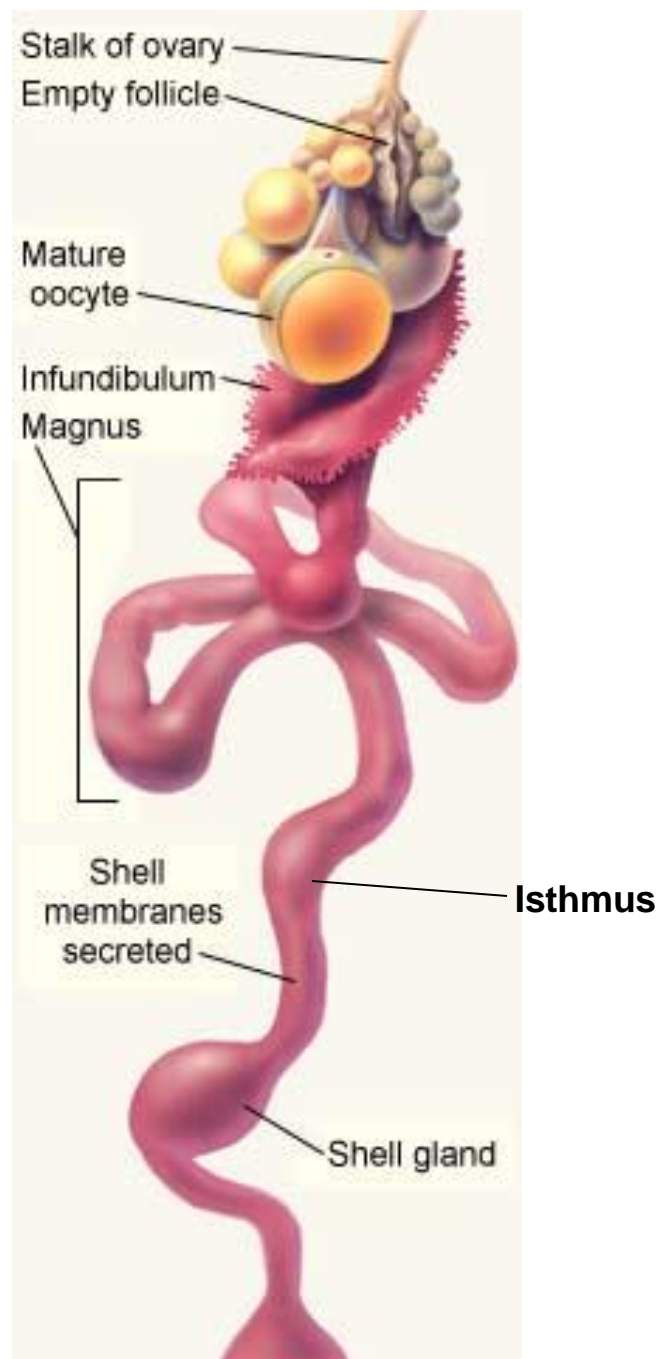
Yellow yolk

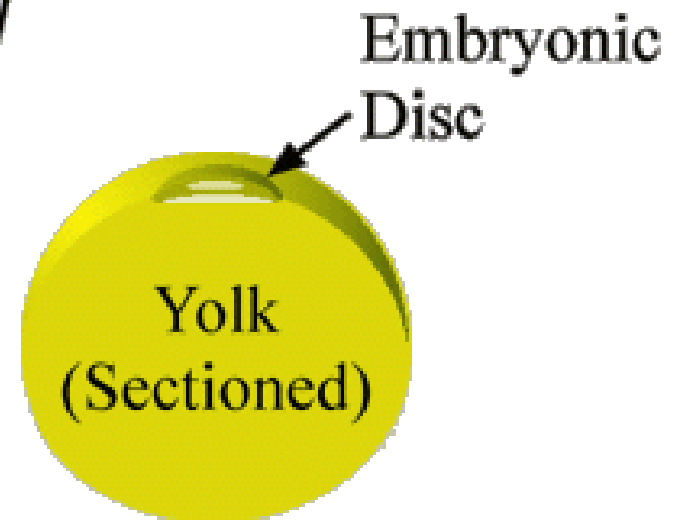
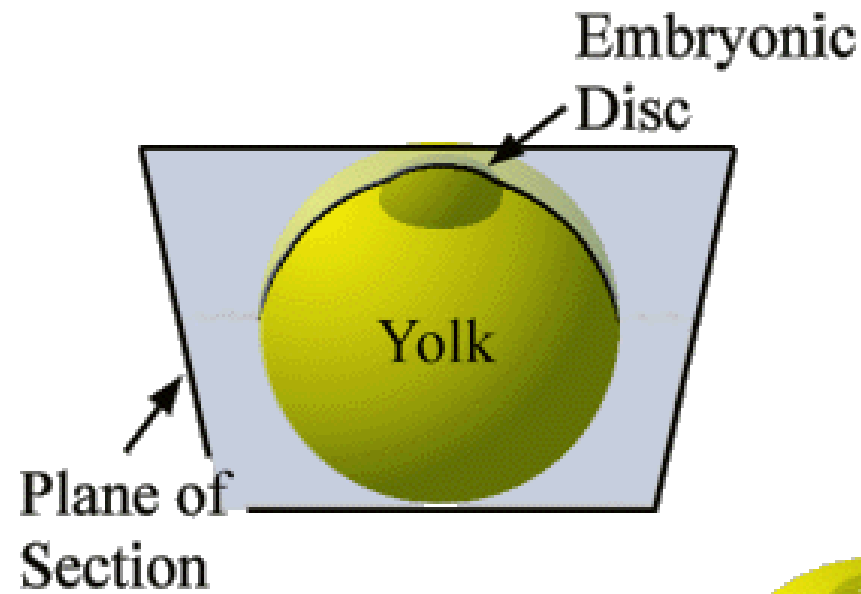
Chalaziferous layer

Shell membrane

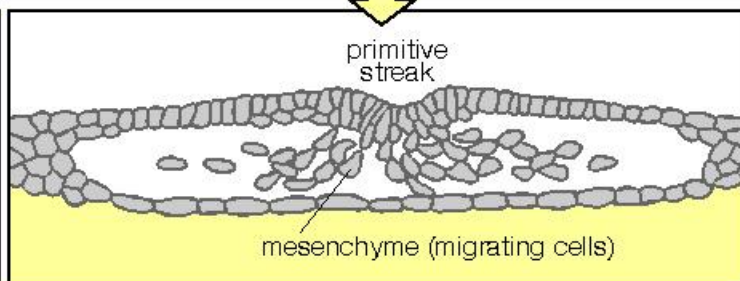
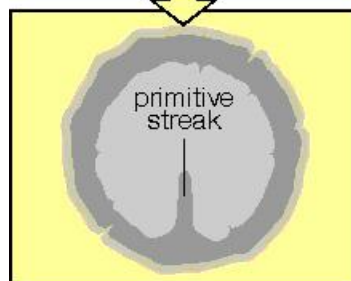
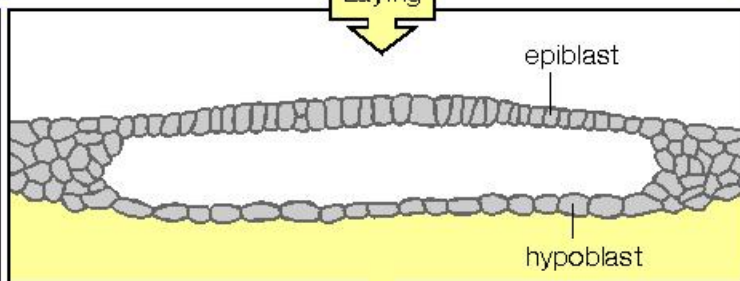
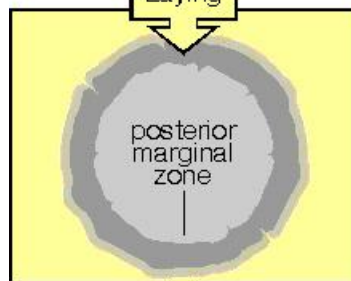
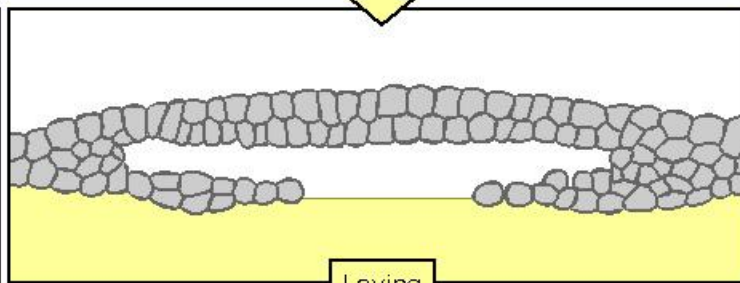
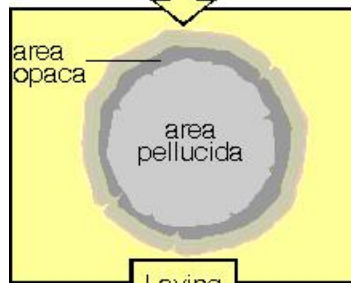
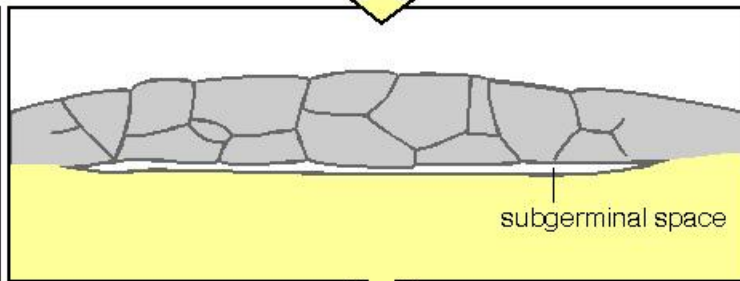
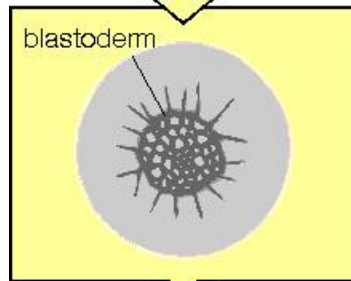
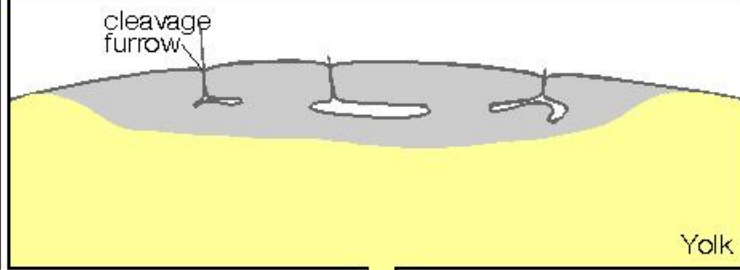
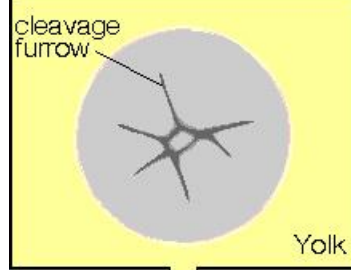
Latebra

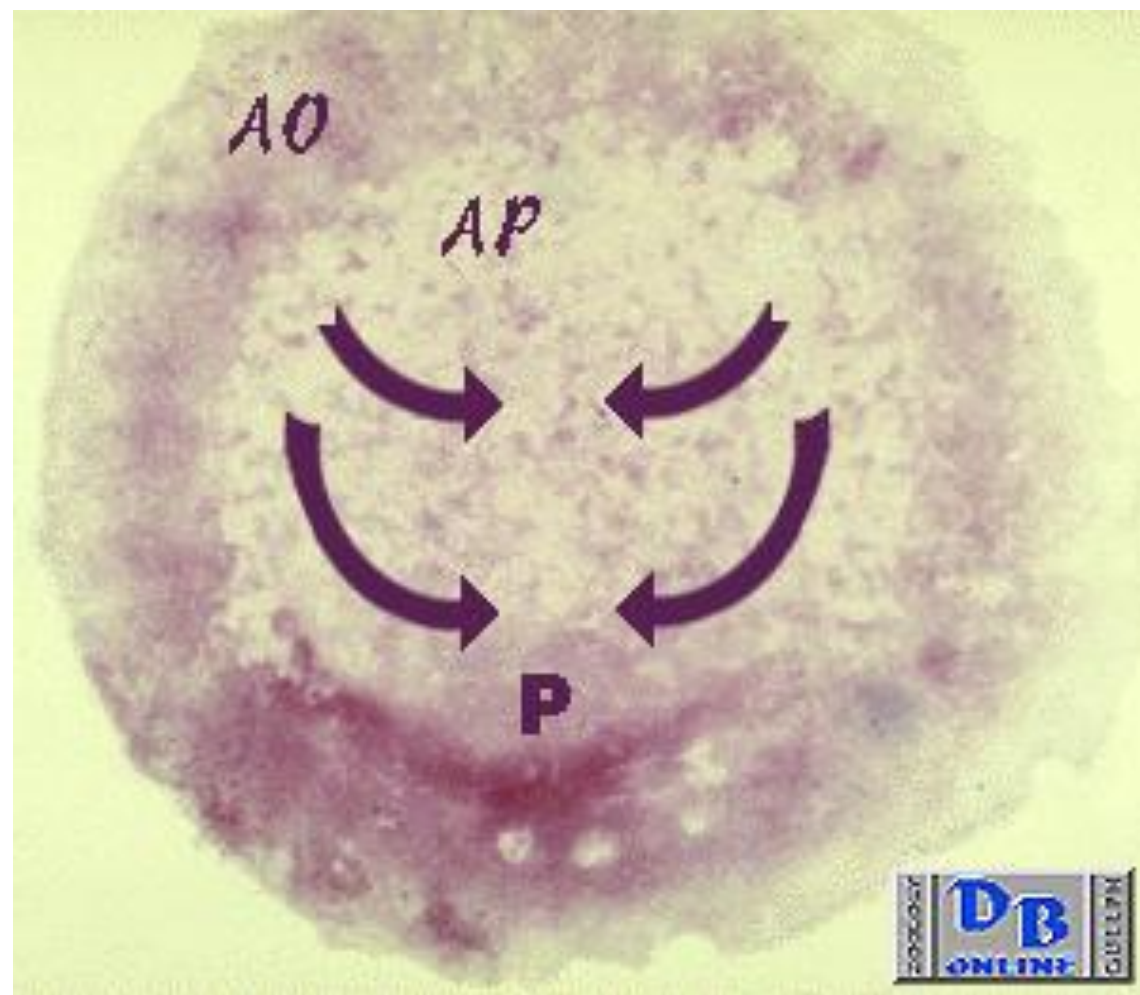
**Polylecithal**  
**telolecithal**



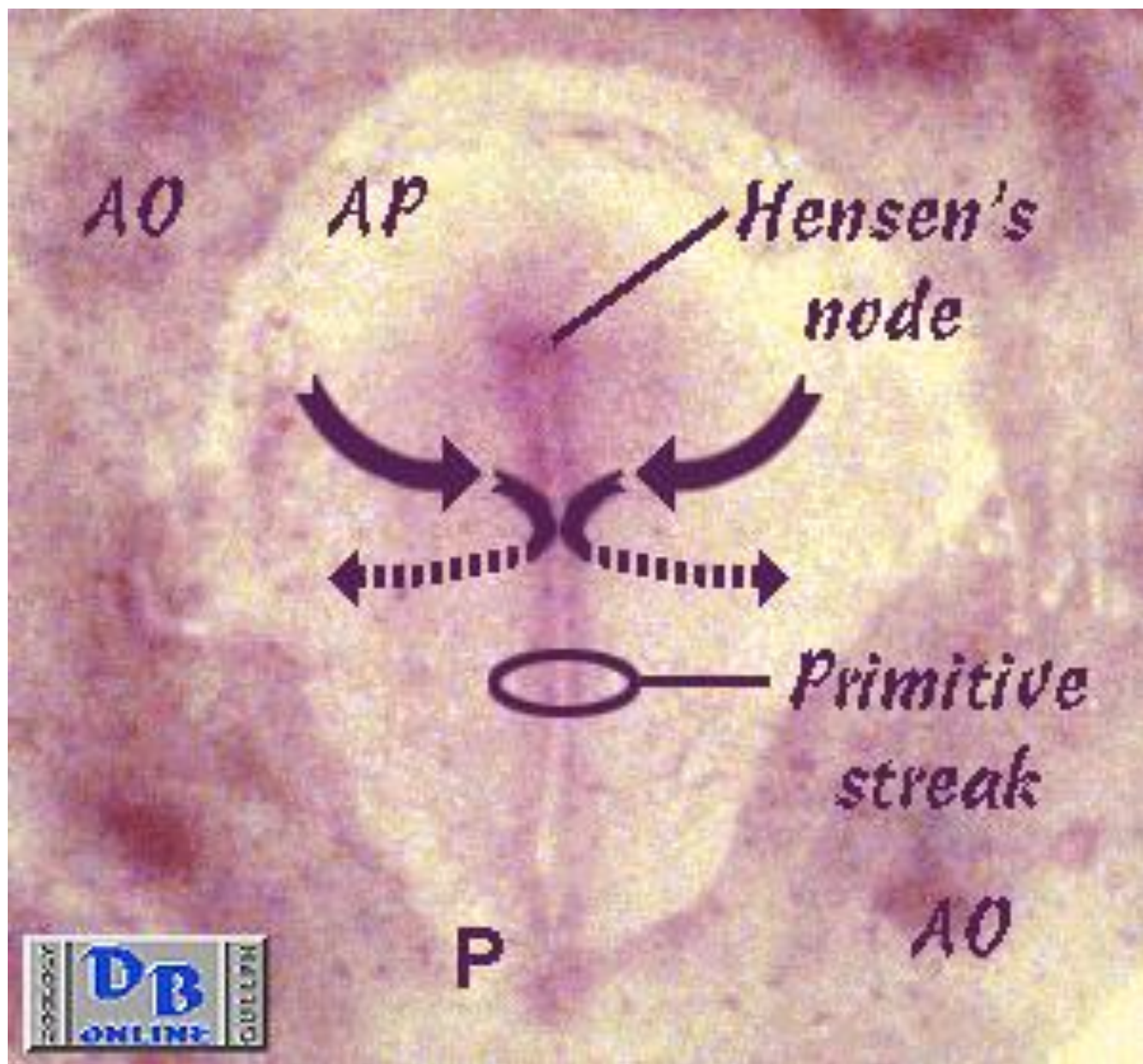


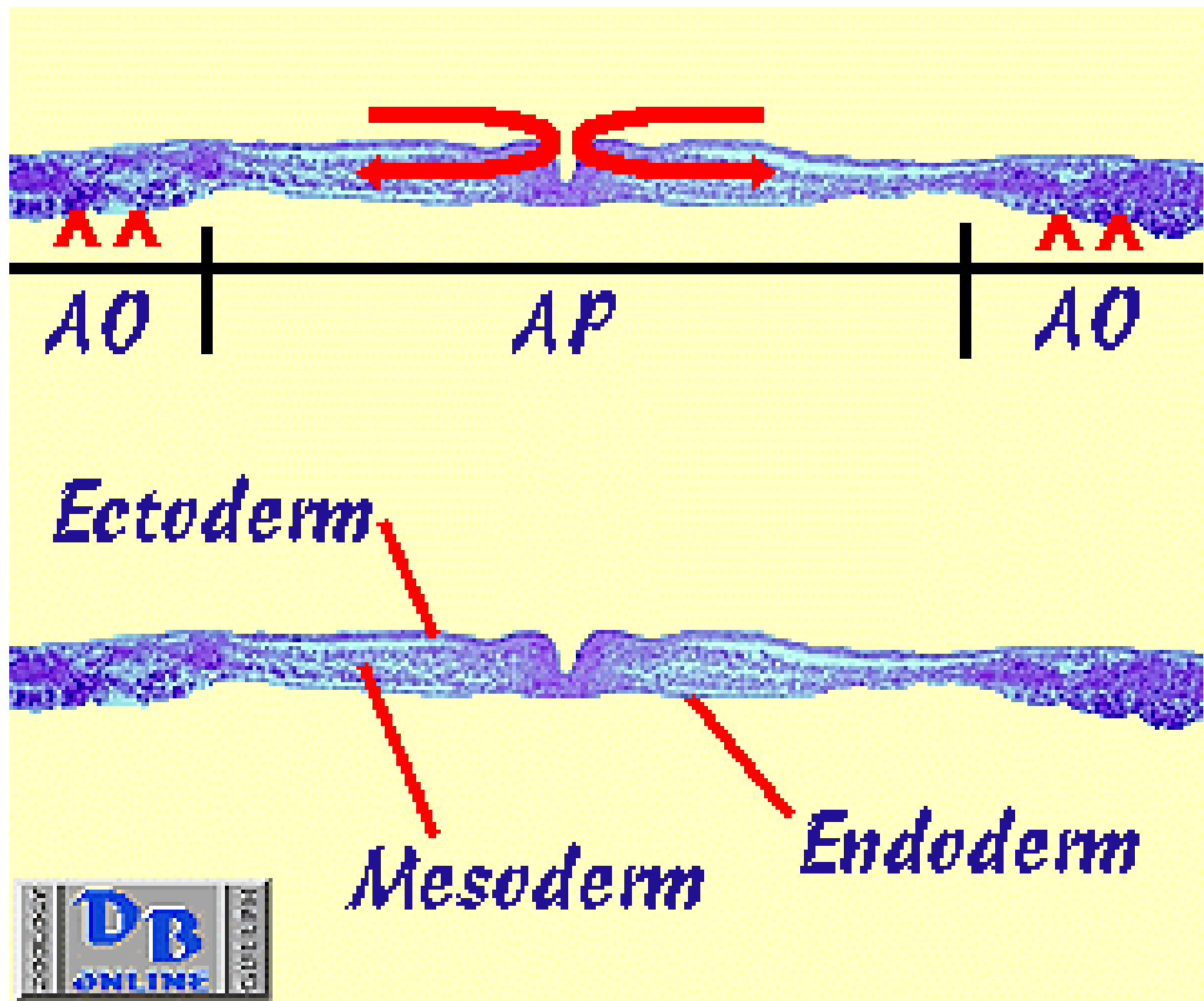
...



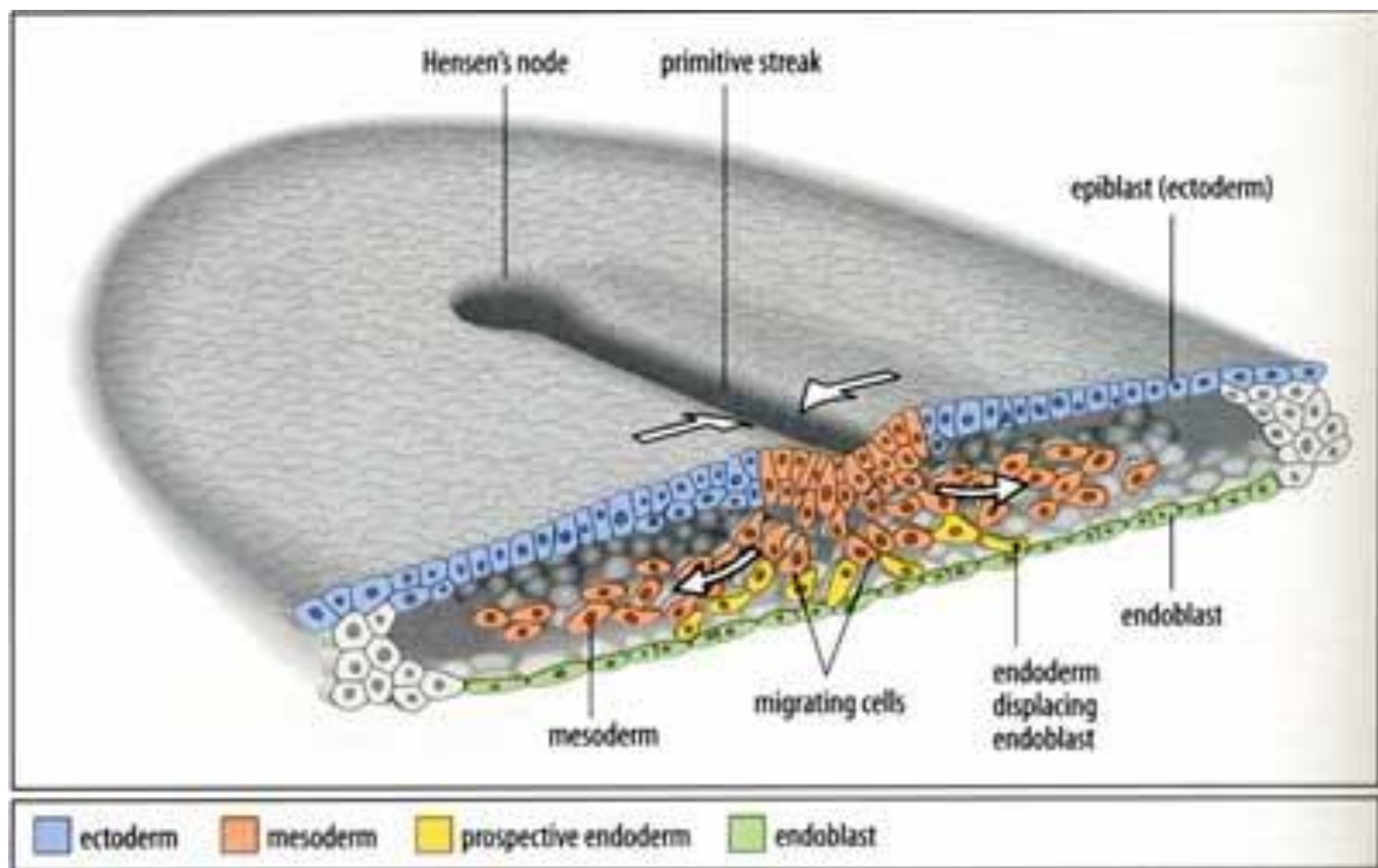


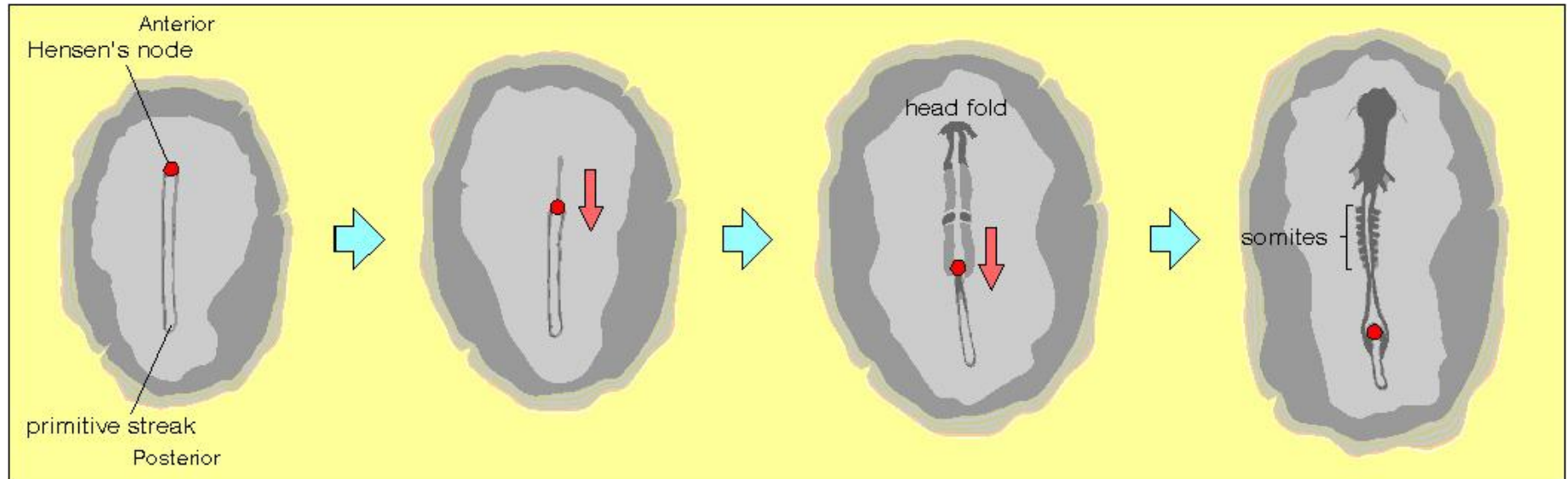


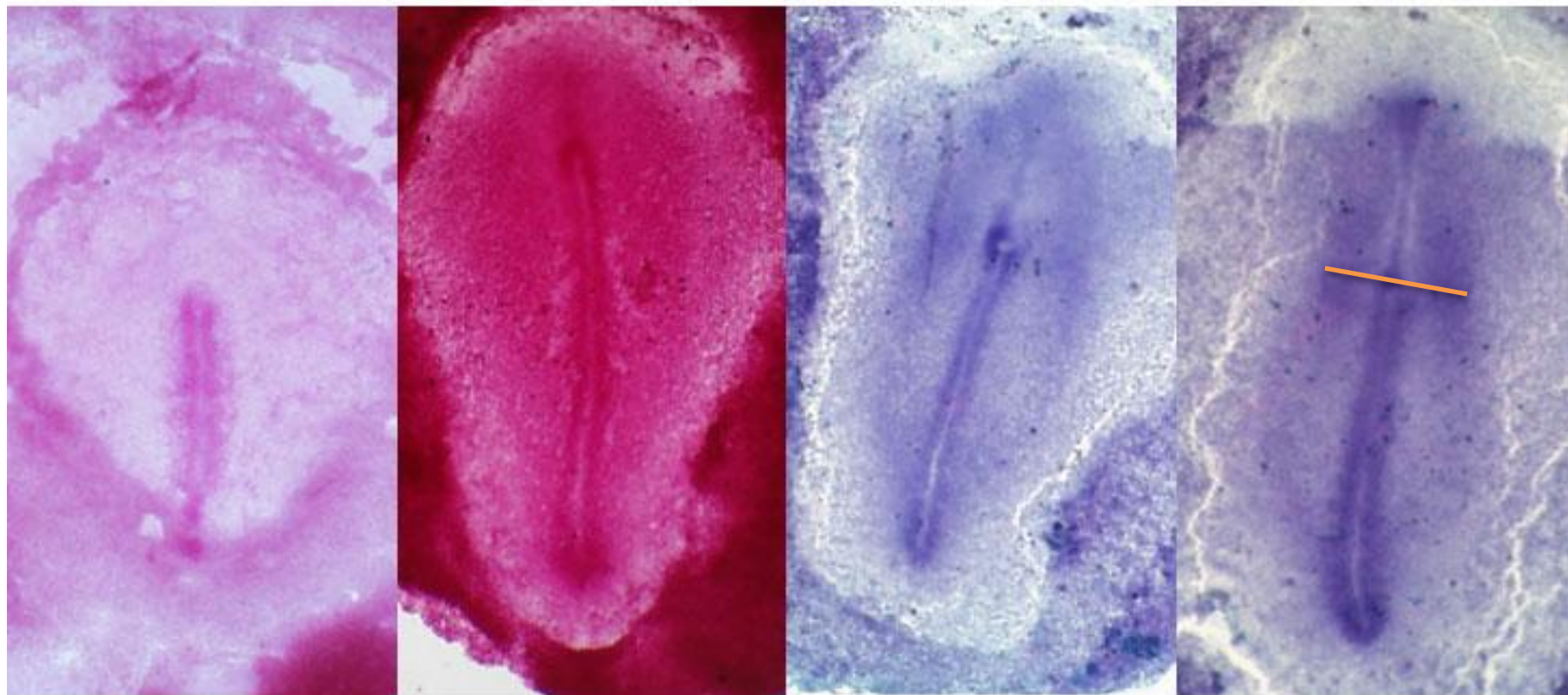


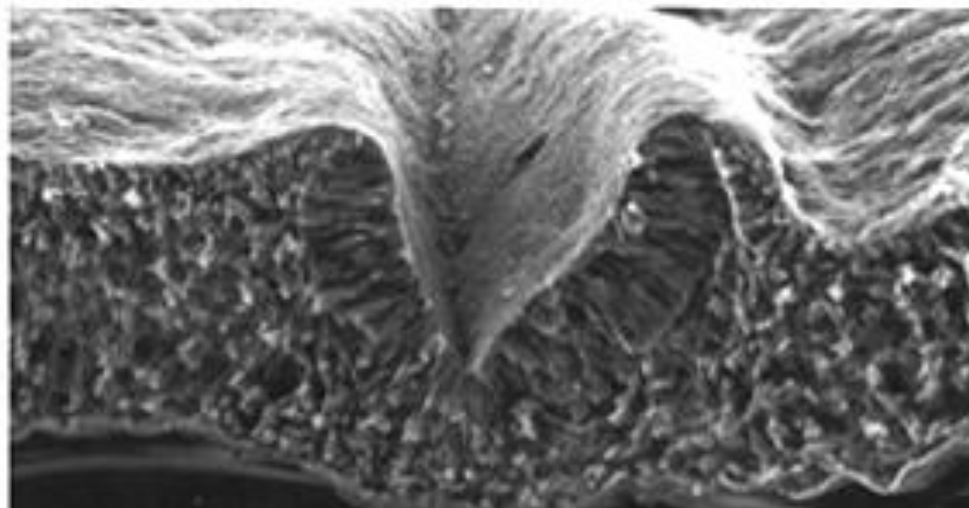
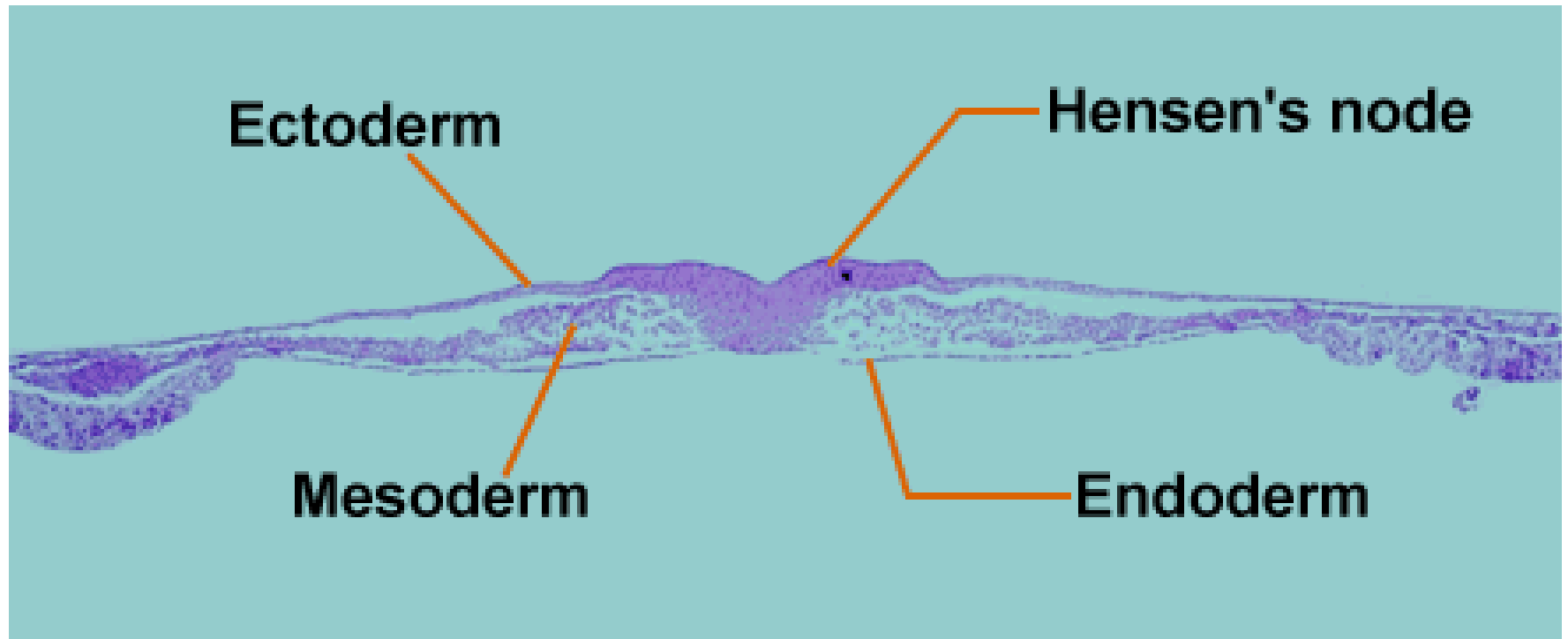




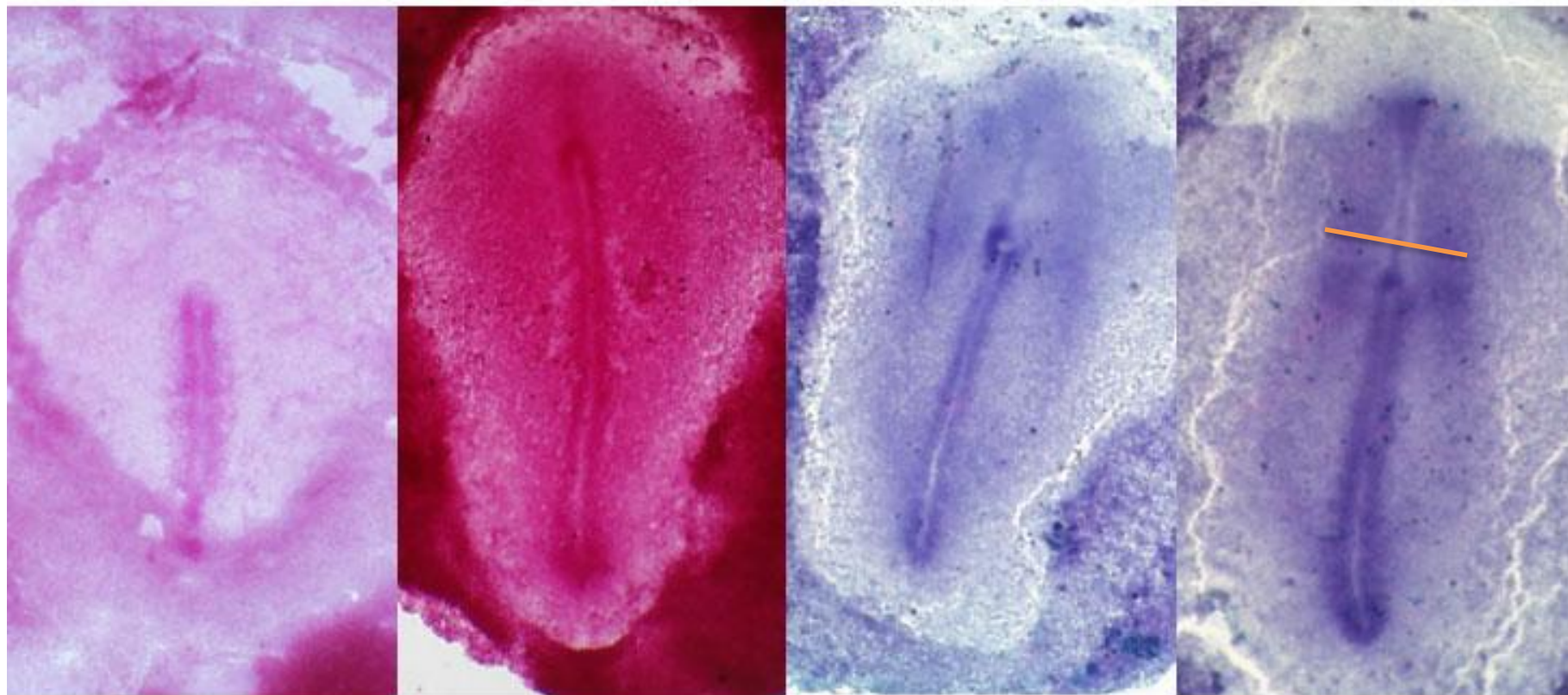


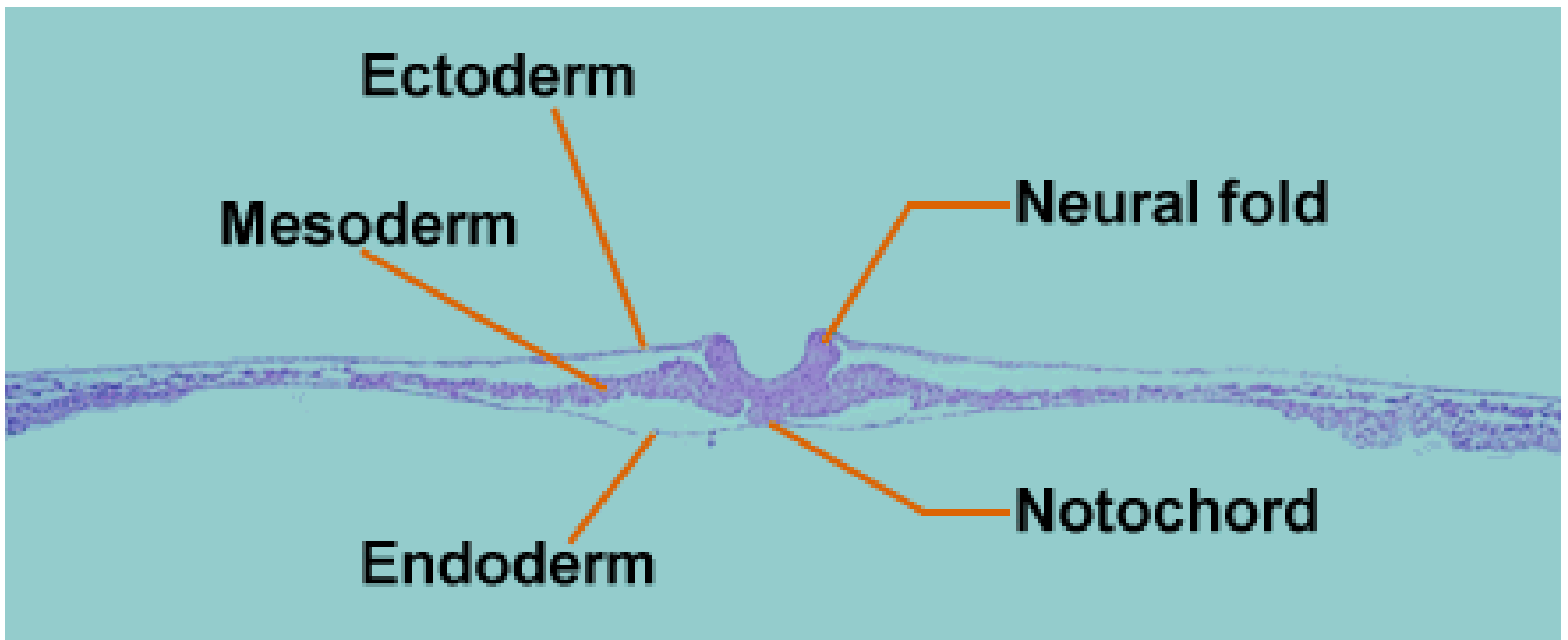




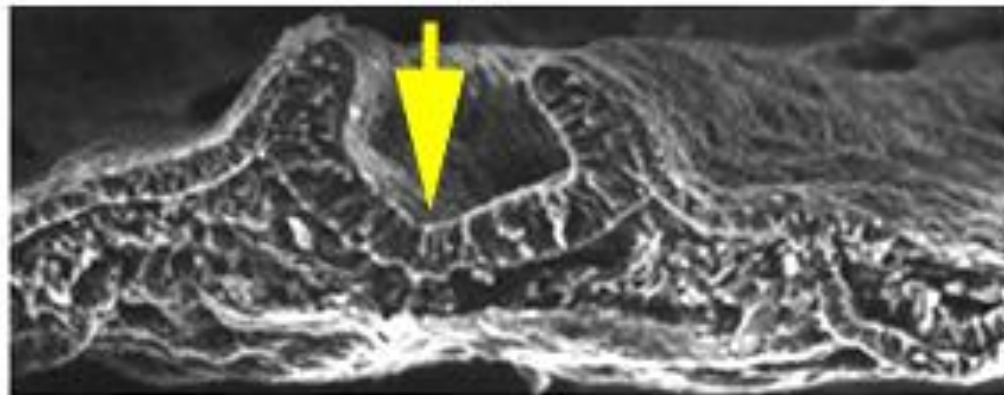




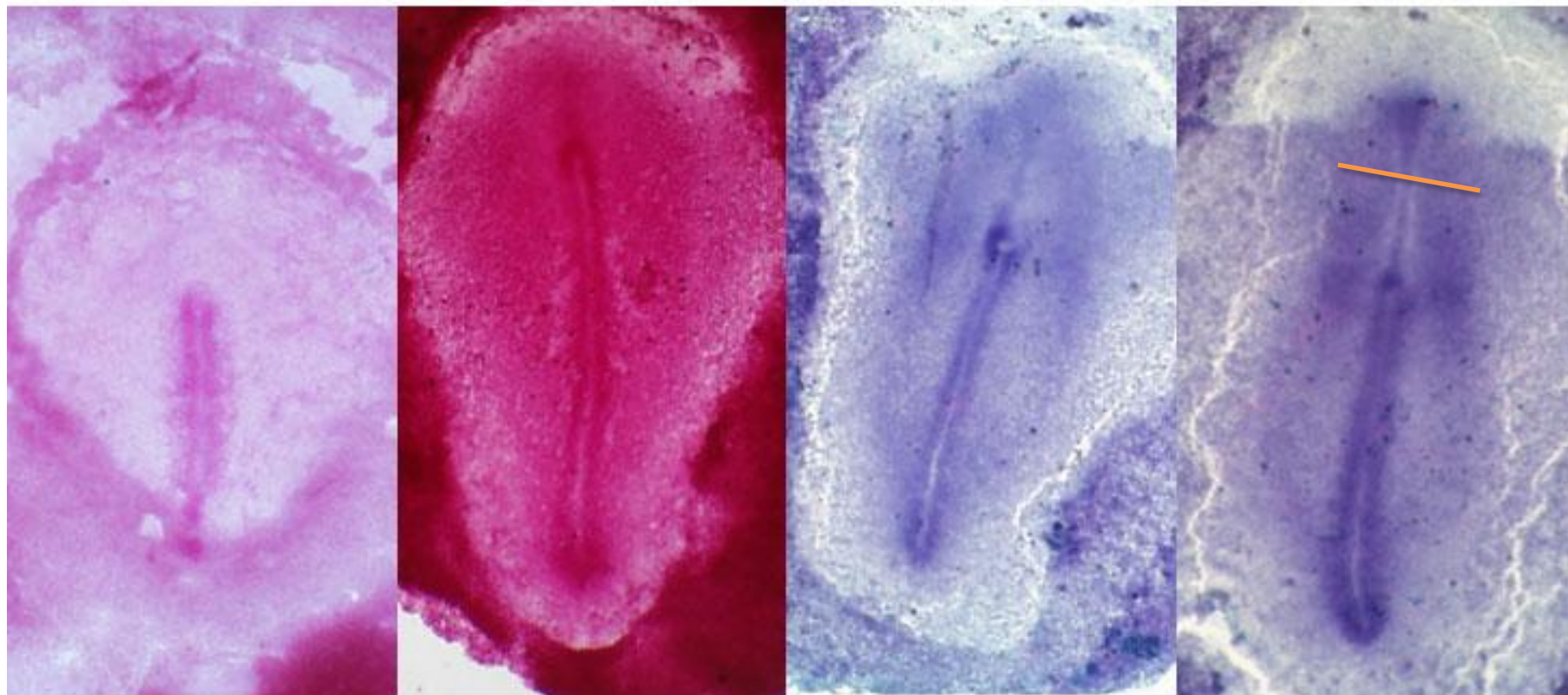


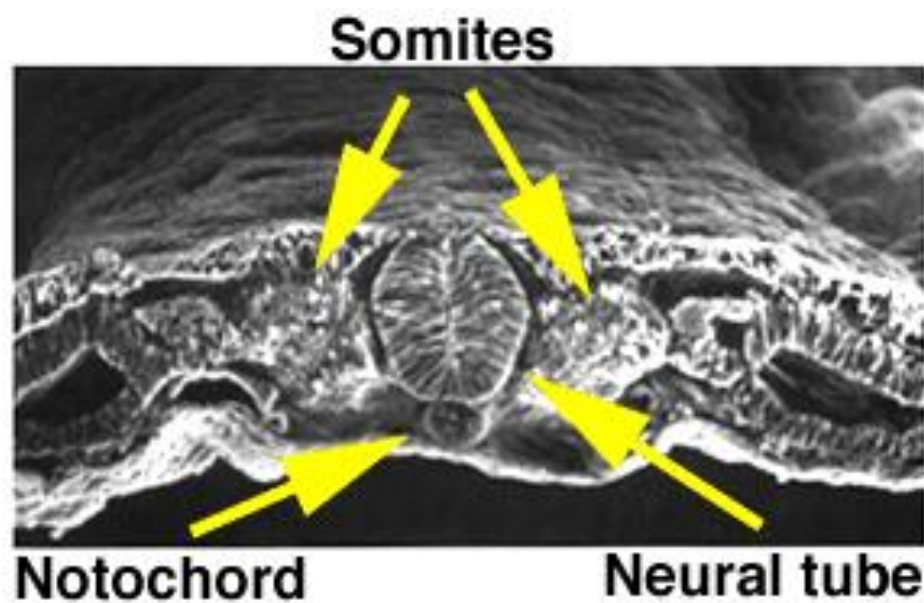
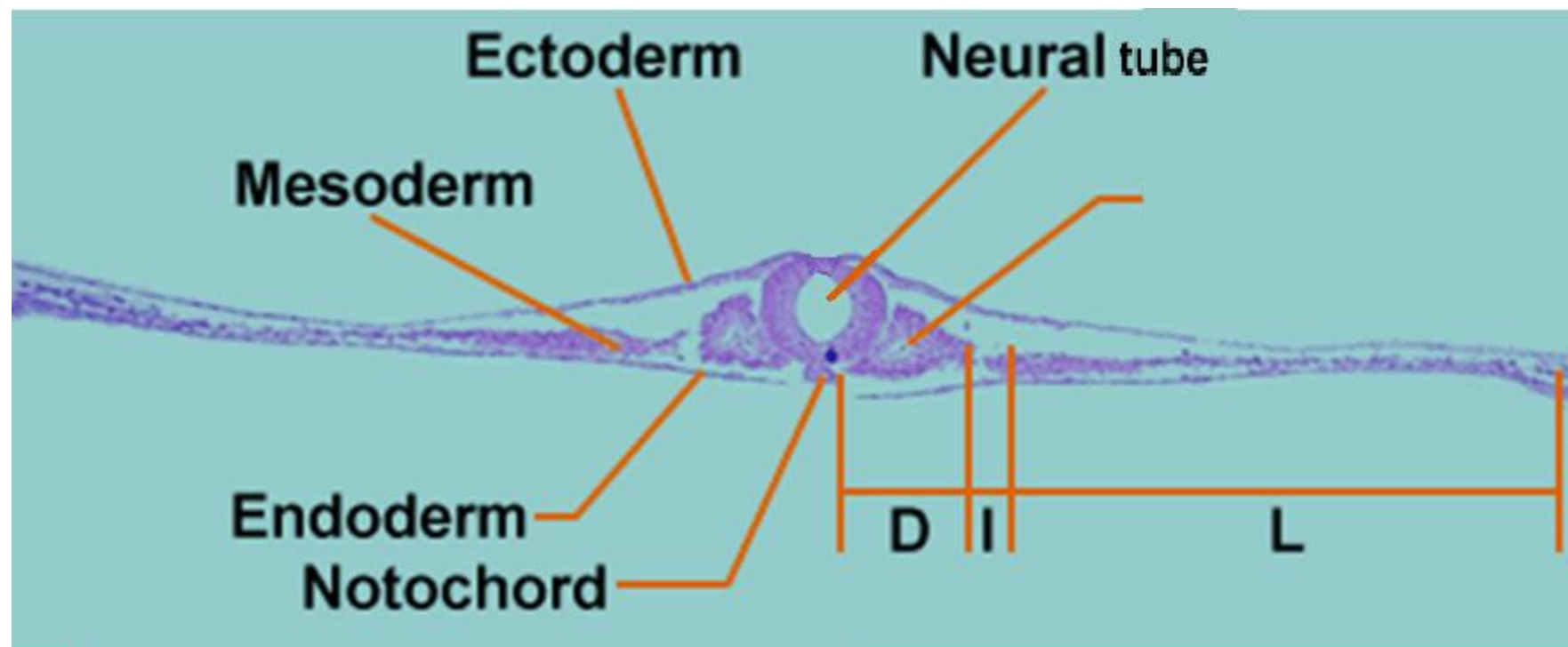


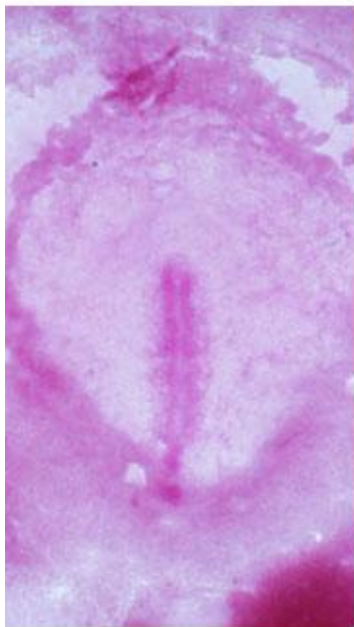
**Neural groove**







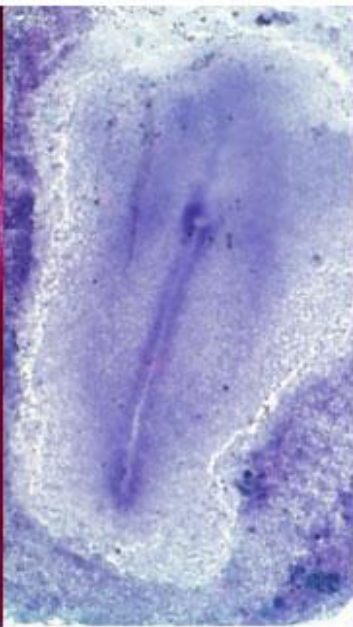




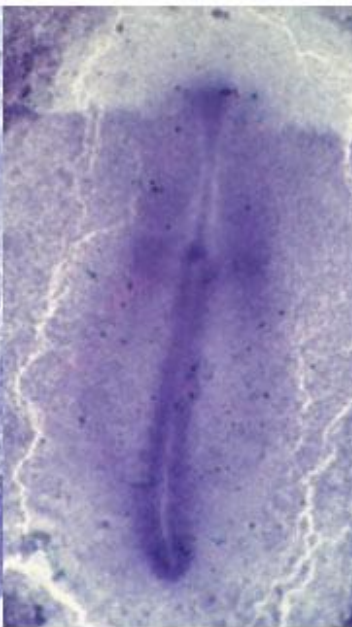
3



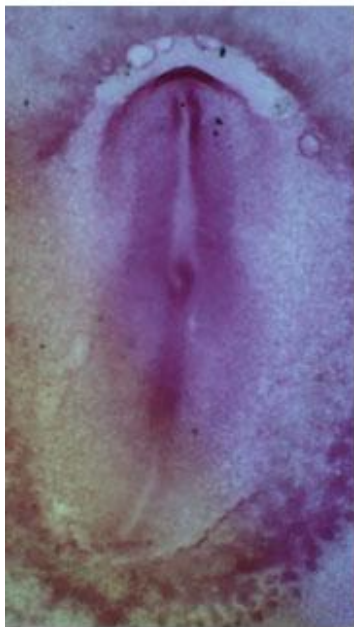
4



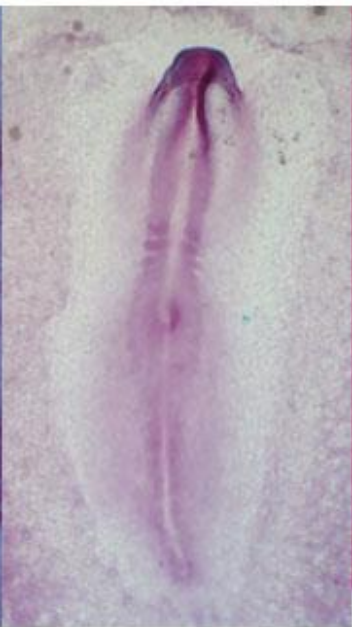
5



6



7

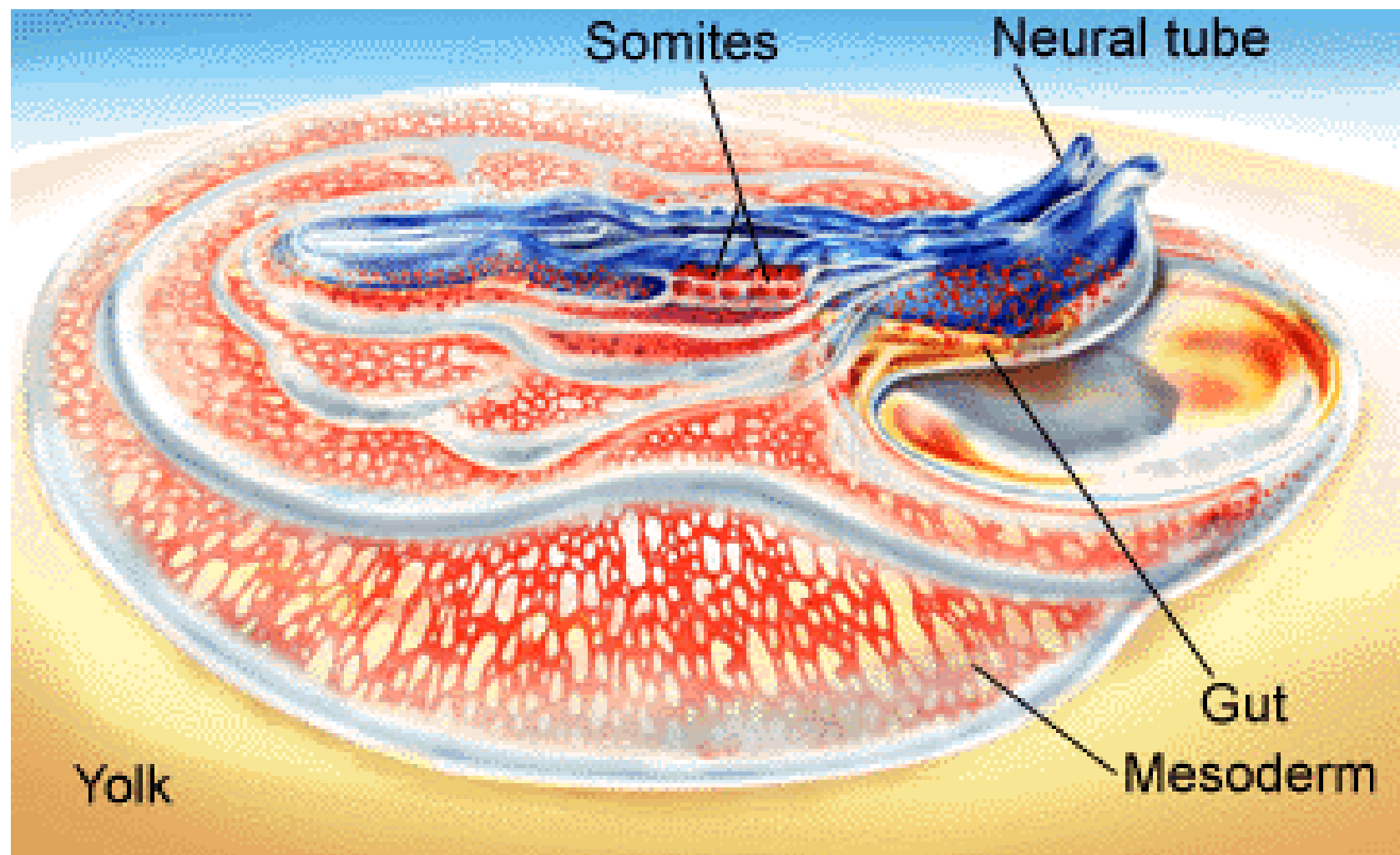


8-

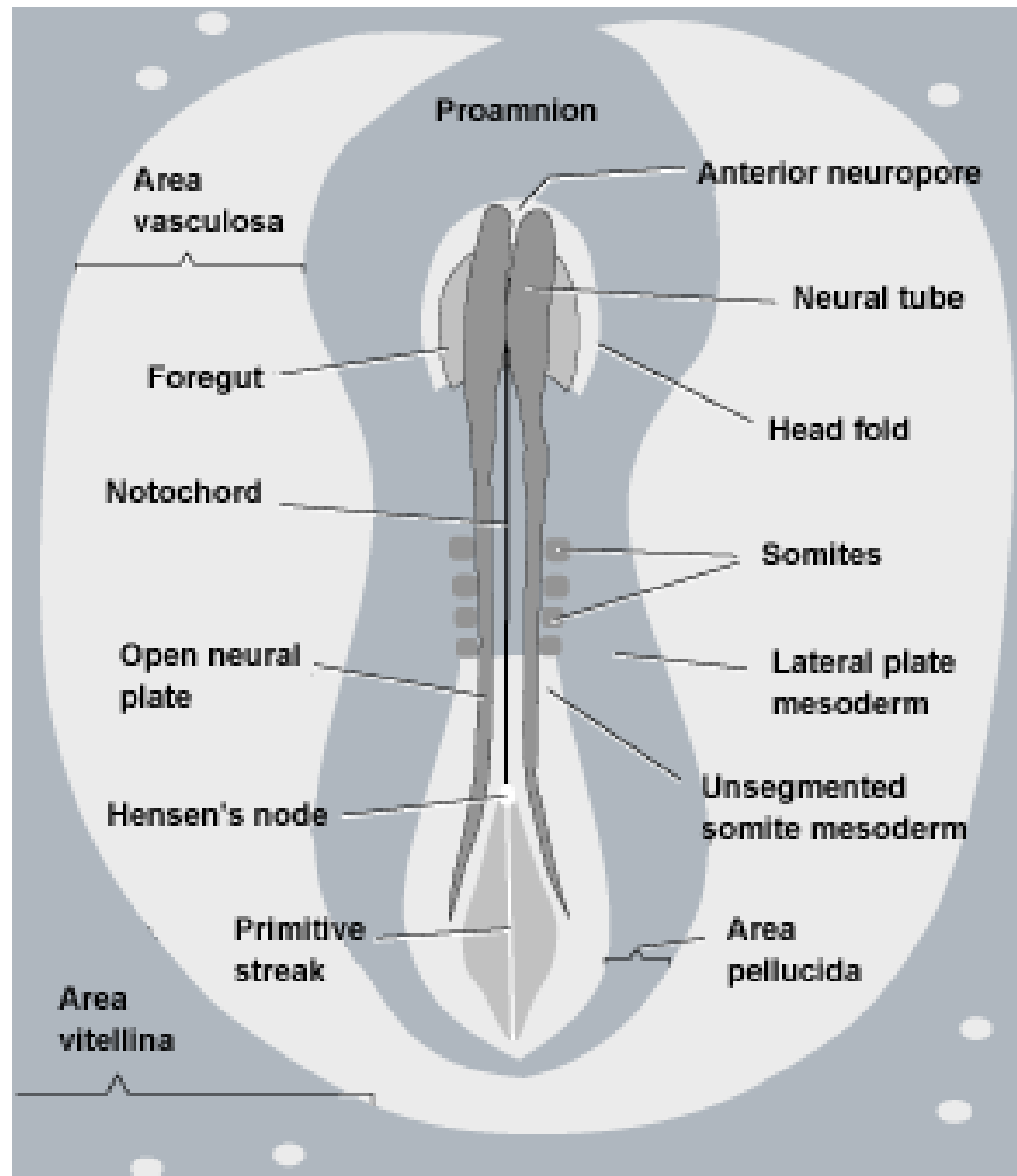


8

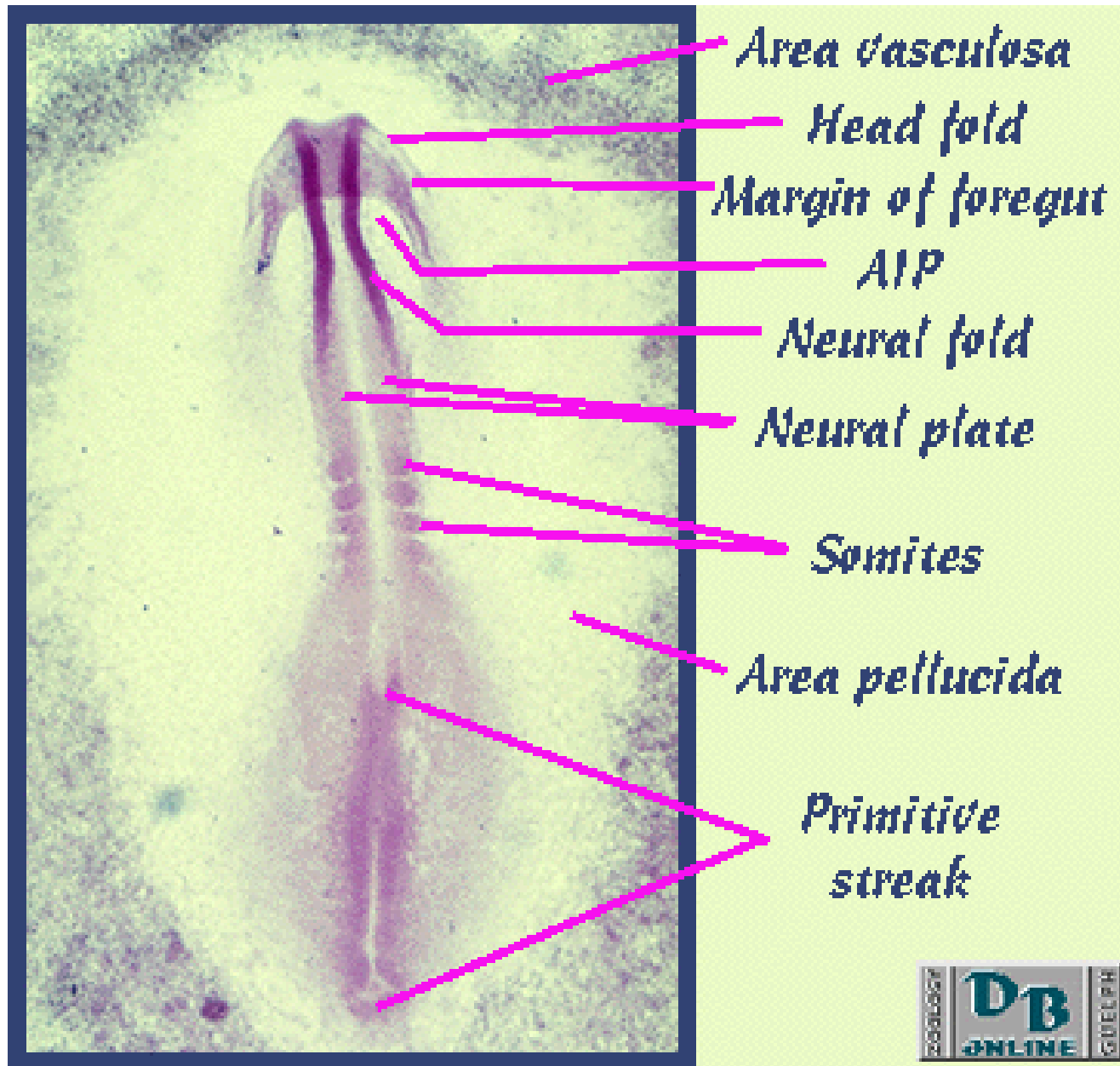




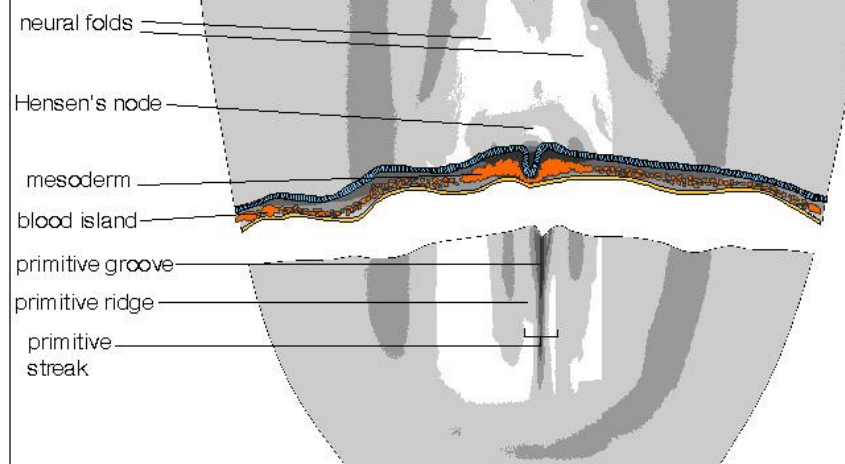
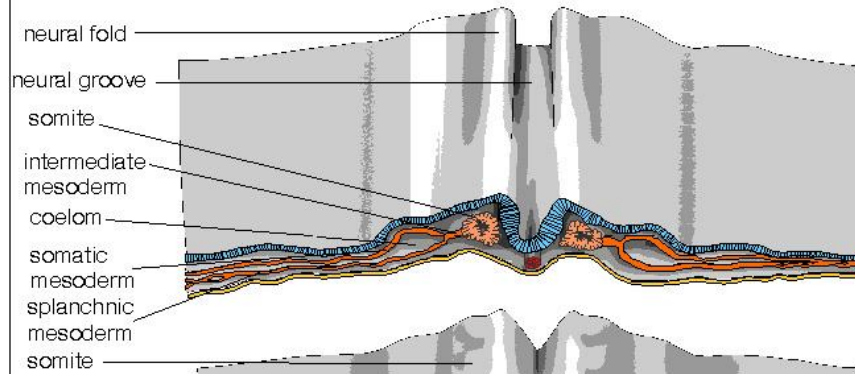
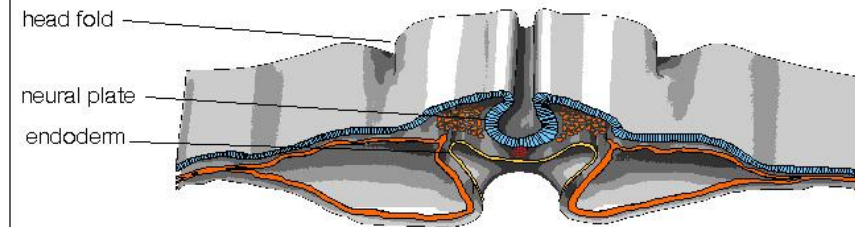
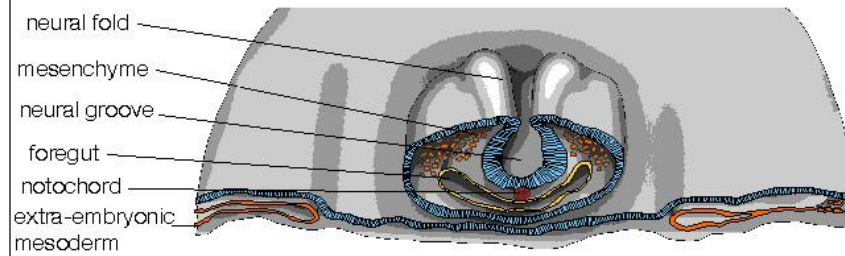
# Chick embryo 24 hours ( whole mount )

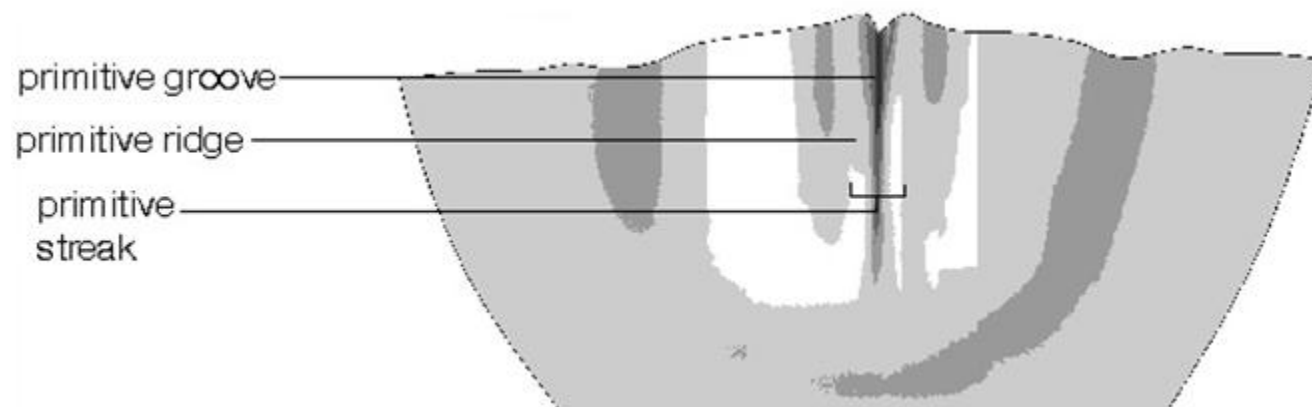


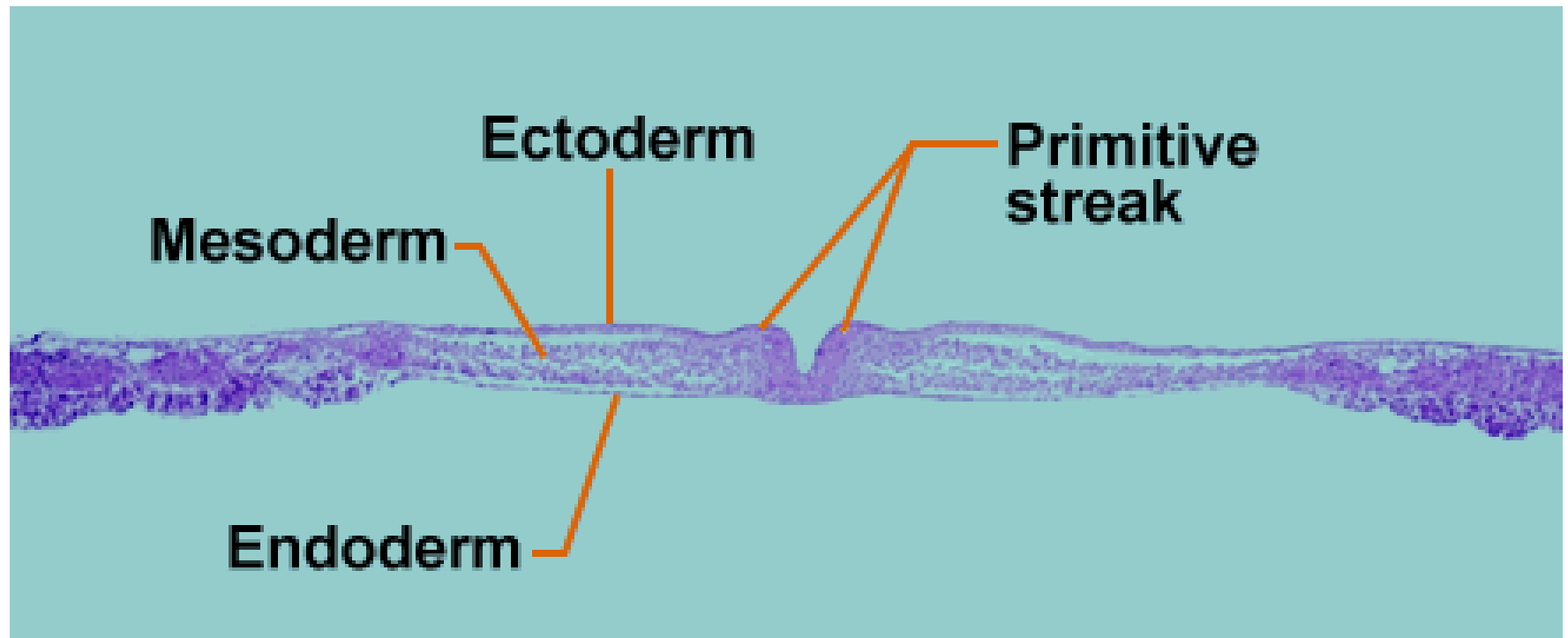
# Chick embryo 24 hours ( whole mount )











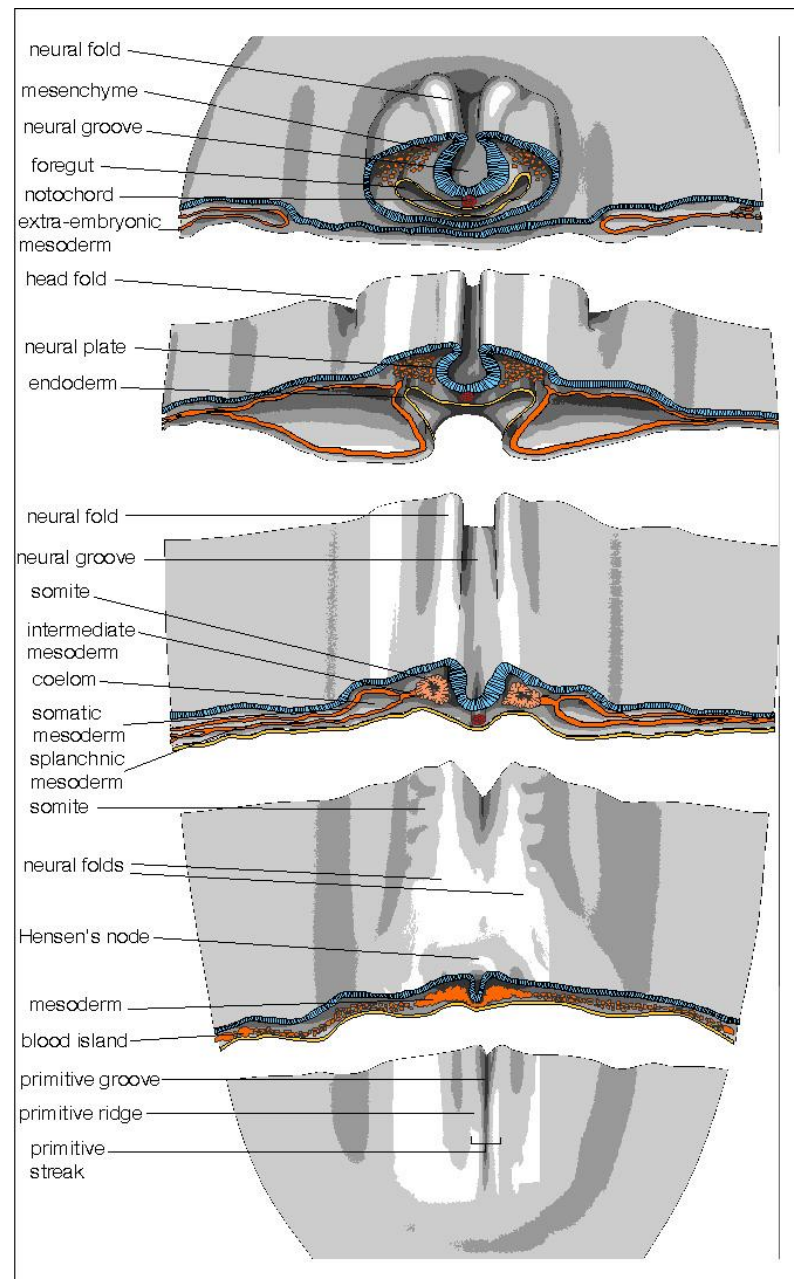
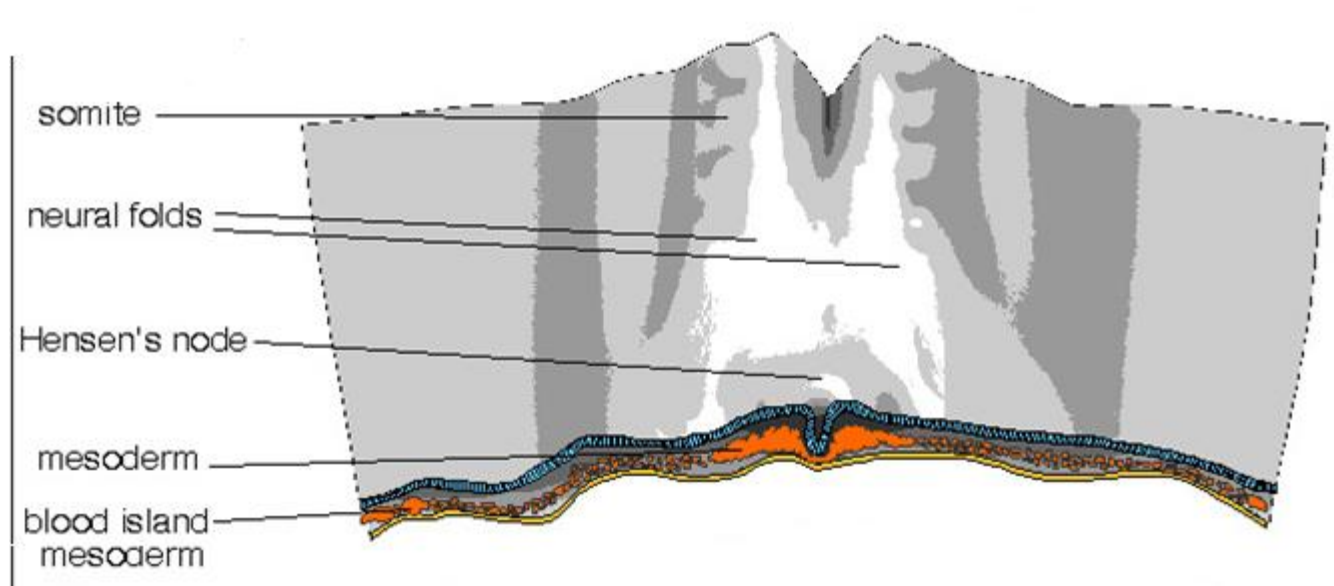
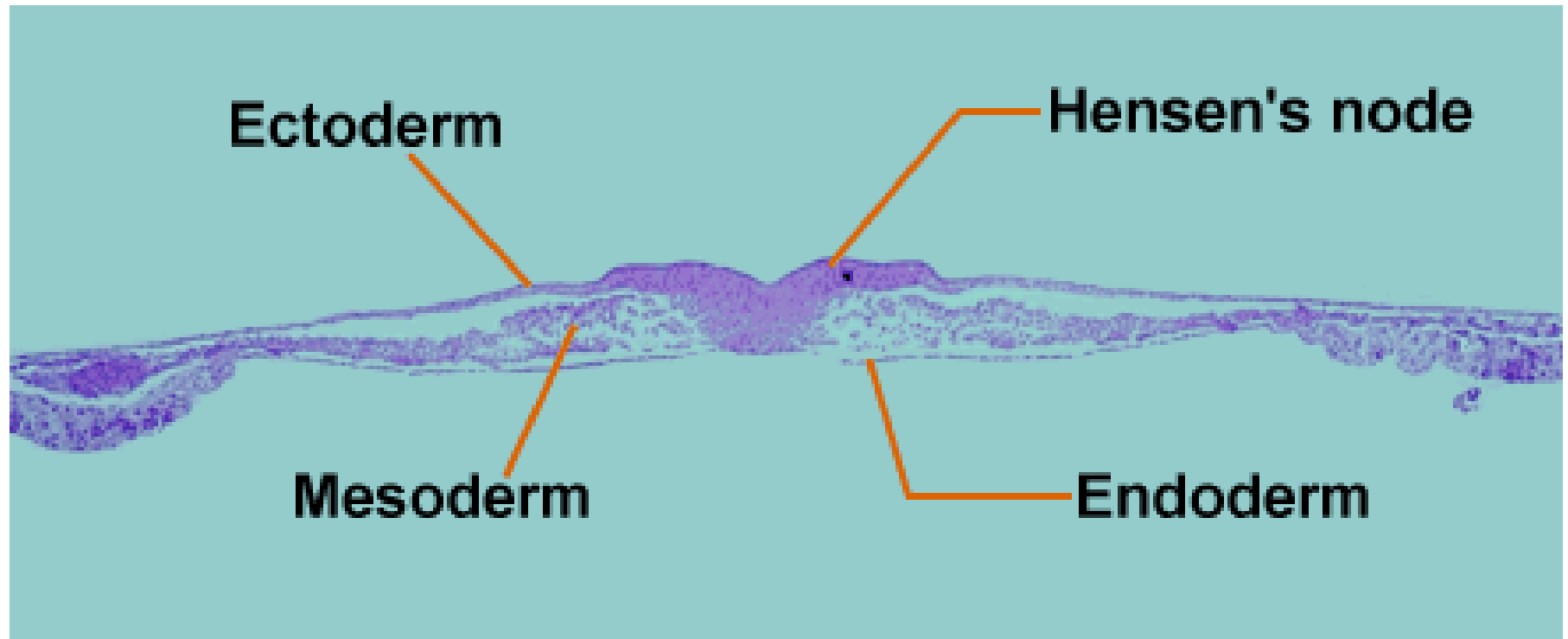


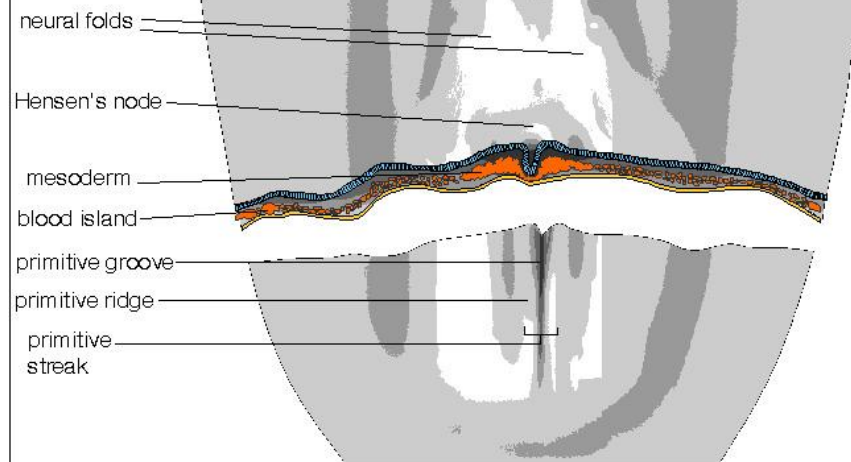
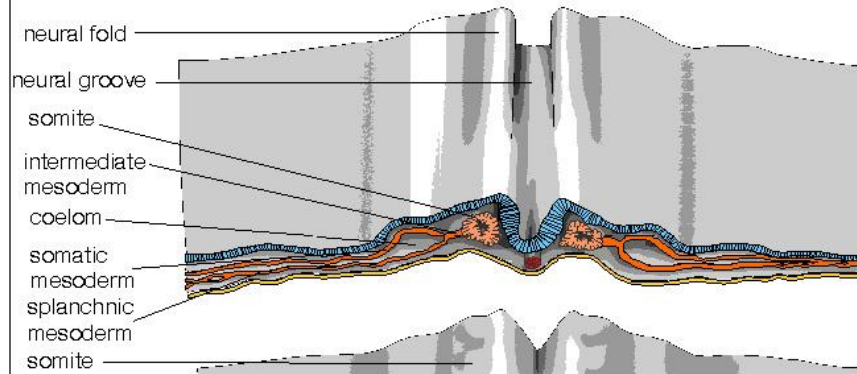
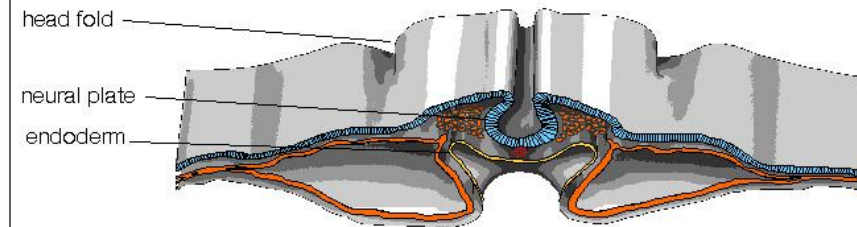
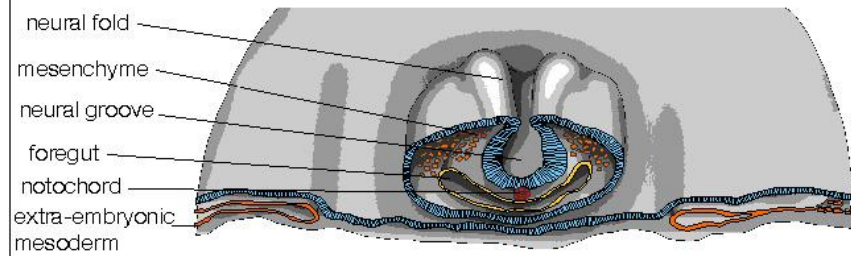
Diagram of whole mount of Chick embryo 24

# Cross section of Chick embryo 24 hours through the Hansen node

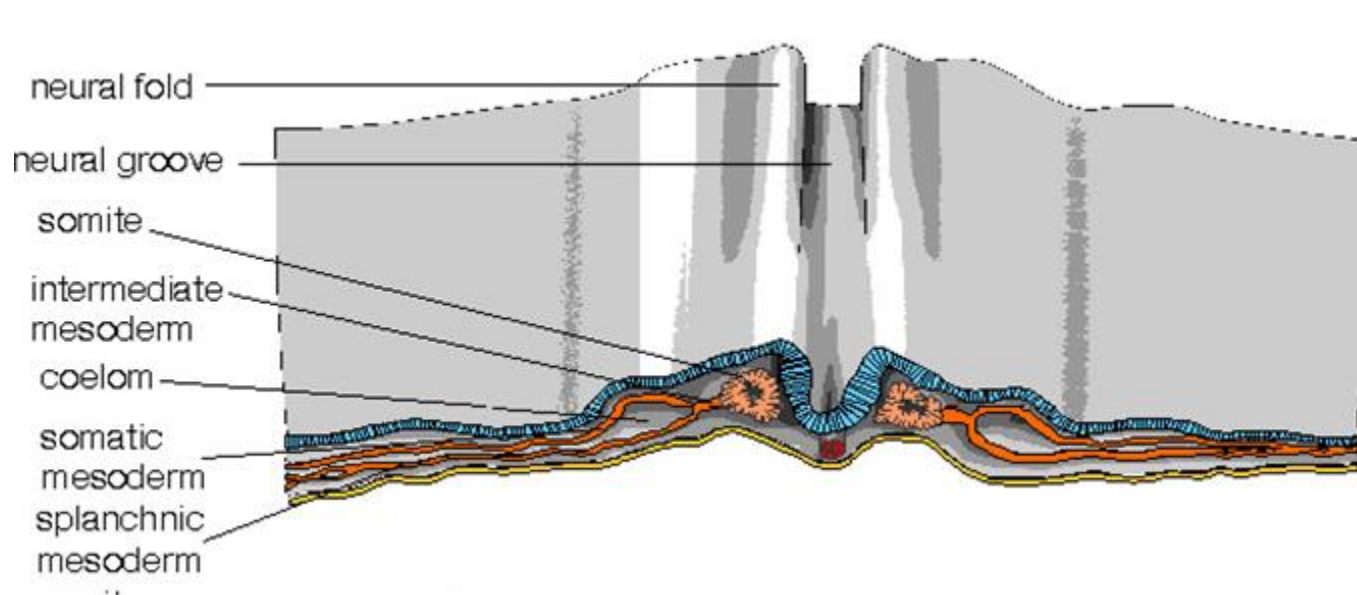


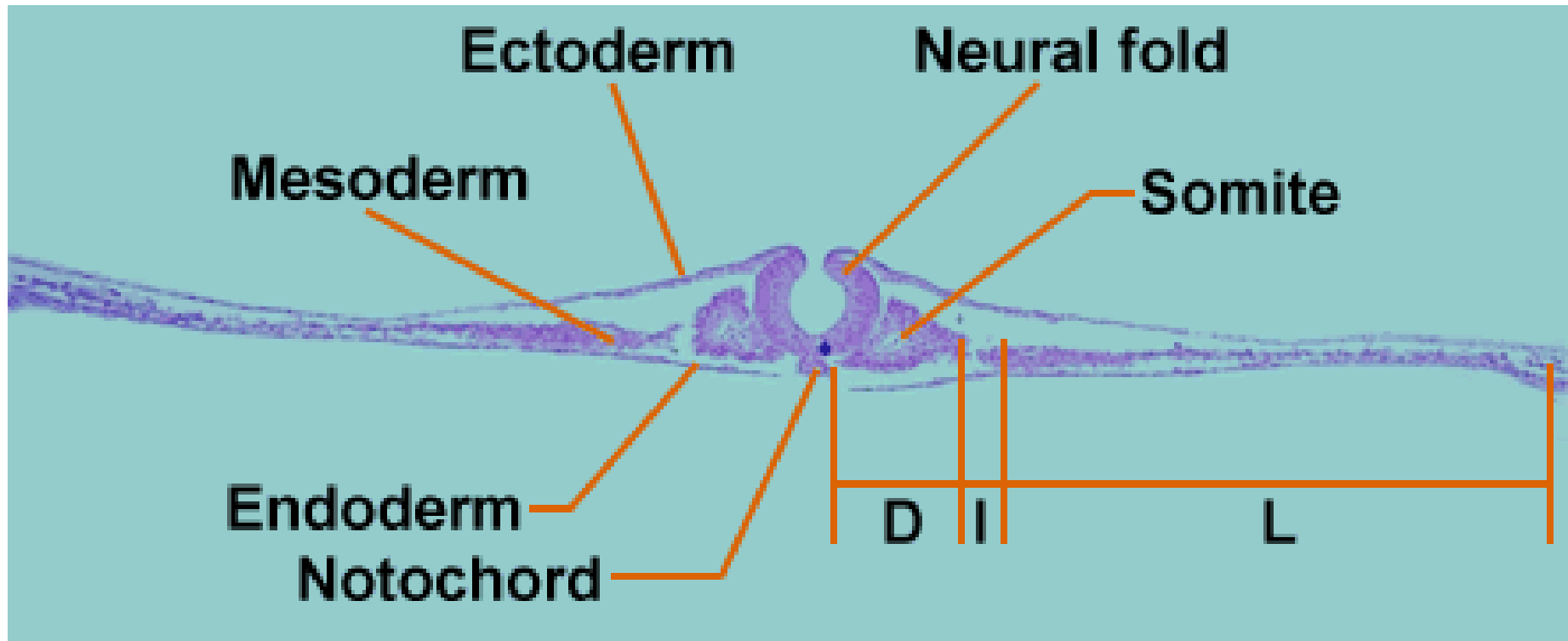


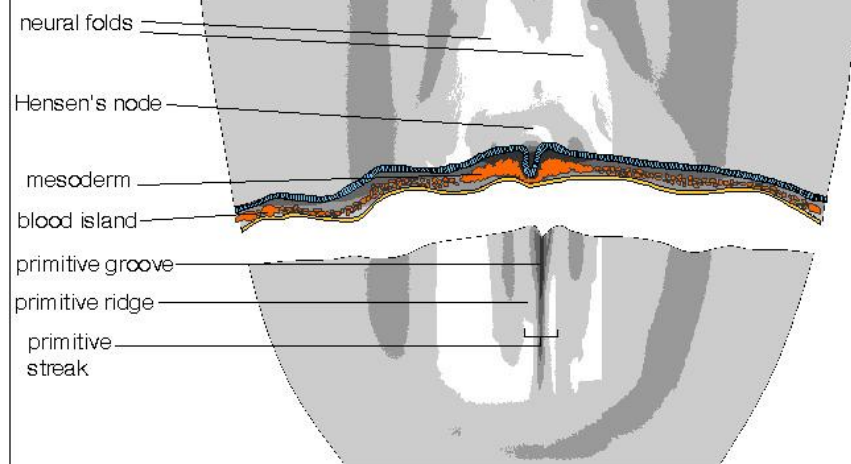
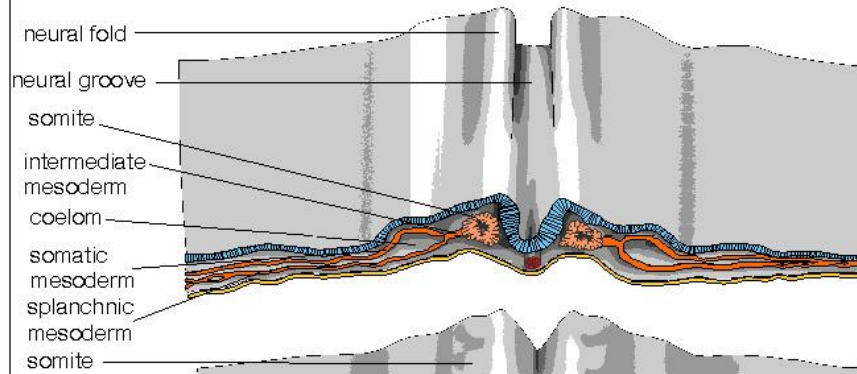
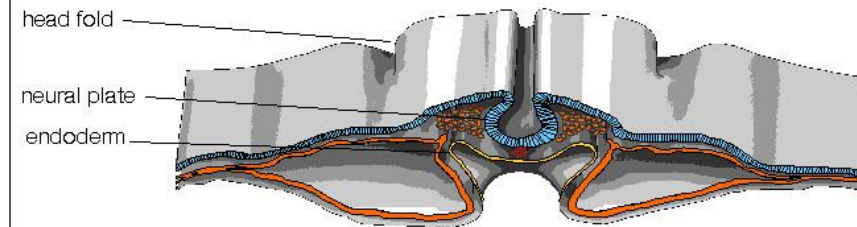
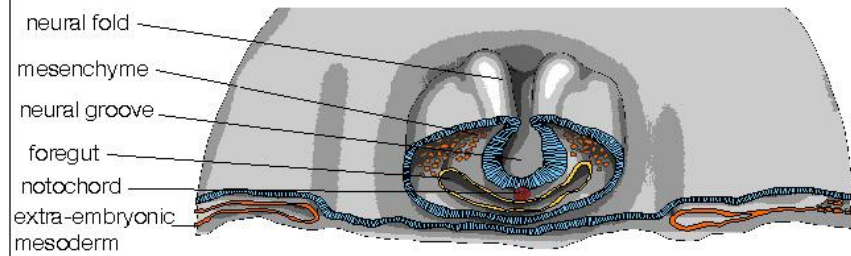




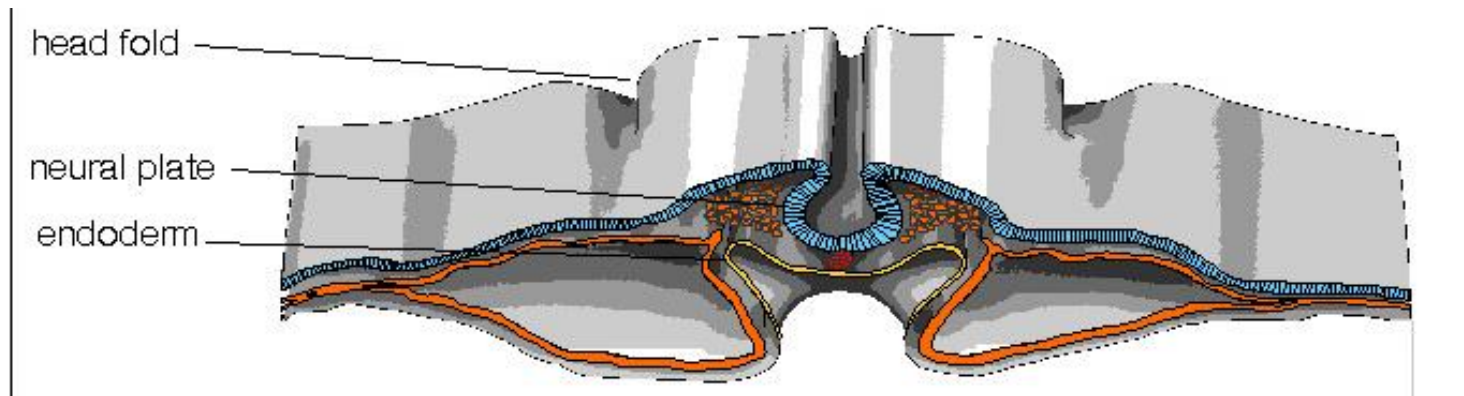
# Cross section of Chick embryo 24 hours through the somite region and neural groove

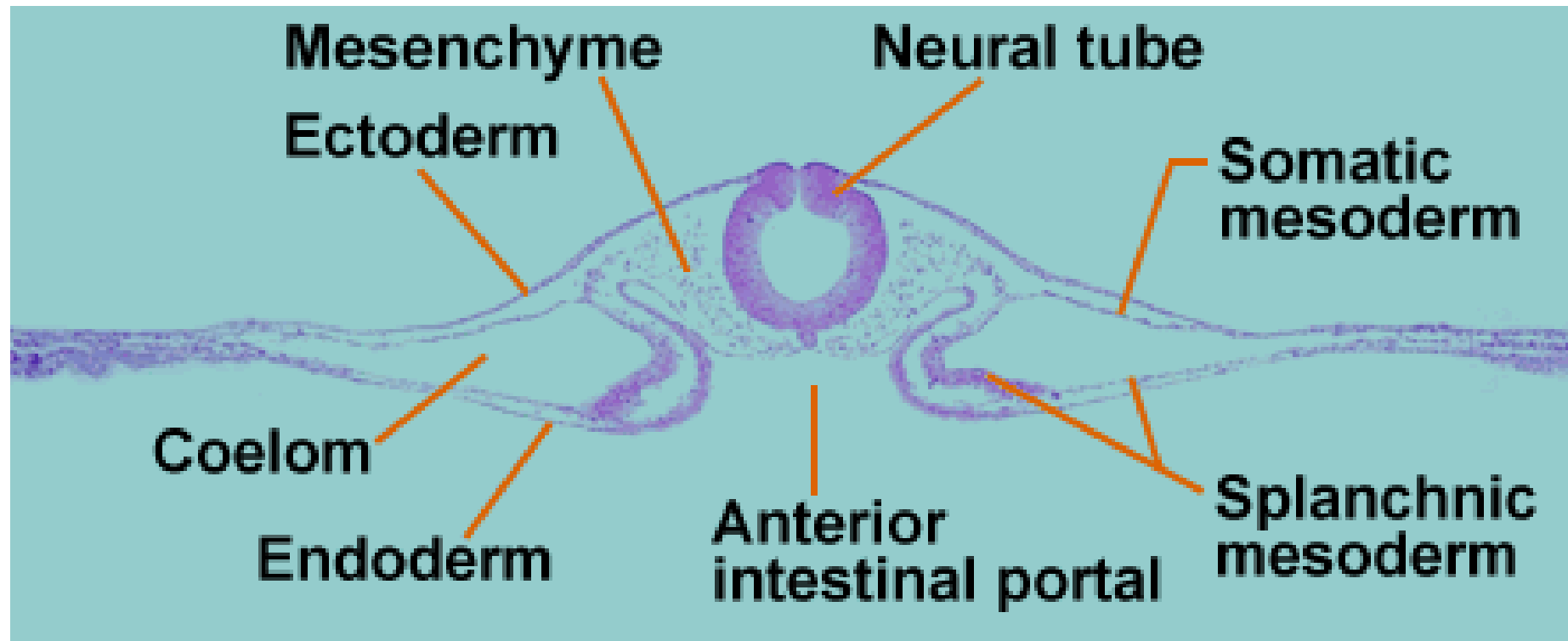




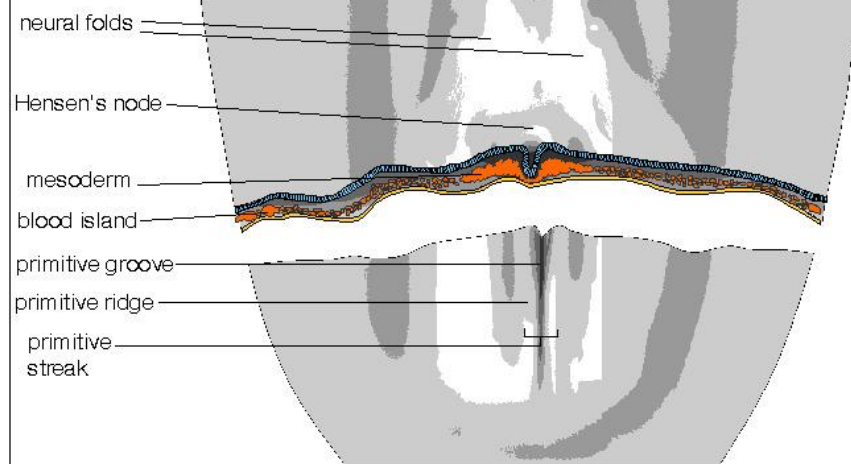
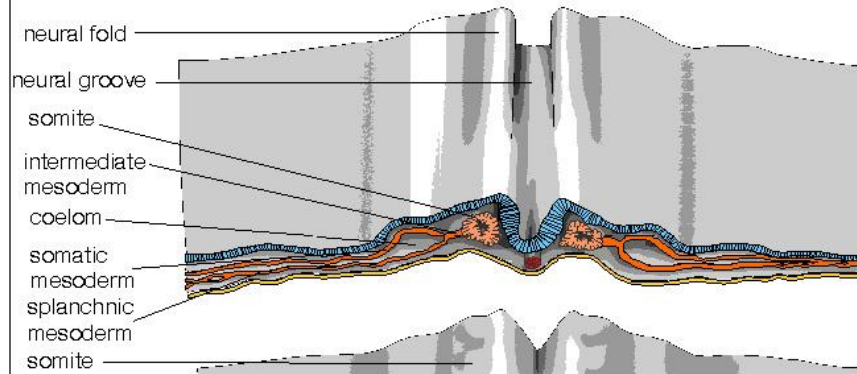
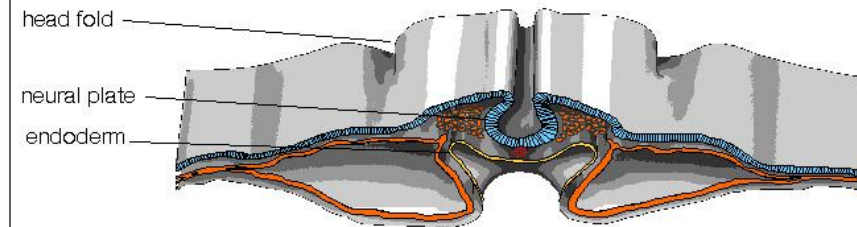
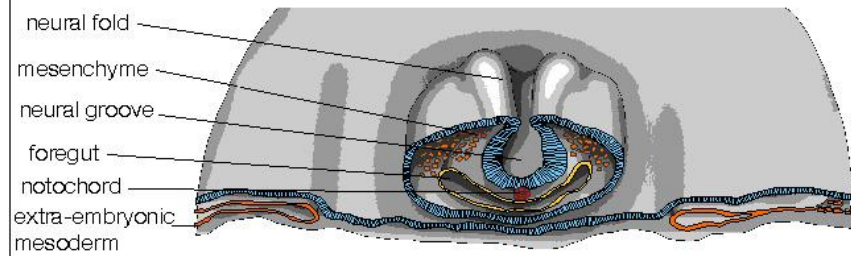


# Cross section of Chick embryo 24 hours though the beginning of head fold

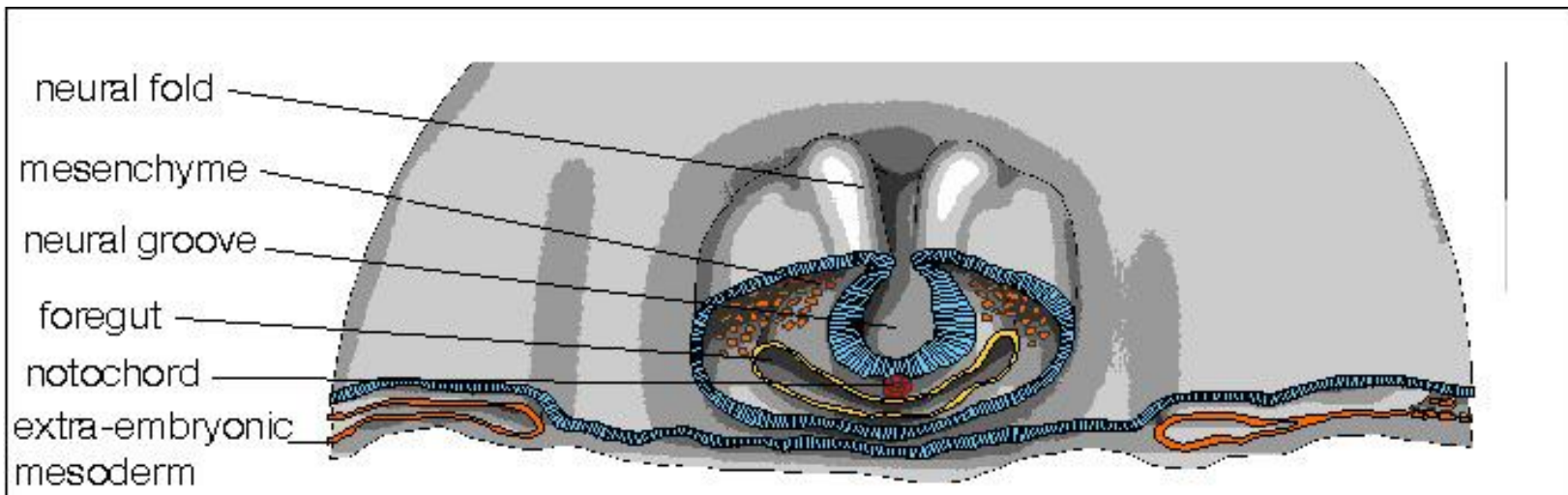


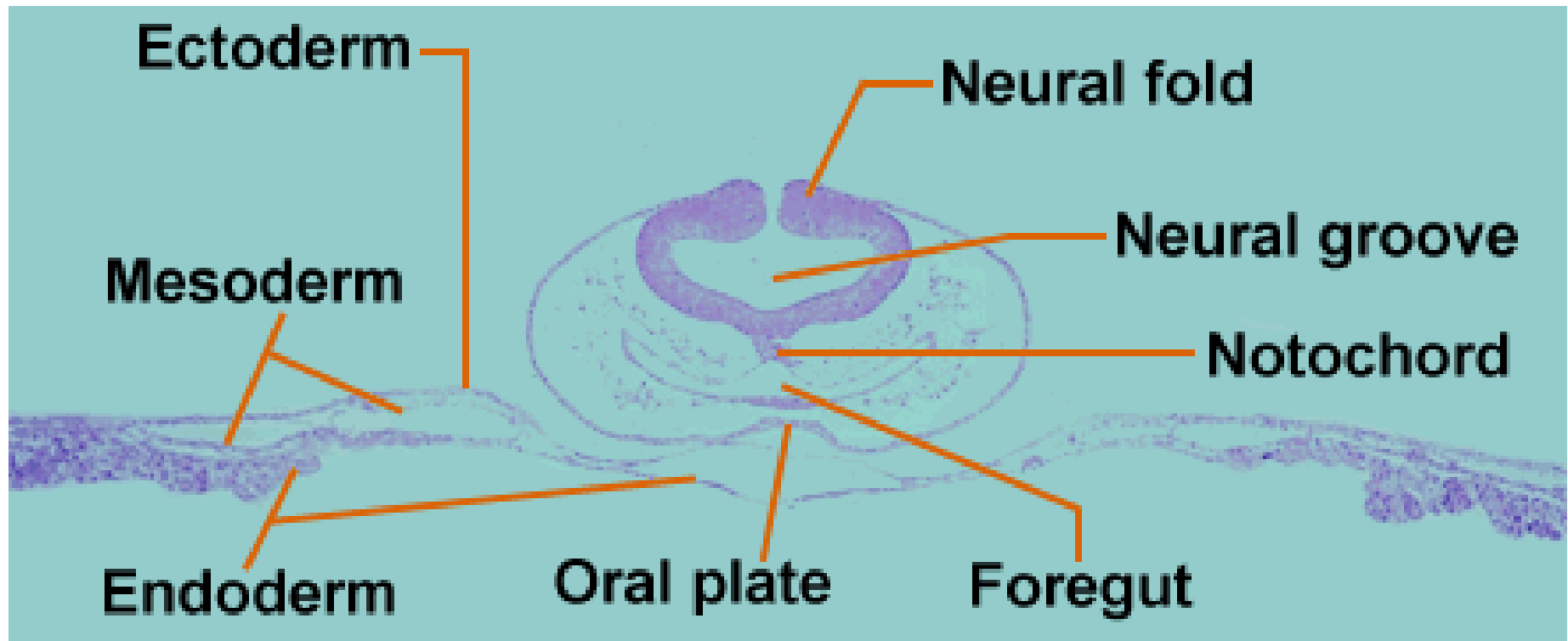


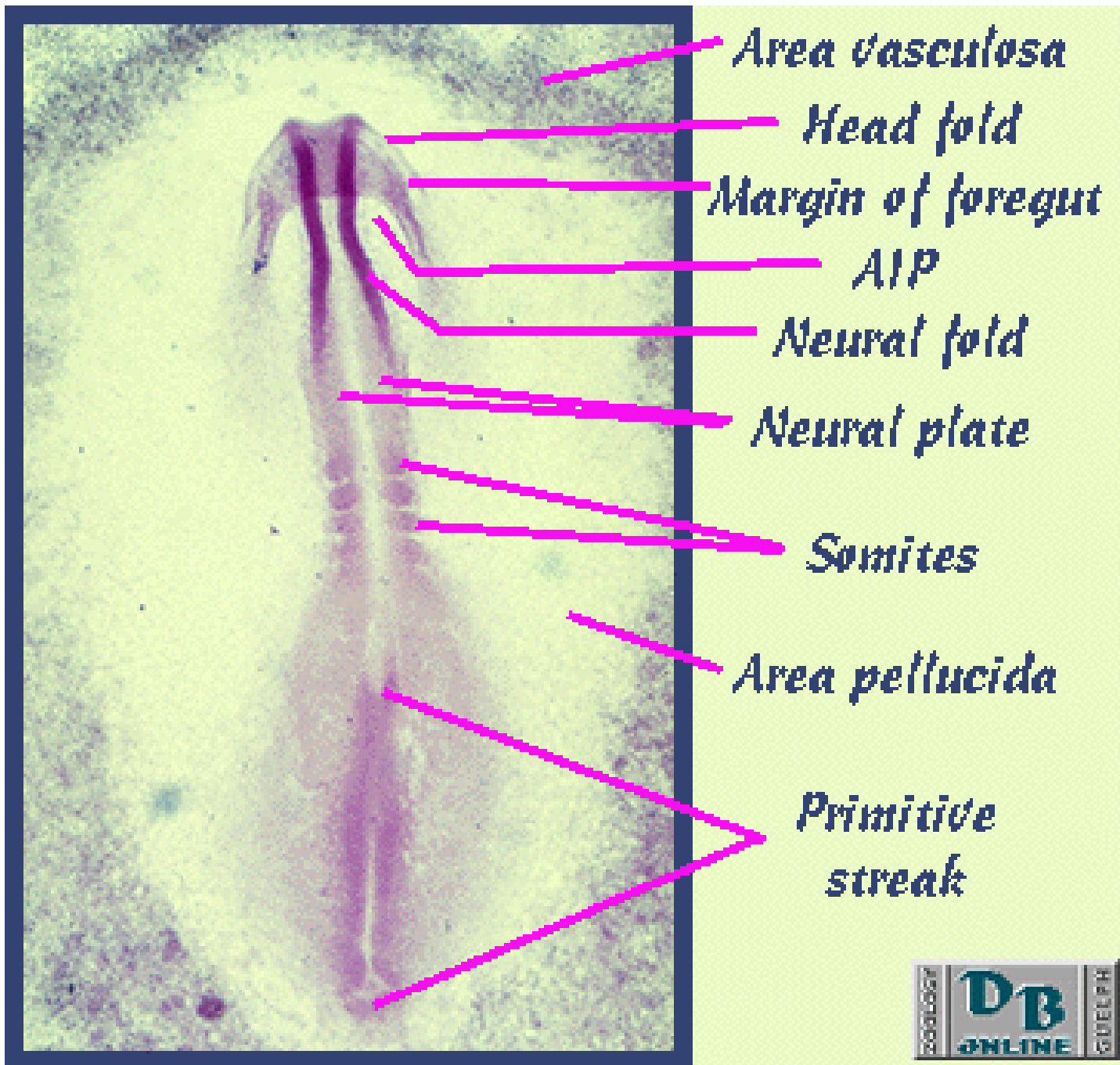


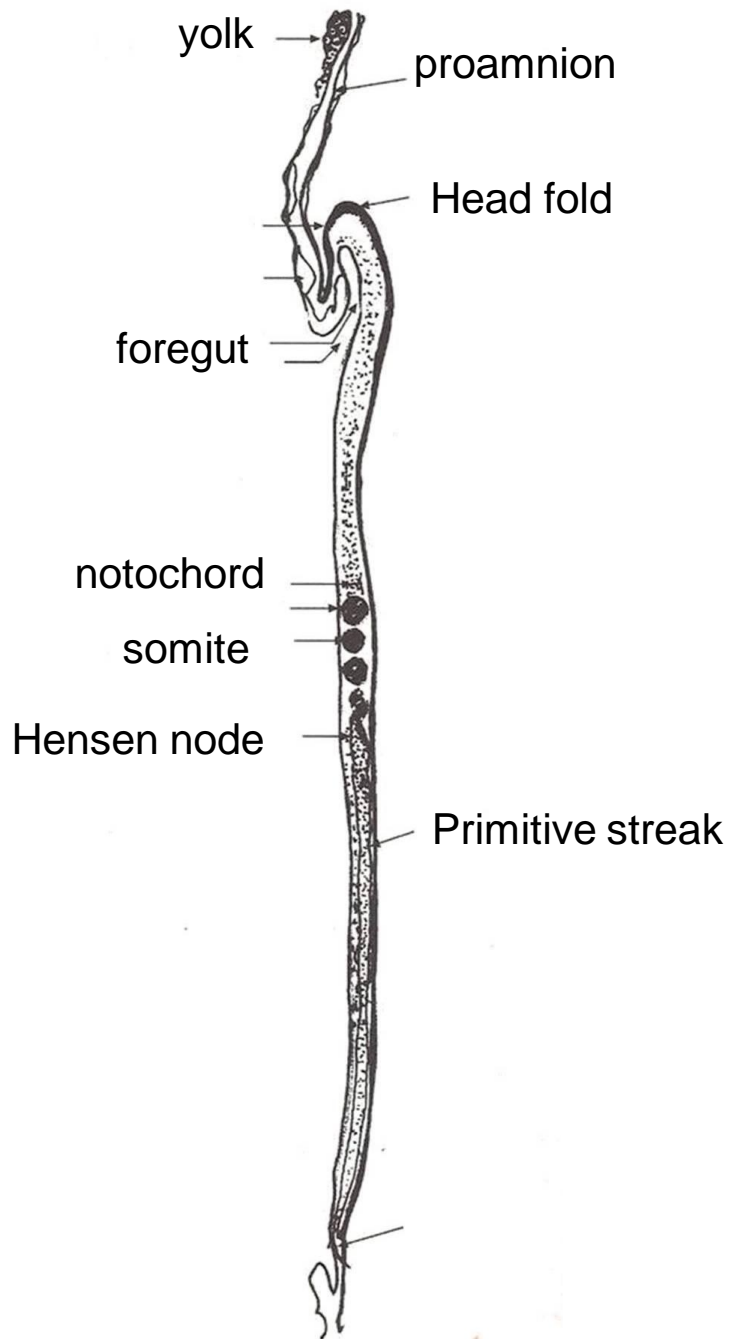


# Cross section of Chick embryo 24 hours though the head fold

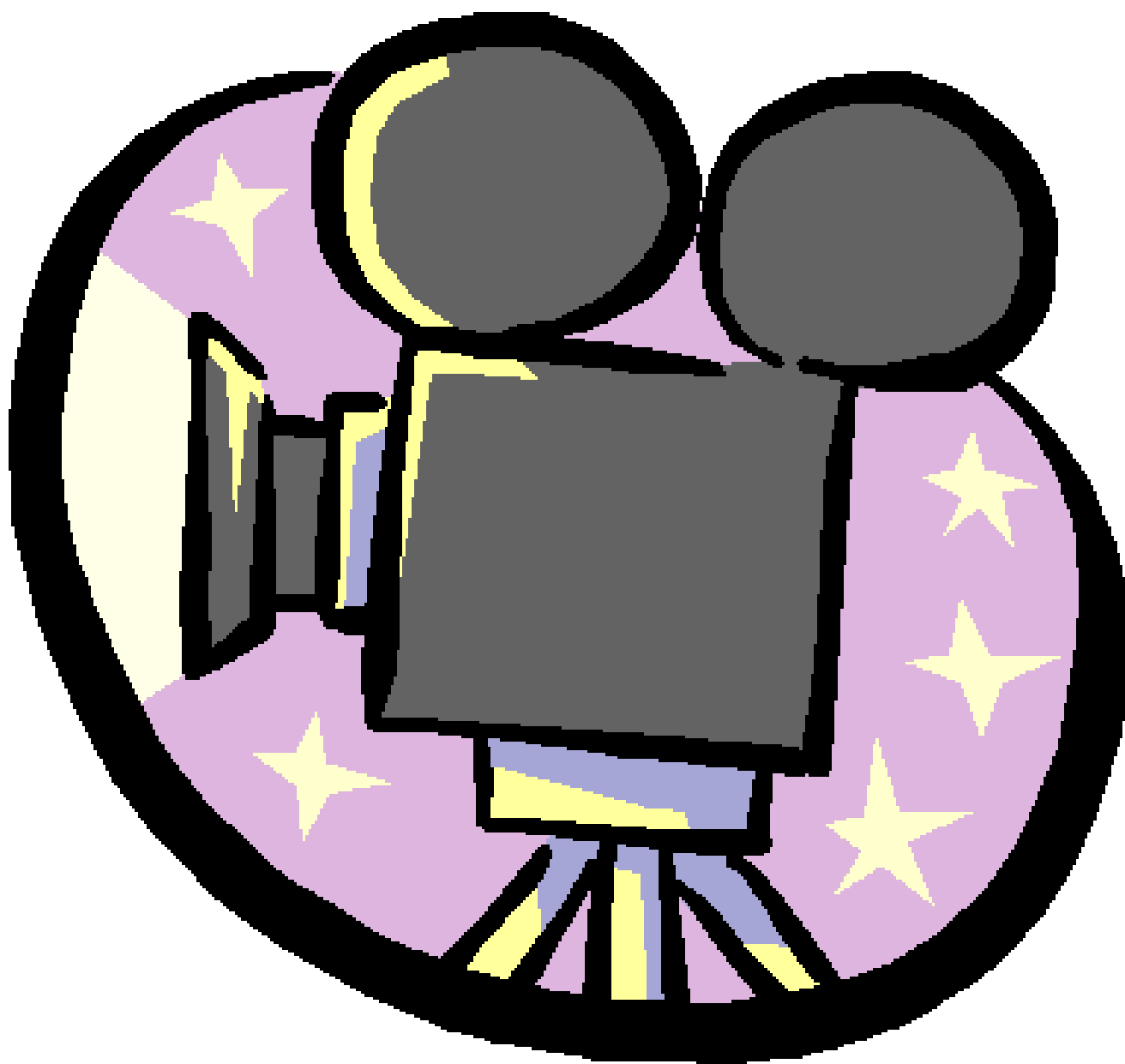








# Longitudinal section of Chick embryo 24 hours







- Whole mount of 16 hour chick embryo
- Cross section in 16 hour chick embryo through hensen node
- Cross section in 20 hour chick embryo through hensen node
- Cross section in 22 hour chick embryo shows hensen node
- Cross section in 22 hour chick embryo shows neural plate
- Cross section in 22 hour chick embryo shows neural tube
- Whole mount of 24 hour chick embryo
- Vertical section of 24 hour chick embryo
- Cross section in 24 hour chick embryo through hensen node
- Cross section in 24 hour chick embryo shows neural fold
- Cross section in 24 hour chick embryo shows neural tube
- Cross section in 24 hour chick embryo through head region