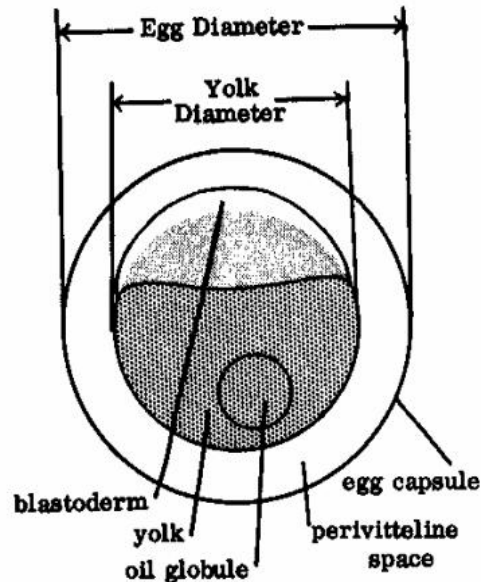
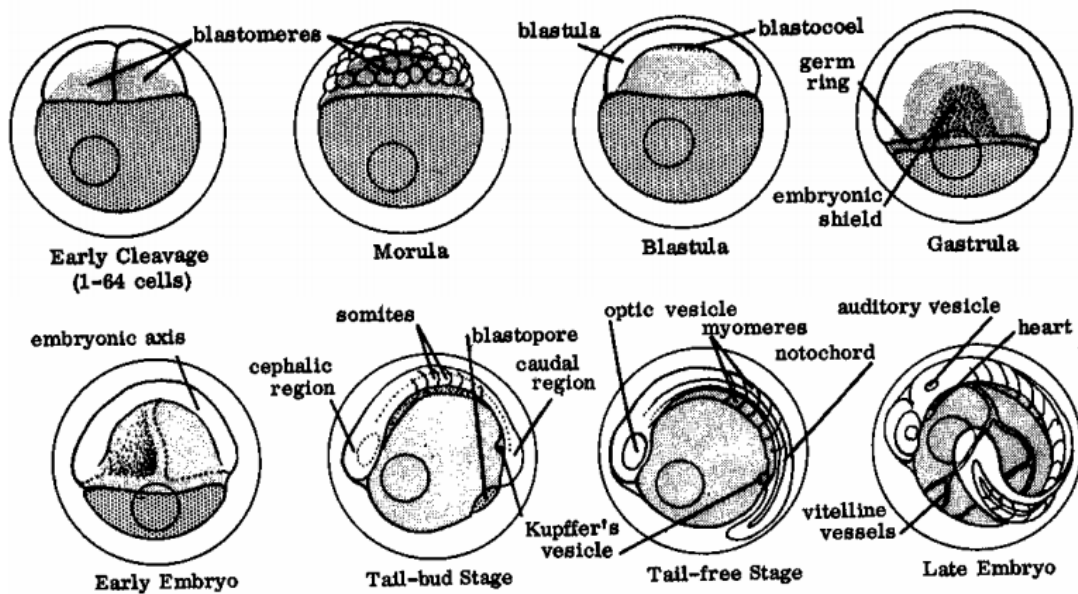


# Fish Embryonic Development

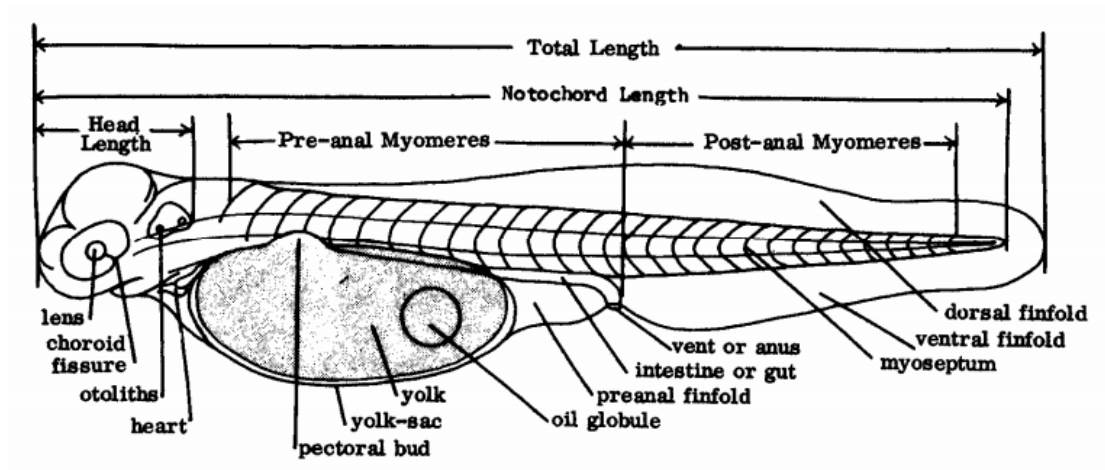
## General structure of fish egg



## Developmental stages of fish eggs



## General structure of yolk-sack (newly hatched) larva



What are you going to draw ?

- Whole mount in one day larvae of turbot fish
- Whole mount in one two larvae of turbot fish
- Whole mount in one three larvae of turbot fish
- Cross section in turbot larvae throw anterior region
- Cross section in turbot larvae throw trunk region