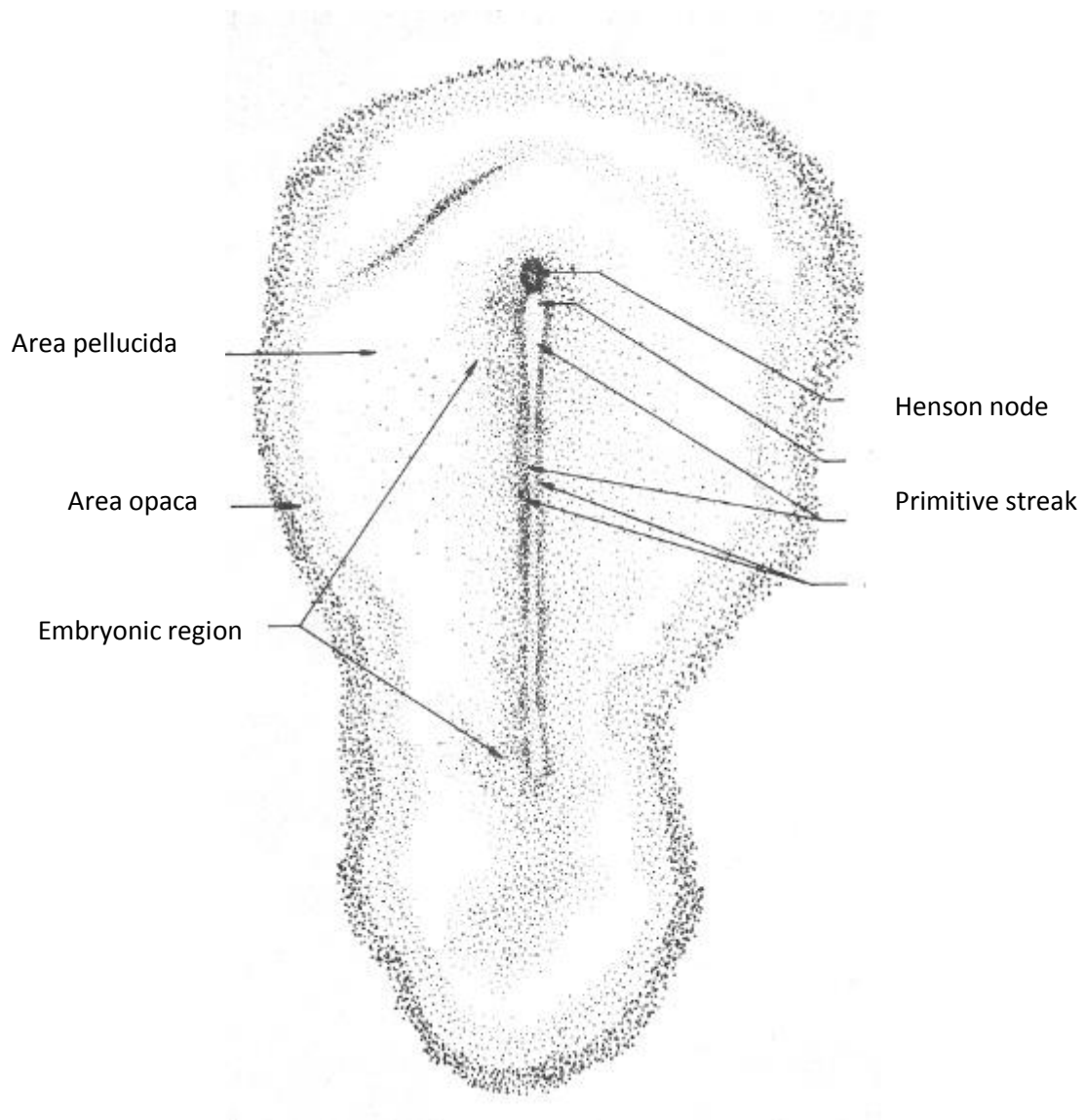
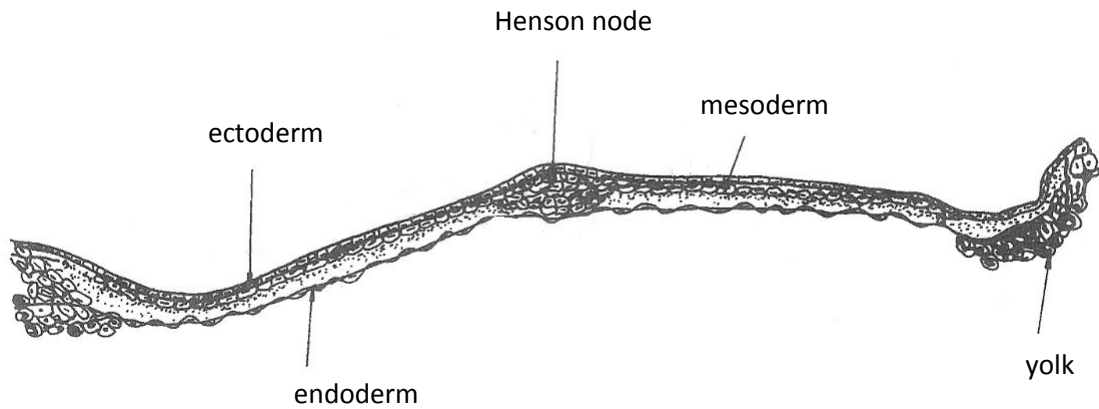


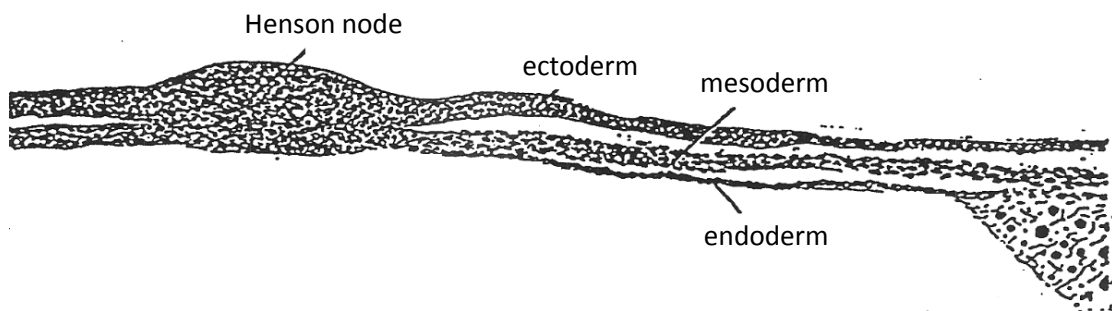
Early Development Stages of the Chick embryo



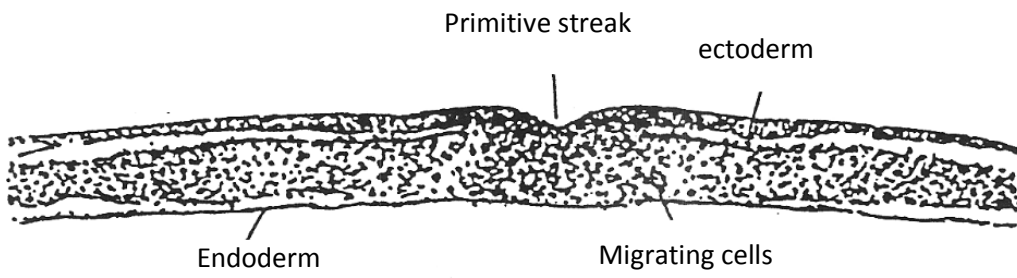
Whole mount of 16 hour chick embryo



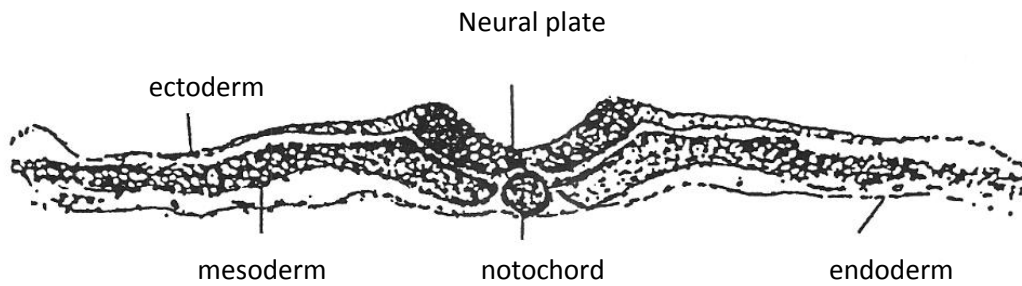
**Cross section in 16 hour chick embryo through
hensen node**



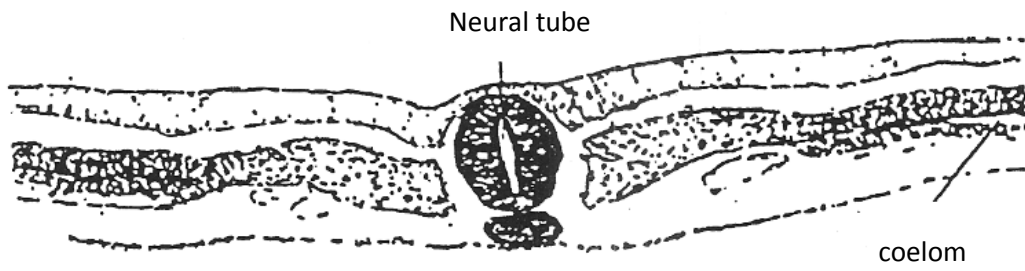
**Cross section in 20 hour chick embryo through
hensen node**



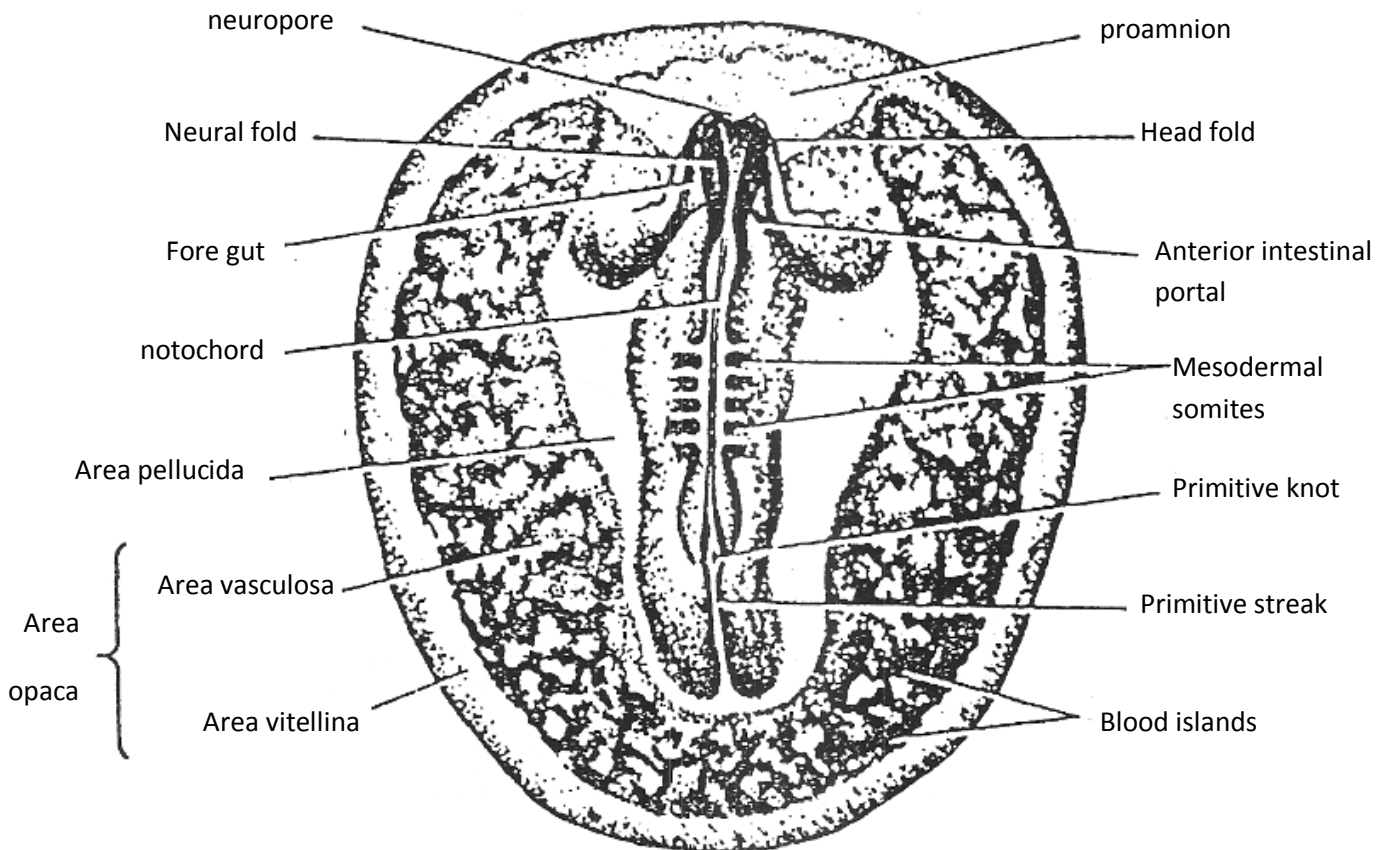
Cross section in 22 hour chick embryo shows hensen node



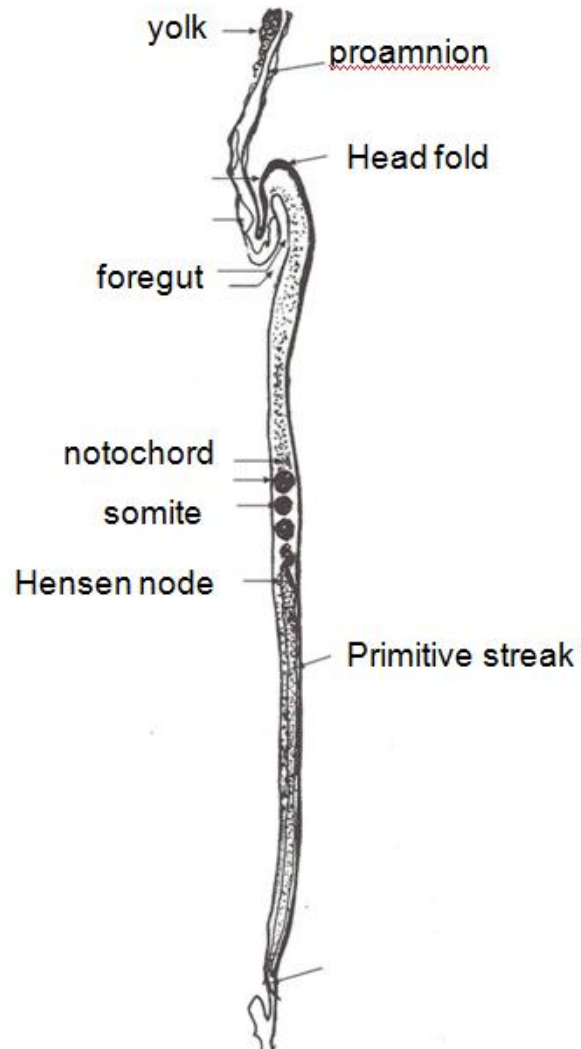
Cross section in 22 hour chick embryo shows neural plate



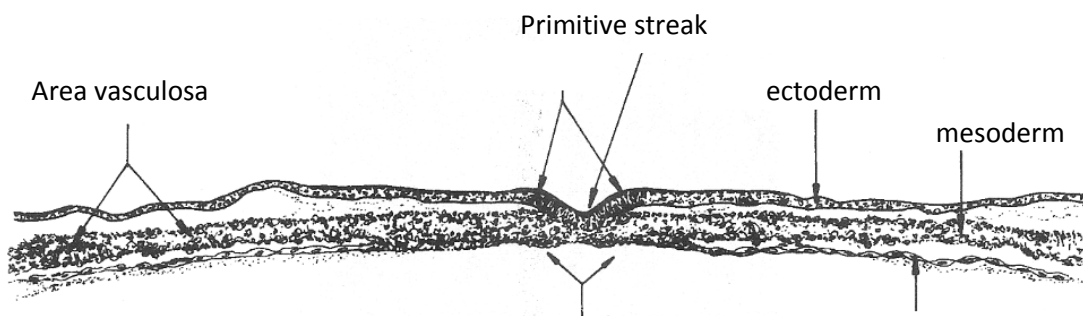
Cross section in 22 hour chick embryo shows neural tube



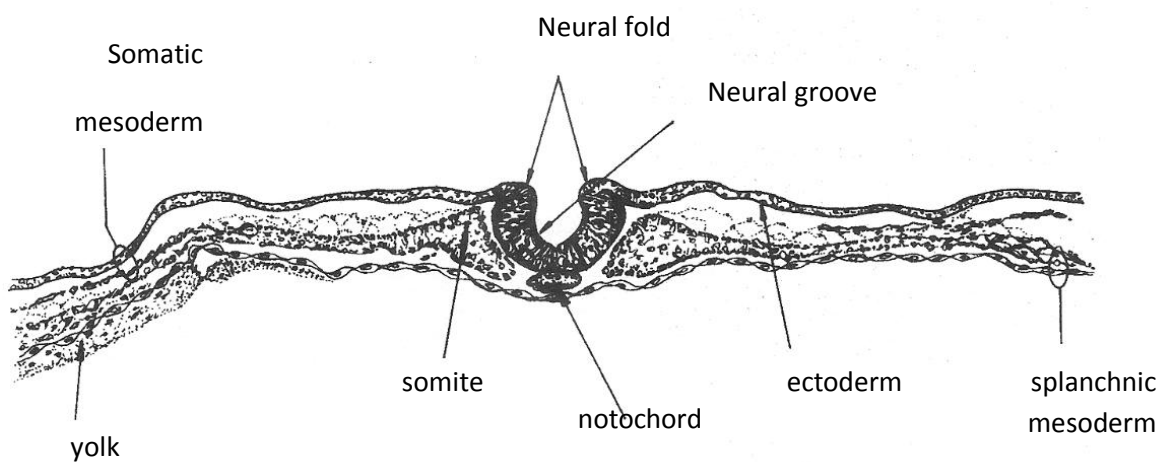
Whole mount of 24 hour chick embryo



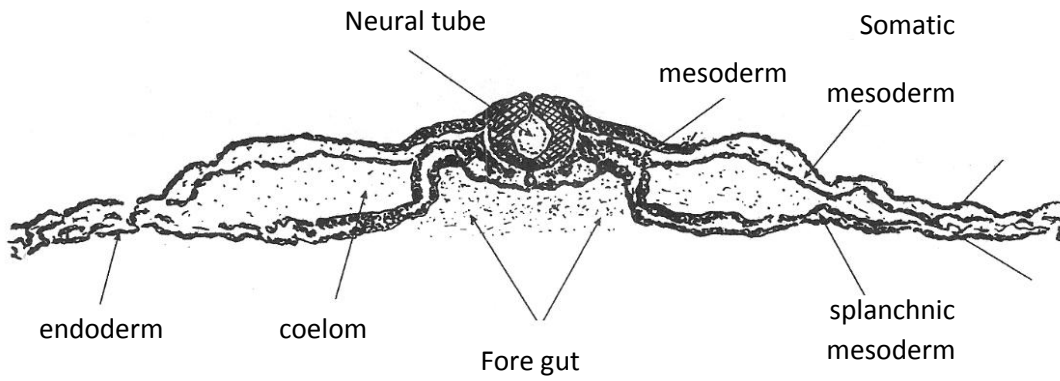
Vertical section of 24 hour chick embryo



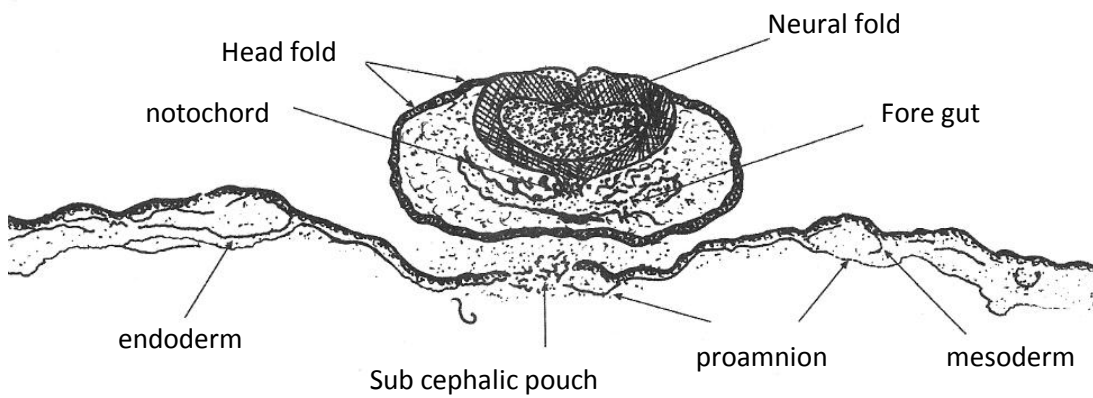
Cross section in 24 hour chick embryo through hensen node



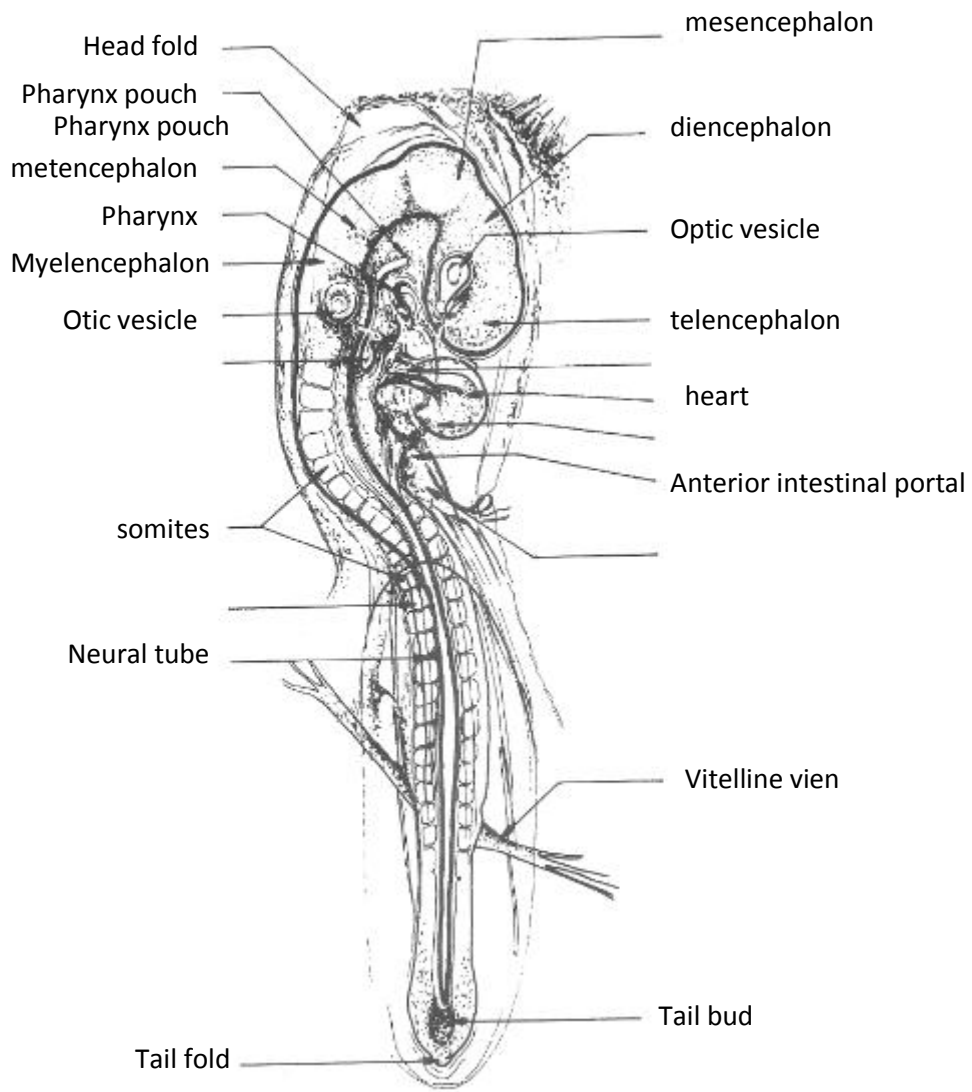
Cross section in 24 hour chick embryo shows neural fold



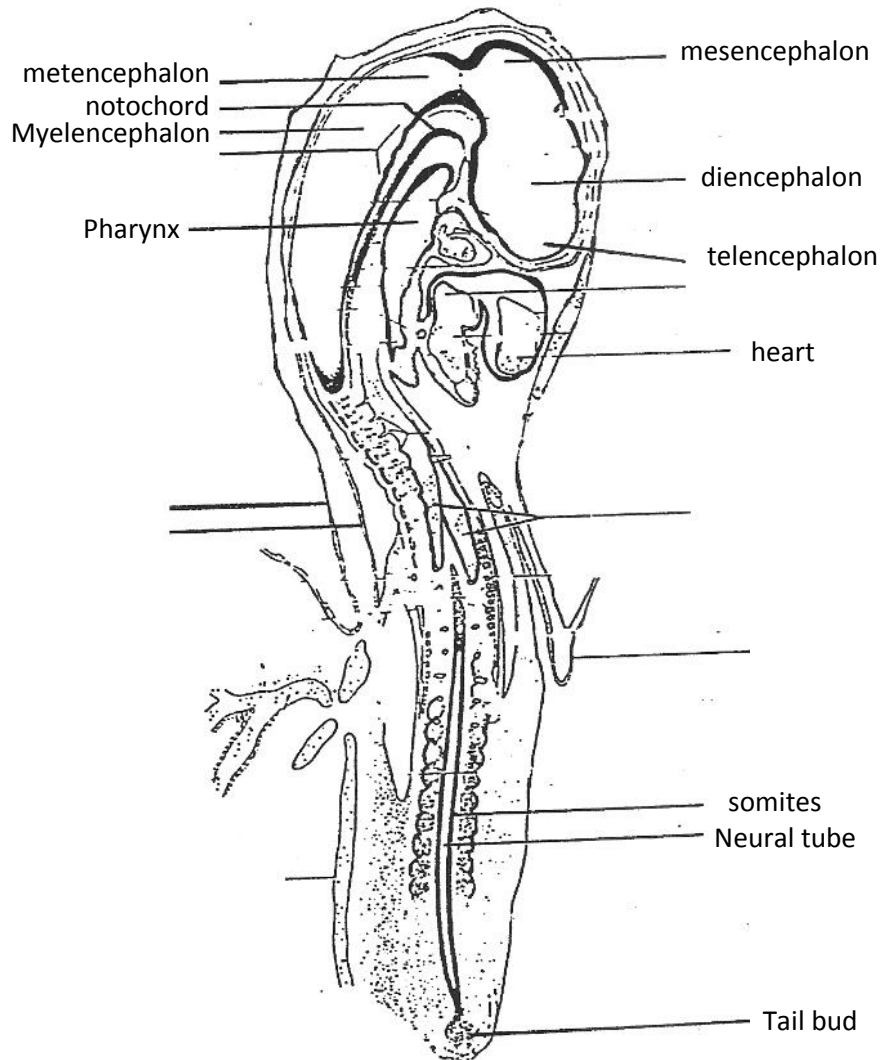
Cross section in 24 hour chick embryo shows neural tube



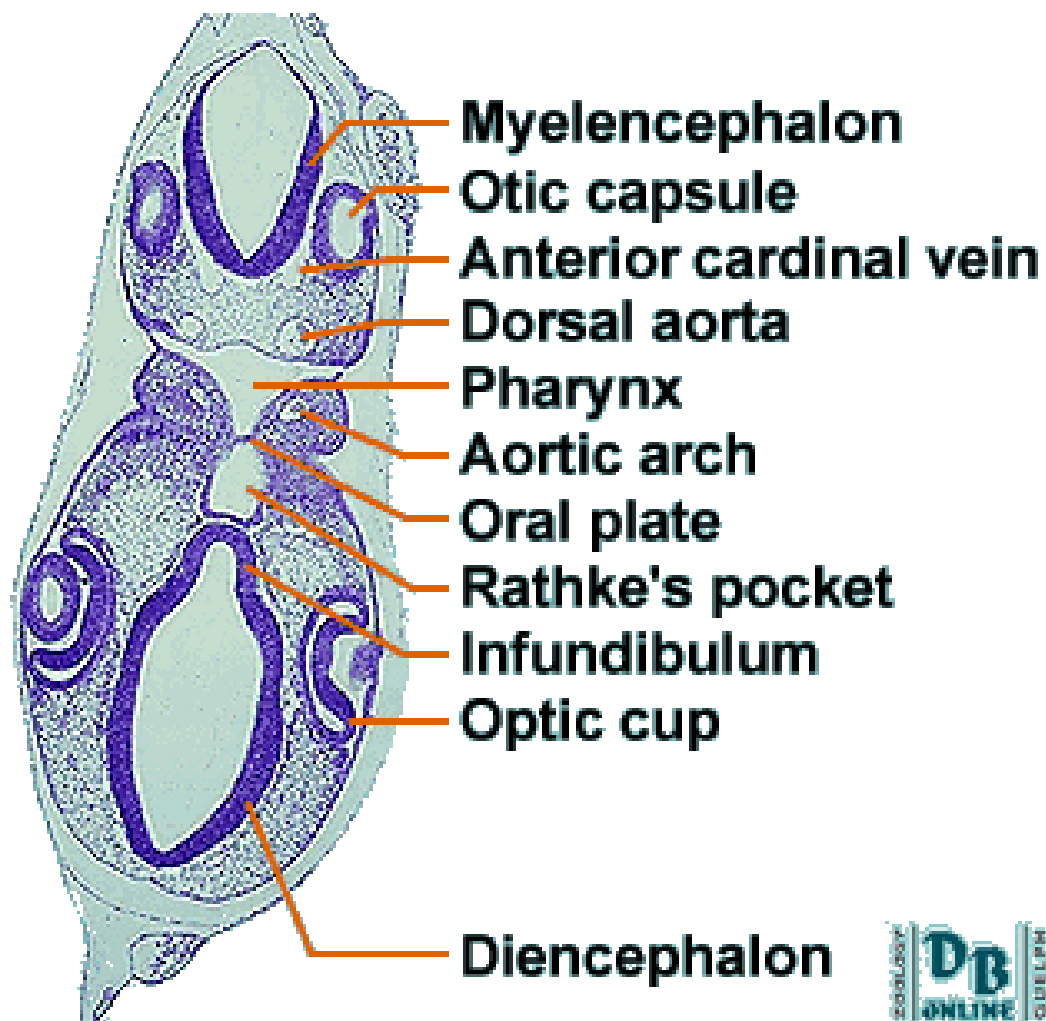
Cross section in 24 hour chick embryo through head region



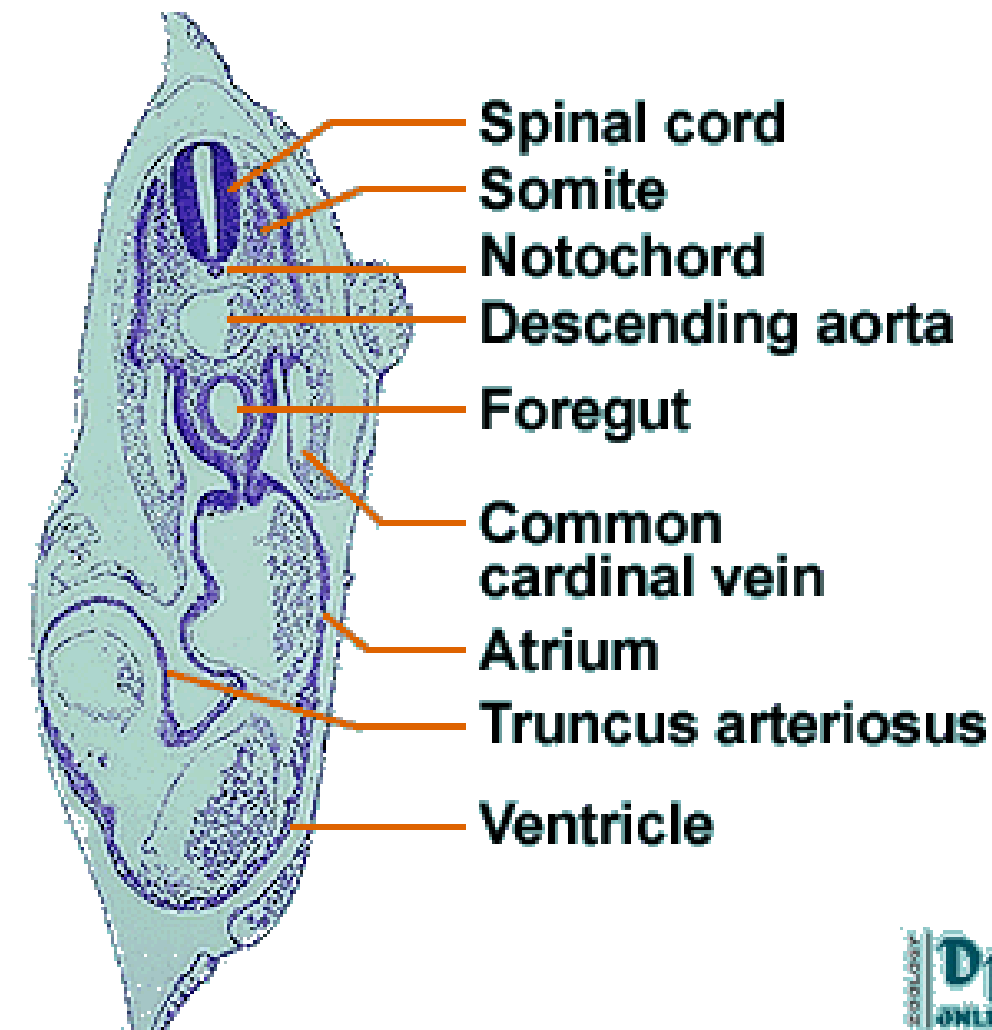
Whole mount of 48 hour chick embryo



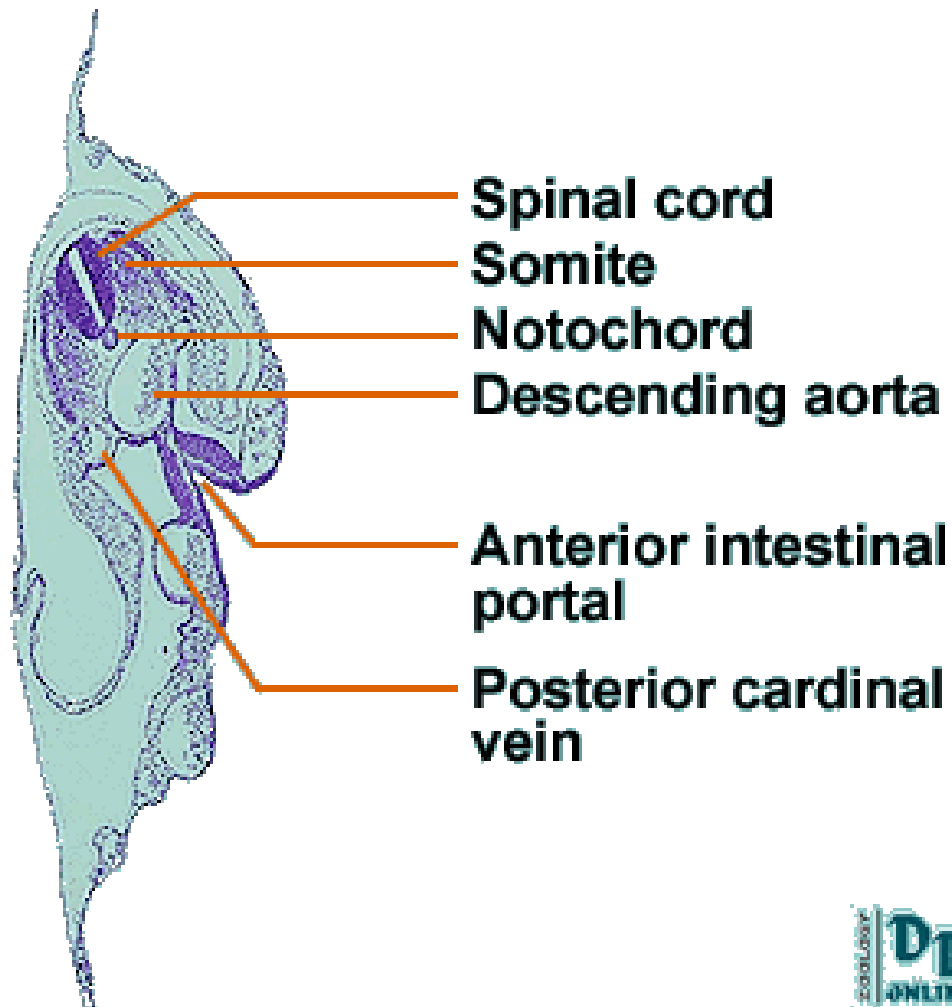
vertical section of 48 hour chick embryo



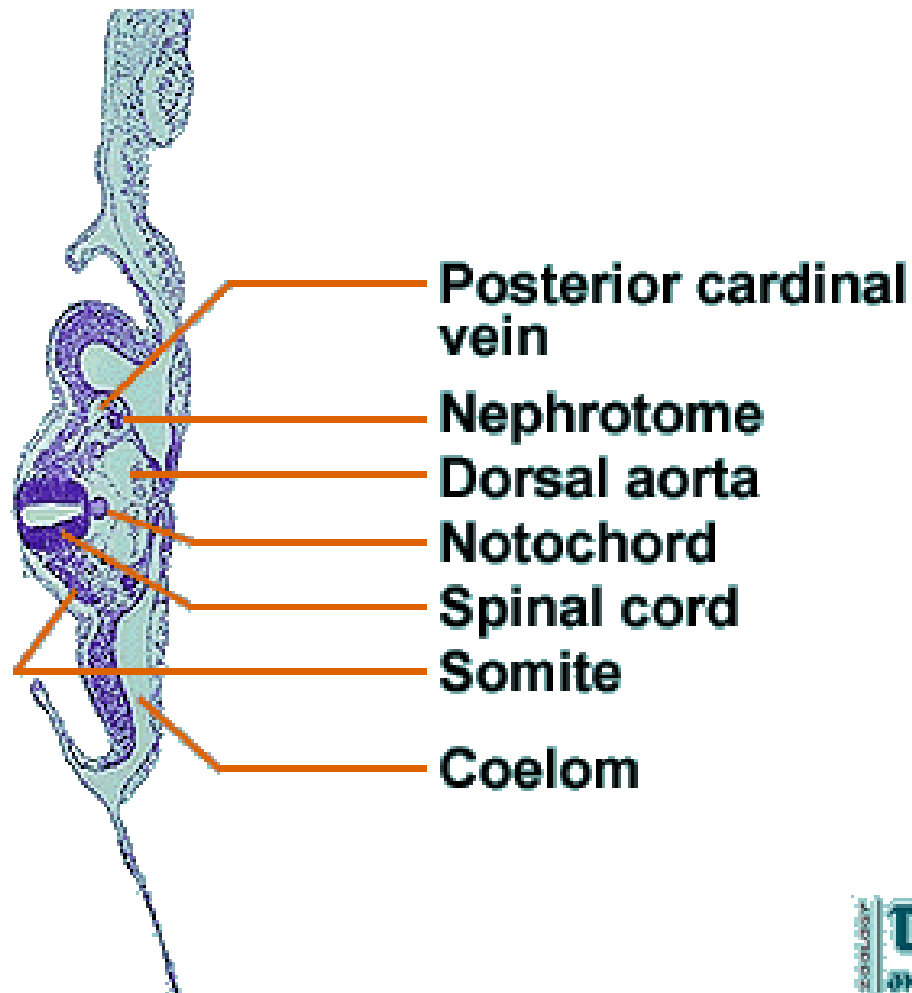
cross section of 48 hour chick embryo through eye and pharynx pouchs



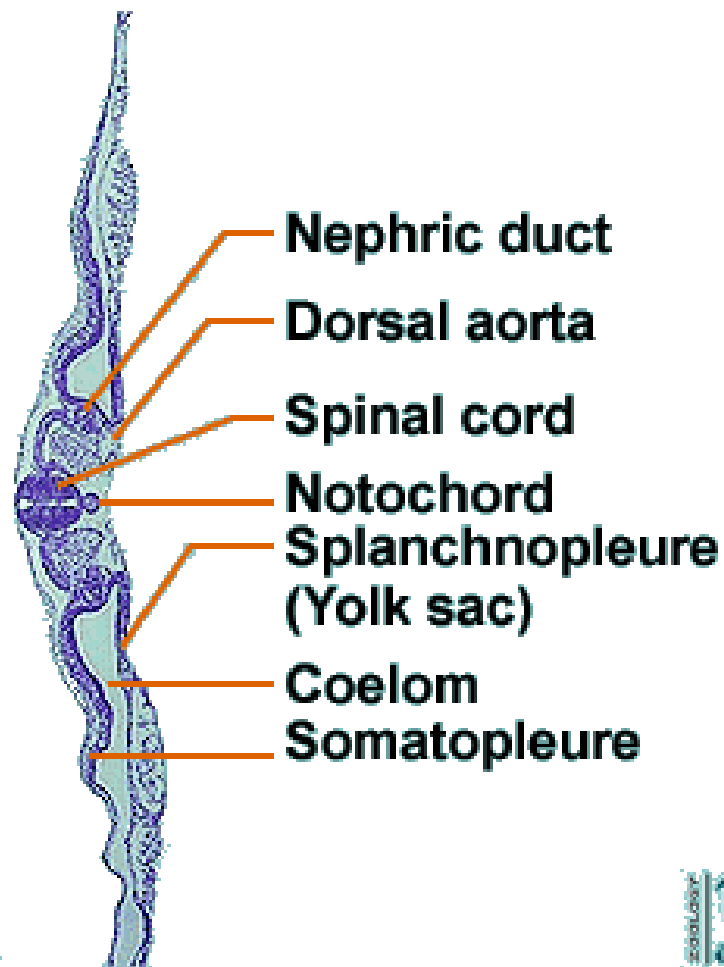
cross section of 48 hour chick embryo through heart



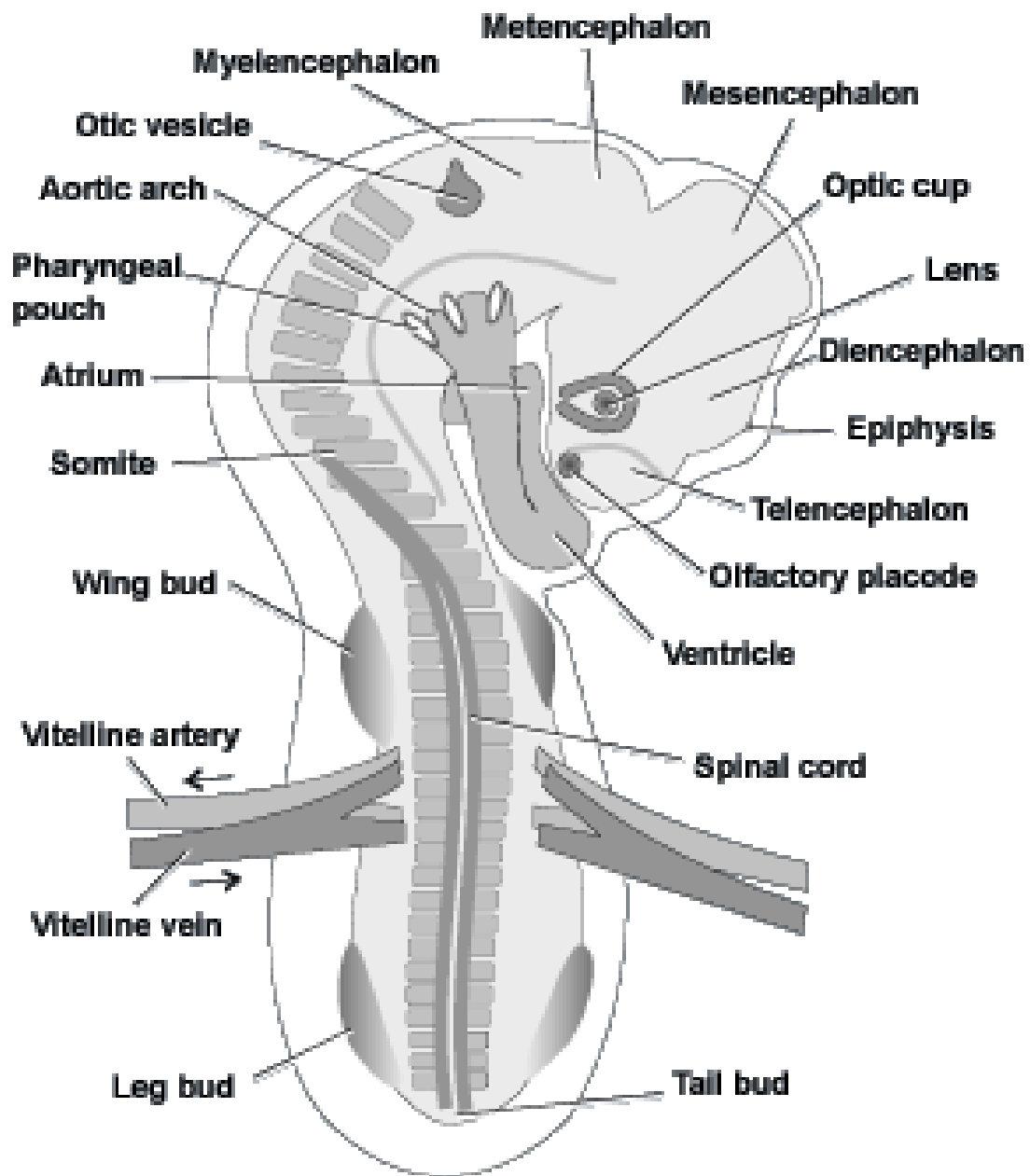
cross section of 48 hour chick embryo through the anterior intestinal portal



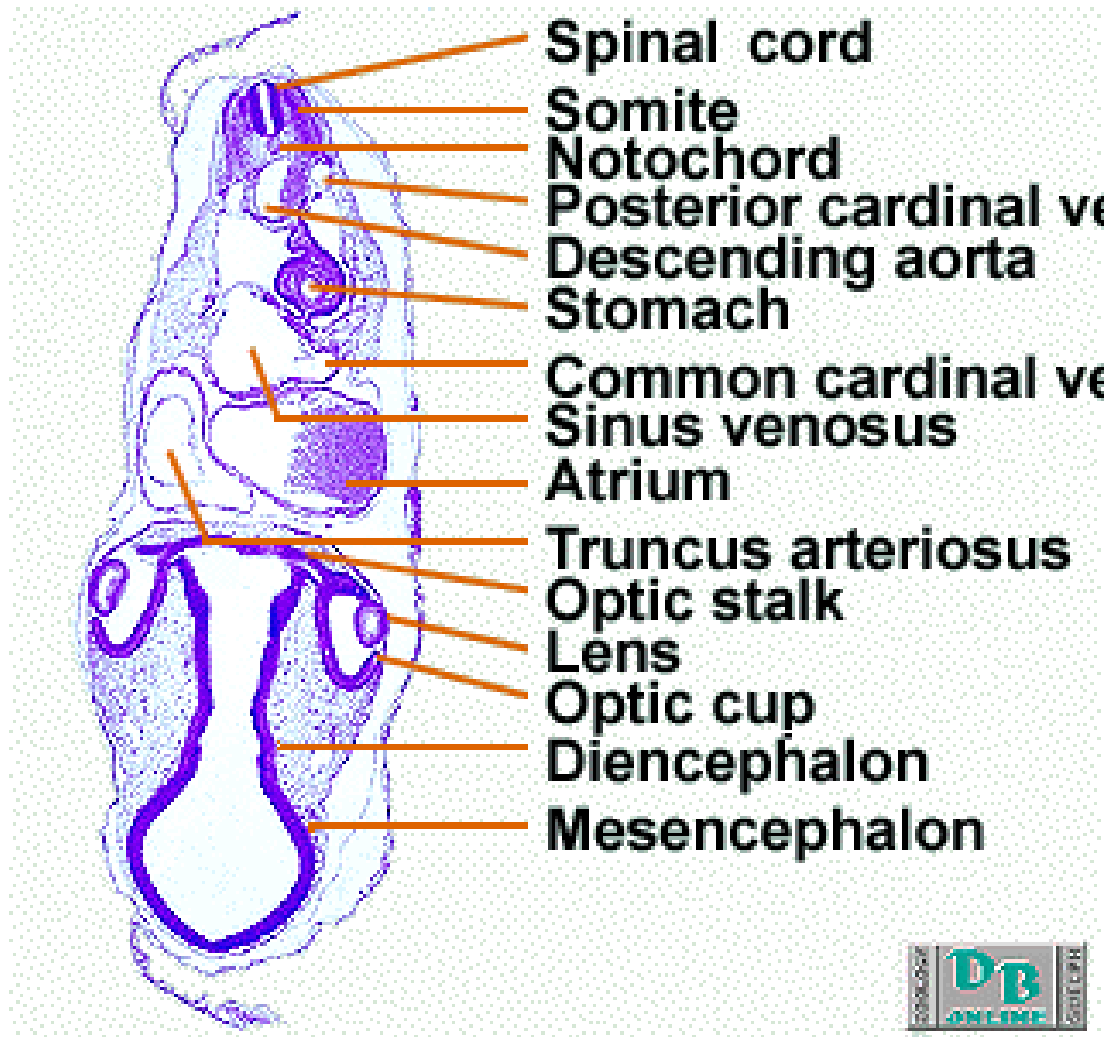
cross section of 48 hour chick embryo through trunk region and lateral body fold



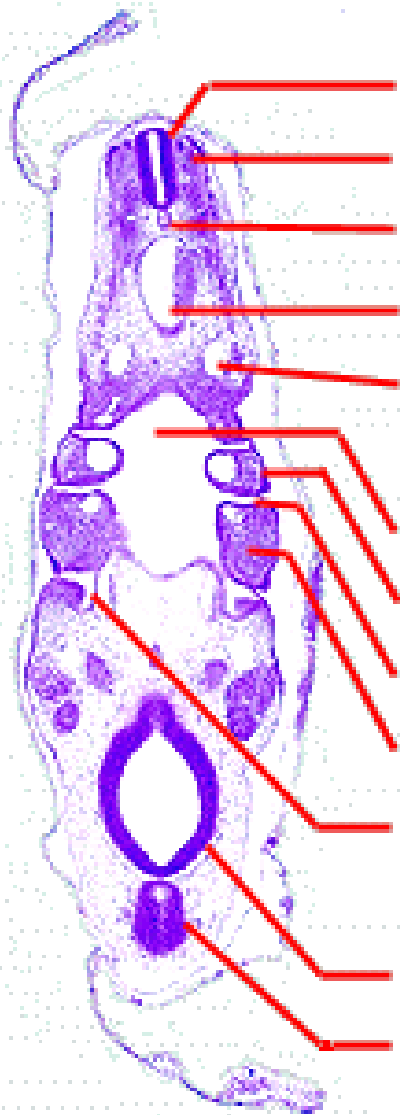
cross section of 48 hour chick embryo through trunk region



Whole mount of 72 hour chick embryo



cross section of 72 hour chick embryo through eye and heart



Spinal Cord

Somite

Notochord

Descending aorta

Anterior cardinal vein

Pharynx

Aortic arch

Pharyngeal pouch

Pharyngeal arch

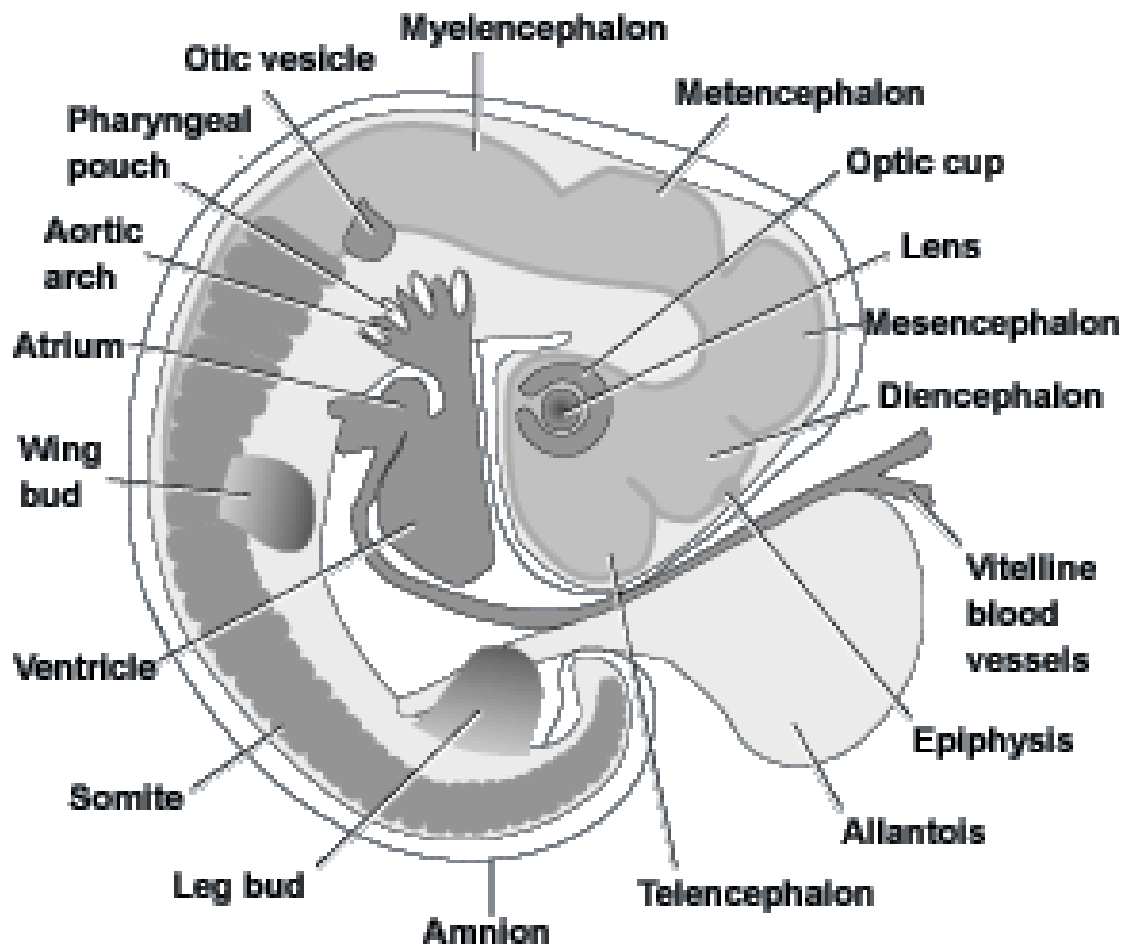
Internal carotid artery

Metencephalon

Mesencephalon



cross section of 72 hour chick embryo through pharyngeal puoch



Whole mount of 96 hour chick embryo