

Name:

Number:

SOLVE THESE QUESTIONS

Question 1

In Fig. 1, calculate the current passing in the 10- Ω resistor.

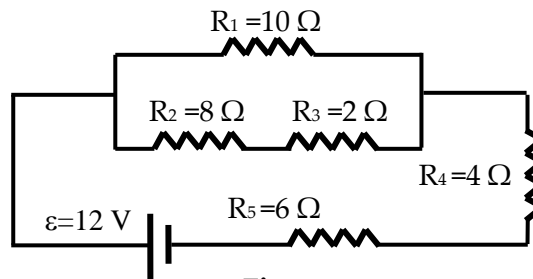


Fig. 1

Question 2

A capacitor of 8 μC , initially uncharged, is connected to a battery of 8 V and a 2 M Ω resistor. Calculate the maximum charge on the capacitor and also the maximum current. What is the capacitive time constant?